



LOMA LINDA UNIVERSITY

Loma Linda University  
TheScholarsRepository@LLU: Digital  
Archive of Research, Scholarship &  
Creative Works

---

Scope

Loma Linda University Publications

---

2-14-1964

## Scope - Volume 01, Number 23

Loma Linda University

Follow this and additional works at: <https://scholarsrepository.llu.edu/scope>

---

### Recommended Citation

Loma Linda University, "Scope - Volume 01, Number 23" (1964). *Scope*.  
<https://scholarsrepository.llu.edu/scope/43>

This Newsletter is brought to you for free and open access by the Loma Linda University Publications at TheScholarsRepository@LLU: Digital Archive of Research, Scholarship & Creative Works. It has been accepted for inclusion in Scope by an authorized administrator of TheScholarsRepository@LLU: Digital Archive of Research, Scholarship & Creative Works. For more information, please contact [scholarsrepository@llu.edu](mailto:scholarsrepository@llu.edu).



READ INSIDE:

- ▶ Picture story of Risley Hall million-dollar fire
- ▶ Heart patient returns to Pakistan after surgery
- ▶ Trustee appointees Gillis, Spangler accept

# University SCOPE

Vol. 1, No. 23 Friday, February 14, 1964

THE LOMA LINDA UNIVERSITY WEEKLY NEWSPAPER

## Million-Dollar Fire Guts Risley Hall Forces Classes into Other Buildings



### Student, Faculty Courage Undaunted

State Foresters will investigate the cause of a million-dollar fire at Loma Linda University that Wednesday destroyed the three-story Risley Hall, a classroom and laboratory building of World War II vintage. No person was reported injured in the blaze.

Fire Chief Kenneth Rairden of Loma Linda Volunteer Fire Department said it is believed that a defective ceiling light fixture caused the fire, adding that the State Foresters would be called upon to determine the cause.

The fire chief declined to estimate the damage but indicated that the building is a total loss.

### Animals Saved

University President Godfrey T. Anderson reports that the structure contained thousands of animals used in research for the University School of Medicine. They were all saved from the fire. He valued the structure itself at about \$900,000 and the elaborate research equipment also destroyed by flames at more than \$150,000.

The fire was first reported in the basement of the building at about 11:30 a.m. by two School of Medicine professors, Grant White, PhD, and Ian M. Fraser, PhD. The fire chief stated that the fire seemed to begin in the basement, where Drs. White and Fraser sought to extinguish the fire with available equipment. For a while it seemed as though the fire was limited to the basement spot.

When flames broke through the roof, fire departments at San Bernardino, Colton, Redlands and Ontario were called to the scene. The blaze soon spread to the other floors of the structure in spite of efforts of local volunteer firemen and crews from 23 separate fire-fighting units.

About 100 teachers and students were occupying the build-

Continued on page 3

SMOKE BILLOWS from Risley Hall as firemen manning fire-fighting units struggle against flames that left the building an almost vacant hull.



HOWARD WEEKS

## Howard B. Weeks to Head LLU Public Relations, Development Dept.

Loma Linda University Trustees have named Howard B. Weeks to fill the post of vice president for public relations and development.

The new head of the public relations and development office succeeds, at the age of 40, Jerry L. Pettis, who resigned the University vice presidency January 9 to seek election to the United States Congress. Mr. Weeks was director of public relations for the General Conference of Seventh-day Adventists in Washington, DC, from 1956 to 1961.

At the present Mr. Weeks is writing a thesis for the Doctor of Philosophy degree in speech from

Michigan State University. He graduated from La Sierra College, Riverside, and also attended Pacific Union College, Angwin, California.

In announcing the appointment of Mr. Weeks, Dr. Godfrey T. Anderson, University president, said the vice president assumed his new responsibilities Monday.

A native of Arizona, Mr. Weeks is married to Dorothy Mae, nee White, a registered nurse. Mrs. Weeks presently is a student at the University Graduate School, where she is enrolled in a nursing program which leads to the Master of Science degree. Mr. and Mrs.

Weeks have four children.

Among Mr. Weeks' professional credits are the authorship of numerous articles on public relations and communications, and of **Breakthrough**, a book on church public relations published in 1962.

Mr. Weeks is a member of the Public Relations Society of America, the American College Public Relations Association and the American Alumni Council, and is affiliated with Sigma Delta Chi, a professional journalism fraternity.

Continued on page 2

# A School and its Alumni

By HUGH C. LOVE, DDS

School of Dentistry Alumni President Elect

(EDITOR'S NOTE: Dr. Love's article appeared in the Loma Linda University Dentist Magazine, Winter 1964, which deals with the fourth annual alumni-student convention scheduled for February 19-23 at the Loma Linda campus. The outgoing alumni-president, Clifford E. Vixie, DDS, SD'57, writes about the convention in a short, practical note. His comments about alumni affairs and policies will appear in next issue of SCOPE.)

Today man lives in a material world that would hardly be recognizable to man of two hundred, or even sixty years ago. But man's heart and spirit are much the same as ever. Modern man is no better equipped internally than ancient man to live with these feverish ways, the running to and fro, unless something beyond self is incorporated into his training. Furthermore, greater than ever are the responsibilities of the Christian and the demands made upon him.

To match these times there is a greater than ever mutual responsibility between Loma Linda University and the students enrolled in its various schools. It is a greater honor to be enrolled and a greater responsibility not to betray the ideals of physicians who recognize their dependence upon the Great Physician, of surgeons and dentists who submit their skilled hands to the nail-pierced Hands, of nurses who pray with their patients, of teachers who proclaim the eternal spiritual verities as well as the sciences and therapeutics.

As a student I was mindful each day of the privilege of attending the University; of my obligation to members of the Seventh-day Adventist Church the world around who have sacrificed to maintain this professional training center; and of my obligation to honor and respect the men and women who day by day have made this University a Christian center for education and challenge in the classroom, the laboratory, and place of worship.

Let me share with you some recollections that deepen my gratitude and lengthen my appreciation. There is balm for the "feverish ways" in the short devotional talk and prayer before the subject of the day is mentioned in the classroom, the constant and faithful summarizing of how truly and wonderfully we are made by a Father who created and cares for all His children; the personal dedication of the teachers who hold the opportunity to contribute to Christian education worth any sacrifice of emoluments coveted by professional men of the world; the devotion of friends and loved ones who have shared the "heat and burdens of the day" in time and money with us, in order to present another professional man to the world and to God for service.

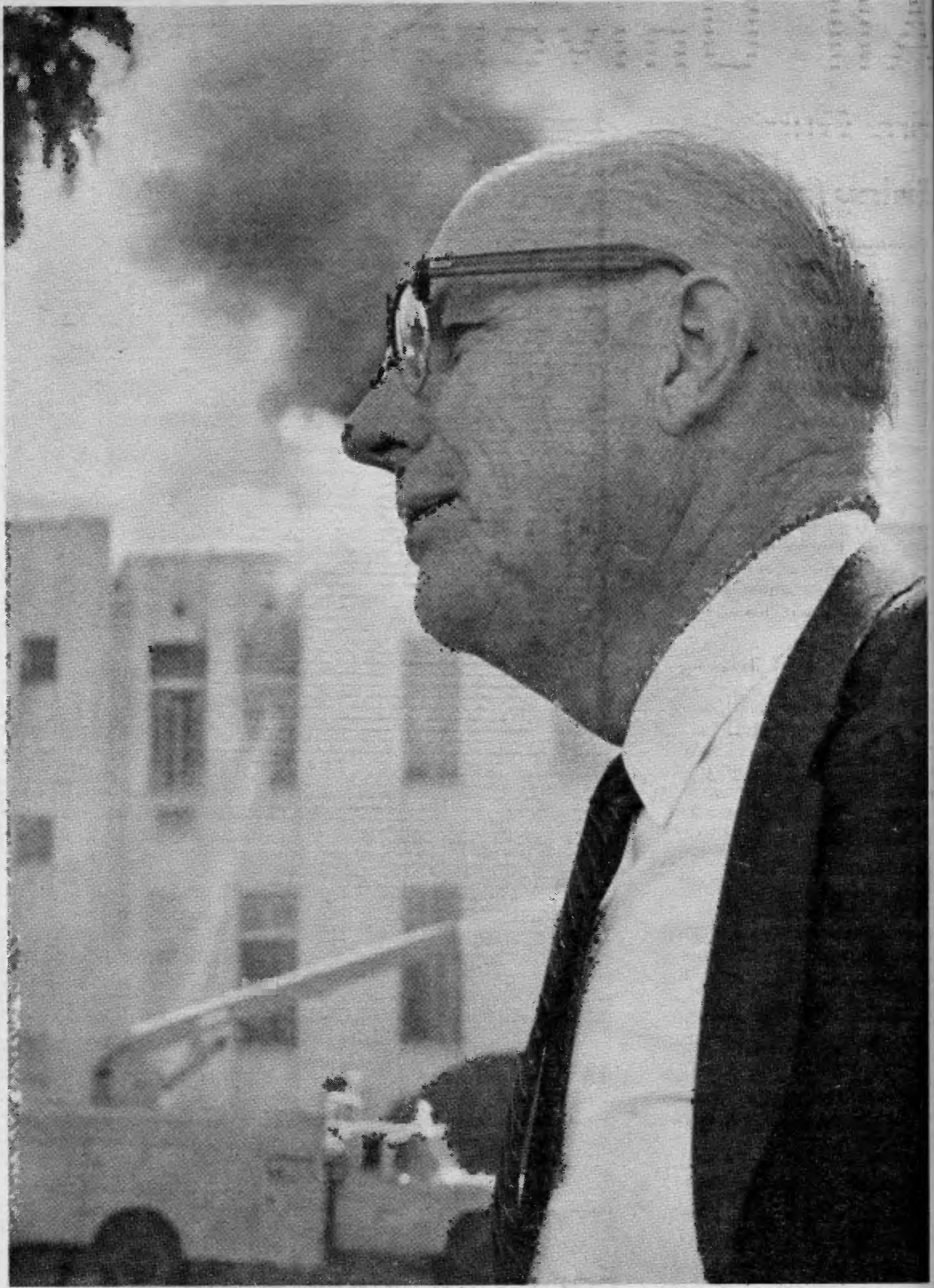
One day I happened to be in the dental supply room at the School of Dentistry when a representative of a dental supply company was talking. Someone had just asked him a question concerning another school. Promptly he had volunteered the information that we as students should be very grateful for the privilege of attending Loma Linda University. He said there was no comparison to be made with other schools. Just what he had in mind I may never know for sure. But since, I have enjoyed conjecturing what he had in mind. Could he have had intimations of such memorabilia in the life of this alumnus as . . .

The teacher on the clinic floor who helped me to complete a difficult "first" — a fixed partial prep — and whose response to my heartfelt gratitude was, "It's been a pleasure."

The gruff-sounding professor who roused in me a hasty reaction which changed to something like tenderness when I later heard him humbly plead in the pulpit at church, "Lord, give us gentle hearts to know Thee better."

The many petitions reiterated through four years of bearing with us, "Dear God, help us to be better examples to the students and to those about us."

All of these things bring this "old grad" to the continuous sense of obligation we alumni should cherish in our own minds and hearts and which we should foster, in the lives of our successors, in the classrooms, clinics, laboratories, personal interviews, and times of worship. Let us tell of our appreciation for our former instructors, our classmates, and those who have taken our places. Not only by words, spoken or written, but by lives that continue the tradition of dedication to God and man, of eternal consequences. By lives that go beyond to new, deeper devotion, to higher realizations of the wonders of redeeming love and our own unworthiness without daily sanctified living by God's grace alone. Then and then only shall we be worthy of the cost of our Christian education — the cost to our school, our church, our teachers, our loved ones.



President Godfrey T. Anderson contemplates extent of fire damages and its possible effects on the University.

## Heart Patient Returns to Pakistan After Surgery by University Team

Ammanullah Khan, 35, prominent Pakistani citizen who underwent open heart surgery in Los Angeles six weeks ago, returned this week to his homeland.

He met reporters on the day of his departure at White Memorial Medical Center, where a heart surgery team from the University School of Medicine had operated successfully to correct his heart defect.

Before the operation, said Mr. Khan, he was unable to walk, but now can walk three or four miles without difficulty.

The operating team was the same that last summer performed life-saving heart operations on over 40 Pakistani adults and children during a friendship mission sponsored by Lyndon B. Johnson, then United States Vice President.

During the brief ceremony Mr. Khan, the father of five, received a pin making him a member of Mended Hearts Incorporated, an international club of persons who have undergone heart surgery.

Heart Team Cardiologist C. Joan Coggin, who is also assistant professor of medicine at the University, pinned the gold emblem to his lapel just as she had done for his countrymen who had similar surgery.

Both President Johnson and Pakistan's President Ayub Khan were made honorary members of the mended hearts fraternity in earlier ceremonies at which they lauded the University team's contribution to international understanding.

After traveling 1800 miles, Mr. Khan, a road commissioner in the northern Pakistan state of Swat, declined last summer the opportunity to have the

needed operation out of deference to the many who crowded the heart team's schedule and would never have another opportunity for surgery.

He came to Los Angeles with his wife in December, and has since been the house guest of Ellsworth E. Wareham, MD, team cardiac surgeon and associate professor of surgery at the University.

Present for the ceremony were officials from White Memorial Medical Center, which provided hospital care for Mr. Khan without charge; the six members of the heart team, who likewise performed without payment; and Raymond B. Crawford, MD, a member of the board of directors of the Los Angeles County Heart Association.

The press conference was under the direction of John Parrish, University public information officer, in cooperation with Wallace J. Lighthall, director of public relations at the medical center.

### Howard Weeks New Vice President Here

Continued from page 1

As vice president for public relations and development Mr. Weeks will be primarily responsible for directing publications, information, alumni, and community relations, and fund raising programs of Loma Linda University. At the administrative level he will have a voice in future planning for the University, stated President Anderson.

**University SCOPE**  
THE LOMA LINDA UNIVERSITY WEEKLY  
NEWSPAPER

Published every Friday at Loma Linda University by the University, an educational institution operated by the General Conference of Seventh-day Adventists, as a non-profit organ.

Second class postage paid at Loma Linda, California. Printed at the Riverside County Publishing Company, Inc., Arlington, California.

Regular subscription rate: \$3.00 per year; 10 cents per copy.

EDITOR: TOR LIDAR  
Editorial Assistant: Carol J. Mills

Contributing Editors:  
Alice E. Gregg, Lucille D. Hopp, Oliver L. Jacques, John Parrish, Jerry Wiley

Loma Linda University Administration:  
Godfrey T. Anderson, president  
Keld J. Reynolds, vice president for academic affairs  
Walter E. Macpherson, vice president for medical affairs  
Robert L. Cone, vice president for financial affairs  
Howard B. Weeks, vice president for public relations and development

Editorial Offices: The University Library building, Loma Linda, California. Call 796-0161, ext. 283, area code 714.

# All University Hosts Fire Victims

## Fire Guts Risley Hall

Continued from page 1

ing when the fire was discovered in a basement room used for research. All of them left the building without any incident, according to Dr. Anderson. He added that many re-entered the building to help in saving valuable equipment and research records.

One thousand mice, at least 1000 rats, 100 dogs, many birds, three ostriches and other research animals were rescued from the building during the first few minutes when it appeared that the smoldering fire would not reach such major proportions.

### Like Crowded Market

As the efforts to salvage equipment, books and invaluable research material progressed, the quadrangle north of Risley Hall took on the appearance of an overcrowded market. A strong wind carried smoke and ashes into the surrounding buildings and a heavy mist from fire hoses filled the air.

Students and faculty members at every point of the building assisted in the fire fighting or in carrying equipment and books from the burning building out to the wet lawn first. In a few minutes the quadrangle was cleaned, the students having filled Daniells Hall (men's dormitory) lounge and lobby with some of the salvaged material.

Among the many faculty members who sadly watched the walls crumble under the fire was Raymond A. Mortensen, PhD, professor and chairman of the department of biochemistry. He told SCOPE that a \$10,500 spectrophotometer which was installed very recently was too heavy to remove from the building. The fire, thick with black smoke, also consumed a \$6000 ultra centrifuge and a \$5000 gas chromatographer.

### Research in Jeopardy

Although much research material was saved, faculty members and students were seen searching for papers which had been authored through months and years of intense studies. Among them were Richard E. Beltz, PhD, associate professor of biochemistry, Thomas S. Mitchell and Lester L. Mohr, both sophomores in the School of Medicine. (See picture elsewhere in this issue.)

Risley Hall housed classrooms and laboratories which were used in teaching biochemistry, pharmacology and physiology. The students in the building at the time of the fire were freshmen in the School of Medicine. There were also a few graduate students.

The structure itself, which measured 33,700 square feet of floor space, is insured at its replacement value, and the laboratory equipment at its depreciated value, according to the University.

Research and laboratory equipment worth thousands of dollars was saved by the teachers and students who braved the fire to salvage some of the equipment.

Students from the University and Loma Linda Union Academy formed lines, too, and helped rescue the animals from a building adjoining Risley Hall. The staff veterinarian, Dr. Charles Hunter, had high praise for the students from all schools and the teachers who risked their lives to rescue the animals.

Two of three ostriches died after they were rescued from the smoke-filled animal quarters. Their death was due to fright rather than smoke or flames.

During the four-five hours of constant outpour, the water supplies were fully sufficient.



Would-be spectators become scurrying salvage crew as it grows apparent fire is more serious than first believed.

## Hospital Invites Photogs For Color Slide Contest

An all-university photo contest open to all employees, students and faculty of the University and Loma Linda University Hospital was announced this week.

All entries in the contest, the purpose of which is to establish a library of 35 mm color slides, must be delivered personally to the office of Richard G. Ubink, assistant hospital administrator, from February 17 to 28.

Each contestant must limit his number of entries to 20 slides. These must have been taken within the last five years. Slides which are already the property of the University are not eligible for entry.

Suggested categories are: Personnel, campus buildings, general campus activities, hospital activities, work situations or any combination of these categories.

A panel of judges will evaluate each entry to determine photographic quality and composition. First, second and third prizes, which have not yet been determined, will be awarded.

A payment of \$1 will be made for each slide kept for the library. Such will become property of the University and all others will be returned upon request.

Decisions of the judges will be final.

## Florida Hospital Elects LLU Alumni

Medical staff officers for 1964 at Florida Sanitarium and Hospital, Orlando, include three alumni of the University School of Medicine.

They are Ernest J. Stevens, SM'41, president; Carol C. Stanford, SM'55, secretary; and Warren L. Belding, SM'55, vice president.

President-elect is L. P. Brady, MD.

## Painting at World Fair To Depict Christ's Return

Artist Howard Sanden of the Billy Graham Evangelistic Association has completed a giant-size oil painting which will provide the backdrop for a unique Illumidrama presentation in the Protestant and Orthodox Center at the New York World's Fair.

Measuring 22 feet long by 10 feet high, the painting, with other dramatic effects, will help depict the theme of the Seventh-day Adventist exhibit, "He Is Coming Soon."

Other elements in Illumidrama include stereophonic sound, moving light and a three-dimensional treatment.

These will be coordinated to create a vivid presentation of events foretold in Scripture to take place at the end of the world.

The active presentation will be brief — not longer than three and a half minutes with approximately a half-minute interval between performances. The Scriptural message, Adventist officials say, will be undiluted.

## Bloomquist Speaker At Narcotics Meet

Among speakers at the fourth annual Narcotics Investigation Institute of Los Angeles State College is Edward R. Bloomquist, SM'49, associate clinical professor of anesthesiology in the University School of Medicine.

The institute began February 5 and will continue each Wednesday for four weeks at the Los Angeles police department building.

Conducted under the auspices of the Los Angeles State College department of police administration, the institute is offered for field officers and narcotics investigators working with law enforcement agencies.

Other speakers include Leopoldo G. Sanchez, Los Angeles municipal court judge, and Melvin Thale, Los Angeles County deputy district attorney.



Chaotic aftermath of fire finds every available space in Daniells Hall cluttered with items saved from the blaze.

University administrators lost no time in taking steps to continue an undisturbed class schedule for students.

They called a meeting only a few hours after the blaze was extinguished to determine where students would meet for classes that were conducted in Risley Hall prior to the fire.

Students met the following morning in Burden Hall where they were informed of where to attend classes.

Other departments and schools are making room for classes in pharmacology, biochemistry and physiology until permanent arrangements can be made.

The only student appointments that will not meet at regular times are several laboratory sessions. They have been suspended pending study of ways other laboratories on the campus might be adapted to accommodate their students and procedures, stated the University president.

At the committee which rescheduled classes were Chairman John E. Peterson, MD, assistant dean of the School of Medicine; Godfrey T. Anderson, PhD, University President; Robert L. Cone, vice president for financial affairs; Howard B. Weeks, newly appointed vice president for public relations and development; and department heads in the School of Medicine and the Graduate School.

Mr. Cone says it will not be possible to either accurately assess damage or to determine whether any part of the building is salvageable until after inspection.

## Book Talk

By IRENE SCHMIDT  
Associate Librarian

How to evaluate hymns and hymn tunes is discussed and illustrated by William Jensen Reynolds in *A Survey of Christian Hymnody* (Holt, Rinehart and Winston, Inc., 1963). The hymns and tunes used as illustrations "have come from the cathedral and the camp meeting, from liberal and conservative thought, from the well known and also the unknown, as mankind has sought to express his praise to God."

The development of Christian hymnody is approached through five major areas: (1) early church song; (2) the Lutheran chorale; (3) psalmody; (4) English hymnody; and (5) American hymnody.

The author states that there have been more well-edited hymnals published during the past thirty years than in any other period of American hymnody. Included among these is *The Church Hymnal* published by the Seventh-day Adventist church in 1941.

The "Note to the Student" explains metrical forms of hymns with examples of the most frequently used meters—common, long and short—so the reader may gain a deeper appreciation of the poetic expression of hymns.

## Loma Linda Births

ROBERTSON, Christopher Edwin, born to Cynthia and J. Melvin, SD'64, February 4.

WILLIAMS, Sondra Kay, born to Lillian, employed in nursing service at Loma Linda Sanitarium and Hospital, and Darrell K., PT'64, February 4.



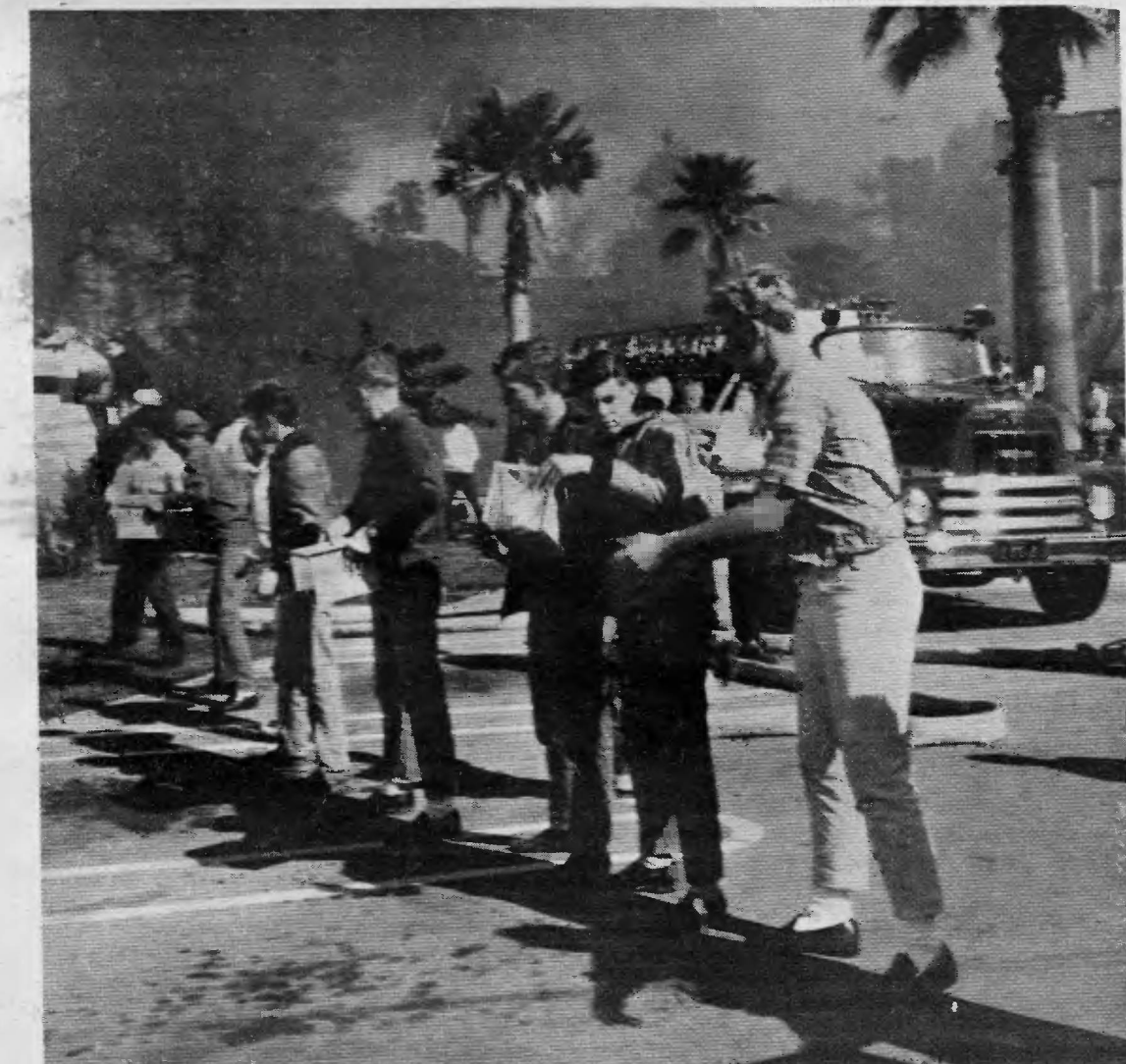
Wisps of smoke from basement of Risley Hall attract student interest. Inside teachers and students use fire extinguishers to put out small blaze caused by faulty light fixture.



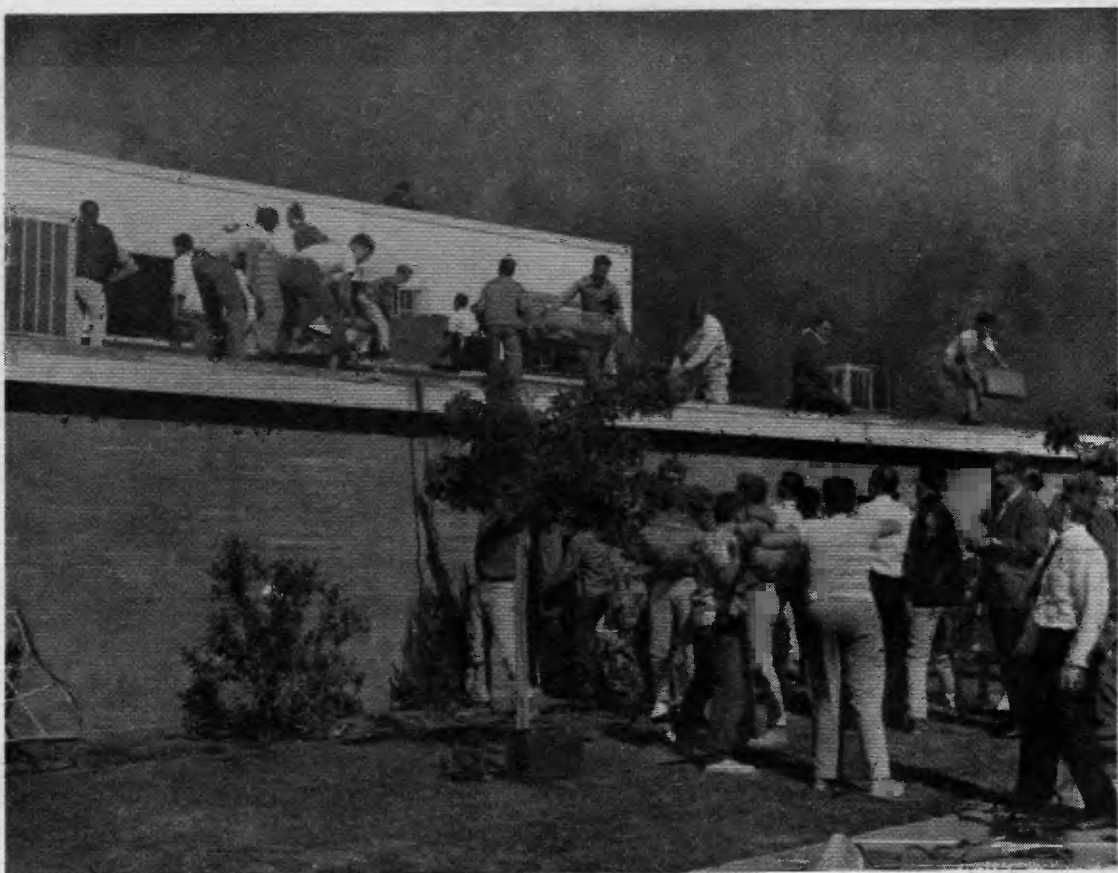
A strong wind fans flames and smoke billows over campus.



Loma Linda Union Academy students help carry rabbits to safety.



.. and pass the animals along to waiting trucks.



Small animals are rescued by Loma Linda Union Academy student volunteers.

### University Fire Covered by Many

Photographers were in abundant supply at the scene of last Wednesday's fire. The entire SCOPE staff was involved in gathering information which poured in for the story of the fire in cooperation with the University Public Information Officer John Parrish.

Credit for SCOPE pictures of the disaster is due Ellis Rich and Everett L. Mason, photographers of the University Audiovisual Service; Oliver L. Jacques, director of public relations; Jerry Wiley, manager of new publications; Mr. Parrish and Tor Lidar, editor of SCOPE.

Mr. Jacques, with his ever-ready polaroid camera, braved a precarious climb to shoot the scene of devastation on the third floor of Risley Hall. The page one photo was taken by the SCOPE editor from the top of the anatomy building for an all-encompassing view of the situation. The lead story on page one was written by the editor.



Several strong-armed men are required to subdue frightened ostrich and remove him from threatened area.

### SM Auxiliary To Tour Europe

A three-week tour of Europe sponsored by the Woman's Auxiliary to the Alumni Association, School of Medicine, will begin April 30 with an evening jet flight from New York to London.

There is no restriction on membership. The tour, a mission project for the ways and means committee, is open to all members of the auxiliary as well as to their relatives and friends.

Airfare of \$341.80 includes jet flights from New York to London, Brussels, Paris and back to New York. Cost for the land tour will be \$466 per person sharing room with twin beds and private bath in first class hotels. Sightseeing trips have been planned with time for leisure, shopping and visits to Seventh-day Adventist hospitals and institutions.

Highlights of the tour include London, Brussels, Luxembourg, a Rhine River cruise, Heidelberg, Salzburg, Vienna, Innsbruck, Lucerne and Paris.

Independent arrangements in Europe may be made by those who wish to take the flights alone.

With departure from New York, the tour may be combined with a visit to the New York World's Fair.

Details can be obtained by writing to Mrs. Charles B. Witt Jr., Woman's Auxiliary to the Alumni Association, School of Medicine, LLU, 316 North Bailey Street, Los Angeles, California 90033.

### PT Assn. to Meet At Biltmore Hotel

All faculty members and some students in the School of Physical Therapy will attend a meeting February 18 of the southern California chapter of the American Physical Therapy Association at the Biltmore Hotel, Los Angeles.

Speaking on the subject of "Thoracic Surgery and Its Pre- and Postoperative Aspect" will be Richard K. Hughes, MD, and Frank Allender, RPT.

Dr. Hughes is chief of thoracic and cardiovascular surgery at the Los Angeles Veterans Administration Center and assistant professor of surgery in residence at the University of California, Los Angeles.

A diplomate of the American Board of Surgery and the Board of Thoracic Surgery, he is also a candidate for the American College of Surgeons.

Mr. Allender, a graduate of Pennsylvania State University and Los Angeles Children's Hospital School of Physical Therapy, is chief physical therapist at San Fernando Veterans Administration Hospital.

### February 21 Set As Order Deadline

Friday, February 21 is the final day for acceptance of late orders for commencement announcements.

Graduate school candidates may order later if necessary.

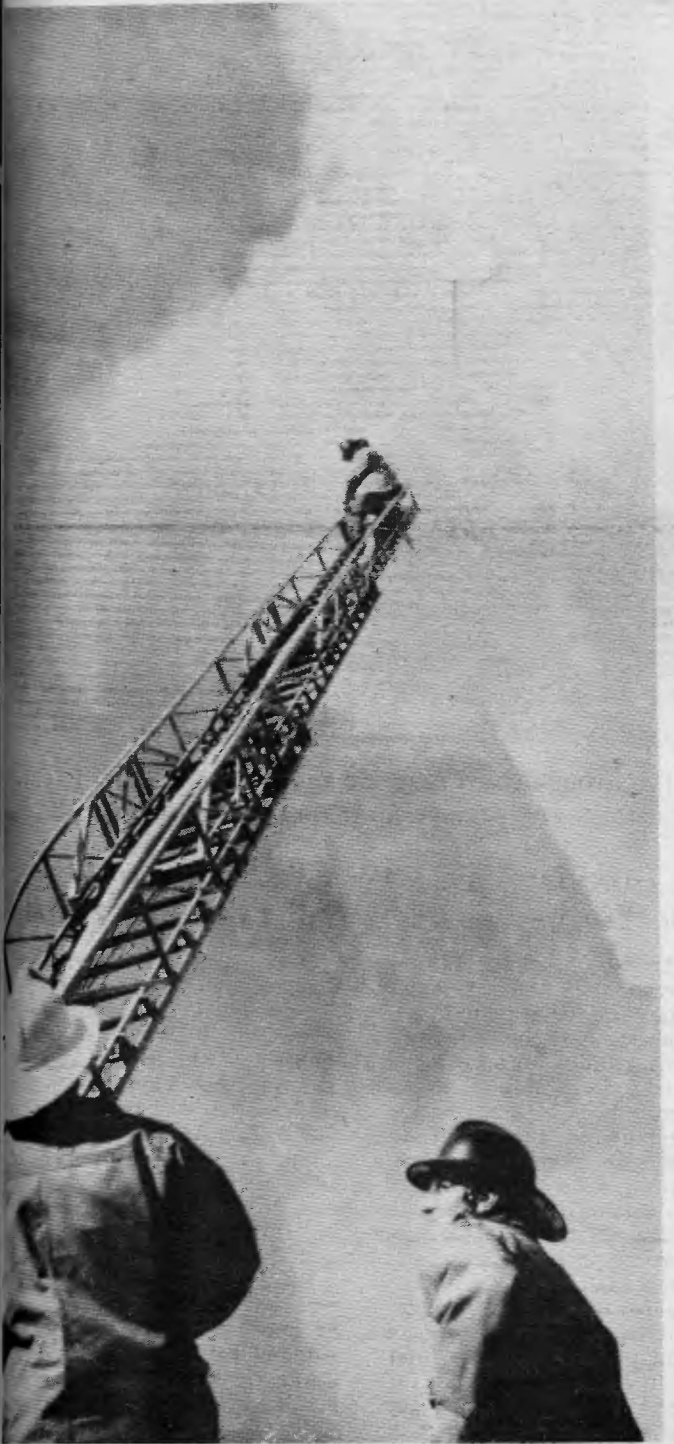
Announcements are expected to be ready April 27.



Flames persist and penetrate roof.



Firemen fight flames at east end of building.



Ladderman trains water on flaming inferno.



Registering one of the many who helped fight fire is Gertrude M. Williams from the personnel office.



Entire third floor is reduced to charred rubble heap.

### Dr. Hayden Lectures At Universities In Norway, Sweden

Jess Hayden Jr., DMD, PhD, assistant professor of anatomy, recently has completed a lecture tour of dental schools in Sweden and Norway, including the Eastman Dental Institute in Stockholm. The tour was by invitation of the schools and the United States Educational Foundations in Sweden and Norway.

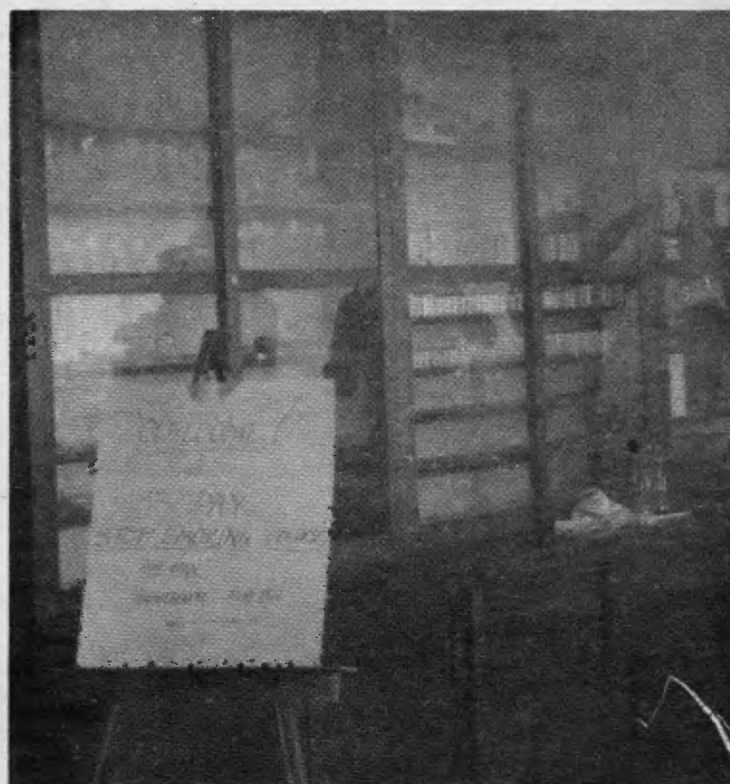
A Fulbright-Hays visiting professor at the Royal Dental College, Aarhus, Denmark, Dr. Hayden is on a leave of absence from the University.

The subject of his lectures was the "Anatomical Basis for the Administration of Anesthesia in Dentistry for Children." His presentation included the film "Local Anesthesia in Dentistry for Children," which was produced by Niels B. Jorgensen, DDS, Loma Linda University professor of oral surgery.

The remainder of the presentation was based on research done by Dr. Jorgensen, studies related to Dr. Hayden's doctoral thesis and further investigations carried out at Loma Linda University.

Dr. Hayden also gave a report on investigations concerning mechanisms of pulp healing and pulp reactions to medications. It was based on histologic investigations carried out by Clinton C. Emmerson, DDS, University professor and chairman of the department of pedodontics, research by Dr. Hayden and some recent research performed at the University of Michigan.

The staff at Aarhus, says Dr. Hayden, "favorably received" at a preliminary showing a color sound movie, "Jet Age Pedodontics,"



Circumstances twist meaning of once promising sign into iron as students carry valuable equipment to safety.

### Association Opens Loma Linda Branch

Dedication ceremonies Tuesday at 10 a.m. will mark the official opening of First Federal Savings & Loan Association offices in Loma Linda at 24885 Central Avenue.

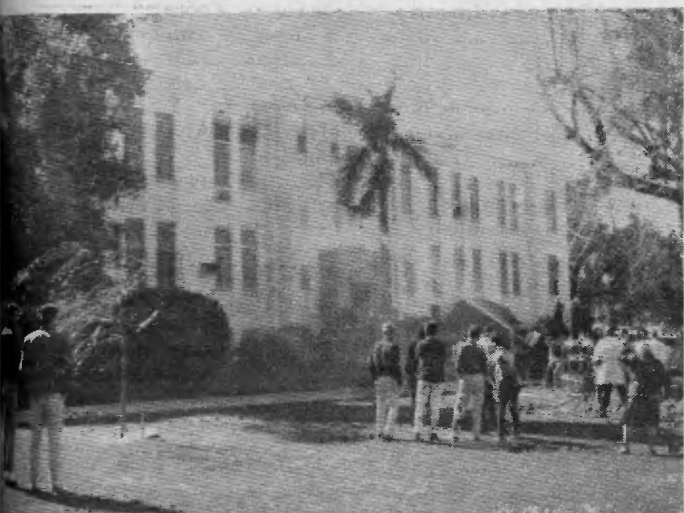
"Everyone is invited to visit our new offices during the opening. To make sure everyone has an opportunity to come in, we are making a two day affair of it with refreshments being

served by the Loma Linda Business and Professional Women's Club Tuesday and Wednesday," J. W. Snyder, president of the association announced.

Free educational gifts will be given to those who stop in any day during opening week.

"We are extremely anxious to bring this full-service office into being for the convenience of the many First Federal customers in the Loma Linda area," Snyder added.

University SCOPE, page 5



Strong wind from northwest makes control of fire almost impossible.

# Gillis, Spangler Accept Trustee Appointment

The University Trustees added two men to this institution's governing body at the January meeting. The new Trustees, Ithiel E. Gillis and Frank N. Spangler, now have accepted the appointment.

The Trustees also introduced William M. Landeen, acting La Sierra College president, as an ex officio member of the board, said Robert E. Osborn, secretary of the Trustees, this week.

The appointment of these men brings the total membership of the Trustees to 38. Chairman is Maynard V. Campbell, a vice president of the General Conference of Seventh-day Adventists.

The manager of Voice of Prophecy, Mr. Gillis has previously held the position of University Trustee, in which capacity he was the chairman of the Trustee development committee and a member of the finance committee.

Born in Oakland, California, 1903, Mr. Gillis is married to Reba C., nee Thruston. They have one son, Walter Jack Gillis, who was born in Seoul, Korea, while his father was the secretary-treasurer of the Korean Union. He held a similar position in the Indonesian Union and for ten years at the Voice of Prophecy.

Mr. Gillis is a graduate of Walla Walla College and an undergraduate of Pacific Union College. He is a member of Glendale Rotary Club.

Mr. Spangler, a private investor, was born in New Jersey. He says of himself that he has been self-employed most of his life, has had a turkey hatchery, milling business and farms.

A member of the executive committee of Southeastern California Conference and the Pacific Union Conference committee, Mr. Spangler lives in Hemet, California, where he has a farm. He has three children, one of whom is an entomologist.

Dr. Landeen was named acting president of La Sierra College after the death of Fabian A. Meier, PhD, the college president and member of the University governing body. He has been professor of history and chairman of the Graduate School department of history at Loma Linda University since 1962.

Acting President Landeen is a veteran of over 30 years in teaching and education administration. Starting his career in the history department of Walla Walla College, College Place, Washington, in 1933, he joined the department at Washington State University in 1939.

He was professor of history there until 1957 except for a 3½-year period in which he held an administrative post in the postwar Allied military government in Germany.

The 73-year-old college president is a native of Sweden who was graduated with the Bachelor of Arts degree from Walla Walla College and undertook graduate study at the University of Pennsylvania, University of Washington, and University of Michigan. He received the Doctor of Philosophy degree from the latter school in 1933.

## System Forms New Speed Reading Class

A second class in rapid and remedial reading is now being formed by the Dan/Ro System of Rapid and Remedial Reading. It will be taught on the Loma Linda University campus.

The present class, which has been filled, will meet Mondays and Wednesdays beginning February 17 in Cutler Hall at 7 p.m.

According to Dan Rosenwasser, originator of the system, the course will increase reading speed from three to ten times with better comprehension. Within the first five

## NASDAD Honors Glenn Curtis, DDS

The National Association of Seventh-day Adventist Dentists (NASDAD) recently presented a past-president plaque to Glenn H. Curtis, DDS, associate professor of oral medicine, at a board of directors meeting conducted in conjunction with the Great Lakes chapter of NASDAD. The meeting was conducted in Chicago during the Midwinter Dental Meeting there.

Others from the School of Dentistry who attended the NASDAD meeting are Charles T. Smith, dean; Edwin M. Collins, associate professor of oral medicine; and Lloyd Baum, associate professor of restorative dentistry. Dr. Collins serves as secretary of the organization.

The group also attended a dinner after the one-day session.



**ITHIEL GILLIS**  
New Trustee



**Frank Spangler**



**WILLIAM LANDEEN**  
Ex Officio Trustee

sessions, he says, the student will double his reading speed. "The average adult reads 277 words a minute with 62 per cent comprehension."

Persons interested in the 22-session course should call University extension 283 or 796-9105 after 5 p.m. The Dan/Ro System will accept collect calls in Beverly Hills at OL 5-4770.



Once immaculate laboratory is left a steaming shambles.

## Prominent Doctor to Visit Alumni-Student Convention

Hugo M. Kulstad, DDS, president of the International College of Dentists, will be present at the fourth annual School of Dentistry alumni-student convention to be February 19-23.

A diplomate of the American Board of Pedodontics, he is associate professor of pedodontics at the Loma Linda University School of Dentistry, where he has been on the faculty since 1956.

Dr. Kulstad graduated from Marquette University Dental School and did graduate work at the University of Southern California Dental School.

He was professor of public health dentistry at the University of California School of Public Health, Berkeley from 1948 to 1952. During this time he also served as chief of the division of dental health in the California State Department of Public Health.

In 1940 and again in 1950 he was a representative to the White House Conference on Childhood and Youth.

Author of over 50 articles for lay and professional journals, he holds membership in numerous societies, including the American Association of Public Health Dentists, the Federation Dentaire Internationale and the California State Dental Association.

Besides professional societies, he is a member of the Kern Philharmonic Society, the Rotary Club of Bakersfield, the Masonic Lodge and was for four years a Boy Scout Master.

## Staff Member To Address University Sponsored Meeting

"Eye Muscle Problems" will be the topic of a lecture presented by George K. Kambara, MD, clinical professor of ophthalmology, February 20 at the Azure Hills Country Club, Grand Terrace at 8 p.m.

The sixth in a series, the lecture is one of nine sponsored by the Loma Linda University School of Medicine, Division of Continuing Education, in association with the Riverside-San Bernardino chapter of the American Academy of General Practice.

A social hour at 6:30 and a dinner at 7:15 p.m. will precede the lecture.

All lectures in the series are scheduled for the third Thursday of each month.

## Alumna Featured At Nevada PTA

A question and answer period on cancer was conducted recently by Louis B. Tryer, SM'44, obstetrician and gynecologist,



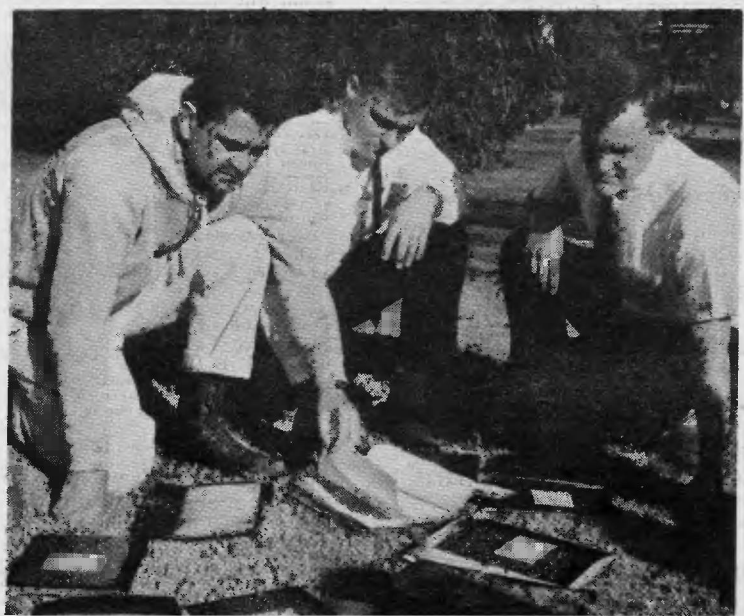
**HUGO KULSTAD, DDS**  
International Leader

at a meeting of the Battle Mountain, Nevada, Parent Teacher Association.

The session followed the showing of two films on the subject.

Born in China of medical missionary parents, she served a residency at Los Angeles County General Hospital after graduating from Loma Linda University.

In addition to running a private practice, she is on the board of directors of the American Cancer Society, Washoe County unit, and is a member of the Reno Business and Professional Women's Club.



Richard Beltz, PhD, associate professor of biochemistry, and School of Medicine sophomores Thomas S. Mitchell and Lester L. Mohr examine scorched remains of research data.

## This Week in History of LLU

**1917** President Percy T. Mangan wrote in a letter: "I'm getting a little money in a quiet way for a nucleus for a little library for our nurses and medical students in Los Angeles. At present we do not have as much as one book down there."

**1917** A report presented at a board meeting "showed that things were going much better financially than they have been in the past, and that we have evidently reached the bottom and are now starting on the up-grade. . . . The committee on salaries brought in a report advancing all wages. The teachers, however, voluntarily agreed not to accept more than a part of the advance offered them because of the straightened condition of our institution."

**1929** The council on medical education of the American Medical Association voted not to lower because of an osteopathic unit there the rating of the Los Angeles County General Hospital. The decision was important to the College of Medical Evangelists because of its interns there.

**1931** Arthur G. Daniells became president of the Trustees.

## Two Give Talks On Dental Health

A report on the School of Dentistry program of research in dental health was given by Ralph R. Steinman, DDS, associate professor of oral medicine, as the second in a series of medical lectures at the Arlington Seventh-day Adventist Church.

# PLACEMENT

A LOMA LINDA UNIVERSITY SERVICE

This column is open to Loma Linda students and alumni wishing placement free of charge.

## New Opportunities Overseas

### Dentists, General Practice

MIDDLE EAST DIVISION  
Aden Protectorate, ADEN. Few dentists. Pioneer type who can work alone. No S.D.A. there but English public school children can attend. Good potential  
SOUTHERN AFRICAN DIVISION  
Nyasaland, BLANTYRE CLINIC

### Dietitians

MIDDLE EAST DIVISION  
Libya, BENGHAZI. Dietitian-director of food service

### Nurses

FAR EASTERN DIVISION  
HONG KONG Director of nursing service of Tsuan Wan Hospital  
MIDDLE EAST DIVISION  
Libya, BENGHAZI  
Ethiopia, GIMBLE  
SOUTHERN AFRICAN DIVISION  
Katanga, LULENGELE. Belgian qualifications  
Bechuanaland Protectorate, KAYNE (RN and BS)  
Ruanda-Urundi, RWANKERI DISPENSARY  
Kenya, KENDU. Sister-tutor  
Uganda, ANKOLE.  
SOUTHERN ASIA  
India, NUZVID. Giffard Memorial Hospital. Teachers of nursing

### Physical Therapists

FAR EASTERN DIVISION  
Thailand, BANGKOK. Single

### Physicians, General Practice

FAR EASTERN DIVISION  
Thailand, BANGKOK  
GUAM  
South Thailand. HAAD YAI. Mission Hospital  
INTER-AMERICAN DIVISION  
Trinidad  
Puerto Rico, SAN JUAN. Self-supporting  
MIDDLE EAST DIVISION  
Libya, BENGHAZI  
NORTHERN EUROPEAN DIVISION  
Sierra Leone. Mission  
Nigeria, Ile Ife, Medical director  
SOUTH AMERICAN DIVISION  
Peru, JULIACA  
Peru, IQUITOS. Stahl Clinic.  
Staff physician  
SOUTHERN AFRICAN DIVISION  
Northern Rhodesia, KALABO, Yuka Hospital

### Physicians, Specialists

FAR EASTERN DIVISION  
Japan, TOKYO. Surgeon  
Thailand, BANGKOK. Internist  
SOUTH AMERICAN DIVISION  
Trinidad, PORT-OF-SPAIN. Surgeon  
NORTHERN EUROPEAN DIVISION  
Ethiopia, ADDIS ABABA. Surgeon

## Opportunities Overseas

### Dentists, General Practice

MIDDLE EAST DIVISION  
Libya, BENGHAZI  
SOUTHERN ASIA DIVISION  
Pakistan, KARACHI

### Dietitians

MIDDLE EAST DIVISION  
Libya, BENGHAZI. Dietitian-director of food service

### Nurses

SOUTHERN AFRICAN DIVISION  
Katanga, SONGA  
Nyasaland, BLANTYRE. Clinic

### Physical Therapists

MIDDLE EAST DIVISION  
Libya, BENGHAZI

### Physicians, General Practice

INTER-AMERICAN DIVISION  
British Guiana, GEORGETOWN. Davis Memorial Hospital  
SOUTHERN AFRICAN DIVISION  
Basutoland, MALUTI Hospital, for six months  
SOUTHERN ASIA DIVISION  
East Pakistan, GOPALGANJ

### Physicians, Specialists

FAR EASTERN DIVISION  
Japan, TOKYO. Internist  
State of Singapore, SINGAPORE. Internist—July 1964. Surgeon—July 1965. Both qualified.  
Thailand, BANGKOK: Radiologist  
INTER-AMERICAN DIVISION  
Puerto Rico, MAYAGUEZ: Bella Vista Hospital. Woman. OB-GYN  
Trinidad, PORT-OF-SPAIN: Radiologist  
Puerto Rico, MAYAGUEZ: Self-supporting neuro-surgeon, also self-supporting orthopedist  
Trinidad, PORT-OF-SPAIN: Surgeon, Radiologist. British qualified

## Opportunities, N. America

### Dental Hygienists

CALIFORNIA  
GLENORA: Two days a week

### Dentists, General Practice

MICHIGAN  
DECATUR: Associate with the understanding that the practice would be taken over upon entry of the present dentist into residency training.  
CAMDEN: Community constructing medical-dental professional building. Physician there, now want dentist  
ROYAL OAK: Eleventh year practice, office, and equipment for sale  
GRANT: Currently without dental service  
HALE: Community formed committee to work toward getting dentist  
CARO: Practice for sale. In clinic with two physicians  
CALIFORNIA  
FONTANA: Office and equipment for rent in thriving practice  
CAMBRIA: Opportunity to live in veritable paradise and enjoy a terrific future  
NORTH FORK: Insufficient dental coverage  
LOS ANGELES: Large clientele, two chair office, large practice  
LAKEWOOD: Dental office, equipment and furniture for rent  
SMITH RIVER: Members of Kiwanis Club feel there is real need for a dentist and are seeking one  
ONTARIO: Office for rent in 28 year established practice  
NORTH DAKOTA  
BEACH: New office, equipped, with practice built up over 25 years. Church, church school in the town. Original dentist wishing to retire.

### Medical Record Clerical Workers

COLORADO  
DENVER: Porter Memorial Hospital. Experience preferred

### Medical Technologist

CALIFORNIA  
NORCO: In medical center  
BELLFLOWER, Female. In medical clinic. Experience in x-ray  
CALIFORNIA  
VAN NUYS: Male or female. Five day week. Prefer one who screens pap smears

### Nurses

CALIFORNIA  
BELLFLOWER: Office nurse in medical group  
LOS ANGELES: Office nurse in medical group

### Physicians, General Practice

MICHIGAN  
BENTON HARBOR: Very active county medical society will welcome and assist in every way additional GP's interested in establishing practice there  
MILFORD: Replacement for physician going into resident training  
MUNISING: City seeking physicians. New medical office building completed in November of 1963

ARIZONA  
ST JOHNS: GP sought as county physician for Apache County. Office available in hospital

CALIFORNIA  
SMITH RIVER: To aid in the medical coverage of several cities in the area  
JACKSON: Need missionary minded physician

KANSAS  
LA CROSSE: Replacement for physician leaving plus other needs. Have consultants in every field

ILLINOIS  
JOLIET: Office in medical-dental suite  
WITT: No resident physician. Lions Club initiated a program to build a new office building to be rent free for some time to a physician who wishes to locate there

WASHINGTON  
ANACORTES: Shortage of physicians. Critical. Four active GP's in area where need for eight or ten

TENNESSEE  
CONCORD: Replacement needed  
INDIANA  
MULBERRY: Replacement for resident physician

ILLINOIS  
ELIZABETH: Has new modern medical center available for a resident physician. People seeking such a physician  
ALEDO: Several small towns in trade area without a physician. Need for two additional general practitioners.

CALIFORNIA  
RIVERSIDE: Medical officer for California National Guard. To do physicals as needed during the year and two weeks coverage during summer field training. Will receive commission as medical officer in California National Guard with Federal recognition. Two positions available

TENNESSEE  
ROAN MOUNTAIN: Free sanitarium site. To missionary-minded physicians. Located on most gorgeous mountain in Eastern America. Perpetually cool in summer. Cascading creeks, rich top soil. Numerous soft-water springs. Church. Church school

### Physicians, Locum Tenens

CALIFORNIA  
ARVIN: Six months relief for physician and general surgeon who will do relief in overseas service

CALIFORNIA  
LOS ANGELES: Almost any time, but spring and fall preferred

CALIFORNIA  
WASCO: Relief needed from June 15 to August 15. Good opportunity for anyone returning from foreign mission service. House available

TENNESSEE  
KINGSPORT: General practice with no OB or surgery for the month of June, or July, or August

### Physicians, Specialists

PEDIATRICIAN: Westminster, California. To join medical group  
SPECIALISTS: Palmdale, California. Good facilities  
OPHTHALMOLOGIST: Westminster, California. To join medical group

### Radiologic Technologist

Wanted middle aged male x-ray technician with good background in gross anatomy or experience in orthopedic x-ray procedure. Must be particular worker. Would consider part time help if live in Los Angeles area. Must be S.D.A. Write Loma Linda University Placement Service, Loma Linda, California. Give age, years of experience and references

### Secretary-Receptionist

CALIFORNIA  
BELLFLOWER: Experienced. In medical group. Appointments, filing, bookkeeper assistant.

### Personnel Seeking Positions

Cook  
1. Or matron. Prefer mountains of the south, will consider anywhere

### Cytotechnologist

1. Must work under one qualified then will take boards. Wishes Los Angeles area

### Dental Assistant

1. Experienced. Colored. In Los Angeles area

### Dentists, General Practice

1. Wishes associateship in San Francisco or Sacramento area  
2. Interested in leasing office in rural area or will exchange for something comparable  
3. In northern or central California or Arizona near 10 grade church school

### Medical Technologist

1. Prefers SDA group in smaller community in the West. Does some x-ray work

### Nurses

1. Office nurse-receptionist in Berrien Springs, Michigan

### Physical Therapist

1. Experienced physical therapist with graduate work in health education wishes full time work in physical therapy. Prefer soul winning clinic. Not in California. Livable salary desired

### Physicians, General Practice

1. Two who wish to associate in any area.  
2. Two who wish to associate in East Texas or northern California

### Radiologic Technologist

1. With SDA group in California  
2. With SDA hospital, clinic or group. Registered. Does some routine lab. Can furnish references

### Secretary

1. Receptionist in office in San Gabriel  
2. Medical. In Riverside, San Bernardino area. Good recommendations if needed. Seven years experience. Available in July

Additional listings not included in the column this week available upon request. Please specify the area of interest. Contact Loma Linda Placement Service, Loma 796-0161, ext. 434.

## PT Seniors Visit LA Area Hospitals

Seniors in the School of Physical Therapy recently visited various hospitals in the Los Angeles area to observe departments of physical therapy. The purpose of the visits, says Ronald A. Hershey, educational director, was to aid the seniors in selecting hospitals for their internships. After graduation seniors will work five months as interns, spending one month in each of

## Convention to Feature Caltech Glee Club on February 20

The fourth annual School of Dentistry alumni-student convention will feature the nationally-acclaimed Caltech Glee Club from California Institute of Technology February 20 in Burden Hall, Loma Linda.

The program at 7:30 p.m. will include religious and secular choral music by composers such as Berlioz, Palestrina, Byrd, Rachmaninoff and Vaughan Williams. The 55-voice choir under the direction of Olaf M. Frodsham will also present folk songs.

Popularly called "Men of Science in Song," the group has been heard on the west coast in concerts, on radio and on television and has been featured nationally with the United

States Marine Corps Band in the 1960 Winter Olympic's closing ceremonies.

Each year the club sings for critical adjudication in the Pacific Southwest Intercollegiate Choral Association festival, where it has always received the highest commendation.

Tickets for the concert can be obtained in advance at the dental supply office in the School of Dentistry, the Alumni Federation office or Loma Linda Pharmacy. For tickets by mail write to School of Dentistry Alumni-Student Convention, Administration Building Room 101. Admission is \$1 for adults and 75c for children under 12.

## Alumni Report SCHOOL OF NURSING

GENEVA BOWMAN, GS'58, is director of the School of Nursing at North York Branson Hospital, Willowdale, Ontario. Twenty-six students comprising the first two graduating classes successfully passed the provincial licensing examinations of Ontario. Currently enrolled in the school are 57 students.  
KATHRYN J. NELSON, SN'17, has written a 192-page biography of Kate Lindsay, nurse, physician, educator, author and missionary, and for whom the new women's residence hall on the Loma Linda campus is named. The book was published in 1963 by the Southern Publishing Association, Nashville, Tennessee.

RUTH L. HAMILTON, SN'63, became the bride of Henry Flynn at Arcadia, California, December 8, 1963.

MARGUERITE PEUGH, SN'45, has accepted the position of supervisor in the pediatrics department at Paradise Valley Sanitarium and Hospital, National City, California. She has served as director of nurses at Grand Prairie Hospital in Texas.

MYRNA L. HOSKIN, SN'63, was married to Douglas S. Arnold in Glendale, California, December 8, 1963.

LORRAINE PENNER, SN'59, was married to Fritts W. Thomas in a home ceremony November 3 in St. Louis, Missouri. On their honeymoon in Florida they visited with KATHY WOOLEY, SN'59, in Orlando.

Mr. Thomas is a chemical engineer for Monsanto Chemical Company, where he has worked for the past 12 years. She works as instructor-supervisor to non-professional employees at the new Shriner's Crippled Children's Hospital in St. Louis.

They recently moved into a new home at 1278 Bonheur Drive, Creve Coeur (St. Louis 41), Missouri. "If any of you come to the St. Louis area," she writes, "we want to throw out the welcome mat."

FLORENCE OSS DOSS, SN'46, Box 51, Blantyre, Nyasaland,

Africa, has observed Nyasaland join the ranks of other newly independent African countries during 1963. Now there is an ice cream shop and on occasion potato chips and angel food cake mixes can be bought. She writes, "Our great need in Africa is to provide small brick homes with asbestos roofs for our workers. Educated Africa is no longer in the 'mud hut age' and our hard-working pastors, teachers and medical workers deserve better homes. Unfortunately many still live in crumbling mud huts with leaking grass roofs. We are so glad that the 13th Sabbath overflow offering will provide new homes for a few more of these faithful workers."

## Women To Manage Savings and Loan Loma Linda Branch

The new Loma Linda offices of First Federal Savings & Loan Association located at 24885 Central Avenue, will be managed by Mrs. Eileen Freeburn, according to J. W. Snyder, president. Also assigned to the Loma Linda offices will be Mrs. Althea Gray, assistant office manager.

Mrs. Freeburn has been with First Federal at the San Bernardino office for 15 years. Mrs. Gray is a relative newcomer to Southern California. She and her husband, Irving E. Gray moved here from Spokane, when he accepted the position of assistant manager of the Loma Linda University Foundation.



FREEBURN



GRAY

## University Senate To Discuss Possibility of Federal Funds

The University Senate extends an invitation to all full-time faculty personnel to attend a special meeting February 24 at which the subject of "The Acceptance and Utilization of Federal Funds Within the University" will be discussed.

The meeting will be in Kate Lindsay Hall at 7:15 p.m. and

will feature M. E. Loewen, secretary of the General Conference public affairs and religious liberty department, who will define the denominational position. After his presentation a general forum on the subject will be conducted with questions from the floor.

The Senate, which advises the administration in matters of concern to the teaching faculties, comprises faculty members above the rank of instructor.

five hospitals. Their period of internship will be from June 22 to November 6.

They will then be eligible to take the state examination for qualification as registered physical therapists.



# Roy Garn to Conduct Course

The School of Dentistry has announced a continuing education course on "Emotional Appeal" to be conducted March 2 and 3 by guest lecturer Roy Garn, editor, author, educator and executive.

The course is open to all interested persons and will be conducted each day from 9 a.m. to 12:30 p.m. and from 2 to 5 p.m.

Mr. Garn, executive director of the Emotional Appeal Institute in New York City, is author of "The Magic Power of Emotional Appeal," now in its eighth printing and the result of more than 17 years of research.



**ROY GARN**  
Visiting Professor

A former editor of Parents Magazine Press and the recipient of many awards, he holds a Presidential Citation for the use of emotional appeal technique in helping to rehabilitate the physically handicapped.

His lecture engagements include appearances before many dental societies. In addition, he has been a featured clinician before the American Academy of Dental Practice Administration.

Topics to be discussed at the two-day session include "Self-Preservation and Money as Activating Emotional Appeals," "Romance as an Emotional Appeal," "The Amazing Benefits of Questions in Professional Relationships" and "The Six Ways to Use Questions in Professional Relationships."

Persons wishing to take the course should contact the School of Dentistry, Continuing Education Division.

## No Citation for Hospital Visitors, Only Employees!

Plant protection officers will not issue citations to Loma Linda University Hospital visitors for violations of parking regulations on the hospital grounds.

Only courtesy notices will be given. Ira L. Law, superintendent of the plant protection department, in making the announcement, said, "Without the patronage of these persons the hospital could not operate. Therefore, it is the desire of the administration to show its guests every courtesy that is consistent with the orderly operation of the hospital."

Citations will be issued to hospital employees, said Mr. Law, for parking violations.

**BEVERLY BUNNELL, SN'48**, writes that she and her mother will sail from San Francisco March 22 for mission service in Pakistan. In June 1963 she completed class work for a master's degree and hopes to finish her thesis before leaving.



Awesome clouds of smoke leave observers overcome with sense of helplessness. — Photo by Everett L. Mason.

# Events Calendar

## CHURCH CALENDAR

**Friday, February 14**

**UNIVERSITY CHURCH** — MV meeting, Mrs. Ernest von Pohle, of Tempe, Arizona, wife of 1936 School of Medicine graduate, "How to Have Heart": 7:45 p.m.

**WHITE MEMORIAL CHURCH** — Campus Fellowship, A. Graham Maxwell, PhD, director of the Division of Religion, "Why I am a Seventh-day Adventist," Olivet Chapel: 7:30 p.m.

**LINDA HALL** — MV meeting, "Sandy Gets Mixed Up," a play: 7:30 p.m.

**Saturday, February 15**

**HILL CHURCH** — Hour of worship, Pastor Wilbur K. Chapman, "Memories of a Good Man": 8:10 and 10:45 a.m.

**UNIVERSITY CHURCH** — Hour of worship, James M. Mershon, associate pastor: 8:15 and 10:55 a.m.

**WHITE MEMORIAL CHURCH** — Hour of worship, Morris L. Venden, minister of pastoral care, "Working Out My Own Salvation": 10:45 a.m. — Jack W. Provonsha, SM'53, associate professor of Christian ethics, "The Battle for Men's Minds": 4 p.m.

**Monday, February 17**

**UNIVERSITY CHURCH** — Convocation, Wilbur K. Chapman, pastor of the Hill Church, "To Sleep Well on a Stormy Night": 8 a.m.

**Wednesday, February 19**

**HILL CHURCH** — Midweek service, Varner J. Johns, retired minister, "By Faith Alone": 7:30 p.m.

**UNIVERSITY CHURCH** — University Bible Class, A. Graham Maxwell, PhD, director of the Division of Religion, discussing books of the Bible: 7: p.m.

**WHITE MEMORIAL CHURCH** — Midweek service, Morris L. Venden, minister of pastoral care, "Righteousness by Faith Alone," Olivet Chapel: 7:30 p.m.

**Friday, February 21**

**UNIVERSITY CHURCH** — MV meeting, Eldine W. Dunbar, associate secretary of the General Conference of Seventh-day Adventists: 7:45 p.m.

**WHITE MEMORIAL CHURCH** — Campus Fellowship, panel discussion, "The Challenge — to Make Men Whole," moderated by Louis L. Smith, SM'49, associate professor of surgery, Olivet Chapel: 7:30 p.m.

**Saturday, February 22**

**HILL CHURCH** — Hour of worship, Pastor Wilbur K. Chapman, "Promises to Keep": 8:10 and 10:45 a.m.

**UNIVERSITY CHURCH** — Hour of worship, Paul C. Heubach, professor of applied theology, "Men to Match Our Mountains": 8:15 and 10:45 a.m.

**WHITE MEMORIAL CHURCH** — Hour of worship, Pastor Donald G. Reynolds, "Christ's Question Without an Answer": 10:45 a.m. — H. Vincent Mitzelfelt, SM'60, minister of music, "Music Before and After Creation": 4 p.m.

## EVENTS, COMMITTEE CALENDAR

**Friday, February 14**

**COMMITTEE MEETING** — School of Dentistry executive committee, LL: 7 a.m.

**Saturday, February 15**

**BURDEN HALL** — Two Walt Disney films, "Mysteries of the Deep" and "Yellowstone Cubs," sponsored by the Palomar Nature Club: 6:30 and 8:30 p.m.

**LA SIERRA COLLEGE** — Danish gymnastic team, College Hall: 8 p.m.

**Sunday, February 16**

**ORGANIC GARDEN CLUB** — Bus trip to the Date Festival in Indio, depart from in front of flag pole: 10:30 a.m.



**HARRISON S. EVANS, MD**, (right) was the guest of Art Linkletter on nationwide CBS radio and television this week. The University professor of psychiatry explained for the "House Party" program's vast daytime audience factors of habit and human nature that combine to make cigarette smoking hard to stop. Unshakable determination to end the dangerous habit was foremost among his suggestions for those who would like to quit.

**ARROWHEAD SPRINGS HOTEL** — University student-faculty banquet, San Bernardino: 7 p.m.

**BURDEN HALL** — Two Walt Disney films, "Mysteries of the Deep" and "Yellowstone Cubs," sponsored by the Palomar Nature Club: 6:30 and 8:30 p.m.

**Monday, February 17**

**COMMITTEE MEETING** — School of Nursing faculty committee, LA: 1 p.m.

**Tuesday, February 18**

**HOME AND SCHOOL ASSOCIATION** — Herbert W. Henken, SM'46, obstetrician at Loma Linda Sanitarium and Hospital, "Teaching Moral Education," Loma Linda Union Academy chapel: 7:30 p.m.

**COMMITTEE MEETINGS** — Hospital administration committee, LL: 8:30 a.m. — President's committee, LL: 10 a.m. — School of Nursing faculty committee, LA: 3 p.m. — School of Medicine executive committee, LL: 4:30 p.m.

**Wednesday, February 19**

**SCHOOL OF DENTISTRY** — Fourth annual Alumni-Student Convention: 7:30 p.m.

**COMMITTEE MEETING** — Trustees-finance, building committee, LL: 2 p.m.

**Thursday, February 20**

**SCHOOL OF DENTISTRY** — Fourth annual Alumni-Student Convention. Day's activities begin with registration: 8 a.m.

**COMMITTEE MEETINGS** — Medical staff executive committee, LL: 11:45 a.m. — Division of Religion

staff, LL: 12 noon — School of Dentistry admissions committee, LL: 1 p.m. — School of Nursing faculty committee, LL: 3:45 p.m.

**BURDEN HALL** — Caltech Glee Club, presented by the School of Dentistry, Alumni-Student Convention: 7:30 p.m.

**Friday, February 21**

**SCHOOL OF DENTISTRY** — Fourth annual Alumni-Student Convention. Day's activities begin with commercial exhibits and table clinics: 8:30 a.m.

**COMMITTEE MEETING** — School of Dentistry executive committee, LL: 7 a.m.

**Saturday, February 22**

**CONVENTION TENT** — Walt Disney film, "The Incredible Journey," sponsored by the Dental Students Association (open to the public): 6:30 and 8:30 p.m.

**LA SIERRA COLLEGE** — Festival of Nations, College Hall: 7 p.m.

**MISSION CLUB** — R. F. Mattison, missionary on furlough from Mexico, at home of Dr. Morton M. Woolley, 655 Hillcrest Avenue, Flintridge: 7 p.m.

**IRMA JEAN GARD, SN'57**, visited Loma Linda recently to care for her mother, Mrs. Hazel Brown, during surgery at Loma Linda Sanitarium and Hospital.

**IRMA NICKEL, SN'53**, passed through Loma Linda recently, visiting friends and relatives on her way from British Columbia to Kettering Memorial Hospital, Dayton, Ohio.