



Loma Linda University
**TheScholarsRepository@LLU: Digital
Archive of Research, Scholarship &
Creative Works**

TODAY

Loma Linda University Publications

7-27-2012

TODAY - July 27, 2012

Loma Linda University

Follow this and additional works at: <https://scholarsrepository.llu.edu/today>



Part of the [Other Medicine and Health Sciences Commons](#)

Recommended Citation

Loma Linda University, "TODAY - July 27, 2012" (2012). *TODAY*.
<https://scholarsrepository.llu.edu/today/50>

This Newsletter is brought to you for free and open access by the Loma Linda University Publications at TheScholarsRepository@LLU: Digital Archive of Research, Scholarship & Creative Works. It has been accepted for inclusion in TODAY by an authorized administrator of TheScholarsRepository@LLU: Digital Archive of Research, Scholarship & Creative Works. For more information, please contact scholarsrepository@llu.edu.



REMEMBRANCES

Campus mourns the passing of a legend: G. Gordon Hadley, MD, 1921-2012

By James Ponder

Gilbert Gordon Hadley, MD, dean emeritus and professor of anatomy and physiology for the Loma Linda University School of Medicine, passed away on Thursday, June 29, from a blood clot related to cardiac arrhythmia. He leaves behind Alphie, his devoted wife of 68 years, and a large and loving family. He was 91.

Among the highlights of Dr. Hadley's remarkable six-decade career:

- Dean of the LLU School of Medicine, 1977-1986
- Assistant dean of student affairs, School of Medicine, 1963-1977
- Faculty member in pathology, School of Medicine, 1949-2012
- Secretary of health and temperance, General Conference of Seventh-day Adventists, 1986-1991
- President of Sir Run Run Shaw Hospital, Hangzhou, China, 1994-2001
- Global service in India, Afghanistan, and China, 1955-2002

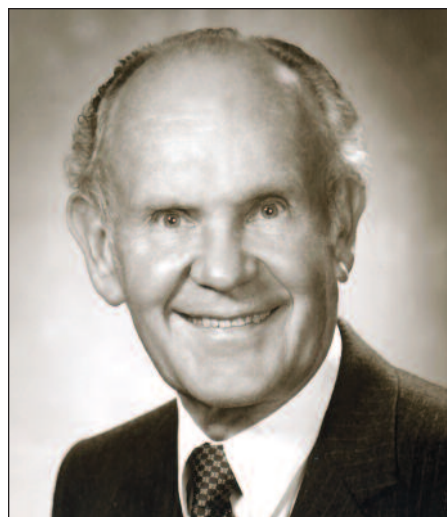
According to H. Roger Hadley, MD, current dean of the School of Medicine and Gordon Hadley's nephew, his uncle's life was all about service, loyalty, and commitment.

"It would be hard to overstate the legacy of Gordon Hadley," the dean observes. "From his overseas work in Afghanistan, China, and India, to his visionary leadership at Loma Linda University School of Medicine, he displayed an exceptional commitment to making the world a better place.

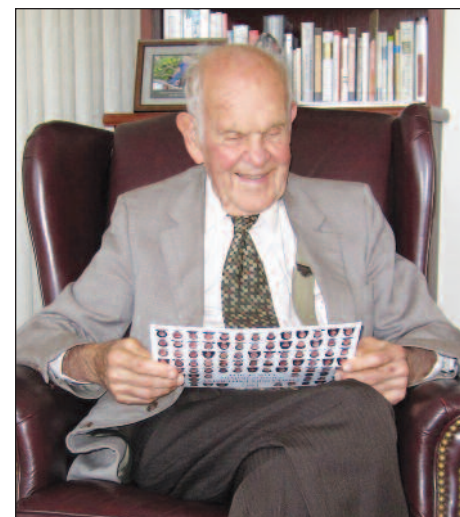
"During the nine years he served as dean, Dr. Hadley aligned the school with its early mission and set a firm and clear pathway to keep the focus on global outreach, spirituality, and service," he continues. "Adjectives fail to describe him—he was unexampled, principled, profoundly honest, tireless, selfless, humble, and energetic. He leaves an enormous imprint on this place."

Born May 3, 1921, at Washington Sanitarium in Takoma Park, Maryland, as the oldest of Dr. Henry Gilbert and Anna Virginia (Hafenmayr) Hadley's two children, Gordon and younger brother Henry Lee—who came on the scene 15 months later—grew up on the top floor of the sanitarium's mission clinic where their father cared for some of the poorest Americans.

As a boy, young Gordon dreamed of serving the underprivileged as a doctor. At 14, he made the momentous decision to dedicate his life to serving God and humanity. A few years later, he



Gilbert Gordon Hadley, MD, dean emeritus and professor of anatomy and physiology for the Loma Linda University School of Medicine, was famous for his ability to memorize the names of incoming students. In the photo on the right, taken in July 2011, he commits an entire new class to memory. Dr. Hadley passed away June 29 at the age of 91.



rejoiced when his application to the School of Medicine at the College of Medical Evangelists, as Loma Linda University was known at the time, was accepted.

With a dream in his heart, the idealistic scholar headed west to secure the education that would equip him for a life of service. In Loma Linda, classmate Charles Smick told him about a comely girl he knew from college named Alice "Alphie" Ruth Wagner. Gordon wasn't particularly interested until he saw a *Look* magazine photo essay that prominently featured Ms. Wagner working as a riveter at an aircraft

factory in Burbank. Gordon was smitten, but after a brief courtship, the future Dr. Hadley moved to Washington, D.C., for an internship. Technology came to the rescue. Gordon proposed over the phone and Alphie accepted the same way. They married on March 24, 1944, months before his graduation as a member of the class of 1944-B.

That same year, Uncle Sam ordered Dr. Hadley to France to care for wounded soldiers at the U.S. Army's 138th Evacuation Hospital, a surgical unit assigned to the front lines of the

Please turn to page 6

EXCELLENCE IN HEALTH CARE

U.S. News ranks Loma Linda University Medical Center No. 1 in the Inland Empire

By Herbert Atienza

For the third year in a row, Loma Linda University Medical Center is ranked No. 1 among all hospitals in Riverside and San Bernardino counties, and recognized as "high

performing" for 11 specialties, by the *U.S. News & World Report's* 2012-13 Best Hospitals rankings released on July 17.

Loma Linda University Medical Center received recognition for 11 specialties—up from 10

specialties last year—with geriatrics making its debut among the high performing specialties. Other specialties recognized as high performing are: cancer; cardiology and heart surgery; diabetes and endocrinology; ear, nose, and throat; gastroenterology; gynecology; nephrology; orthopedics; pulmonology; and urology.

Loma Linda University Medical Center was also ranked No. 18 among all hospitals in California, the first time *U.S. News* has assigned rankings for hospitals by state.

"We are extremely proud, yet humbled to receive the recognition of being the No. 1 hospital in Riverside and San Bernardino counties for three years in a row," Loma Linda University Medical Center CEO Ruthita Fike, MA, says.

"The rankings are based on benchmarks that are important to patient safety, the skills of our professionals, and the way we respond to the most trying medical cases, among other criteria," she adds. "This recognition affirms the commitment and hard work of everyone at Loma Linda University Medical Center to

provide the best care we can offer to our patients."

This year's Best Hospitals, the 23rd annual edition, showcases more than 720 of the nation's roughly 5,000 hospitals. Fewer than 150 are nationally ranked in at least one of 16 medical specialties. The rest of the recognized hospitals met a standard of performance nearly as demanding in one or more specialties.

Loma Linda University Medical Center ranked first among rated hospitals in the Inland Empire of Southern California, a metropolitan area encompassing more than four million residents.

The hospital rankings, says *U.S. News* health rankings editor Avery Comarow, are like a GPS-type aid to help steer patients to hospitals with strong skills in the procedures and medical conditions that present the biggest challenges.

"All of these hospitals are the kinds of medical centers that should be on your list when you need the best care," adds Ms. Comarow.

Please turn to page 2

MEDICAL OUTREACH

LLUMC overseas heart surgery team reaches out to Egypt

By James Ponder

Twenty-eight members of the Loma Linda University Medical Center overseas heart surgery team recently traveled to Alexandria, Egypt, to demonstrate a number of cardiothoracic procedures to that nation's physicians and surgeons. They also conducted a course on pediatric critical care to update Egyptian doctors, residents, and nurses on current best practices.

The Loma Linda team, which included medical, technical, and administrative support personnel, was in Egypt from April 26 to May 11.

Members of the Loma Linda delegation included:

- Richard H. Hart, MD, president of Loma Linda University
- Leonard L. Bailey, MD, chair of surgery at Loma Linda University Medical Center, surgeon-in-chief at Loma Linda University Children's Hospital, and pioneering infant heart transplant specialist
- Shamel A. Abd-Allah, MD, chief of pediatric critical care at Loma Linda University Children's Hospital and associate professor of pediatrics at Loma Linda University School of Medicine
- Aijaz Hashmi, MD, a cardiologist at Loma Linda University Medical Center and Loma Linda University Children's Hospital who specializes in adult congenital heart diseases and pediatric cardiology
- Nahidh Hasaniya, MD, PhD, associate professor of cardiovascular and thoracic surgery, and associate professor of pediatrics, at Loma Linda University School of Medicine
- Jim Eguchi, MD, assistant professor of pediatrics at the Loma Linda University School of Medicine and pediatric critical care physician at Loma Linda University Children's Hospital
- Mudit Mathur, MD, assistant professor of

critical care medicine at the Loma Linda University School of Medicine. Along with Dr. Abd-Allah, Dr. Mathur taught the last two days of the pediatric critical care course.

- Jerry Daly, MA, MSLS, associate director of the Global Health Institute at Loma Linda University
- Jan Zumwalt, MS, MBA, associate director of the Global Health Institute at Loma Linda University

According to Adam Shaban, MD, a physician licensed in Egypt and studying for his California licensing boards in Loma Linda, the team performed 12 to 14 difficult procedures—surgeries that had seldom been performed in Egypt before—on infants. An average of 10 to 15 Egyptian medical students or residents observed the operations. He notes that the overseas heart surgery team last visited Egypt in 2008.

"The potential for educating the next wave of Egyptian physicians and surgeons was tremendous," Dr. Shaban observes. He points out that pediatric cardiology surgery is not an established specialty in Egypt.

"Here in the U.S., we have many luxuries that we take for granted," he says. "But in Egypt, adult cardiologists routinely operate on pediatric patients. We're trying to change that."

For his part, Dr. Abd-Allah made sure the pediatric critical care course was not taken lightly. "The students had textbooks and he gave them an exam at the end of the course," Dr. Shaban recalls. "They had to pay attention and a lot of them did well."

One of the highlights of the trip was a banquet

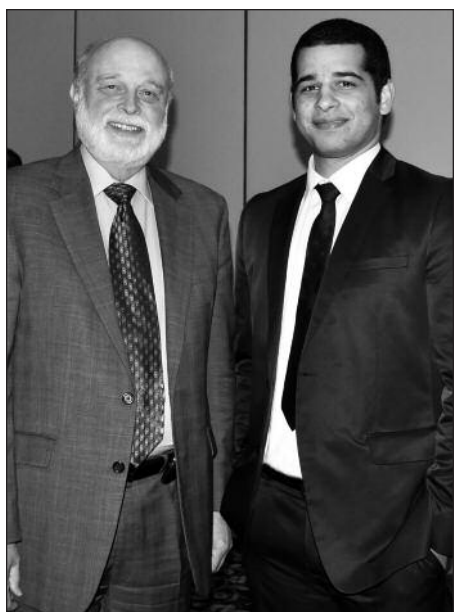
Please turn to page 3



Richard H. Hart, MD (left), president of Loma Linda University, and Osama Ibrahim, MD, president of the University of Alexandria, review an Arabic-language publication paying tribute to the overseas heart surgery team of Loma Linda University Medical Center during the group's recent trip to Egypt. The Loma Linda delegation of 28 health professionals demonstrated a number of cardiothoracic procedures and taught a course on current best practices in pediatric critical care. Dr. Ibrahim became president in 2011.



Leonard L. Bailey, MD (right), chair of surgery at Loma Linda University Medical Center, surgeon-in-chief at Loma Linda University Children's Hospital, and pioneering infant heart transplant specialist instructs a group of Egyptian surgeons on a complex cardiothoracic procedure during an operation to save the life of an Egyptian child. The overseas heart surgery team from Loma Linda University Medical Center was in Egypt from April 26 to May 11.



Richard H. Hart, MD (left), president of Loma Linda University, and Adam Shaban, MD, who recently graduated from the University of Alexandria, enjoy a moment of camaraderie during the recent visit of Loma Linda University Medical Center's overseas heart surgery team to Egypt. Because Dr. Shaban speaks Arabic fluently, he served as a liaison officer for the group, helping to arrange ground transportation and other important details.



An Egyptian mother and her infant child prepare to leave the hospital following a successful operation by members of the overseas heart surgery team of Loma Linda University Medical Center. The child was one of 14 operated on by the Loma Linda delegation. "Without these operations," notes Adam Shaban, MD, a recent graduate of the medical program at the University of Alexandria, "the babies would have had short-lived, poor-quality lives. Watching them leave, knowing they could now look forward to normal, healthy lives, was just incredible!"



Nancy Bailey (left) and Amir Osama, MD (right), meet the parents of the first infant discharged to return home after a successful cardiothoracic surgery by members of the Loma Linda University overseas heart surgery team. Ms. Bailey, a registered nurse, served as watch nurse on the trip. Dr. Osama is a prominent cardiothoracic surgeon in Alexandria, Egypt. The group traveled to Egypt in April and returned in May.

U.S. News ranks Loma Linda University Medical Center No. 1 in the Inland Empire

Continued from page 1

"They are where other hospitals send the toughest cases."

The rankings were published by U.S. News in collaboration with RTI International, a research organization based in Research Triangle Park,

North Carolina. Highlights of the 2012-13 rankings will appear in the U.S. News Best Hospitals 2013 guidebook, to go on sale starting August 28.

Complete rankings and methodology are available at: <health.usnews.com/best-hospitals>.

NATIONAL LEADERSHIP

LLU among top schools in the nation for producing family doctors

By Herbert Atienza

The journal *The Annals of Family Medicine* named Loma Linda University School of Medicine among the top schools in the nation to produce family physicians. Despite a declining national trend for medical schools to graduate family medicine specialists, Loma Linda University ranks third best in the country, according to the March/April 2012 edition of the journal.

"I am delighted that our students are selecting specialties that are very amenable to the practice of whole person care," says Roger Hadley, MD, dean of the School of Medicine.

"As more accountability is demanded from

health care providers by health care reform," he continues, "there will be an increasing dependence on family medicine physicians and the other primary specialties to assure the health of community members."

Dr. Hadley said the School of Medicine has implemented initiatives—such as programs in rural health family medicine and the combined preventive medicine/family medicine programs—that contribute to Loma Linda University's ability to increase the number of family medicine specialists.

Better reimbursements and financial incentives for family physicians would also help get more medical students interested in becoming one, Dr. Hadley says.



Family medicine physicians are becoming rarer across the country, but not at LLU School of Medicine. The school is the nation's third best in graduating family doctors, according to *The Annals of Family Medicine*.

According to *The Annals of Family Medicine*, the number of medical students entering family

medicine training has been going down. From 2001 to 2010, just over 9 percent of students in U.S. medical schools focused on family medicine. This downturn has become even more pronounced in the last three years, with only 8.1 percent of medical students choosing to specialize in family medicine.

The report said only 30 percent of practicing physicians in the U.S. are in primary care, while
Please turn to page 4

Overseas heart surgery ...

Continued from page 2

in honor of the Loma Linda delegation sponsored by Al-Orman, a charitable organization dedicated to eradicating poverty, and improving medical and social conditions in the Middle East. Dr. Shaban points out that Dr. Hart was able to attend the banquet.

"Although his schedule did not allow him to be with us the entire time, he was able to meet with Osama Ibrahim, MD, president of the University of Alexandria; Ashraf Saad, MD, dean of the Faculty of Medicine; and Khaled Karara, MD, chair of the cardiothoracic surgery program," Dr. Shaban says. "They presented medals to Dr. Hart and other members of the team."

While Dr. Shaban views international cooperation as an important way for Loma Linda University Medical Center to share its mission "to make man whole" with individuals in other parts of the world, he notes that for himself and other trip participants, the greatest reward was seeing what great improvements their work made in the lives of their little patients.

"Each patient became like family to us," he shares. "We weren't going to rest until the patient walked out the door. That was something that amazed me. Without these operations, the babies would have had short-lived, poor-quality lives. Watching them leave, knowing they could now look forward to normal, healthy lives, was just incredible!"

"We were also reunited with some of the patients from the previous trip in 2008," he concludes. "To see them four years later, living healthy lives, was a true blessing. It was great to learn that the Egyptian physicians and surgeons had successfully performed so many complex procedures that we taught them on previous trips. They have now trained at least four generations of residents, so you can imagine how many people have already benefited. It's very exciting to be part of this!"

WHAT'S YOUR PLAN?

Making a bequest to Loma Linda University, Medical Center or Children's Hospital will impact future generations with quality, innovative health care and education. Making a bequest commitment is the easiest way to make a gift this year without impacting your savings or investments. To learn more about the benefits of making a charitable bequest, contact us today.

For more information, call 909-558-4553, email legacy@llu.edu or visit www.llulegacy.org

MANY STRENGTHS.
ONE MISSION.



LOMA LINDA UNIVERSITY
Office of Planned Giving

LAUGHTER RESEARCH

New research shows that humor enhances short-term memory in elderly

By Heather Reifsnnyder

Gurinder Bains, MD, a PhD student in rehabilitation sciences, was invited to speak and present research on how humor improves memory in the elderly at two recent conferences—both the 25th conference of the Association for Applied and Therapeutic Humor, and Experimental Biology 2012, the latter put on by the Federation of American Societies for Experimental Biology.

The research showed that after elderly individuals (average age 74) watched a 30-minute humorous video, their learning ability, delayed recall, and visual recognition improved by 38.7 percent, 36.1 percent, and 6.6 percent respectively.

“With aging, the damaging effects of stress can impair the ability to learn and sustain memory,” says Dr. Bains. “Humor and the associated mirthful laughter can reduce stress by decreasing stress hormones, including cortisol and catecholamines.”

LLU produces more family doctors ...

Continued from page 3

most developed countries with good health systems have closer to 50 percent.

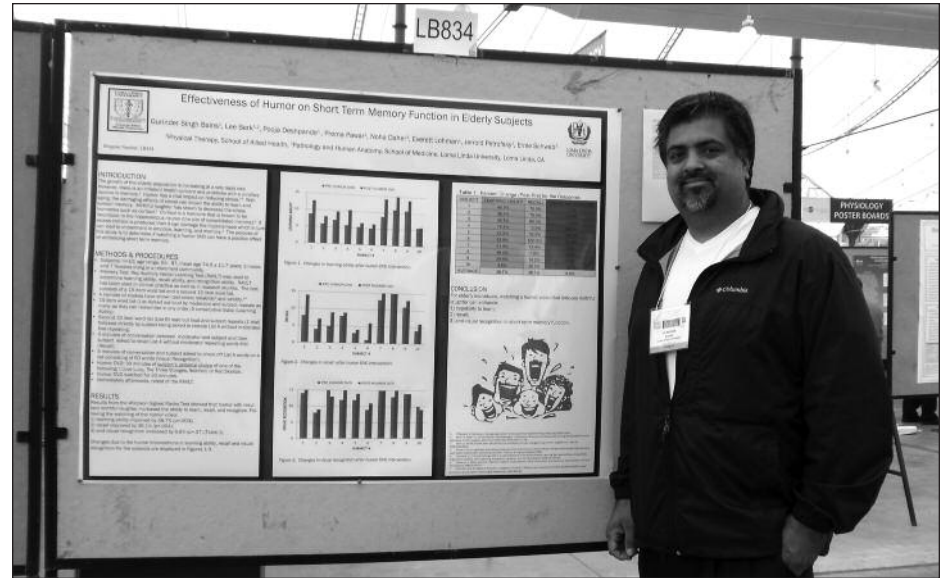
“We will not get to 50 percent producing less than 20 percent per year,” the report warned.

The top two schools are the University of Minnesota and University of Kansas.

The schools were ranked based on the number and percentage of students who entered family medicine over a 10-year period.

These hormones wear down the mind and body. Cortisol, for example, can damage the neural cells of the hippocampus, which is a part of the brain responsible for transforming information into new memories.

During this project, Dr. Bains was mentored by researchers from the School of Allied Health Professions and School of Medicine: Lee Berk, DrPH; Noha Daher, DrPH; Everett Lohman, DSc; Jerrold Petrofsky, PhD; and Ernie Schwab, PhD. Dr. Bains was also substantially assisted in conducting his research by physical therapy doctoral students Prema Pawar and Pooja Deshpande.



Dr. Bains presents his research at the Experimental Biology 2012 conference in San Diego.

PUBLIC HEALTH

Loma Linda to engage next generation of public health professionals August 16

By Heather Reifsnnyder

The California-Nevada Public Health Training Center is sponsoring an event August 16 at Loma Linda University School of Public Health designed to increase awareness of career opportunities in the public health workforce.

The event will introduce public health careers to students who are just getting started in higher education, as well as to individuals who are working in the health field in other capacities. It will demonstrate how public health can be integrated into a wide variety of health-oriented careers to enhance and strengthen the roles of health providers.

“Come and learn about how your future is affected by public health and how you can navi-

gate and find your path,” says Jesse Bliss, MPH, assistant dean for public health practice. “Public health surrounds us—in everything, everywhere, all the time.”

Loma Linda University School of Public Health is one of four universities collaborating to support the California-Nevada Public Health Training Center. The center is one of 33 in the National Public Health Training

Center Network, which is funded by the U.S. Department of Health and Human Services.

Loma Linda University School of Public Health, through the California-Nevada Public Health Training Center, offers educational activities that strengthen the core competencies and capabilities of the public health workforce.

The free event takes place from 10:00 a.m. to 3:00 p.m. on August 16 in the Centennial Complex, fourth floor. Pre-registration is required. This can be done online at <www.findyourpath.tk>. Please call (909) 558-8382 for more information.

RESEARCH IN NEWBORNS

Research details effects of pain in premature babies

By Heather Reifsnnyder

New Loma Linda University research demonstrates a connection between pain in premature neonates and corresponding oxidative stress—a chemical process that causes damage to humans at the cellular level. The results were published in the June 2012 issue of *The Journal of Pain*.

“To keep premature babies alive, they often require medical procedures which can result in pain and stress,” says lead researcher Danilyn

Angeles, PhD, associate professor of basic sciences. “Our goal is to find ways to decrease the pain the babies experience while they’re getting life-saving care.

“The method we established with this research measures oxidative damage caused by pain,” she continues. “It will improve the way we care for premature babies by testing the effectiveness of current methods used by clinicians to decrease pain and the resulting free radical damage to tissues.”

Continued next page

STUDENT EXCELLENCE

Loma Linda students form chapter of new honor society on campus

By Heather Reifsnnyder

On May 17, 25 nutrition and dietetics students were initiated into Phi Upsilon Omicron, a national honor society for students in family and consumer sciences.

Phi U national president Corine Carr attended the ceremony and pinned each student, plus two alumni and five faculty members. New members are from both the School of Public Health and the School of Allied Health Professions.

The idea to form a Phi U chapter at Loma Linda University grew out of the Nutrition Council Student Association, which students from both schools formed in 2009 to enrich their own education, unite together, and also educate others in nutrition.

The Phi U chapter took some time to establish, with the process being started by the nutrition council president for 2009-2011, Sahar Rahimi. The next year, the 2011-12 president, Helena Machaj Ramadan, and vice president Jackie Angulo worked to complete the process of

getting a new chapter approved, both by LLU leadership and Phi U’s screening process.

“Phi U gives LLU students the opportunity to gain national recognition for their hard work and taps them into a network of professionals who can help them advance in their careers,” says Ms. Rahimi, who graduated in 2011 with a BS/MA in nutrition and dietetics. She now works as a clinical dietitian for Southwest Healthcare System in the Temecula area.

In addition to establishing Phi U, the LLU Nutrition Council Student Association—which has now grown to include 64 students—has run an education program that aims to increase the knowledge of its own members as well as others. The students taught a cooking class at the School of Public Health’s Healthy People conference in March, worked booths at health fairs, organized guest lectures by registered dietitians, created a review course for the registered dietitian exam, and presented a conference designed to foster dialogue between future dietitians and future physicians on the LLU campus.



Kelli Hobby, public health student and the new Phi U president, is pinned by Dr. Corine Carr, Phi U’s national president for 2010-2012.

PHYSICIAN EXCELLENCE

Six LLUMC physicians receive 2012 Physician Recognition Awards

Contributed report

On June 12, 2012, the seventh annual Physician Recognition Awards were presented by Loma Linda University Medical Center, Behavioral Medicine Center, and LLU Health Care at the medical staff annual meeting.

The recipients are:

- Warren Peters, MD, preventive medicine: Whole Person Care Award (given in recognition of a physician who provides compassionate care as exemplified by the Good Samaritan)
- Larry Loo, MD, internal medicine, Education Award (in recognition of a physician who devotes outstanding efforts to provide graduate medical education through formal teaching, clinical mentoring, and serving as a role model)
- Greg Watkins, MD, radiology, Customer Satisfaction Award (in recognition of a physi-

cian who consistently provides outstanding service for patients and colleagues)

- Ihab Dorotta, MBChB, anesthesiology critical care, Quality/Patient Safety Award (in recognition of a physician who has improved quality and safety of patient care provided at LLUMC)
- Herb Ruckle, MD, urology/Transplant Institute, Leadership Award (in recognition of outstanding leadership by a physician at Loma Linda University)
- Clare Sheridan-Matney, MBChB, pediatrics, Professional Recognition Award (in recognition of a physician who has enhanced the academic reputation of LLU through leadership in national and international medical organizations, academic publications, and public service)

Physicians are nominated for these awards by employees, with recipients selected by the executive leadership council of Loma Linda University Adventist Health Sciences Center.



Larry Loo, MD



Ihab Dorotta, MBChB



Herb Ruckle, MD



Clare Sheridan-Matney, MBChB

STUDENT EXPERIENCE

Physical therapy students learn from seeing governing board in action

By Heather Reifsnyder

The Physical Therapy Board of California met at Loma Linda University on May 10. Second-year students from the entry-level doctor of physical therapy program attended to learn how their future profession is governed.

“There is always a lot being added and changed in any accredited profession, and it’s important to be aware of regulations and participate in forming them so that we can enhance our services for patients,” says student Oscar Hernandez.

The board met for routine regulatory business and reports, as well as a disciplinary hearing. A physical therapist who had temporarily lost her license asked to be reinstated early, but a decision is yet to be rendered.

Attendance was a class requirement for students in the physical therapy administration class taught by Larry Chinnock, EdD, MBA, associate chair of the physical therapy department.

“Within part of that class, students learn about

the physical therapy practice act that is administered by the Physical Therapy Board,” explains Dr. Chinnock. “It is beneficial for them to see the board that will issue their license after they graduate and to see how disciplinary actions can take place.”

The disciplinary part of the hearing did seem to leave an impression on students, according to evaluations they wrote after the meeting. They noted the importance of professionalism in both work and personal life, how difficult it is to win back a revoked license, and the importance of carefully documenting one’s practice.

Other students noted an increased understanding of how board members are chosen, as well as their role and methods.

The physical therapy board met at Loma Linda University at the invitation of James Syms, DSc, assistant professor of physical therapy and president of the California Physical Therapy Association.

The board is a government entity that regulates the physical therapy professions to

ensure patient safety. The association brings together the state’s physical therapists to advocate for the support they need to best serve patients. The ability for patients to directly see a physical therapist without a doctor’s referral, for example, is something the association is fighting for.

“I learned the importance of advocating for the

physical therapy profession so that services the public needs and deserves can be provided safely and effectively,” says Mr. Hernandez. “I also learned that I need to further educate myself on the law-making process so that I can correctly guide myself in educating our legislators to continue the process others have worked so hard to develop in achieving physical therapy direct access.”

Research details effects of pain in premature babies ...

Continued from previous page

In the study, Dr. Angeles and colleagues assessed the effects of pain caused to 38 hospitalized neonates when tape used to secure catheters to their skin was removed.

The pain that resulted from the tape removal was measured using an established assessment tool called the premature infant pain profile. Pain scores were higher in these infants than those in the control group.

More importantly, oxidative stress was higher in the test group, as indicated by the increased

presence of uric acid and malondialdehyde in blood plasma. Only babies who already had plastic catheters in their blood vessels were tested so that no additional needle sticks were necessary.

In addition to Dr. Angeles, other Loma Linda University researchers contributing to the study included Laurel Slater; Yayesh Asmerom, MS; Danilo S. Boskovic, PhD; Khaled Bahjri, MD, MPH; Megan S. Plank; Katherine R. Angeles; Raylene Phillips, MD; Douglas Deming, MD; Stephen Ashwal, MD; Kristen Houglund, MD; and Elba Fayard, MD.



Members of the Physical Therapy Board of California discuss business during their May meeting at Loma Linda University.

EDUCATIONAL OUTREACH

LLU begins new program in Haiti to improve rehab services for the disabled

By Heather Reifsnnyder

The School of Allied Health Professions just launched a program in Haiti to deal with one of the country's most glaring needs—rehabilitation treatment for the disabled. Sixteen Haitians are now studying for a certificate that will allow them to serve as rehabilitation technicians. The program is one of the first of its kind in the country.

After the students graduate in February 2013, they will help their neighbors regain physical functionality that was lost in the 2010 earthquake or through other circumstances.

New student Edgard Bommier is happy to study in the program because “my people need it.” He is from the destroyed town of Léogâne, the epicenter of the 7.0 earthquake in 2010, where many people now live with amputations.

The certificate program is based at a sister hospital and university to Loma Linda University—Hopital Adventiste d’Haiti and Univer-

site Adventiste d’Haiti in Carrefour, outside Port-au-Prince.

It is designed to fill a major gap in the country's medical infrastructure, which boasts a few Haitian physical therapists, but no Haitian occupational therapists. This is for a country that, even before the earthquake, had an estimated 10 percent of its population disabled.

That percentage has only grown since then. To date, many patients have had to rely on international workers for rehabilitation services. But the numbers of foreign volunteers are starting to dwindle.

“Comparing the current poverty of rehabilitation services in Haiti to the almost insurmountable number of individuals with disability made me realize we needed to do something about this dire situation,” says Everett Lohman III, DSc, program director and professor of physical therapy at LLU. He has volunteered in Haiti numerous times since the earthquake.



In their brand-new classroom, the new Haitian students express their excitement for the program. Celebrating with them are 11 allied health students visiting from the home campus for a mission trip.

Classes began June 18 and are taught by LLU professors, alumni, and other instructors who travel there a week or two at a time. Heather Thomas, PhD, co-director of the program and associate professor of occupational therapy at LLU, taught their first course, which was a weeklong introduction to rehabilitation.

“From day one, I was just so incredibly impressed with their enthusiasm for being in the classroom. They said, ‘You can count on

us,’” says Dr. Thomas. “When I ask a question, so many hands go up, and some of them want to answer twice. But I was also blown away by their answers.”

For example, she gave the students a case study about a woman she treated who suffered a stroke during childbirth and now had a baby to care for. She asked them their ideas for helping the new mother.

Please turn to page 10

Campus mourns the passing of a legend: G. Gordon Hadley, MD, 1921-2012 ...

Continued from page 1
European theatre in World War II.

In 1946, Dr. Hadley returned to Loma Linda at the invitation of pioneering medical educator Carroll S. Small, MD, to take a three-year pathology residency. He was one of four physicians in the program's inaugural year. After completing the residency, Gordon and Alphonse moved to Los Angeles, where he taught pathology at Los Angeles County General Hospital and White Memorial Hospital (now Medical Center).

In the early 1950s, Los Angeles offered everything a budding pathologist could want. The area's remarkable climate and blossoming prosperity framed an ideal context in which Gordon Hadley trained future physicians and performed groundbreaking research. It also provided a stable environment for the three Hadley children: Patty, Walter, and Bonnie.

But when the opportunity arose in 1955 for nine months of temporary mission service in India, Dr. Hadley felt torn between his comfortable career and his commitment to serve the underprivileged. Inspired by his mentor Carroll Small, Gordon came home one day and told Alphonse he wanted to move the family to India.

It was a move he never regretted. Nine months stretched into three years, but by then, Dr. Hadley was firmly hooked on overseas service. When officials of the Adventist Church asked him to investigate ways the organization might bolster the medical infrastructure of Afghanistan, he was quick to accept. One thing led to another and in 1960 the Hadleys moved to Kabul, where he taught at a local medical school. They returned to Afghanistan many times between 1963 and 1972, sometimes as guests of the Afghani government, sometimes at the bidding of the World Health Organization. The Hadley family even lived in the ancient historical city of Jalalabad for two years during the 1970s.

While in Afghanistan the second time, Gordon received an invitation from David Hinshaw Sr., MD, then dean of the newly renamed Loma Linda University School of Medicine, to serve his alma mater as assistant dean of student affairs. He accepted, moving the family back to Loma Linda in 1963 and serving with Dr. Hinshaw Sr. and his successor, Harrison S. Evans, MD, until 1977. At that time, Gordon Hadley became dean of the school.

It was an honor for which he was singularly prepared. Motivated by selfless service, the new dean saw the position as an opportunity to strengthen the organization's emphases on global mission and spirituality.

The affable dean went out of his way to make sure students knew their commitment was appreciated. To do that, he pored over small black-and-white photographs attached to the

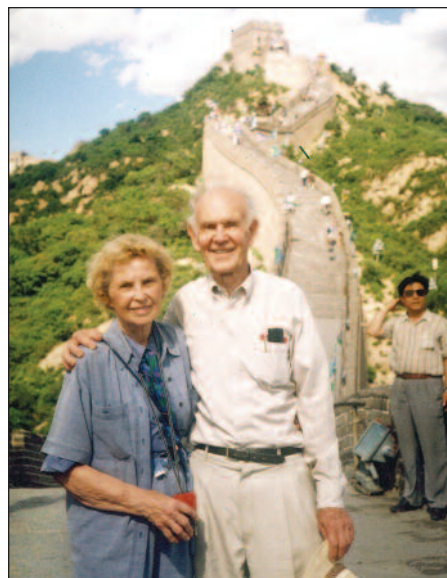


G. Gordon Hadley was a member of the School of Medicine class of 1944-B at the College of Medical Evangelists, as Loma Linda University was called at the time.

applications of incoming students, memorizing each name and face. Then he sought them out and welcomed them by name.

In 1986, after nine years as dean, Gordon Hadley accepted the position of health and temperance secretary for the General Conference of Seventh-day Adventists in Silver Spring, Maryland.

In 1991, he returned to Loma Linda to evaluate the medical school curriculum. His method was slightly unorthodox: Dr. Hadley embedded himself as a member of the class of 1994, attended every class, and sat for every examination. After “graduating” from medical school the second time in his life, he and Alphonse packed their bags and headed to Hangzhou, China, later that year where, at the tender age of 73, Dr. Hadley became CEO of the newly founded Sir Run Run Shaw Hospital.

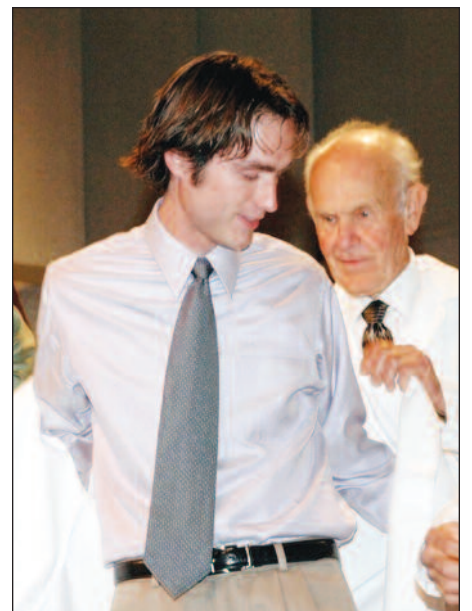


During the final year of Gordon Hadley's presidency of Sir Run Run Shaw Hospital, he and Alphonse took time for sightseeing on the Great Wall of China. The program for his July 7 memorial service contained 12 pages of tributes from his Chinese colleagues.

Members of the staff expressed amazement at the humble leader's indefatigable commitment to helping the institution achieve its goal of becoming one of the premier hospitals of Asia. Daughter Bonnie recalls that after her parents returned to North America in 2001, Dr. Hadley was flown back to Hangzhou to receive an award from the People's Republic of China for his role in helping the hospital achieve its important goal.

At Gordon Hadley's memorial service in the Loma Linda University Church the evening of Saturday, July 7, 2012, the 600 guests heard tributes to his remarkable accomplishments from: Bill Wagner, MD, his colleague from the class of 1944-B; Yousuf Sadiq, MD, an internist who worked with Dr. Hadley in Afghanistan; and Bryan Fandrich, MD, a critical care physician who trained under him in China. Although none of the staff of Sir Run Run Shaw Hospital

Continued next page



G. Gordon Hadley, MD (right), dean emeritus of the Loma Linda University School of Medicine, helps Nathaniel Whitney, MD, a member of the class of 2008, into the proper attire for the white coat ceremony for his class, which was held in 2005.



Tony Yang, MBA

NEW LEADERSHIP

New assistant vice president for public affairs named

By Dustin Jones

Tony Yang, MBA, has been named assistant vice president for public affairs for Loma Linda University and its Health System. He will oversee the departments of advancement films, marketing, and public affairs with system-wide responsibilities.

"Loma Linda has a great story to tell," Mr. Yang

says. "With a long, rich history of service, excellence, and an unwavering commitment to our mission, Loma Linda University remains committed to the qualities that continue to define who we are today. I look forward to a collaborative approach to telling that story in a fresh, exciting, and strategic way."

Mr. Yang brings to his position extensive marketing and public relations experience in the

fields of education and health care. Additionally, he has consistently produced award-winning work recognized by health care marketing and public relations associations.

Before starting in his new role on June 18, 2012, he served as executive director of health sciences public relations and marketing for the University of Southern California (USC), where he provided key leadership in branding, service line marketing, physician marketing, Web/digital marketing, and public/media relations. Prior to joining USC, he was director of marketing and business development at Methodist Hospital, a 460-bed medical center in Arcadia, California.

Before that, Mr. Yang worked in health care at Glendale Adventist Medical Center, Glendale, California, where he served as director of marketing and communication. While at Glendale, he led the award-winning, yearlong centennial celebration while launching an integrated service line marketing campaign.

He began his career as an on-air television news reporter, where he worked with several network-affiliated stations in Los Angeles and several other cities across the country. He holds a bachelor's degree in public relations from Pacific Union College, Angwin, California, as well as a master's degree in business administration from La Sierra University, Riverside, California.

Mr. Yang enjoys spending time with his wife and three young daughters, playing golf, and playing the guitar. He can be reached at (909) 558-7000 or <thyang@llu.edu>.

Gordon Hadley ...

Continued from previous page

were able to attend, 18 of his Chinese colleagues wrote an impressive 12 pages of glowing, often humorous, tributes to Dr. Hadley.

Although out of the country at the time, Richard H. Hart, MD, DrPH, LLU president, received the news with sadness.

"Gordon Hadley will be remembered for many things," Dr. Hart noted, "including knowing students by name, global service, and his love for Afghanistan, China, and India. But my memory will be around his and Alphi's humility and modeling of servant leadership. Their willingness to tackle any task and accept any role that would benefit Loma Linda and the Church is a model of commitment to others. This institution will live long in his shadow."

As he brought the memorial service to a close, Roger Hadley jested that the Loma Linda University School of Medicine had no need for face recognition software while Gordon Hadley was alive.

"We didn't need iPhoto," Roger Hadley quipped as an image of Gordon Hadley memorializing students' faces flashed on screen. "We had iGordon for that."

As a tribute to the life and service of Dr. Gordon Hadley, the family asks that gifts be made to the School of Medicine's Deferred Mission Appointee program. Gifts may be made online at <www.llu.edu/giving/dma>. Individuals who prefer to contribute by phone may call the office of philanthropy at (909) 558-5010. Checks made payable to "Loma Linda University—DMA Program" may be mailed to the office of philanthropy, Loma Linda University, P.O. Box 2000, Loma Linda, CA 92354.

VeggieTales Live!

GOD MADE YOU SPECIAL

See Bob, Larry, and your favorite Veggie friends in the only California performance of the west coast **LIVE** tour!

Sponsored by

- Calimesa Community Concerts
- Loma Linda University Church Children's and Family Ministries

For More Information: (909) 307-4849

Tickets by MasterCard or VISA

- Call (909) 307-4849

Tickets by Cash or Check

- ABC Christian Bookstore, Loma Linda
- ABC Christian Bookstore, Riverside
- Berean Christian Bookstore, Redlands
- Berean Christian Bookstore, Riverside

Ticket Prices (All seats reserved)

- \$25 VIP front center (includes "meet and greet" with the performers for photos)
- \$20/\$15 main floor/balcony
- \$10 wings

(\$5 additional charge for tickets at the door)

Loma Linda University Church
11125 Campus Street, Loma Linda
Sunday, October 14, 2012, 5:00 p.m. (doors open at 4:00 p.m.)

Join us on Facebook | Follow us on Twitter

INTERNATIONAL HOSPITALITY

International visitors enjoy a bit of road therapy on Global Health Institute trip

By James Ponder

Every three or four months, Bing Frazier, program coordinator for the Global Health Institute of Loma Linda University, organizes a trip to introduce a group of international visitors to scenic wonders of California or the Southwest.

The trips—which are designed to offer our guests a break from intensive, two-month-long mentorship programs in their respective professional specialties—are events in themselves, offering our international visitors a chance to meet the land and people of America on a personal basis.

Sometimes they're good for a laugh. Take last April, for instance. Jason Polanco and I are driving a group of six Chinese guests and one from Thailand on a tour of Yosemite, San Francisco, the Monterey Peninsula, and Big Sur when he gets a seriously funny look on his face. For some reason, Jason finds it hilarious that the waitress in the only Caribbean restaurant in Bakersfield just called me "Honey."

"So how far is it to Yosemite, Honey?" he asks, dragging the last syllable to a painful conclusion with an understated impish grin.

"According to Mapquest," I reply, biting my lip to suppress a smirk, "it will only take the rest of us two and a half hours. You, however, should arrive tomorrow afternoon because you'll be walking if you ever call me that again."

I turn to relish the sweet taste of victory. It doesn't last long. In the very next instant, the waitress returns to set a platter of empanadas in front of me.

"Here you are, Hon," she says with a smile of untainted innocence. Jason can hardly control his laughter.

His antics notwithstanding, it's good to be back on the road. I'm very happy that "May" Lu Huaqing is with us. I first met May at Sir Run Run Shaw Hospital in 2009 when she coordinated every detail of my stay in China. Warm-hearted and kind, May works as an

international service coordinator at the hospital and brings a contagious love of adventure and boundless optimism to the excursion. It's great to see her again.

It's also delightful to have "Betty" Huang Melei with us again. Betty, who works as an ENT nurse at Sir Run Run Shaw Hospital, went with Jason, Praktan Kokila, and I on a Global Health Institute trip to the Grand Canyon in February. She enjoyed it so much that she postponed her flight home by one week just to join us for this excursion. We hope she enjoys this trip immensely.

We're also excited about getting to know the other members of our entourage:

- Chutikarn Chatrung, who says to call her "Fun," a nurse from Boromarajonane College of Nursing in Bangkok, Thailand, is working on a PhD in public health nursing at LLU.
- "Lucy" Lu Yahong is a hematology/oncology nurse at Zhejiang University Children's Hospital in Hangzhou, China.
- "Jean" Xu Jing, MD, is an anesthesiologist at Sir Run Run Shaw Hospital in Hangzhou, China.
- "Cindy" Zhao Yilei, MD, is a professor of radiology at Zhejiang University School of Medicine in Hangzhou, China.
- "Tony" Zhang Feng, DDS, is a pediatric stomatologist at Zhejiang University Children's Hospital.

The next morning, Jason and I start to hike the slippery trail to Bridalveil Fall in Yosemite National Park. The incline is steep and the heavily saturated mist soaks our clothes, but we plod forward undeterred. Three-quarters of the way up, May zips by like a trout chasing mosquitoes. When we reach the bridge at the base of the falls, she's ready to head back down. When we finally descend to the bottom of the trail, May is casually sitting in a patch of sunlight smiling from ear to ear.

After stops at Yosemite Falls and Half Dome, we head to the Ansel Adams Gallery to admire the modernist masterpieces. The photographs are great, but a framed metal sculpture of colorful maple leaves captures Betty's attention.



International participants in the mentorship programs of the Global Health Institute at Loma Linda University kick up their heels during a recent four-day trip to Yosemite National Park, San Francisco, the Monterey Peninsula, and Big Sur. (Left to right): "Jean" Xu Jing, MD; "Cindy" Zhao Yilei, MD; "Lucy" Lu Yahong; "Tony" Zhang Feng, DDS; "Betty" Huang Melei; "Fun" Chutikarn Chatrung; and "May" Lu Huaqing. Lucy was declared the honorary mayor of Lucia, a seaside hamlet at Big Sur, by her two-stepping colleagues.

Her smile speaks volumes about her enjoyment of nature and love of beauty and art. The rest of us wait on the porch watching a swarm of bumblebees buzz their nest while Betty purchases her treasure.

Later that afternoon, Tony and Lucy shoot snapshots at the speed of machine gunners as we cross the Bay Bridge into San Francisco. Jean, Fun, and Cindy "ooh and aah" at the majestic appearance of The City by the Bay. May says the skyline reminds her of Hangzhou.

Over dinner at Modern Thai restaurant that evening, Fun informs us that the only substantive difference between the exquisite cuisine here and the food back home in Bangkok is a matter of temperature. In Thailand, the same dishes would be several magnitudes hotter thanks to a considerably more generous infusion of chilies and spices. After dinner, we drive up the steepest streets in the United States and down the other side before calling it a day.

The next morning, our guests opt to walk down Lombard Street, "the crookedest street in the world." The sky is sunny and clear; a handful of clouds drift across San Francisco Bay on this picture postcard day.

The afternoon turns out to be the gilded, magical center of the journey. After a visit to the beach at Carmel, the group opts to explore the galleries of this fabled art colony for a memorable hour before heading up 17 Mile Drive. When we get there, the Lone Cypress stands guard as we view this nexus of land and sea, granite and grove in the golden light of late afternoon. Everyone turns their best photographic skills to the challenge of creating meaningful visual memoirs as soft waves of the pastel sea gently lap against the shore. ...

Ten or fifteen minutes later, we've pulled off the road somewhere between Point Joe and Spanish Bay. An offshore fog bank moves slowly toward shore as the sun draws closer to the horizon, but right now, the sunlight reflecting off the ocean bathes our faces in the splendor of a perfectly beautiful day.

The afterglow of that moment still permeates Cindy's reflections of the trip a month after it ended.

"I can hear the water rumbling onto the reef," Cindy recalls. "Seagulls flying round and round; cobblestones reflecting sunset light. I can feel the power of the sea, although he is calm right

Continued next page



After three days of beautiful sunny weather for their trip to Yosemite, San Francisco, the Monterey Peninsula, and Big Sur, a group of international visitors to the Global Health Institute of Loma Linda University encountered foggy skies at Big Sur on the final day of the trip. Not to worry; this fabled section of the California Coast is gorgeous in any light.



On the final day of their four-day trip to Yosemite, San Francisco, the Monterey Peninsula, and Big Sur, a group of seven participants—six from China and one from Thailand—in mentorship programs offered through the Global Health Institute of Loma Linda University took time out to explore the redwood forest of Palo Colorado Canyon in Big Sur, where these redwood sorrels and trilliums grow beneath the canopies of the giant trees.

PSYCHIATRY FOR PUBLIC FIGURES

Psychiatrist lectures about caring for high profile patients

By James Ponder

Richard K. Harding, MD, professor of clinical psychiatry at the University of South Carolina, discussed the challenges of caring for the president of the United States and other high-profile patients with an appreciative crowd at the Behavioral Health Institute of Loma Linda University on May 23.

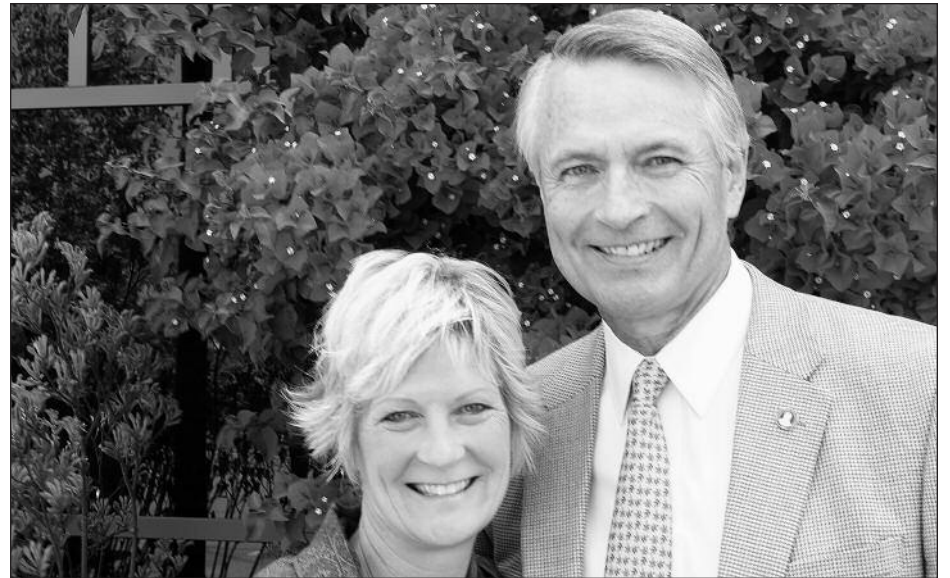
Dr. Harding, past president of the American Psychiatric Association and an alumnus of the LLU School of Medicine, tapped into his extensive research into presidential medicine as well as his experiences in serving as physician for former presidents Bill Clinton and George W. Bush during his remarks.

"Presidents are just like you and me," Dr. Harding said, describing the emotional lives of the nation's chief executive officers.

"The biggest challenge in caring for the president or other VIP," he asserted, "is maintaining the integrity of the doctor-patient relationship. That relationship is central to your work. It is the foundation of contemporary medical practice. The superiority of the physician in that relationship must not be compromised even when your patient is president of the United States."

Although Dr. Harding did not comment on his experiences working with former presidents Clinton or Bush, he generalized about some of the difficulties physicians encounter when working with high-profile patients, calling attention to tactics they may use to undermine the physician's authority in the relationship.

"VIPs try to flatten the playing field," he noted. "They try to impress you with their wealth, position, or ability to communicate. These are



Mary Ann Schaepper, MD, director of the general psychiatry residency at Loma Linda University School of Medicine, hugs her uncle, Richard K. Harding, MD, professor of clinical psychiatry at the University of South Carolina, moments before he addressed a crowd of health care professionals at the Behavioral Health Institute on May 23.

powerful people—alpha males or females—who are used to being in charge. They expect

solutions to problems now, and they're good at manipulating relationships. They may try to compromise the physician's medical judgment."

In terms of advising care providers how to manage relationships with high-profile patients, Dr. Harding issues a commonsense imperative.

"Don't let the VIP run the show!" he warned.

"How do smart doctors make stupid decisions?" he asked. "What happens when physicians give up their power to their patients?"

To answer the questions, Dr. Harding considered the careers of four physicians charged with providing care for presidents or celebrities:

- Conrad Murray, MD
- George C. Nichopolous, MD
- Max Jacobson, MD
- Cary T. Grayson Jr., MD

"Conrad Murray was paid \$150,000 a month to take care of Michael Jackson on tour. He was a good doctor; well-trained.

"But right now," he said, "Dr. Murray is facing
Please turn to page 10

MILESTONES

Ceremony dedicates graduating doctors of physical therapy



On June 7, the department of physical therapy acknowledged the accomplishment of its 2012 doctor of physical therapy graduating class with a dedication ceremony. The students in attendance each received a white jacket signifying their entry into the profession. The students vowed their commitment to provide the highest quality of physical therapy care by reciting the physical therapy professional oath.



As a group of seven international visitors to the Global Health Institute of Loma Linda University discovered during a recent trip, Bridalveil Fall at Yosemite National Park is a great place to get wet. Swirling mists create a cold and damp microclimate and drench hikers to the bridge at the base of the large waterfall, a portion of which is depicted here.

Continued from previous page

now. Accept and allow the calming energies of gentle waves on a beach shushing, shushing into my consciousness—timeless and relaxing. I cannot express in words, just want to say thank you for bringing us the most beautiful things."

In his recollections, Tony cites Carmel as the place he enjoyed the most. "On April 22nd, we drove to the small city," he writes. "It was sunshiny, and sometimes there were some clouds in the sky to keep me cool. As soon as I arrived there, I was shocked by the scenery; I enjoyed walking, running, wading at the beach. It is a good place for a romantic sunset picnic or a family beach fire in the evening. I could see many dogs that were having even more fun than their humans. I enjoyed the beach very much."

For Lucy, the most memorable part of the trip occurred the next day, shortly after we left the Big Sur country behind and stopped to admire a covert alliance of sea lions lazing on the sands of the Central Coast.

"When I got out of the van and ran toward

the beach," Lucy remembers, "I was surprised thoroughly by so many sea lions lying on the beach! Not only had I never seen this scene before, but also it looked like a harmonious picture. Under the sunshine, hundreds of sea lions gathered; the biggest of these as dads, the medium as moms, the smallest as babies. Some of them just relaxed, some of them moved slowly, some of them watched us with friendly eyes and batted their fins as if to say, 'Welcome' and 'Join us.' How amazing it was! Here is the sea lions' heaven!"

After mentioning the waterfalls of Yosemite, the Golden Gate Bridge, and the beautiful city and beach of Carmel, May selects her favorite destination from the trip—the beach near Spanish Bay.

"The sight I will never forget in my life is that beach stone with sunset," May exclaims. "MARVELOUS!! I couldn't use words to express my feelings. The moments we spent there were just like a dream. I would prefer to stay in such a dream all the rest of my life, to never get out! How beautiful and fabulous!"

POSSABILITIES

PossAbilities mentor honored as City of Rialto's 'Man of the Year'

By Darcie Moninka

Eric Arrington, a volunteer for the PossAbilities program at the Loma Linda University Medical Center East Campus, was named the City of Rialto's "Man of the Year" on June 29 at the annual awards luncheon in Pomona.

Senator Gloria Negrete McLeod of the 32nd Senate District awarded Mr. Arrington, along with 11 other honorees.

Mr. Arrington was acknowledged for his service as a 15-year football coach and as a longtime supporter of patients in the Poss-

Abilities program. This program serves the physical, social, and emotional needs of the disabled in this community.

Now confined to a wheelchair, Mr. Arrington lost the ability to use his legs when he was shot in the back six times while celebrating an offer to try out for the Los Angeles Raiders. Since the incident, Mr. Arrington has coached at Pop Warner, San Bernardino Valley College, and the University of Redlands' summer football camp.



After being shot in the back six times and losing the ability to walk, Eric Arrington lost his invitation to the Los Angeles Raiders, but he continues to use his talent as a football coach and mentor for the disabled at PossAbilities.

LLU begins new program in Haiti to improve rehab services for the disabled ...

Continued from page 6

"The answers they gave were brilliant; it almost made me cry," she says. "I thought, 'You've been in this program two days and you're already coming up with these brilliant, complex ideas?' They really saw the patient for who she was."

Dr. Thomas believes the students will be pioneers who move the rehabilitation professions forward in Haiti.

"One year from now, they're going to be incredible clinicians," she says. "I think we're going to see many of them wanting to push forward to get a bachelor's degree. They're going to start thinking about what's next."

Student Fortilus Cedieu is looking forward to changing his country.

"I am feeling so good and proud to be useful in my life," he says. "Helping people is very important."

Loma Linda University stepped up its involvement in Haiti immediately post quake and continues to play a critical role not only in recovery but in making the country even better than it was before.

The university's relationship with Haiti dates back to Hopital Adventiste's affiliation, beginning in 2001, with Adventist Health International—a nonprofit based at LLU that partners

On their second day of school, two of LLU's new Haitian students (on left) participate in a communication-building exercise with LLU students visiting from the home campus. →

with health care facilities in developing countries to improve services.

Since the earthquake, Loma Linda University has helped stabilize and upgrade the hospital, coordinated some 2,000 volunteers, and temporarily operated a refugee camp at the Adventist university.



Psychiatrist lectures about caring for high profile patients ...

Continued from page 9

four years in jail because he allowed the patient's celebrity personality to change the doctor-patient relationship."

In speaking of George C. Nichopolous, MD, Elvis Presley's physician, Dr. Harding suggested the desire to maintain the approval of a powerful celebrity may have led to mimicking and unmanageable emotional entanglements.

"There is a photo of Elvis with 'Dr. Nick,' as he called him," Dr. Harding reported. "It was taken in the backyard and Dr. Nick has his hair cut just like Elvis. He has his shirt off just like Elvis. During the last six months of Elvis' life, Dr. Nick prescribed more than 10,000 medication dosages for him. There were 14 different psychoactive substances in Elvis' body when he died."

If Drs. Murray and Nichopolous went too far in prescribing medications for their patients, they weren't the only ones.

"JFK had Addison's disease and chronic back pain," Dr. Harding notes. "He had almost no energy. Dr. Max Jacobson—the doctor to Truman Capote, Tennessee Williams, Eddie Fisher, and several of the president's Hollywood friends—was known as 'Dr. Feelgood.' He came to the White House and injected a mix of amphetamines, opiates, steroids, and soluble placental cells into JFK two or three times a week. We're lucky JFK didn't have a psychotic episode from the influence of all those drugs."

Dr. Harding suggested that sometimes physicians are susceptible to the allure of the possibility of receiving personal perks from their

association with powerful patients.

He cited Cary T. Grayson Jr., personal physician to former President Woodrow Wilson, as an extreme example. To strengthen the health of the 28th president, Dr. Grayson Jr. prescribed an enviable regimen for Mr. Wilson.

"He put President Wilson on a three-hour per day work schedule," Dr. Harding said. "The rest of the time, he played golf, went to the theater, and out to eat. As a result, the president's health began to turn around. He was doing pretty well until World War I broke out. Then the stress got to him. He had a stroke and lost his ability to govern."

Dr. Grayson Jr. then became the most powerful physician in American history. "He and his wife actually ran the country for 18 months after President Wilson had the stroke," Dr. Harding observed. He also noted that the 25th Amendment to the U.S. Constitution was later created to protect the nation should a president become disabled or otherwise unable to govern.

Dr. Harding was careful to emphasize that none of the information he shares in his lectures is confidential, but is all a matter of public record.

After suggesting that physicians who aren't sure how to handle powerful patients should consult their peers, Dr. Harding concluded by reminding caregivers to stay in charge.

"Doctors must stay in the superior position with each patient," he emphasized, "even when it's the president of the United States."

A joyful welcome for Baby Chase ...

Continued from page 12

guided by Loma Linda's mission to provide care to the whole person."

Drs. Oshiro, Lum, and Yuan were part of a team of nearly 20 physicians and residents who worked together to make recommendations about the best course of treatment for Heather and her unborn baby.

"Heather had a sentinel node biopsy," says Dr. Lum, "which showed one of two lymph nodes with cancer."

At three months pregnant, Heather underwent a mastectomy, and six weeks later she began chemotherapy to destroy rapidly growing cancer cells (chemotherapy is considered safe for babies during the second trimester of pregnancy).

About eight months after her initial cancer diagnosis, Heather had a second elective mastectomy, followed by hormone treatment. She also agreed to genetic testing and rejoiced with her doctors when the results showed that she was not genetically predisposed to breast cancer.

Just before the holidays, Heather's doctors placed her on bed rest. "Christmas had passed," she remembers, "and the kids were excited—all week they had looked forward to using their Target gift cards to buy presents. The day their dad was going to take them shopping, I went into labor."

Heather didn't want to disappoint her family, so she waited until they returned home to ask her husband to drive her to the hospital.

"During the delivery, everything went well," recalls Dr. Oshiro. "Born four weeks before his due date, Chase was a vigorous, seven-pound baby."

Heather is quick to speak about how safe the LLUCC doctors made her feel. "Throughout my experience with cancer, Dr. Lum represented hope to me," she says. "She helped me to see light at the end of the tunnel."

Heather's family provided a strong incentive for her to follow her doctors' advice. She was motivated to get up every day and continue with her treatments so she could be there for her husband and children.

"After completion of her treatment," Dr. Lum reports, "Heather returned for axillary clearance and had an additional 10 lymph nodes removed with no cancer about one year later."

Heather's doctors agree: "Heather is a beautiful individual who remained positive throughout her pregnancy and treatment."

"Heather is one of many patients with complex medical issues who are receiving good outcomes at LLUCC," says Judy Chatigny, MSN, executive director. "The San Manuel Band of Mission Indians' \$3 million gift has enabled Loma Linda University Medical Center to move forward with plans to create a fully integrated and comprehensive cancer program in one physical space, benefiting countless patients who rely on the center for care. We are grateful for this transformative gift in support of LLUCC, a vital resource in this region."

PHILANTHROPY

Walter's Children's Charity Classic raises \$175,000 for LLU Children's Hospital



Walter's Children's Charity Classic, an organization that raises funds to benefit Loma Linda University Children's Hospital through an annual golf tournament and sponsorship program, recently donated a check in the amount of \$175,000 and a collection of child-sized luxury cars to the hospital. "The Walter's team is truly an inspiration to us all," noted Zareh Sarrafian, MBA, administrator. "We tremendously appreciate all their generosity and hard work on behalf of our patients. Loma Linda University Children's Hospital is blessed to have their continued support and partnership." Pictured above are (back row, from left): Joan Morris, MD, physician; Tiffany Hoekstra, Loma Linda University Children's Hospital Foundation; Pete King, Caliber Collision; Cathy and Steve Kienle, founders, Walter's Children's Charity Classic; Kevin Mackey, Stater Bros.; (middle) Claudia Chavarria, mother of (front row, from left) Natalie Chavarria, patient, and her brother Nicholas.

Gift to LLU Cancer Center honors memory of vintage car enthusiast



In honor of the late Garry Jennings, former co-chair of the Drifters Car Club of Southern California, Anthony Ganci (left) and Steve Doane (second from right) recently presented a check in the amount of \$700 to the Cancer Center at Loma Linda University Medical Center. Judy Chatigny, MSN, executive director of the Cancer Center, and Randy Possinger, assistant vice president for philanthropy, accepted the generous contribution, which was collected from members of the club. According to Mr. Ganci, who served as co-chair of the club with Garry Jennings in 2010 and 2011, Mr. Jennings was born in Portland, Oregon, and raised in Pasadena, California, where he played golf in high school and college. He married his wife Renee in Monterey, California, in 1992, and retired in Menifee, California, in 2009. He passed away from stomach cancer in August 2011. His prized automobile was a bright red 1966 Chevy Nova, which he proudly displayed at many Drifters events. Mr. Ganci described him as "the nicest guy in the world." "Garry loved to go to car shows as often as he could," Anthony Ganci remembers. "We spent a lot of quality time together visiting as many car events as possible. He was my best friend and he will be missed."

CAMPUS CHANGES

Campus Store now managed by Barnes & Noble

By Larry Kidder

The Loma Linda University Campus Store is under new management. Barnes & Noble has taken over responsibility for the bookstore. The change will bring a number of benefits to students on campus, according to the Barnes & Noble College website.

"The Campus Store looks pretty much the way it did before," explains Melodi Hamilton, store

manager, "but Barnes & Noble plans to do a major remodel this fall." With the addition of LLU, Barnes & Noble now partners with 33 educational institutions of higher learning within California. Some specific new benefits for LLU students include:

- **In-store and online textbook rentals.** Students will now have the option to rent textbooks either online or in the bookstore. Those opting for textbook rentals can save

- more than 50 percent over the cost of a new printed book and are able to pay for rental fees using cash, credit, or student financial aid.
- **Rapidly expanding selection of e-textbooks.** In addition to offering savings of up to 60 percent over new printed books, Barnes & Noble's free Nook Study application serves up e-textbooks in an engaging format that enhances the overall learning experience.
- **Generous cash-for-books program.** Students owning books that faculty plan to reuse in future courses will be eligible for a 50

- percent cash payout, up to needed inventories.
- **Registration integration.** A user-friendly registration integration system allows students to reserve and order textbooks immediately after they register for courses—all entirely online, automatically populating carts with the right books for the right class and making the purchasing process more convenient than ever.

To visit the Barnes & Noble Campus Store website, go to <llu.bncollege.com>.

Reportable Crimes

The Crime Awareness and Campus Security Act of 1990 requires Loma Linda University to publish interim reports on campus crime activities. Listed below are the crimes reported for the months of May and June, 2012.

Type of Crime	Number of Crimes	Location of Crime
Assaults	2	BMC; Lot O
Vehicle Burglary	4	Lot DC; Centennial Complex; Drayson Center (2)
Grand Theft Auto	3	Lot A; Daniells Hall; Parking Structure
Threats	3	LLUMC Emergency Department; Outpatient Dialysis; LLUMC Patient Relations
Drunk in Public	1	LLUMC
Trespassing	1	Lower Lot T
Weapons Violation	1	BMC

You can assist the Department of Security in maintaining a safe and secure environment by notifying Security immediately at Ext. 911 if you see or know about a crime taking place.



Loma Linda University Medical Center recently played host to two delegations of international visitors. In the photo above, the first four guests from the left are visiting dentists from Sir Run Run Shaw Hospital in Hangzhou, China. The next eight visitors are government and health care officials from the Republic of Turkey on a tour of Southern California health care facilities, and the final four are representatives of Loma Linda University Medical Center. The weather could not have been better, offering up postcard conditions on Wednesday, July 11.

CONSERVATION SCIENCE

LLU professor plays key role in new Bahamian iguana conservation facility

By Larry Kidder

William K. Hayes, PhD, professor of earth and biological sciences at Loma Linda University, was asked to play a key role in establishing the San Salvador Iguana Conservation Centre in the Bahamas.

The new center is based at the Gerace Research Centre on the Bahamian island of San Salvador. Its primary purposes are to raise awareness of the highly endangered rock iguana—with an estimated population of about 500—and assist the wild population of iguanas through a breed-and-release program.

Dr. Hayes, who is also director of the LLU Center for Biodiversity, has been working with the endangered rock iguana in the Bahamas since 1993, making a number of trips to San Salvador through the years.

“I’ve been studying the endangered Bahamian rock iguana, *Cyclura rileyi*, in collaboration with Ron Carter,” says Dr. Hayes. “There are eight additional rock iguana species in the Caribbean, all of which are highly endangered and protected by international law.”

Dr. Hayes continues, “Three of these species occur in the Bahamas, where they are also protected by Bahamian law.”

Ron Carter, PhD, provost of Loma Linda University, has worked closely with Dr. Hayes since 1993. Their research has centered on observing the behaviors of the rock iguanas, as well as the environmental issues that threaten them.

“The demise of these lizards, the largest native terrestrial herbivores on the islands where they occur, can be attributed entirely to activities of man,” Dr. Hayes points out. “They are vulnerable especially to habitat destruction, as well as the introduction of feral predators and competitors.”

The San Salvador Iguana Conservation Centre is being created through a collaboration of the organizations San Salvador Living Jewels, the Bahamas National Trust, and the Gerace Research Centre, with funding from California-based Seacology and FIBC First-Caribbean Bank.

Dr. Hayes served as a consultant for the center’s

facility and protocol development, as well as helping to find funds to support the project.

“On my recent trip to San Salvador, I found very few juvenile rock iguanas,” Dr. Hayes

observes. “I hope the new center can impact their numbers and help to reverse their decline.” He adds, “The entire disappearance of a species is permanent and represents a major failure on our part to protect our fellow creatures.”



Denny Moore (left), from the Bahamas National Trust, and Tom Crutchfield (right), a reptile breeder from Homestead, Florida, look in on a Bahamian rock iguana as it suns itself in the new protected breeding area at the San Salvador Iguana Conservation Centre, located on the grounds of the Gerace Research Centre on the island of San Salvador, Bahamas. The new enclosure at the San Salvador Iguana Conservation Centre will provide a protected area for rock iguana females to safely lay and care for their eggs. The major problems these mothers face are collapse of the tunnels and egg chambers (often carelessly stepped on) and robbery of the eggs or young iguanas by rats or other predators.

IMPACT OF PHILANTHROPY

A joyful welcome for Baby Chase

Contributed report

A \$3 million gift helps Loma Linda University Medical Center physicians and researchers transform cancer treatment.

According to Mark Reeves, MD, PhD, director, Loma Linda University Cancer Center (LLUCC), “LLUCC is an important resource for our region. Designed to provide care for patients with complex medical needs, the Center has recently benefited from a transformational gift made by The San Manuel Band of Mission Indians.”

For Dr. Reeves, the impact of San Manuel’s \$3 million gift cannot be overstated. “The funding supports the development of personal, targeted cancer therapies in the San Manuel Band of

Mission Indians Biospecimen Laboratory,” he says, “and the translation of these therapies into patient care in the Oncology Center.”

While the funding impacts how the center is designed, it also enables researchers to participate in studies that contribute to the standard of care for patients with cancer and the transformation of patients’ lives. One such person is Heather Scriven, a young mother who resides in the Inland Empire.

Life had become challenging for Heather and her family. When the recession brought changes in her husband’s employment, the young mother of three began working long hours to help meet the family’s expenses.

As Heather immersed herself in work, the weeks flew by. And then came a surprise:

though Heather and her husband had been told she could not have another child, she discovered she was pregnant.

Heather had always taken good care of her health, and even though her life was becoming increasingly complex, she continued to follow advice given in news reports, public service announcements, and during annual physicals—she performed monthly breast self exams. Heather was in her second trimester of pregnancy when she discovered a small lump

in her breast. Within five weeks, the tumor had grown from 1.3 centimeters to more than 5 centimeters.

Heather’s doctors at LLUCC included Bryan Oshiro, who specializes in high-risk pregnancy; Sharon Lum, breast surgeon; and Yuan Yuan, a hematologist/oncologist.

“The care we provided to Heather, and that we offer to every patient,” says Dr. Oshiro, “is

Please turn to page 10



The Scrivens are pictured above (from left): Chandler, Heather (holding baby Chase), Darrell, Haley, and Hannah.



Volume 25, No. 9 | Friday, July 27, 2012

Editor Dustin R. Jones, MA
djones@llu.edu

Managing editor/layout Larry Kidder, MA
lkidder@llu.edu

CORRESPONDENTS

Doug Hackleman, MA
dhackleman@llu.edu

Stephen Vodhanel, PhD
svodhanel@llu.edu

James Ponder
jponder@llu.edu

Nancy Yuen, MPW
nyuen@llu.edu

Heather Reifsnyder, MA
hreifsnyder@llu.edu

Have a story that’s noteworthy? Send it to news@llu.edu

TODAY is a nonprofit news publication of Loma Linda University, operated under the auspices of the General Conference of Seventh-day Adventists.

Internal campus-based advertising accepted for publication in TODAY is intended to be a service to the students, staff, employees, and faculty of all Loma Linda University entities. No outside advertising is included in this publication. The management, at its sole discretion, reserves the right to refuse, without explanation, any advertisement. The acceptance of advertising in this publication does not represent an endorsement or guarantee of any kind by Loma Linda University, Loma Linda University Medical Center, or Loma Linda University Adventist Health Sciences Center.

Questions about content, campus-related advertising, and circulation should be directed to TODAY, Burden Hall, Loma Linda University, Loma Linda, California 92350. Phone (909) 558-7000. © 2012. All rights reserved.

www.llu.edu | www.facebook.com/lomalindauniversity