



Scope

Loma Linda University Publications

3-20-1968

Scope - Volume 05, Number 04

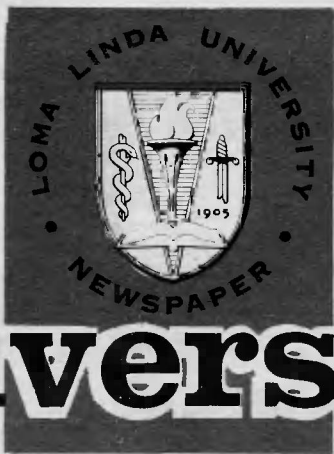
Loma Linda University

Follow this and additional works at: <https://scholarsrepository.llu.edu/scope>

Recommended Citation

Loma Linda University, "Scope - Volume 05, Number 04" (1968). *Scope*.
<https://scholarsrepository.llu.edu/scope/149>

This Newsletter is brought to you for free and open access by the Loma Linda University Publications at TheScholarsRepository@LLU: Digital Archive of Research, Scholarship & Creative Works. It has been accepted for inclusion in Scope by an authorized administrator of TheScholarsRepository@LLU: Digital Archive of Research, Scholarship & Creative Works. For more information, please contact scholarsrepository@llu.edu.



University SCOPE

Vol. 5, No. 4 Wednesday, March 20, 1968

University Campus Fellowship plans mission emphasis week

Loma Linda University students will focus their attention on world missions during the week of May 6-11 to emphasize the University's commitment to world service.

The Week of Missions Emphasis, inaugurated two years ago by the University Campus Fellowship, is being coordinated by Carol J. Jesse, SM'68, and other members of the University Campus Fellowship committee.

Included in the week's schedule are daily noon-hour meetings in the University Church Fellowship Hall and evening meetings in the Campus Chapel. Meals will be served at the noon meetings for a nominal charge.

Speakers for the week will deal with problems that a prospective missionary may encounter in foreign service, such as cultural, political, and sociological differences.

Concluding the Week of Missions Emphasis will be a weekend retreat at Pine Springs Ranch. All Loma Linda cam-

pus students are invited to attend the mountain retreat. Student missionaries from Pacific Union College, Angwin, and the University's La Sierra campus will also be in attendance.

Alumni association board of directors elected for 1968-69

New board of directors has been announced for the School of Dentistry Alumni Association for the year 1968-69, according to Alden B. Chase, DDS, assistant professor of orthodontics and incoming president of the Alumni Association.

Included among the board of directors are Leif K. Bakland, '63; Archie D. Buchanan, '61; John A. Butler, '59; Lee F. Crane, '62; Raleigh R. Cummings, '66; Vernon S. Eddlemon, '60.

J. Burton Everett, '59; George P. Foust, '64; M. Eugene Lysinger, '62; Ted W. McDow, '65;

Continued on page 5

Annual nutrition homecoming scheduled for April 5-7

Richard C. Nies, PhD, a clinical psychologist from Glendale, will be one of the speakers at the nutrition and dietetics alumni association homecoming scheduled for the weekend of April 5-7.

Dr. Nies, who received his PhD in experimental psychology from the University of California at Los Angeles, will speak on "Our Emotional Hang-up."

Other scheduled events include lectures by Roslyn B. Alfin-Slater, PhD, associate professor of nutrition at UCLA, and Rose Budd, '63, director of dietary service at Glendale Adventist Hospital in Glendale. Mervyn G. Hardinge, MD, PhD, dean of the School of Public

Health, will present a progress report on the school.

Also featured will be U. D. Register, PhD, professor of nutrition, who will tell of his recent travels to Afghanistan. He will also present a report on the progress and future of the department of nutrition.

C. Joan Coggin, MD, assistant professor of medicine, will speak on the recent Loma Linda University heart team's trip to Greece at the banquet Sunday, April 7. The class of 1943 will be honored at the banquet.

Further information about the weekend may be obtained by writing the Alumni Relations Office, Loma Linda University, Loma Linda, California 92354.

Compete in Florida

Table clinic winners announced

Winners of the student table clinic competition at the eighth annual Loma Linda University School of Dentistry Alumni - Student Convention were announced March 7 at an Awards Banquet held on the La Sierra campus of the University. The winners among 14 competing scientific exhibits, each a clinical or research principle developed by the designers, were James W. Petrick, Jr., and Peter M. Couperus, both junior dental students. The subject of their exhibit is "Radioisotope Display of Salivary Gland Parenchyma."

First place

Taking first place among the dental hygiene students were Marjorie E. Hablutzel, Linda J. Hare, Jane A. Way, and Yvette P. Dawes, juniors, for "How Much Washing Does a Mouthwash Wash?"

Mr. Petrick and Mr. Couperus and their first-place exhibit will represent Loma Linda Uni-

versity in the national table clinic competition at the October meeting of the American Dental Association in Miami, Florida. Loma Linda students have taken the first place award for the past three years and have placed among the top three for the last six years in the national competition.

Other winners

Other winners of the table clinics included James A. Dierlinger and James D. Ellenberger, sophomore dental students, for their exhibit "DNA Synthesis in Herpes Simplex Virus," second place; and senior student, Gary G. Gregory, for "Axi-pan," third place.

Placing second among competing dental hygiene students were Betty L. Zendner and Marilyn C. Redfern, seniors, for "Root Planing — Do or Don't?"

Alumni and students attending the banquet heard Fred W. Andrews, DP, of Redlands speak on "This Thing Called

Medical alumni conclave will open March 29

Over 2,000 physicians, medical students, and others from across the nation are expected to attend the postgraduate convention of California's largest medical group March 29 to April 4.

The 36th annual Alumni Postgraduate Convention, sponsored by the Alumni As-

sociation and the faculty of Loma Linda University School of Medicine, will be held in the Biltmore Hotel, Los Angeles, and on the Loma Linda campus of the University.

Refresher courses scheduled to begin Sunday morning, March 31, will be held on the Loma Linda campus in the Graduate School building, hospital amphitheaters, and in the ophthalmology department in the hospital.

Convention highlights

A highlight of the convention will be the annual alumni homecoming, held for the first time on a unified campus. Scheduled for 2 p.m. in the Dale Gentry Gymnasium, the program will include discus-

sions of the curriculums, clinical teaching materials, research in progress, and proposals for the immediate future.

Special guided tours of University Hospital will be conducted during the day for alumni and their families.

The convention will open with religious services Friday night and Saturday, followed by the refresher courses on Sunday and Monday.

The scientific assembly scheduled for the Biltmore Hotel, Los Angeles, April 2-4, will feature the latest reports on medical progress by national authorities in combination with discussions, clinical films, and closed-circuit television demonstrations of medical and surgical problems and techniques.

Speakers

Included among the speakers are Carroll L. Witten, MD, instructor of medicine, University of Louisville, Louisville, Kentucky; Marshall J. Orloff, MD, professor and chairman of the department of surgery, University of California at San Diego; Peter H. Forsham, MD, professor of medicine, University of California School of Medicine at San Francisco.

C. Henry Kempe, MD, professor and chairman of the department of pediatrics, University of Colorado, Boulder; Robert V. Shearer, MD, professor and chairman of the ophthalmology section, department of surgery at Loma Linda University.

Robert E. Litman, MD, professor of psychiatry, University of Southern California, Los Angeles; and Helen F. Gofman,

MD, director of the child study unit, University of California San Francisco medical center.

Additional feature

An additional feature of the convention will be the institution of the first annual Percy T. Magan lectureship. The lectureship, "The Pathology and Treatment of Edema," will be presented by Donald W. Seldin, MD, professor and chairman of the department of internal medicine, University of Texas Southwestern Medical School, Dallas.

The annual convention banquet is set for April 3 at the Biltmore Hotel. Guest speaker will be Jerry L. Pettis, United States Congressman for the 33rd congressional district.

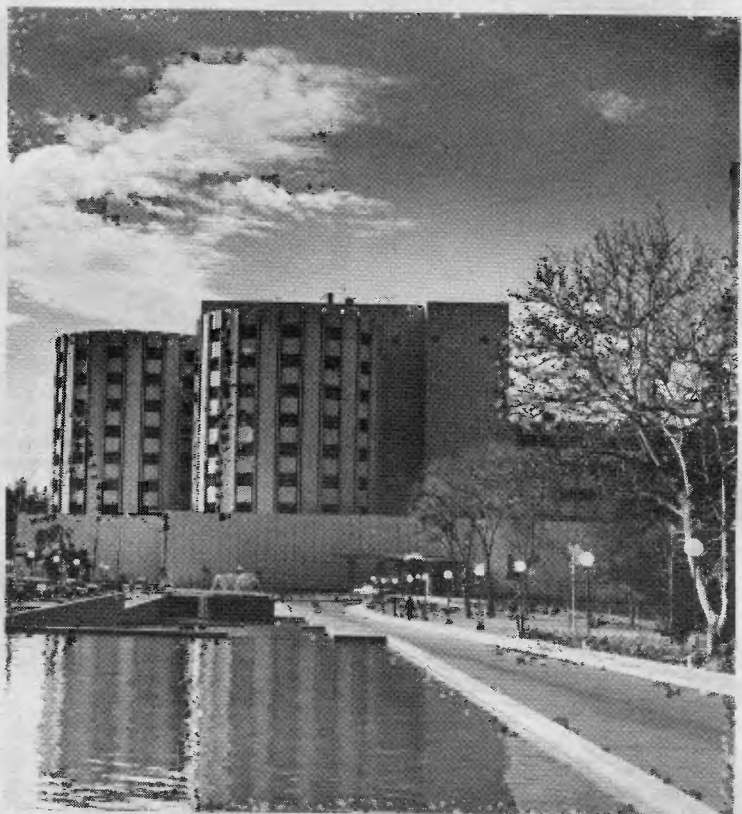
Big job on Xerox? Make appointment

Candidates for degrees who wish to Xerox copies of their thesis must make an appointment for the use of the Xerox machine, according to Elva D. Owens, library bibliographer and Xerox key operator.

Appointments, which must be made at least two days prior to using the copier, can be arranged with Mrs. Owens or Betty S. Davis at the library.

A charge of seven cents per page is made for the use of the machine. This includes special durable paper supplied by the library. Use of the Xerox is on a cash basis only.

Further information may be obtained at the library circulation desk.



—Photo by Robert A. Kreuzinger

DEDICATORY SERVICES for University Hospital will be held Sunday, March 31. Ralph F. Waddell, SM'36, secretary of the medical department of the General Conference of Seventh-day Adventists will be the principal speaker.

Guest editorial

The high cost of learning

By Robert L. Cone

Vice president for financial affairs

The cost of education and the survival of private colleges and universities has now become of national concern. More than anything else, perhaps, the explosive rise during the post-war years in the total cost of the nation's educational activities has driven home the realization that education, whatever else it may be, is unmistakably big business.

Collective public and non-public outlays on formal education were running about \$50 billion a year in 1966—a figure which includes expenditures for elementary and secondary and higher education. At this rate education absorbs a larger share of national product than any other single activity except national defense.

For the year 1966 the cost of higher education alone has been estimated to be about \$12.4 billion and it is estimated that by 1975 the cost of higher education could be as high as \$30 billion per year. It is the feeling that at least one-half of this amount will have to come from government sources if higher education is to survive on an adequate level.

It is a well accepted fact that it is not possible for the student to pay the whole cost of his education in any phase of a college or university training. This is particularly true in the areas of professional and graduate education.

Loma Linda University is no exception; and the Seventh-day Adventist church subsidizes the University heavily to help with the education of its students. In a recent study of the education costs in the professional schools of the University the following information was reflected as to the amount subsidized by the church toward each student's education for the school year ending June 30, 1967.

School of Medicine	\$4,620.00
School of Dentistry	1,106.00
Graduate School	6,847.00
School of Nursing	843.00
School of Health Related Professions	1,939.00
Dietetics Interns	2,357.00

Statistics were not available for the College of Arts and Sciences, but the estimated amount of church appropriation for this college area is \$200 per student per year.

Letters

To the Editor

Expresses alarm

Dear Editor:

Many good people are becoming alarmed and distressed over the published letters, mimeographed sheets, and magazines that attack our denominational leaders, our policies, and our ideals.

I, too, regret these criticisms that divide rather than draw us together, but I am comforted by this priceless proverb that my very wise mother taught to us children; "The little dog barked and barked at the moon, but the moon shone on just the same."

Doris Haussler
Riverside, California

Confirms beliefs

Dear Editor:

Is it really true that certain Adventists would like us to question the reality of the creation story? I am referring to the editorial in the Los Angeles Times by John Dart, (January 17, 1968) which just reached me out here.

Do they question the story of the giving of the Ten Commandments at Sinai? Does the fourth commandment contain misinformation? ("For in six days the Lord made heaven and earth, the sea, and all that in them is.") Paul says that Christ was the One leading in the wilderness (I Cor. 10:4).

John says He was at the creation (John 1:1-3). Paul says Christ by His righteousness makes many righteous, where Adam by his sin had made many sinners (Romans 5:12-19). Are all these questionable?

Are Paul, John, Peter, and the other Bible writers composing one huge work of fiction? Where do we draw the line?

Was Jesus saying "from the

beginning of the creation God made them male and female" from firsthand knowledge? Did He who alone was at the creation and then walked earth and talked to men agree with the record? Then why do those who claim to believe in Him question the record?

What value would there be in keeping the seventh day as a memorial of creation if the record is not true?

Before reforming the Adventist church, someone needs to decide for himself whether he believes in Christ and the Bible.

Grace S. Thorp, SM'59
Kingston, Jamaica

Landscaping

Dear Editor:

Recently I climbed the embankment on the north side of the Southern Pacific railroad tracks to get a view of the University from the new overpass.

To my left was "the hill" with its beautiful landscaping. On the right was the new hospital complex and the geodesic dome of the new Gentry Gymnasium.

Then like a strutting peacock who has been admiring his feathers and then feels ashamed when he looks at his homely feet, I looked down.

What a mess of old patched-up, out-moded, beat-up, corrugated-roofed buildings housing the purchasing stores, maintenance shops, and grounds service yard.

Something should be done to clean up this eyesore.

Name withheld

Expresses interest

Dear Editor:

I have followed with some degree of delight and interest the letter that followed the dis-

Continued on page 5

Adventist author schedules workshop

Seventh-day Adventist professional writer and lecturer George W. Target is scheduled to speak at a writing workshop Sunday, March 31.

The two workshop sessions, scheduled for 10 a.m. and 2 p.m., are sponsored by the Christian Writers Association.

Topics to be discussed include "Magazine and Feature Article Writing" and "Religious Book Writing."

Mr. Target has written nine fictional works, 20 television plays, eight radio plays, and many feature and documentary programs. He has also taught English literature at Colorado State University and has worked with the London Publishing House.

Admission to each lecture is \$1. Both lectures will be held in room 2-B of the Graduate School.

Canadian reunion slated for April 4

The annual reunion of the "Friends of Canada Club" will be held Thursday, April 4, at Clifton's Cafeteria in West Covina.

All Canadians, former workers, or friends of Canada are invited.

Dinner will be served cafeteria style for the group from 7:30 to 8:10 p.m.

Listen magazine enters cartoon buying market

Listen magazine is interested in purchasing cartoons in the subject areas of alcohol, tobacco, drugs, or inspirational phases of better living, according to Francis A. Soper, editor of the magazine.

Cartoons submitted should be drawn in ink and must be original in both drawing and caption. A rough sketch and query may be submitted first.

Queries or cartoons should be sent to Listen, 6840 Eastern Avenue, N.W., Washington D.C. 20012.

School of Medicine auxiliary will sponsor benefit program

The Woman's Auxiliary to the Loma Linda University School of Medicine Alumni Association will present "Do Unto Others" benefit program Saturday, March 30, at 7:30 p.m. in Gentry Gymnasium.

"Oh Nurse, Poor Nurse, the Patient's No Better and the Doctor's Feeling Worse" will be one of three skits presented under the direction of Mrs. James A. Frahm.

Other features will include the Loma Linda Chorale under the direction of John T. Hamilton, director of public relations on the La Sierra campus, and soprano soloist Mrs. Mary-Esther Lindsay.

Ellsworth E. Wareham, MD,

professor of surgery, will be the master of ceremonies.

Proceeds from the presentation and all "Do Unto Others" productions are used to help families left by deceased alumni members, according to Mrs. Bruce Branson, chairman.

Admission to the benefit is \$1.50. Tickets may be ordered through the Alumni Association Office in Loma Linda or at the Auxiliary Office, 1832 Michigan Avenue, Los Angeles 90033. They will also be available at the door.

Junior Medical Auxiliary members will host a taco feed at 6:30 p.m. in the gymnasium prior to the benefit program.



—Staff photo

"OH, NURSE, poor nurse, the patient's no better and the doctor's feeling worse." Neil H. Coeur-Barron, SM'58, and Barbara N. Wareham rehearse for the March 30 DUO program.

Book Talk

Letters to an American Lady

Edited by Clyde S. Kilby

(William B. Eerdmans Publishing Company, 1967)

Reviewed by Janet Jacobs

Department of psychiatry

From the year he was 51 until he was 64, C. S. Lewis wrote 137 letters to an American woman whom he never met, who prefers to withhold her identity, but who has made these letters available for publication by Wheaton College, thus providing a thirteen-year-long glimpse of the human side of a scholar, professor of Medieval and Renaissance English at Cambridge, and author of twenty books. Four of his books were scholarly and literary criticisms; but most of the other sixteen were familiar religious volumes written as a result of his conversion to Christianity at the age of 29: The Screwtape Letters, The Problem of Pain, Miracles, etc.

Magnify personality

The short letters in this new volume, Letters to An American Lady, change nothing of the character of the man, but rather magnify the personality of a great Christian scholar and an exceedingly human person. For one who claimed that the "one essential of the happy life is that a man would have almost no mail and never dread the postman's knock," these letters plus numerous others which he wrote to other regular correspondents must have been truly sent in response to a great sense of Christian duty. Else why would he have written ten letters in a morning during those "empty, silent, dewy, cobwebby hours" before the family was astir when the pen had become to him "what the oar is to a galley slave?"

The lady recipient of the somewhat unlitary letters in this volume (no paragraphing in many of the longer ones, little description, little point of reference, much haste) is said to be a widow four years older

than Lewis, "a charming, gracious, southern aristocratic lady," who was also a writer of book reviews, articles, and poems. In fact, it was these which seem to have provided the initial springboard for the correspondence. The two encouraged each other, both seeming to be full of infirmities of the flesh, she with her operations, sinus trouble, and dental repairs, he with his rheumatism, osteoporosis, and anemia. Worse, she had serious family problems, and although once financially independent, suffered loss and even privation. Thus she was ever in his prayers day and night and received assurance of this; but though at first because of English law he could not send her money when she most needed it, eventually he was able to arrange a lifetime stipend for her through his American publishers.

Word of caution

About one third of the way along in their correspondence Lewis cautioned Mary: "You have, you know, recently stepped up the pace of the correspondence. I can't play at that tempo!" By this time he was writing to her sometimes twice or three times a month. Then would come long pauses while he was vacationing in Donegal, Ireland, or changing university assignments, or caring for a sick brother with whom he lived and who was his secretary. Once he wrote: "I'm sorry my letters are so short compared with yours, but I'm afraid this is an irremovable difference between the sexes — women love letter writing and men loathe it."

When finally in January 1957, after having been a bachelor for 56 years, Lewis married Joy Davidman, he wrote to Mary the following year: "You are one of the minority of my numerous female correspondents who didn't gradually fade

Continued on page 7



University SCOPE

THE LOMA LINDA UNIVERSITY NEWSPAPER

Published by Loma Linda University, an educational institution operated by the General Conference of Seventh-day Adventists, as a non-profit organ.

Circulation: 20,000.

Frequency of publication: Published monthly with additional special issues as needed.

Offices are located in the University library building.

Regular subscription rate: \$3.00 per year.

EDITOR:

Richard W. Weismeyer

Editorial Assistant:

Contributing Editors:

Alice E. Gregg
Irene Schmidt

Alumni News Editors:

Catherine N. Graf, Nursing;
Stella C. Peterson, Physical Therapy; Hugh C. Love, DDS, Dentistry; Jennie Stagg Hudson, Nutrition and Dietetics

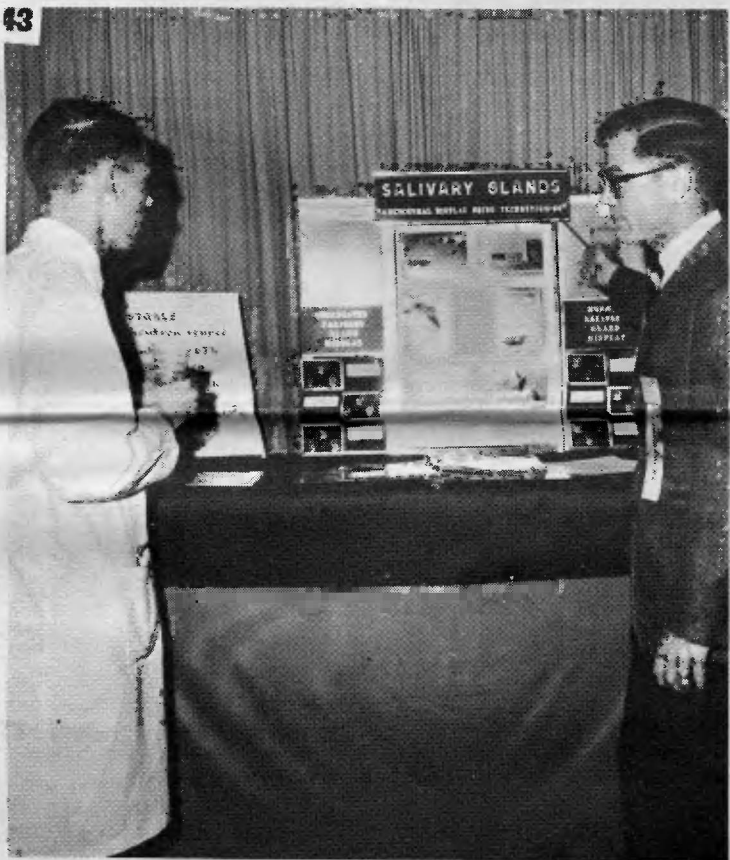
The University SCOPE accepts advertising that meets the standards of church-affiliated higher education. All advertising will be subject to acceptance by the University SCOPE Advertising Committee. All copy should be submitted the Friday before the issue date. Rate cards are available upon request. Direct communication concerning news, advertising, and subscriptions to Editorial Office, University SCOPE, Loma Linda University, Loma Linda, California 92354. Call 796-7311, extension 2373, (Area code 714.)

Alumni-Student Convention



—Photo by Robert A. Kreuzinger

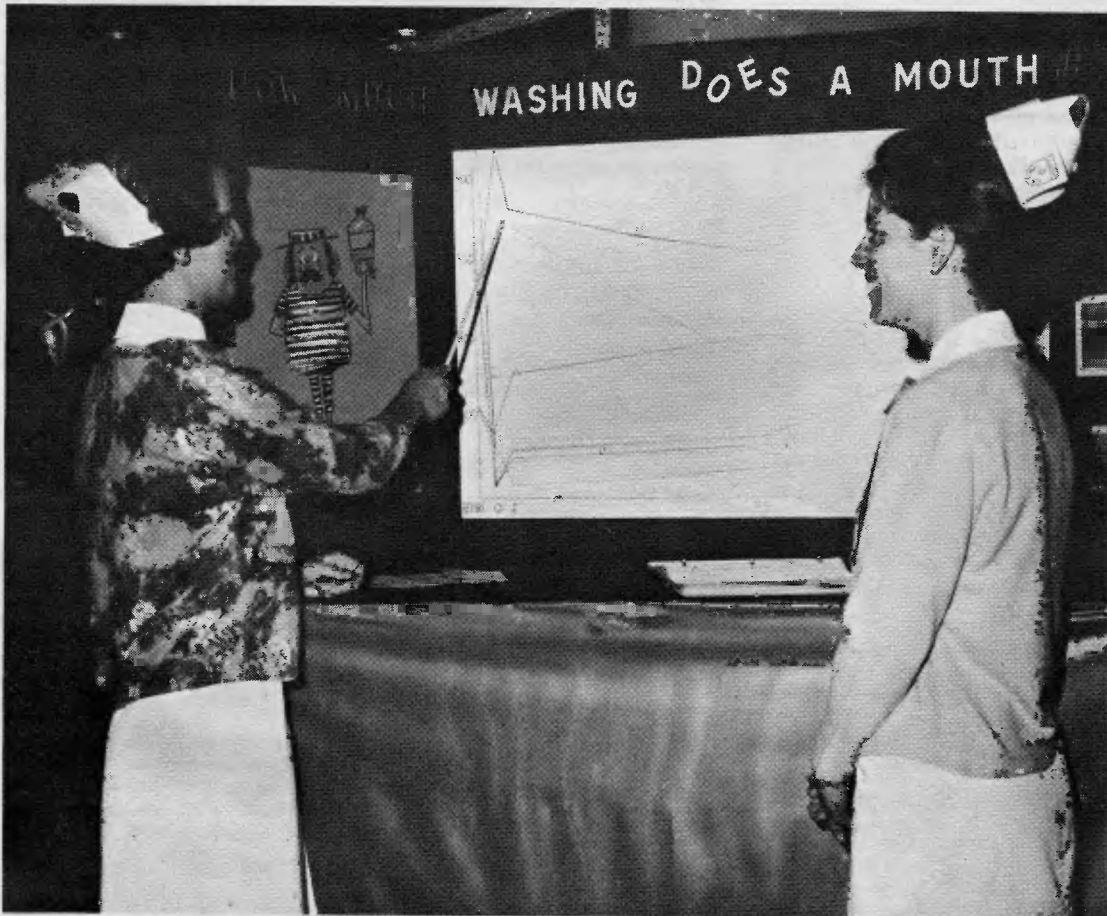
GENTRY GYMNASIUM saw its first use during the School of Dentistry Alumni-Student Convention March 7-9. The new, 30,000-square-foot structure, readied only hours before the convention opening, was the site of table clinic presentations and more than 60 exhibits by dental supply firms and others.



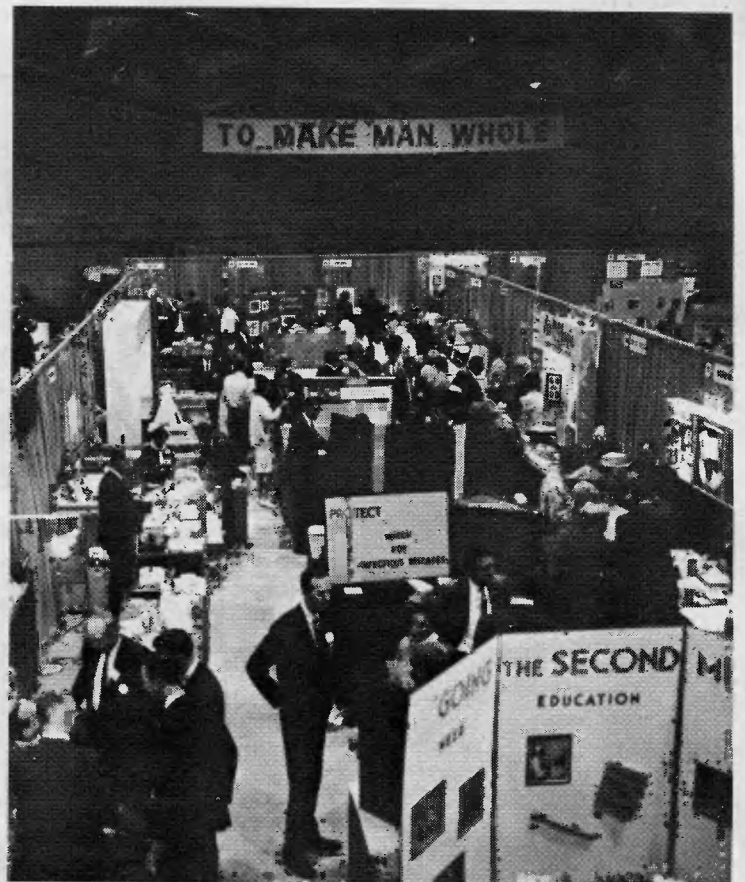
ROBERT R. WRESCH, SM'69, (left) hears an explanation of the first-place table clinic, "Radioisotope Display of Salivary Gland Parenchyma," from one of its designers, Peter M. Couperus, SD,69.



NORMA D. LAPOINTE and **Bonnie E. Dennison** welcome visiting alumnus **Lee F. Crane, SD'62,** at the convention registration desk.



"**HOW MUCH WASHING** Does a Mouthwash Wash?" the prize-winning dental hygienist exhibit is explained by senior dental hygiene students **Marjorie E. Hablutzel,** and **Linda J. Hare.**



THE FLOOR OF GENTRY Gymnasium seems crowded despite its large size as conventioners inspect the displays of table clinic competitors and commercial exhibitors beneath the prominent University motto.

University Placement

Direct inquiries to University Placement Service
Loma Linda University, Loma Linda, Calif. 92354

BOOKKEEPER

California

LOS ANGELES: Opening for full time bookkeeper in office of private physician

DENTAL HYGIENIST

California

BAKERSFIELD: Urgent need for dental hygienist by a number of SDA dentists. Now

DENTISTS, GENERAL PRACTICE

California

ATASCADERO: Practice and equipment for sale on the central California coast. Well established active general practice. Three operators, 100 sq. ft. plus reception room. Church and elementary school. Four day week, high gross practice. Leaving for graduate work

CERES: Dental office for rent. Many patients waiting for care. Rural community near Modesto. Elementary school and academy one-half mile from office. Water and mountain sports areas nearby, and a growing church that needs you

FORT BRAGG: General dental practice being vacated. High gross practice. SDA church and elementary school. Excellent opportunity. New office space available

TURLOCK: Three operatory suite in building under construction across street from hospital. Small town atmosphere with cities close at hand. SDA church and school

Colorado

ALAMOSA: Town of 6,200 with one dentist. SDA church and elementary school

BOULDER: Immediate opening. SDA church and school

BRUSH: Town of 3,700 and no dentists. SDA church in area

FORT MORGAN: Town of 7,400 with no dentists. Small SDA church

GRAND JUNCTION: Immediate need. Few dentists in this town of 26,000. SDA church and school

MONTE VISTA: Town of 3,400 with one dentist. SDA church in area

MONTROSE: Town of 5,100 with two dentists. SDA church and school

SALIDA: Town of 4,600 with no dentists. Small SDA church

Michigan

DETROIT: Opportunity to take over practice of dentist now semi-retired, who plans to retire completely. Office could be taken over on full time or part time basis. Downtown Detroit location with two operatories, laboratory, business office and waiting room

FLINT: Urgent need and immediate opening for associate in extremely large and busy practice. Opening created when former associate drafted into military service. Prefer dentist whose military obligations are completed. Guaranteed salary, however, income will depend only upon capacity to work. Six operatories. One dental assistant, one hygienist, two chairside assistants

GRAND LEDGE: Doctor of dentistry needed in city of 6,000 with an estimated trade area of 20,000. Four active dentists in area concur in need for another dentist. Beautiful new dental office, SDA church, elementary school and academy

HASTINGS: Urgent need for additional dentist in community of 6,750. Two full time and two part time dentists in town concur in need for another dentist. Will offer association, partnership, or lease of office space. New professional building

MANISTIQUE: Need for doctor of dentistry in community of 11,000. Area has only two dentists, one in general practice and one oral surgeon. Fully equipped office available at once

MARTIN: Excellent opportunity in thriving community of approximately 4,000. No dentist in town

NORTHPORT: Doctor of dentistry needed by resort area of approximately 10,000. Only two ac-

English professor authors articles

Professor of English Richard B. Lewis, PhD, has authored an article appearing in the latest issue of Andrews University Seminary Studies. The title of the study is "Ignatius and the Lord's Day."

The article follows a companion study by Fritz Guy, assistant professor of religion, now on leave for graduate study at the University of Chicago.

Dr. Lewis' research paper discusses the disputed passage in one of the epistles of Ignatius, which is usually translated to include "living according to the Lord's day but should, he says, be presented as "living according to the Lord's life."

This contention refutes the supporters of an early acceptance of Sunday worship by the Christian church, who claim that Ignatius' use of "Lord's day" soon after John used the expression in Revelation 1:10 proves that John was speaking of Sunday as a day of worship.

tive dentists in entire county. Office available and waiting

SANDUSKY: Dentist needed for private practice in community 2,000 with large trade area. Must enjoy small town. One dentist now in community. Will assist in every way possible

WHITE PIGEON: Community of approximately 10,000 needs doctor of dentistry. Not one dentist in town.

Montana

HAMILTON: Dentist accepted mission appointment. Excellent opportunity to take over established practice in new building. Two fully equipped operatories. Office building has optometrist, two dentists and one MD

South Dakota

BOWDLE: This town of 1,000 has one elderly dentist. Office available if desired. 95 member SDA church. Financially strong community

DENTISTS, SPECIALISTS

ORAL SURGEON

Michigan

HARPER WOODS: Established dentist seeking associate, with ultimate full partnership. Salary first year then arrangements leading to partnership. All educational, cultural and recreational facilities

ORTHODONTIST

Michigan

TROY: Excellent opportunity for orthodontist. Population of 40,000 and no specialties. Office available

HOSPITAL ADMINISTRATOR

California

TULARE: Tulare District Hospital seeking administrator. Must hold college degree and have five years administrative experience in hospital institution, or any equivalent combination of training and experience

NURSES

Oregon

KLAMATH FALLS: Community hospital seeking RN immediately

PHYSICAL THERAPIST

California

LOS ANGELES: GP looking for full time physical therapist to share his building



—Staff photo

JUNIOR DENTAL hygiene students (left to right) M. Nadine McDonald and Anita C. Jensen model fashions from Inland Center's Village Coach House. Class members modeled Villager and Ladybug clothes at a fashion show sponsored by the Village Coach House last Thursday evening.

Massachusetts

WORCESTER: Seeking one staff and one chief physical therapist in rehabilitation center

PHYSICIANS, GENERAL PRACTICE

California

BARSTOW: Real opportunity here in this desert community. Drawing area of 45,000. Office available. Immediately. SDA church and elementary school

CARMICHAEL: Suites in new professional building now leasing

MOJAVE: Population approximately 5,000, no MDs. Office available at once

PLACERVILLE: Immediate opening. Physician recently deceased. Office available, fully equipped. SDA church and 10 grade academy

UKIAH: Completely furnished and equipped office for rent July 1968. Office located between two general hospitals, on "medical row." SDA church, 10 grade academy, boarding academy 40 miles

Colorado

CANON CITY: City of 9,000 in need of GP. SDA church and school

COLORADO SPRINGS: City of 80,000 in need of GP. SDA church and school

RIFLE: City of 2,200 in need of GP. SDA church and school

ROCKY_FORD: MD seeking associate in this town of 5,000. SDA church and school

SPRINGFIELD: City of 1,800 seeking GP. Small SDA church

Nebraska

NORTH BEND: Physician desiring to leave for mission service. Established, high gross practice. Fully equipped office. 100 bed city owned, open staff hospital. Finances open. Will gear to ability to pay

Oregon

ROSEBURG: Professional clinic available for sale or lease, fully equipped

Washington

MILTON - FREEWATER: Town urgently in need of two GPs

WALLA WALLA: Immediate need for two GPs in this area

PHYSICIANS, SPECIALISTS

OB-GYN

Washington

WALLA WALLA: Opening on staff of Walla Walla General Hospital. At once

PEDIATRICIAN

Washington

WALLA WALLA: Opening on staff of Walla Walla General Hospital. At once

PERSONNEL SEEKING POSITIONS

Dental Assistants

1. Seeking position in Paradise or Chico area. Four years experience
2. Seeking position in Southern California area
3. Seeking position in Honolulu, Hawaii

4. Seeking position in Southern California area

Dental Hygienists

1. Seeking position in Southern California. Available in July
2. Seeking position in Southern California. Available now. Two years experience
3. Seeking position within 30 minutes driving distance of Loma Linda. Available in August
4. Seeking position within 30 minutes of Loma Linda. Available now
5. Seeking position in Pasadena or Glendale area. Available in August
6. Seeking position in San Gabriel Valley or San Francisco area

Dentists, General Practice

1. Dentist interested in association in Northern California
2. Dentist interested in association in Central or Southern Michigan. Available in June
3. Dentist interested in association in Southeastern California area
4. Dentist interested in Arizona or California

DENTISTS, SPECIALISTS

ORAL SURGEON

1. Dentist interested in locating in Northern California

ORTHODONTIST

1. Dentist interested in locating in Northern California

MEDICAL RECORD LIBRARIANS

1. Receiving degree in June 1968. Seeking placement. Interested in any area
2. Receiving degree in June 1968. Seeking placement. Interested in any area

MEDICAL SECRETARY

- 1 Seeking secretarial work in office of private physician. Experienced in insurance

PHYSICAL THERAPIST

1. Registered physical therapist seeking opening in Arizona, preferably near Thunderbird Academy. Would consider Colorado

PHYSICIAN, GENERAL PRACTICE

1. Physician completing military service in April 1968. Interested in association in Southern California

PHYSICIANS, SPECIALISTS

OB-GYN

1. Physician completing OB-GYN residency in June 1968. Interested in California and any state with reciprocity with California

OPHTHALMOLOGY

1. Interested in association in Southern California coastal area. Completed military service

PHYSICIANS, LOCUM TENENS

1. Physician seeking locum tenens in Orange County area
2. Physician available for locum tenens in California November-December 1968
3. Physician interested in six to 12 months locum tenens beginning now

MAYBERRY REALTY

Phone 796-9590 24887 Taylor Street, Loma Linda

792-0121 710 Brookside Avenue, Redlands

KENNETH E. MAYBERRY, Realtor
ALBERT J. EVANS, Associate Realtor

AZURE HILLS CONDOMINIUM

Two bedrooms and den. Two bath units. \$800 down
Priced from \$17,500 — \$18,250.

Available June 1968.

No lawn work. No exterior painting.
P. O. Box 24, Loma Linda 92354

FOR SALE

New three and four bedroom homes. \$595 down. Your choice of carpets. Two baths. From \$18,950 — \$21,950.

ORANGE GROVES DUPLEXES FOURPLEXES

Smart Money Shoppers

By now you've learned that it pays to shop for financing as well as for the item you are buying. The same goes for home loans. Be sure you get the home loan that fits your needs and budget. Talk to the man at First. He knows how to make it fit your needs.



FIRST FEDERAL SAVINGS & LOAN ASSOCIATION OF SAN BERNARDINO

SAN BERNARDINO LOMA LINDA BARSTOW
555 E Street TU 9-0881 11142 Anderson St. 796-0294 602 E Main Cl 6-6873

ATTENTION!

All University and hospital personnel. After two years' absence I am back offering the same outstanding discounts on cars and trucks of your choice that I have offered in the past. We have a large stock to choose from. No dickering, just one price. Check other prices first, then see me when you are ready to buy.

AL OGLE SKYCREST MOTORS

YU 2-8911 555 W. Foothill Blvd. OV 4-9277
Upland, California

Woman's dental auxiliary 'catches' sex education

"Sex education is not taught — it is caught," Charles E. Wittschiede, DD, told a meeting of the School of Dentistry Woman's Auxiliary during the annual School of Dentistry Alumni - Student Convention held in Loma Linda March 7-9.

"If a husband and wife have a happy, warm relationship, children detect the tone of their relationship and a healthy attitude is incorporated into the children's ideas toward sex," Dr. Wittschiede told the dentists' wives.

The Andrews University professor of pastoral care also said that we don't always allow ourselves the right to express primitive emotions. Young people need to realize that in marriage there will be fear, jealousy, and hurt, but that if these are expressed and the "irritant drained off" soon enough, these minor tensions will not build up to major proportions, Dr. Wittschiede advised.

Series of lectures

This Thursday afternoon meeting was one in a series of lectures given by Dr. Wittschiede, who lives in Berrien Springs, Michigan, to the Auxiliary on such topics as "Woman and Wife . . . Who Is She?" and "How to be Happy When Married." He was also available for private counseling.

Other activities for the ladies included a golf tournament at the Calimesa Country Club and a personal improvement class directed by Mrs. Michael M. Sayre-Smith, a lecturer on good grooming. Mrs. Dorothea Mathisen entertained the chapter representatives at a brunch held in her Loma Linda home Thursday morning.

Speaking on "How to Be an American Woman," Dr. Wittschiede

BIRTHS

BERRETH, Karla Lynn was born February 23 to Mr. and Mrs. Edward E. Berreth, University Hospital inhalation therapist, of Redlands.

DAVIDSON, Michael James was born March 2 to Mr. and Mrs. Trevor R. Davidson, nuclear medical technologist, of Loma Linda.

KOOTSEY, Brenden Lamont was born March 4 to Dr. and Mrs. J. Mailen Kootsey, assistant professor of physiology and biophysics, of Loma Linda.

LITTLEJOHN, Joseph William was born March 6 to Mr. and Mrs. William L. Littlejohn, University Hospital linen service, of Redlands.

WANTED

Registered X-ray technicians for work in the radiology department, Loma Linda University Hospital. Good pay, pleasant working conditions, delightful climate. Contact the Director of Personnel Relations, Loma Linda University, Loma Linda 92354.

chiebe was featured Friday at a luncheon held at the University dining hall. Following his talk Mrs. Bernard C. Byrd, past president of the board of directors, introduced members of the board for 1968-69. They are:

Mrs. Eugene D. Voth, Loma Linda, president; Mrs. Eldon C. Dickinson, Port Hueneme, president-elect; Mrs. Harry J. Beckner, Victorville, first vice president and hospitality chairman; Mrs. Donald L. Peters, Loma Linda, second vice president and program chairman; Mrs. Lew Mowery, San Bernardino, secretary; Mrs. Kenneth J. Mertz, Calimesa, treasurer; Mrs. Eric Kragstad, Whittier, medical representative.

Mrs. Erwin A. McDonald, Loma Linda, Junior Dental Auxiliary sponsor; Mrs. Richard W. Ludders, Loma Linda, membership chairman; Mrs. Dorothea Mathisen, chapters chairman; Mrs. Thomas F. Scott, Atascadero, SYB chairman; Mrs. Dale Shreaves, Glendale, press chairman; Mrs. Norman D. Ensminger, Loma Linda, mailing chairman; Mrs. Raymond J. Whalen, Loma Linda, missions chairman; Mrs. Carlton R. Lofgren, Colton, ways and means chairman; Mrs. Robert L. Lee, Colton, dental health education chairman.

Members of the convention planning committee were Mrs. Bernard C. Byrd, Mrs. Ernest N. Chan, Mrs. Eldon C. Dickinson, Mrs. Rhea Dortch, Mrs. Elmer E. Kelln, Mrs. Robert L. Kinzer, Mrs. Kenneth J. Mertz, and Mrs. Eugene D. Voth.

Board of directors

Continued from page 1

Herman Q. L. Montgomery, '62; Vern L. Prewitt, '59; J. Bendell Register, '59; Willis L. Schlenker, '57.

Jack H. Sloan, '63; Eugene V. Warner, '63; Dallas D. Williams, '62; and Jerry M. Wolf, '65.

Other officers of the Alumni Association are Arthur W. Johnson, '58, president elect; Erwin A. McDonald, '61, chairman for the Alumni-Student convention; John C. Eli, Jr., '60; chairman for religious activities; Robert L. Darby, '61; chairman for social activities; Robert L. Lee, '59, secretary; and Harold D. Utt, '64, treasurer.

Pediatrics staffer certified by board

Richard L. Tompkins, MD, instructor in pediatrics, was certified in the field of pediatrics by the American Board of Pediatrics last month, according to Robert F. Chinnock, MD, professor of pediatrics and chairman of the department.

Dr. Tompkins joined the University School of Medicine faculty last year.

School of Medicine faculty members author textbook

Three School of Medicine faculty members have recently authored a urology textbook for medical students, according to David B. Hinshaw, MD, dean of the School of Medicine. They are Roger W. Barnes, MD, distinguished service professor of urology, R. Theodore Bergman, MD, clinical professor of urology, and Henry L. Hadley, MD, professor of urology.

Entitled Urology, the textbook is one volume in the Medical Outline Series published by Medical Examination Publishing Company, Incorporated, of New York.

Letters

Continued from page 2

cussion of the Adventist Forum as it appeared in the editorial page of the Los Angeles Times and the comments by Mr. Kuhn.

I congratulate you on your willingness to publish this material and trust that your attempts at honest inquiry will not be stifled by anyone.

The fact that you are willing to participate in the dialogue between the self-satisfied oldsters and the questioning youngsters speaks volumes for your ability as an editor and also for your board.

Tad E. Lonergan, SM'59
Santa Ana, California

"Pornography"

Dear Editor:

We note on page three of the February 14 University SCOPE the pictures from the physical education department and would compliment the variety of activities available.

We also would compare the evident precedent of co-educational physical education classes. From a prestige University the weight of this precedent throughout our school system is frightening.

This may not be a school policy, but from the black and white "performance" on page three it is evidently the way it works out.

In most of our schools any student of the opposite gender standing on the side lines watching is told to be on his way. Even our local public school system hasn't tried this and we don't live in the "Bible Belt" either.

Our question is, has Loma Linda University "thrown in the sponge" on the General Conference recommended denominational standards and gone the way of least resistances?

Sometimes it seems we are allowing the world to "brainwash" us right down the sewer drain. Jesus said very plainly, "But I say unto you, that whosoever looketh on a woman to lust after her hath committed adultery with her already in his heart." Matthew 5:28.

The "Thou shalt not" of Holy Scripture is a fence demonstrating God's love and concern for our protection. Let's not "wash out" but "measure up."

We sent this letter to another minister who has served the church in the field of education for many years for evaluation before mailing. We quote his answer: "Send the letter . . . I think that scantily clad women in pictures (or in reality) are really pornographic."

Harry E. Darby
Pastor, Lakes District
Detroit Lakes, Minnesota

Continued on page 6

FOR LEASE MEDICAL-DENTAL OFFICES

In well established Professional Arcade in downtown REDLANDS, very reasonable, \$110 monthly including most utilities. If just opening an office, I can assist in financing. Louis Rabenstein, No. 47 E. Vine Street, Redlands, 792-1479.

General Conference placement

"It has been a great privilege for me to visit the lovely Kerala Hospital and see first-hand the development of the physical plant. For this I shall be your debtor," quoting from a report from Harley E. Rice, associate secretary of the General Conference medical department, after he evaluated this fine hospital plant in south India.

" . . . The building is well planned . . . the workmanship is of high quality. The total complement of beds when the four blocks are complete will be approximately 64 beds, 12 of these being for obstetrical patients.

" . . . This hospital potentially may be one of the finer mission hospitals in our chain of medical institutions. Completed, and landscaped, it can easily become a show place for the church. When one adds to this lovely physical plant, scientific skill and Christian compassion, the ingredients are present for a very effective medical ministry.

"It is distressing to learn that it has not been possible to appoint a physician to this post of service, and with no one even under appointment, the possible time of offering medical service is very uncertain. It seems a tragedy to have the physical plant so nearly ready to serve, to lack the essential staff, for it must ever be remembered that a hospital is principally people. The physical plant is very important, but the people are more important and the work of the hospital is effective or ineffective according to the skill, competency, dedication, motivation, diplomacy, and personality of the people who serve." For more than a year this call has been repeated, still without response.

"It has been said that, after Cicero the great orator, finished an oration, the people crowded around him spellbound and cried: 'How well you spoke.' But when the Grecian leader, Demosthenes made a speech, the aroused crowds shouted: 'Let us march.' We are often aware that the church has its Ciceros, but it does have men like Demosthenes also, who are prepared to throw out the chal-

lenge in strong, inspiring language, warning the hearts of their hearers, without mincing words, and without compromise."

Perhaps you, before you settle back into your routine of service for your immediate fellowmen, should let the arousing clarion call make its demands of your total commitment to mankind in areas abroad. So while Kerala, or the other forty locations, wait for a response, you could be making plans to fit into the great gospel commission to "go." There are calls for two dentist, two dietitians, two medical technologists, eight nurses, one physical therapist, and 26 physicians; (12 general practitioners, one anesthesiologist, one gynecologist - obstetrician, one internist, one pathologist, one pediatrician, one radiologist, and eight surgeons). This makes 41 hospitals or locations waiting for medical personnel. Surely you will never be sorry for the years you spend in medical service in another culture, on another continent.

Research paper read at annual meet

A research paper prepared by senior occupational therapy students in collaboration with Edwinna M. Marshall, assistant professor of occupational therapy, was read at the annual North-South Conference of Occupational Therapy at Morro Bay last week.

The paper, "The Occupational Therapy Theory of Geriatrics," was one of three prepared by students from California occupational therapy schools.

MEDICAL RECORD LIBRARIAN

Experienced and registered RRL required for modern facility — 413-bed general hospital — Liberal benefits — Apply personnel director, Florida Sanitarium and Hospital, 601 E. Rollins, Orlando, Florida 32803

New . . .

SPINET PIANOS

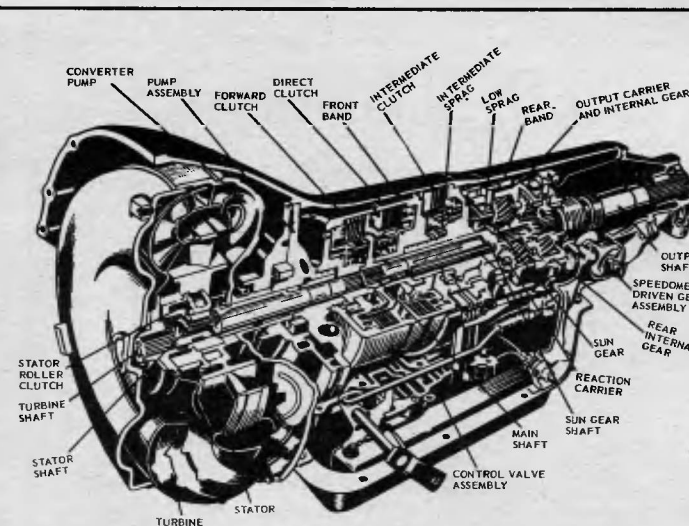
Guaranteed . . . \$395

Includes bench and delivery

HOLLEY & JACKSON

W. Redlands Blvd. and New York St.

Redlands



- ★ Complete Transmission Service
- ★ Motor Tuneup
- ★ Satisfaction Guaranteed
- ★ Brake Reconditioning

Loma Linda Automotive
24927 W. Redlands Blvd.
796-0611

Moving Across the Street or Across the Nation?



THE LOMA LINDA WAREHOUSE

TURNER MOVING & STORAGE

The moving company with 19 years of service to conferences, institutions and church members.

Box 226
St Helena
Phone WO 3-2701

Box 715
Healdsburg
Phone 433-5561

Box 201
Loma Linda
Phone PY 6-0228

Calendar

Of Future Events

Wednesday, March 20

FELLOWSHIP HALL, LL—Midweek prayer service, Frank A. Moran, associate professor of evangelism, "How Has God Guided Our Church Through Some Crises in the Medical Work?": 7 p.m.

COLE ELEMENTARY SCHOOL AUDITORIUM — Evangelistic series, Ben L. Hassenpflug, "A Thousand Years of Peace," 7161 Cole Avenue, Highland: 7:15 p.m.

CAMPUS HILL CHURCH, LL — Midweek prayer service, J. W. Turner, "Jesus, the Seeker of Men": 7:30 p.m.

LA SIERRA CHURCH, LS — Midweek prayer service, Elton A. Jones, "Are Physical Tests Conclusive?": 7:30 p.m.

Thursday, March 21

LA SIERRA CHURCH, LS — Chapel, Collegiate Christian League: 10:30 a.m.

SAN BERNARDINO VALLEY COLLEGE — Forum lecture, James A. Pike, "If This Be Heresy": 7:40 p.m.

UNIVERSITY OF REDLANDS — Festival Theater, "Skin of Our Teeth," play by Thornton Wilder: 8:15 p.m.

Friday, March 22

Sunset 6:03

COLE ELEMENTARY SCHOOL AUDITORIUM — Evangelistic series, Ben L. Hassenpflug, "Beyond the Stars": 7:15 p.m.

CAMPUS CHAPEL, LL — University Campus Fellowship meeting: 7:30 p.m.

LA SIERRA CAMPUS — Spring recess begins and continues through March 31

LINDA HALL, LL — Loma Linda Youth Association meeting: 7:30 p.m.

Saturday, March 23

UNIVERSITY CHURCH, LL — Hour of worship, pastor Paul C. Heubach, "Love and Forgiveness": 8 and 10:55 a.m.

CAMPUS HILL CHURCH, LL — Hour of worship, pastor Wilbur

K. Chapman, "On Being a Snob": 8:10 and 10:55 a.m.

LA SIERRA CHURCH, LS — Hour of worship, pastor L. Calvin Osborn, "Capital Punishment?": 11 a.m.

Sunday, March 24

LOMA LINDA CAMPUS — Spring recess begins and continues through March 31

COLE ELEMENTARY SCHOOL AUDITORIUM — Evangelistic series, Ben L. Hassenpflug, "Are We Heading for Armageddon?": 7:15 p.m.

UNIVERSITY OF REDLANDS MEMORIAL CHAPEL — University - Community Symphony, "Music for Youth": 4 p.m.

Wednesday, March 27

FELLOWSHIP HALL, LL — Midweek prayer service, Frank A. Moran, associate professor of evangelism, "Divine Guidance in the Establishment of our Loma Linda Institutions": 7 p.m.

CAMPUS HILL CHURCH, LL — Midweek prayer service, F. M. Larsen speaking: 7:30 p.m.

LA SIERRA CHURCH, LL — Midweek prayer service, Elton A. Jones, "Life and Work of Ellen G. White, part I": 7:30 p.m.

COLE ELEMENTARY SCHOOL AUDITORIUM — Evangelistic series, Ben L. Hassenpflug, "Seven Ways to Tell If You are Saved or Lost": 7:15 p.m.

UNIVERSITY OF REDLANDS MEMORIAL CHAPEL — Redlands Community Forum, Dwight Nichols, "Greece — Birthplace of Democracy": 7:30 p.m.

Thursday, March 28

SAN BERNARDINO VALLEY COLLEGE — Illustrated forum lecture, Dwight Nichols, "European Profile — 1968": 7:40 p.m.

UNIVERSITY OF REDLANDS — Festival Theater, "Skin of Our Teeth," play by Thornton Wilder: 8:15 p.m.

Friday, March 29

Sunset: 6:08

Prob-art on display at art gallery

Oil paintings by Theodore R. Smith are on display through March 22 at the Loma Linda University College of Arts and Science Art Gallery.

"Prob - Art" is Mr. Smith's term for his hard-edge oil paintings, which display a controlled but sophisticated blend of geometric constructivism, probability, and 20th century art technique, according to Herschel Hughes, associate professor of art.

Awards presented to Mr. Smith include three first place awards for sculpture at Pacific Union College, Angwin, California. The University of California at Riverside Art Gallery exhibited his art work in 1964.

Smith designed the set for "Fresco of Sound," produced at Pacific Union College, and has also designed book and magazine covers.

Employed as a mathematician at the Naval Weapons Center, Corona Laboratories, Mr. Smith received a bachelor of science degree, majoring in physics from Pacific Union College and a master of arts degree, majoring in mathematics from University of California, Redlands in 1965.

The La Sierra campus gallery, located on Campus Drive, is open to the public Monday through Thursday from 1 to 5 p.m. and on Sunday from 9:30 a.m. to 5 p.m. The gallery is closed Friday and Saturday.

LOMA LINDA AND LOS ANGELES — Alumni Postgraduate Convention begins and continues through April 4.

UNIVERSITY CHURCH, LL — School of Medicine Alumni program: 7:30 p.m.

LINDA HALL, LL — Loma Linda Youth Association meeting: 7:30 p.m.

COLE ELEMENTARY SCHOOL AUDITORIUM — Evangelistic series, Ben L. Hassenpflug, "Jesus is the Answer": 7:15 p.m.

UNIVERSITY CHURCH, LL — Hour of worship, pastor Paul C. Heubach, "Can These Dry Bones Live?": 8 and 10:55 a.m.

CAMPUS HILL CHURCH, LL — Hour of worship, pastor Wilbur K. Chapman speaking, spring communion service: 8:10 and 10:55 a.m.

LA SIERRA CHURCH, LS — Hour of worship, communion service: 11 a.m.

COLE ELEMENTARY SCHOOL AUDITORIUM — Evangelistic series, Ben L. Hassenpflug, "Are Other Planets Inhabited?": 5 p.m.

UNIVERSITY OF REDLANDS — Festival Theater, "Skin of Our Teeth," play by Thornton Wilder: 8:15 p.m.

DALE GENTRY GYMNASIUM, LL — DUO benefit program, "Oh, Nurse, Poor Nurse, the Patient's No Better and the Doctor's Feeling Worse": 7:30 p.m.

Monday, April 1

UNIVERSITY CHURCH, LL — Convocation service, John W. Osborn, president of the Southeastern California Conference of Seventh-day Adventists speaking: 8:10 a.m.

Tuesday, April 2

LA SIERRA CHURCH, LS — Chapel, John W. Osborn, president of the Southeastern California Conference of Seventh-day Adventists speaking: 10:30 a.m.

Wednesday, April 3

FELLOWSHIP HALL, LL — Midweek prayer service: 7 p.m.

CAMPUS HILL CHURCH, LL — Midweek prayer service, George Campbell speaking: 7:30 p.m.

LA SIERRA CHURCH, LS — Midweek prayer service, Elton A. Jones, "Life and Work of Ellen G. White, part II": 7:30 p.m.

PREPARATION FOR THE LATTER RAIN

A series of studies presented recently in the Loma Linda University Church. A 32 page compilation from the Spirit of Prophecy. Twenty - five cents postpaid. Write B. E. Wagner, 24978 Lawton Avenue, Loma Linda, California 92354.



—Staff photo

SENIOR SCHOOL OF NURSING students (left to right) Charlene S. Aufdemberg, Janet R. Meier, and Evelyn S. Lawson set up their prize winning table clinic in Burden Hall prior to the Mary Montie Lecture. The clinic was a miniature stage play complete with footlights and voices.

Letters

Continued from page 5

Dear Editor:

Your editorial of February 14, 1968 projects a philosophy which is certainly open to question and appears to be based on rather flimsy facts and logic.

I have yet to hear any responsible layman or official of the Seventh-day Adventist church voice the opinion that supplying beautifully coached and well applauded athletes to the Olympics or the "American Athlete Industry" is among the "goals" of Adventist Christian education.

Neither have I ever observed more than a minute fraction of the students of the schools in the communities where I have practiced who show any significant evidence of being physically fit as a result of the California school physical education programs.

Certainly the athletic industry of the public and quasi-church related colleges of the world offer no worthwhile pattern of physical education to follow! What contribution to "education" will competitive basketball games between La Sierra and Loma Linda make?

The spirit of the partisan spectators, at such frays as I have observed contribute nothing to Christian character development. Entertaining, yes; education, no! Do we not have

a surfeit of spectator sports now without adding more under a hypocritical cloak of "Christian education?"

I would recommend to you the three volume index to the writings of Ellen G. White and specifically the references under games, section 2: baseball, cricket, and football.

If you can read the sense of 95 percent of the references there listed and equate this with the philosophy of your editorial, then I should be happy to see the Loma Linda-La Sierra program move on from its present state to ticket selling, pom-pom girls, full-time coaches, and joining the Pacific Coast League. You are only three short steps from it now.

If you cannot rationalize the counsel of the EGW books, including pages 210 and 211 of Education, then I believe you are duty bound to put strict controls on the program on which you are apparently embarking or else eliminate the intramural program, or if neither of these are done, then be honest enough to say you are rejecting the counsel of the Ellen G. White books.

No one has ever risen to a position of leadership by following in the footsteps of the masses, half a century behind!

Raymond C. Kraft,
SM'54
Chico, California

TO BETTER SERVE YOU

Your Authorized Chevrolet ESDA Fleet Man

GARY ISAACSON

is now at

BILL BADER CHEVROLET

16666 Foothill Blvd., Fontana



For your convenience
Please call for appointment
Phone Office TR 5-2010, 822-1111
Home 686-2950

New and Used
Chevrolet Cars and Trucks
Prompt Courteous Service to All
Seventh-day Adventists

THE NEW DESERT EMPIRE in VICTOR VALLEY

Offers the most basically sound investment opportunity in California's History

An assured water supply via Feather River Water Project

— A new strategically located railroad —
—a fine network of freeways—
—adequate airport facilities and nearby recreation areas offering boating—fishing and water sports—

AND SMOG FREE AIR

—TOP VALUE—

320 acres. ¼ mile frontage on main highway in heart of industrial area. \$650 per acre next to Anadite. This is priced well under surrounding parcels.

CHET WILLIAMS, Realtor

Fontana, Calif. 92335

Phone (213) 822-2434

15951 Sequoia Avenue

Loma Linda Realty And Insurance

SINCE 1936 PH. 796-0242

11112 Anderson St., Loma Linda

— FOR SALE —

2 units (3 bdrm. and 2 bdrm.) both rented, cycling distance from LLU campus on lot 55 x 130. Priced for quick sale. \$19,750. Terms O.K.

16 units. Highlands. All 1 bdrm. furnished with coolers front and rear doors. Quiet, clean location. Room to build more units. Owner will carry financing. Asking \$105,000. Make offer.

26 unit modern apt. house. Ten - 1 bdrm units — 14 - 2 bdrm. units. All units have stoves, refrig. cooling. Off street parking. Sewer. Nicely landscaped. Heated pool. Asking \$240,000. Good terms with minimum down of \$30,000.

WE HAVE RENTALS - HOUSES AND APARTMENTS
We write Dwelling, Fire and Auto Insurance

PRIVATE SUMMER CAMP

in beautiful

Treasure Island Ranch

1000 acres of Magnificent

Sierra Mountain Paradise

- Horsemanship
- Camping
- Canoeing
- Hiking
- Overnight Hikes
- Crafts
- Coeducational
- 7 Lakes
- 1 ½ miles of river on property
- 20 miles of trails
- Active cattle ranch

Mr. and Mrs. Gordon Evans, directors

CHARACTER BUILDING — ALL S.D.A. STAFF

June 23 — August 11

WRITE FOR FREE BROCHURE

(916) 622-4371

2000 Broadway

Placerville, Calif.



—Staff photo

JO ELEANOR ELLIOTT (second from right) visits with (left to right) R. Maureen Maxwell, EdD, professor of nursing; Maxine Atteberry, dean of the School of Nursing; and Joyce W. Hopp, instructor in health education. A reception was held for Miss Elliott preceding the Mary Monteith Lecture.

Nursing president defends position on diploma schools

Jo Eleanor Elliott, president of the American Nurses Association, challenged nurses to rise to their full professional stature last week, as she delivered the annual Mary Monteith Lecture.

Over 200 nurses listened as Miss Elliott outlined the direction which nursing education is taking and the needed changes in nursing service.

Defending the American Nurses Association position - paper on the future of diploma

schools of nursing, the president pointed out that the ANA in itself cannot close hospital schools as it has been accused of doing.

"Only state boards of nursing or the hospital itself can do this," Miss Elliott emphasized. "But I commend the ANA house of delegates for its forthright stand in this area."

Nurses from the Inland Empire joined Loma Linda University School of Nursing alumni in attending both the evening lectureship and the reception for the president earlier in the evening.

Mary C. Monteith, emeritus associate professor of nursing, was present for the lectureship named in her honor.

tor at Magdalene College, Oxford, Lewis' busy schedule can lend some consolation to those of us who sometimes work at teaching six days a week: "I am at present just so busy that I don't know if I'm on my head or my heels." Immediately after the Easter letters, he began examining students, reading an average of 20 scripts a day (including Sundays) for six weeks, followed by "viva voce examinations" which took eight hours a day. "I shall become human again at about the end of September." When he transferred to Magdalene College, Cambridge, as professor and was advancing toward the age of 60, he was still "frantically busy,"

Dinner benefits Fiji Islanders

A benefit sale and dinner to raise funds for the "Fiji Agriculture Industrial Training Headquarters" will be held next Sunday in Linda Hall.

Last year Loma Linda agriculturist Jacob R. Mittleider visited with three Fiji Islanders who studied his revolutionary growing techniques with him in New Guinea.

Under Mr. Mittleider's instruction they and six others from other South Pacific Islands cultivated "devil land" which had been rejected by the natives. They produced enough food from three and one-half acres to feed 175 persons.

Mr. Mittleider, who founded the industrial training headquarters, accepted from Loma Linda University an assignment to tour 24 underdeveloped countries and submit a report on ways of making food available to these countries.

Food for the benefit dinner will be provided by the Loma Linda Dorcas Society. The dinner is scheduled for 11:30 a.m. to 2:30 p.m. Donations of cash and food are welcome.

Neurosurgeon dies after brief illness

Funeral services for Kenneth H. Abbott, MD, clinical professor of neurosurgery, were conducted earlier this month at the Glendale Adventist Church, Glendale.

Dr. Abbott, who lived in Glendale, died March 3 in Glendale Adventist Hospital after a brief illness.

For nearly 10 years he had maintained a private practice in Los Angeles. In addition to his University appointment, he was on the faculty of the school of medicine at University of Southern California, Los Angeles.

Dr. Abbott was chief of neurosurgery at White Memorial Medical Center, Los Angeles.

and complained that although he didn't get more tired than when he was younger, it took much longer to get "un-tired afterwards."

When Mary wrote of her over-busy schedule he replied that God may not wish one to do all sorts of work he needn't do, that "what feels like zeal may be only figits."

Such bits of wisdom on all kinds of subjects occur frequently throughout the Lewis easy-to-read letters. He occasionally admonished the lady to "weep a good honest howl," to avoid letting "nasty people become an obsession to haunt our minds," to avoid normal prayers when ill and over-tired, to learn to depend solely on God in order to avoid depending on things, to accept graciously help others may proffer, to pray for God's mercy rather than His justice on one's friends, enemies, and on oneself. Therein is courage for all and support for various opinions and observations one is likely to make:

Medicine: "In your country people are far too medically minded: they read and think too much about health and go to doctors too often!"

Hospitals

Hospitals: "Where the nurses vanish when you really need them, where the televisions

Nursing Alumni News

The Loma Linda University School of Nursing Alumni Association has scheduled a rummage sale for March 31 - April 3.

The sale will be held in the southeast corner of the recently vacated hospital building. Hours for the sale are 10 a.m. to 5 p.m.

Alumni, are you remembering to send in at least one dollar to Loma Linda University this year? Remember the number who contribute is important, not just the amount. Be sure to make your check out to Loma Linda University and keep in mind the Student Loan Fund. This we are hoping to build up to the point where the interest will accrue to benefit worthy students.

Margaret Christensen Fryling, '53, is thoroughly enjoying her furlough from Medellin, Colombia. She and her family live

presently in Berrien Springs, Michigan. She works part time in the Andrews University Health Service while her husband Virgil is earning his master's degree majoring in music education. They are looking forward to returning to their field of labor in South America in August.

June Gilchriese, '48, writes from Tucson, Arizona, that her family's investment in a home and museum is gratifying. Last month their museum was featured on a local television station. June is back to nursing part time in the coronary unit in the local hospital.

Flossie Case Giebelhouse, '43, is anticipating a 25th anniversary class reunion May 30 at our alumni homecoming. She declined the invitation to teach in the School of Nursing at Portland in favor of housekeeping, gardening, and cooking.

make the nights 'hideous,' where the night nurse wakes you out of your first good sleep in a month, at midnight, to give you a sleeping pill."

Medical Students: Asked Mary if she had not been the subject of demonstrations to medical students, told her that in Oxford they give students their examinations at the bedside of the patients, examiners and students frightening, begowned, and wearing mortarboards. "But I'm told that experienced patients have been known to whisper the correct diagnosis to the student if he gets stuck."

Money: Lewis was "panic-y" about money and frightened of poverty more than "anything else except large spiders and the tops of cliffs." And he was continually wondering how God wanted us to live as the lilies of the field when he didn't give us the same lack of nerves and imagination as they enjoy! "Or is that just the point, the precise purpose of this Divine paradox and audacity called Man—to do with a mind what other organisms do without it?"

Siamese Cats: He was very "cat-minded," and talked much of his "step-cats" whom he lifted by the tail because she always purred for more.

Of Seventh-day Adventists: He could never find out what they believe, though in a long talk with one who was a professor of electrical engineering in America he got the idea it was mixed up with the prophecies in the book of Daniel—"not, to my mind, a very profitable undertaking." He thought the professor a "grand young chap, sweet as a nut and

absolutely sincere. No fool, either." Mary, who was a Roman Catholic, must have alluded to the church further, for in his next letter he became extremely interested in what she said about the "VII Day Adventists. If they have so much charity there must be something very right about them."

Death: His wife of five years died of cancer on July 13, 1960. "I can't describe the apparent unreality of my life since then." He suggested to Mary three things that one can do about death: desire it, fear it, or ignore it. And the third "is surely the most uneasy and precarious of all." He finally gently approaches mention of their own decline by saying that an old man and an old woman have not much more to do here. Later he signed one of his last letters to Mary: "Yours (and like you a tired traveler, near the journey's end), Jack . . . You must expect my letters to be very few and very short. More a wave of the hand."

Then on November 22, 1963, the day our President John F. Kennedy was assassinated, Lewis died, having asked his secretary to tell Mrs.— he is much concerned for her and prays that courage may be hers now and henceforth.

OPPORTUNITIES

Excellent opportunities in British Columbia for physicians and dentists. Conference eager to assist. Kindly contact medical secretary, Reuben Matiko, MD, Box 10, Mission City, BC, Canada.

50% OFF

for all LLU employees

Bring employee identification card

WIGS • FALLS • WIGLETS • CASCADE

- Hand Tied
- Semi-hand Tied
- Machine Made

KOREA CENTER

537 N. "E" Street Tel. TU 4-3017 San Bernardino



HERITAGE GARDENS

RETIREMENT & CONVALESCENT CENTER

"Warm Personal Care for Those YOU CARE FOR"

- 24-HOUR REGISTERED NURSING
- SEPARATE FACILITIES FOR THE RETIRED
- Arts & Crafts

796-0216

We Invite Your Inspection Brochure on Request

BARTON RD. AT BENTON LOMA LINDA From B. way take Waterman turnoff South to Barton Rd. - then East to Heritage Gardens

Classified

Beautiful "A" frame cabin facing private lake for sale in the Big Bear Lake area. 2,600 square feet. Reasonably priced. Near winter and summer sports area. All utilities. Smog free. Terms available. Write to Box 223, Loma Linda, California 92354, or phone (714) 796-0945.

Meticulous, mature, experienced couple to manage 34 luxury apartments in La Sierra.

Send resume to: 13071 Central Avenue Chino, California 91710

"Before you Buy...



understand leasing."

People who have money generally are interested in keeping it. And that, in effect, is what our leasing service is all about. Any make and model of car is available to you on a one, two or three year lease with an absolute minimum amount of cash required. Result—your money is free to do other things: invest in stock, real estate or other ventures that put your money to work.

Leasing, however, is not for everyone. Neither are new cars. But if you're ready for a new car, investigate our service and discover if you're ready for leasing.

For details, phone or stop by our office.

BOB NEW, INC. Car Leasing

736 North Glendale Avenue, Glendale, California 91206

Telephone: **(213) 245-7716**

Consumer science building opens on La Sierra campus

"It's like a beautiful dream come true." This is how Mary P. Byers, associate professor of consumer related sciences and head of the department, describes the newly constructed consumer related sciences building.

The home economics department, recently renamed the department of consumer related sciences, has been sharing the facilities in Ambs Hall with the department of industrial arts.

The 374,000 L-shaped building will contain cooking, experimental foods, animal observation, clothing, textile analysis, and child development observation laboratories.

A donation of freezing and refrigeration equipment valued at \$5,000 was obtained by Paul S. Damazo, college food service director and an instructor in the department.

The clothing laboratory will be furnished with 13 new Berdina sewing machines plus five other machines from the old building. Each sewing unit will accommodate four students.

Other facilities include an 128-capacity auditorium and a lounge where students may relax and visit. On the first floor of the two-story building will be four carpeted and completely furnished dining rooms which, when the room dividers are re-

moved, will open up into a large banquet room.

The building has not yet been officially named. On its exterior, however, it will bear the designation, "Consumer Related Sciences." Future plans include the addition of a third floor to the building.

La Sierra campus clubs host school

Last month, the agriculture club and the horseback riding club were the hosts to 21 students from the California School for the Deaf at Riverside. The children ranged in age from six to 12.

While one group of 15 students and two teachers was enjoying a short ride on the school's horses under the direction of Daniel Skeoch, a member of the horseback riding club, the other group was taken on a hayride tour of the farm, including stops at the poultry ranch and creamery. The tour was under the direction of Lee Kaufholtz, president of the agriculture club. Service Corps arranged for the program and helped defray the costs of the refreshments served to the children.



—Photo by Robert A. Kreuzinger

LARGE NUMBERS of University friends and alumni toured the new La Sierra campus Consumer Related Sciences building last Sunday. The two-story building houses the former department of home economics. Attractively designed and furnished, the new building on Campus Drive became available to the department's teachers and students this month at a cost of \$450,000.

EXCELLENT OPPORTUNITY

Assistant Administrator or administrative assistant for 232-bed hospital and sanitarium. Hospital administrative experience preferred. Excellent urban or rural living. Fine elementary - secondary church school. Large active church. Write to Paul J. Gerhardt, Personnel Director, Battle Creek Sanitarium, 197 N. Washington Ave., Battle Creek, Michigan 49017, or call collect area code 616-964-7121 Ext. 586.

VOOCHEN Real Estate

IN LOMA LINDA

Three units on Barton Road, 2 blocks to Hospital. One has 2 bedrooms and two have one bedroom each. On corner lot of 61 x 140. All rented. Out of town owner. \$23,000. \$1000 down or more.

Also a duplex, 2 blocks to Hospital one bedroom on each side plus one unused bedroom on each side in the attic. Both rented furnished but will sell unfurnished if desired. Lot 50 x 140 with room for more units. \$15,000 — \$1000 down or more. Out of town owner.

IN LA SIERRA

Eight units near college (University) on three acres of ground with room to build more. Consists of 2 houses and 6 apartments. No rental problem here and no loan problem. Owner will carry balance on easy terms at only 6% interest. This kind of setup is hard to find. Asking \$67,000.

"M-3" zoned for manufacture on Magnolia off freeway near SDA college, lot 145 x 255 plus 2 bedroom home. Out of town owner wants \$28,000.

Now too large for one person but in A-1 location. Only 3 blocks to SDA church and schools. Three bedroom home with dining room and in spic and span condition. Fenced yard. \$21,200. Owner will carry loan.

If you are moving to La Sierra, this should be the first house to see. Walking distance to all SDA institutions. Owner is transferred to Washington State. House has three bedrooms and large den, built-in electric kitchen, 2-car garage, fenced yard. \$21,000. Easy FHA terms.

SECURELY INVEST YOUR MONEY AT 7 1/2 %

We need \$20,000 on first Deed of Trust on property valued at \$50,000 in center of La Sierra, with steady increase in value because of the location. Call, write or see Mr. Voochen at 11151 Pierce St., Riverside, Calif. 92505 Phone (714) 689-8113 or evenings 689-3610.

VOOCHEN

11151 PIERCE RIVERSIDE, CALIF.

Ph. 689-8113
Call Collect

Jan Worth Recommends...

The world grows smaller. Each year, thousands of Americans stream abroad to foreign countries, each bringing home a little more world understanding, a little more knowledge of the life and habits in other countries.

Knowing the clothing, the culture, and the food of other countries is surely one of the finest ways to promote understanding and friendship. We were reminded of this again and again during the recent Jan Worth Recipe Contest. We received many unusual and delicious recipes with a foreign flavor. Three of the prize winners are presented here. They are easy to prepare and offer a new taste treat for your family. We hope you enjoy them.

Sincerely,

Jan Worth



EGG FOO YONG

2 cups diced celery stalks and leaves
1 cup diced onions
1 can bean sprouts, drained
1 small can mushrooms, drained and diced
1 cup VEGETARIAN ENTREE, HAM STYLE, diced

1/2 teaspoon garlic powder
1/2 teaspoon Accent
1/2 teaspoon salt
3 Tablespoons fine bread crumbs
5 eggs

Beat eggs well. Mix above ingredients in egg. Deep fry like patties using 1/4 cup of mixture in each. Brown both sides. Serve with boiled rice, sliced green onions and brown sauce. BROWN SAUCE: Boil together till thick; 2 Tablespoons soy sauce, 1 cup water, 1 Tablespoon flour, 1/2 teaspoon Accent, 1/4 teaspoon salt. Stir often. Serves 6-8.

Ester T. Vizcarra
Coulee Dam, Washington



SICILIAN SUPPER

1/2 cup Parmesan cheese
1 pound VEGETARIAN ENTREE, BEEF STYLE SLICES, ground or VEGETARIAN BURGER
1/2 cup chopped onion
1 8-ounce pkg. cream cheese
1/2 cup chopped green pepper

1 6-ounce can tomato paste
3/4 cup water
Salt to taste
3/4 cup milk
Pinch garlic salt
2 cups egg noodles, cooked

Brown "beef", or "burger", add onion. Cook until tender. Add tomato paste, water and salt. Simmer 5 minutes. Heat milk and cream cheese until blended. Stir in 1/4 cup Parmesan cheese, garlic salt, green pepper, and noodles. In casserole, alternate layers of noodles and "beef" sauce. Bake at 350° F. for 20 minutes. After baking, sprinkle with remaining cheese. Serves 5-7.

Ruth Sparks
Stoneham, Massachusetts



SOUTH-OF-THE-BORDER-SUPPER

1/2 box WORTHINGTON MEAT LOAF MIX, rehydrated in 1 cup tomato juice
2 cans Mexican pinto beans in chili gravy
1 large head of lettuce, shredded
1/2 cup chopped onion

1 to 1 1/2 cups shredded colby cheese
1/2 to 1 cup sliced or chopped ripe olives
1 medium package of Fritos or other corn chips

Add MEAT LOAF MIX to beans and gravy and simmer until MEAT LOAF is tender. In individual bowls place a generous serving of Fritos and over this a generous serving of shredded lettuce. On the lettuce pour a generous serving of the bean-MEAT LOAF mixture and sprinkle with cheese, chopped onion, and olives as desired. Serves 4-6.

Mrs. J. W. Row
Berrien Springs, Michigan

Worthington Foods, Inc. • Worthington, Ohio 43085
Tomorrow's Foods Today