



LOMA LINDA UNIVERSITY

Loma Linda University
**TheScholarsRepository@LLU: Digital
Archive of Research, Scholarship &
Creative Works**

Commencement Programs


Loma Linda University Publications

6-2005

Commencement Program 2005

Loma Linda University

Follow this and additional works at: <https://scholarsrepository.llu.edu/commencement-programs>

 Part of the [Other Dentistry Commons](#), [Other Medicine and Health Sciences Commons](#), [Other Nursing Commons](#), and the [Other Public Health Commons](#)

Recommended Citation

Loma Linda University, "Commencement Program 2005" (2005). *Commencement Programs*.
<https://scholarsrepository.llu.edu/commencement-programs/57>

This Book is brought to you for free and open access by the Loma Linda University Publications at TheScholarsRepository@LLU: Digital Archive of Research, Scholarship & Creative Works. It has been accepted for inclusion in Commencement Programs by an authorized administrator of TheScholarsRepository@LLU: Digital Archive of Research, Scholarship & Creative Works. For more information, please contact scholarsrepository@llu.edu.

ONE HUNDREDTH YEAR



two thousand and five

LOMA LINDA UNIVERSITY

Conferring of Degrees

MAY TWENTY-NINE AND JUNE TWELVE

LOMA LINDA, CALIFORNIA

CONTENTS

2005 Events of Commencement,	2
President's Welcome,	3
Centennial Litany,	4
Celebrating Our Centennial of Global Service,	5
Path of History: Loma Linda University Historical Sites,	7
The Academic Procession,	11
Significance of Academic Regalia,	12
The Speakers,	13
The University Honorees,	20
The School Honorees,	25
The Programs,	35
School of Medicine,	36
School of Dentistry,	43
Graduate School,	52
School of Nursing,	62
School of Allied Health Professions—Physical Therapy,	67
School of Allied Health Professions,	73
School of Public Health,	81

2005 EVENTS OF COMMENCEMENT

CONFERRING OF DEGREES

Medicine	May 29	8:30 A.M.	Campus Mall
Dentistry	May 29	5:00 P.M.	Campus Mall
Graduate	June 12	8:00 A.M.	Drayson Center
Nursing	June 12	10:30 A.M.	Drayson Center
Allied Health Professions—PT	June 12	1:00 P.M.	Drayson Center
Allied Health Professions	June 12	4:00 P.M.	Drayson Center
Public Health	June 12	6:30 P.M.	Drayson Center

BACCALAUREATE SERVICES

Dentistry	May 28	8:30 A.M.	University Church
Medicine	May 28	11:15 A.M.	University Church
Allied Health Professions, Graduate, Nursing, and Public Health	June 11	11:15 A.M.	University Church

VESPER SERVICE

FOCUS ON GRADUATES

Loma Linda University Responds

Allied Health Professions, Graduate, Nursing, and Public Health	June 10	7:30 P.M.	Wong Kerlee International Conference Center
-----------------------------------------------------------------------	---------	-----------	------------------------------------------------

DEDICATION CEREMONIES

Dental Hygiene Pinning	May 27	6:30 P.M.	Wong Kerlee International Conference Center
Medicine Hooding	May 27	6:30 P.M.	University Church
Dietetics Pinning	June 11	7:30 P.M.	University Church Chapel
Occupational Therapy Assistant, Occupational Therapy Pinning	June 11	10:00 A.M.	University Church Chapel

PRESIDENT'S WELCOME

Warmest congratulations to the Graduates of the Classes of 2005 of Loma Linda University!

Our health-sciences community has been honored that you chose to complete your academic and professional preparation on this campus. We are proud of you, and we celebrate with you your academic accomplishments in this, our centennial year.

This is an institution of destiny, as has been evident from the beginning. Early in 1905, Mrs. Ellen White, a woman of inspiration, indicated that property would become available at an affordable price in the Riverside/San Bernardino/Redlands area. On this property was to be established an institution that would become a great leader in education and health care. Based on this mandate, Elder John A. Burden began searching for property and located Loma Linda. It was May 29, 1905, when Elder Burden made the initial payment on the property. Mrs. White's first visit to the campus on June 12, 1905, was when she declared that this was the place she had been shown. Providential leading was evident from the time of the purchase and the availability of funds received "just in time" to meet commitments. Through every succeeding decade, the institution has faced a diversity of challenges; and in every instance, God's sustaining power has been evident.

We truly stand on the shoulders of visionary men and women of faith who risked everything to fulfill a divine calling. Now we are depending upon you, our graduates, to fulfill the mission of Loma Linda University by continuing the healing and teaching ministry of Jesus Christ in the twenty-first century.

May God richly bless you as you go forth to make the mission a reality by bringing health, healing, wholeness, and hope to hurting humanity.



B. Lyn Behrens, M.B.B.S, President of the University

CENTENNIAL LITANY

- President/
Chancellor** This centennial anniversary marks a historic milestone in the life of our institution. On this occasion we pause in gratitude to reflect on 100 years of phenomenal growth and monumental successes and continuing progress, of crises met and challenges overcome.
- All** For a century of wonderful works, we give You thanks, O Lord.
- LLUAHSC** We celebrate divine Providence that guided the founding of this institution—ordained to be “distinctive in concept and in the quality of its service and training programs.”
- All** For Your gracious favor and continued help, we give You thanks, O Lord.
- Chancellor/
Vice Chancellor** We celebrate the clear vision and unwavering purpose of pioneers who dared majestic things, the urgency of leaders who dreamed glorious triumphs—Ellen White and John Burden, Julia White, Elder and Mrs. Stephen N. Haskell, and a nameless host of shining models of selfless, generous service.
- All** For pioneers with a sense of mission and divine calling, we give You thanks, O Lord.
- Dean** We celebrate those who in this place have ignited a passion for learning and service, and those who have equipped new generations to engage our world’s increasingly complex challenges in the spirit of our Sovereign Master.
- All** For those who serve in truth, beauty, and righteousness that Your kingdom may be enlarged, we give You thanks, O Lord.
- Faculty** We celebrate those who today join the ranks of alumni and colleagues—those whose zeal and dedication, in the spirit of the Master Healer, will determine the future measure of Loma Linda University.
- All** For this graduating class and their sense of high calling, we give You thanks, O Lord.
- Students** We acknowledge the high privilege that is ours to go out from this place as living lights into the darkness of the world to do God’s work.
- All** For works begun and sustained in You, we give You thanks, O Lord.
- President /
Chancellor** We celebrate a century of “Fulfilling the Vision” of excellence in Christ-centered education, compassionate health care, and global service—a century of fulfilling our mission—To make man whole—as we continue the healing and teaching ministry of Jesus Christ. We praise God for His marvelous works in the past and trust Him for continued blessings in the future.
- All** To God be the glory forever.

CELEBRATING OUR CENTENNIAL OF GLOBAL SERVICE

LOMA LINDA UNIVERSITY ADVENTIST HEALTH SCIENCES CENTER

Fulfilling the Vision... *...a brief history*

Loma Linda University and Loma Linda University Medical Center this year proudly celebrate their 100-year anniversary. From 1905 to 2005, the unwavering dedication of faculty and staff who promoted healthful living and provided care for the sick has sustained and shaped this University to become one of the nation's leading health-sciences centers for education and healing.



From humble beginnings, Loma Linda University and Loma Linda University Medical Center have grown to be leaders in patient care; pioneers in the practice of life-saving medicine; and partners in the education of generations of students in the medical, dental, nursing, public health, pharmaceutical, natural and basic research sciences, and allied health professions.

The property where Loma Linda University now stands was first developed as a plush Mound City Hotel during the 1887 to 1888 boom days. Following the 1890 depression, the hotel complex failed. A group of investors

bought the failed property, investing \$155,000 in hopes of making it one of the finest health resorts in southern California. This effort also failed.

It was the kind of place that aroused enthusiasm. When Ellen G. White, Adventist pioneer and spiritual guide, first visited Loma Linda, she was captivated by its beauty—describing it as “the most desirable place I have ever seen for a sanitarium.”

Through divine providence, the property came to the attention of John Burden, one of the founders of Loma Linda University.

The asking price of \$110,000 was prohibitive for the fledgling Seventh-day Adventist Church. The price continued to drop, however, until the owners ordered the property sold for \$40,000. With personal funds, John Burden and others obtained an option on the property and paid off the note—by then discounted to \$38,900—before the end of the year.



On August 26, 1905, Loma Linda Sanitarium was incorporated; six weeks later—on October 13—the first two patients were admitted. Loma Linda was in business! Six decades later, the present eleven-story Loma Linda University Medical Center (LLUMC) opened on July 9, 1967—an outgrowth of the original sanitarium on the hill. With the completion of Loma Linda University Children's Hospital in late 1993, nearly 900 beds are now available for patient care—including beds at Loma Linda University Medical Center East Campus and Loma Linda University Behavioral Medicine Center. Loma Linda University Health Care, a management-service organization, supports the many programs and services provided by our 400-plus faculty physicians. Loma Linda University Medical Center operates some of the largest clinical programs in the United States in areas such as neonatal care and outpatient surgery, and is recognized as the international leader in infant heart transplantation and proton treatments for cancer. Each year the institution admits more than 33,000 inpatients and serves roughly half a million outpatients. As the only tertiary-care hospital in the area, LLUMC is the only Level I regional trauma center for Inyo, Mono, Riverside, and San Bernardino counties.

In December 1905 Loma Linda accepted its first nursing students; and on July 10, 1907, the first Loma Linda nurse commencement was held. Today more than 4,000 students study in eight schools and the Faculty of Religion. More than fifty-five programs are offered by the Schools of Allied Health Professions, Dentistry, Medicine, Nursing, Pharmacy,

Public Health, Science and Technology, and the Graduate School. These programs offer multiple curricula—ranging from nondegree certificates of completion to postdoctoral specialty certificates; and from associate degrees to doctoral-level professional and academic degrees. Students from more than eighty countries around the world and every state in the nation are represented in Loma Linda University's student body.

Through providence, Loma Linda has truly grown and prospered beyond the early leaders' expectations. It has emerged into a health-sciences university and medical center internationally known for advanced technology, service-oriented medical care, and education. Beginning February 2005, Loma Linda celebrates this milestone with a series of events and other commemorative activities through April 2006.

"Fulfilling the Vision" has been selected as our centennial theme—referring to the institution's vision of excellence in Christ-centered education, health care, and "making man whole."



PATH OF HISTORY

LOMA LINDA UNIVERSITY HISTORICAL SITES



1. Good Samaritan statue

The self-guided walking tour of Loma Linda University's historical sites begins at the Good Samaritan statue, centrally located on the campus. The sculpture exemplifies the mission of the University, articulated in its motto—To make man whole. Created by artist Alan Collins, it depicts the story told by Jesus in the Bible, recorded in Luke 10:30-37. This narrative expresses God's love and compassion for His children and, in turn, models how the Creator who became human wants us to relate to one another. The original limestone sculpture was dedicated in May 1981, and its bronze replacement was dedicated in October 1995.



2. Heritage Room

The Heritage Room is the repository for institutional and denominational historical resources housed at Loma Linda University. Located in the Radcliffe wing of the Del E. Webb Memorial Library, the Heritage Room comprises two administratively separate entities—the Department of Archives and Special Collections and the Ellen G. White Estate Branch Office. The stored collections include print, audio, film, and three-dimensional artifacts. Monographs related to the history of medicine, as well as rare books on a variety of subjects, complement the collection.



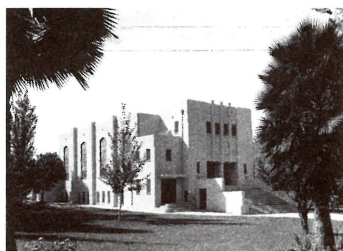
3. Site of the original Loma Linda Hospital

Medical training at Loma Linda University (originally College of Medical Evangelists) began in 1909. It soon became apparent that, in addition to the sanitarium, expanded clinical facilities were needed for teaching purposes. The first hospital was built in 1913 on the east side of Campus Street in the middle of the basic sciences quadrangle. The hospital was never utilized to capacity—probably because clinical training for the junior and senior years was conducted in Los Angeles at the White Memorial and Los Angeles County General hospitals. Later renamed West Hall, the building housed an assembly room, church sanctuary and chapel, dormitory for male medical students, cafeteria, laboratory, and dispensary. It was razed in 1942.



4. American Medical Missionary College (AMMC) stone

American Medical Missionary College—the first medical school supported by the Seventh-day Adventist Church—was founded in 1895 in Battle Creek, Michigan. John Harvey Kellogg, M.D., was president. In 1899 the first graduating class gave this rock—which bears the engraved message, “Let us follow Him”—to its alma mater as a graduation gift. Many of the first teachers at the College of Medical Evangelists (CME) were graduates of AMMC. The five-ton stone was transported to Loma Linda in 1955 and is now located on the campus between Evans Hall and Shryock Hall. It is a reminder of the bond between Loma Linda University and Battle Creek, out of which grew our Adventist health work.



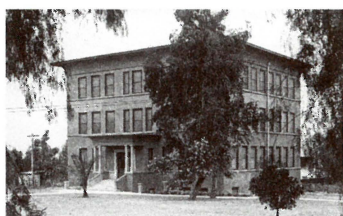
5. Burden Hall

This building is named in honor of John Burden, who was instrumental in the founding of Loma Linda University. Burden facilitated the purchase of the property in 1905. He was administrator and business manager of Loma Linda Sanitarium from its founding until 1915. Burden was also involved in the establishment of other sanitariums in California, as well as in Australia. Burden Hall was built in 1934 and originally served as a chapel/church. In later years, parts of it were used as classrooms and a library. Today the basement houses the University Relations and Academic Publications offices.



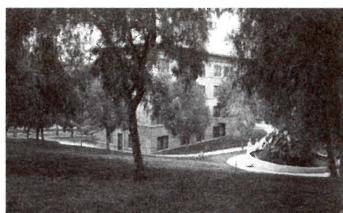
6. Site of South Laboratory

South Laboratory was the second laboratory built on the campus of the fledgling College of Medical Evangelists. It was constructed in 1919 of wood from World War I barracks. The departments of chemistry, physiology, and pharmacology were housed in South Laboratory. Later it became the clinical laboratory and dispensary for Loma Linda Sanitarium and Hospital, as well as for the college. In 1948 the building became the headquarters for the School of Tropical Health and Preventive Medicine (later the School of Public Health) before the school moved to Nichol Hall. The building, located adjacent to Anderson Street and northeast of the Del E. Webb Memorial Library, was demolished in 1969.



7. Site of North Laboratory

North Laboratory, built in 1911, was adjacent to Anderson Street—opposite and north of South Laboratory. Initially called the School of Medicine building, it was renamed North Laboratory after South Laboratory was built. The rectangular, three-story building (which included a basement) housed the anatomy, histology, and pathology laboratories. The campus library was also located here from 1911 to 1918. Later North Laboratory served as the School of Medicine's administration building. It was demolished in 1936 when Evans Hall, the pathology building immediately to the west, was constructed.



8. Women's dormitory

The student-housing deficit was recognized in the early days of the College of Medical Evangelists. Fundraising for a new structure began in the spring of 1911; and since there were more female than male students, a "girls' dormitory" was more urgently needed. For more than two decades the building was referred to informally as the ladies' dorm or the nurses' home. In 1936 the dormitory was officially named Kate Lindsay Hall, in honor of the physician who persuaded administrators at Battle Creek to establish the first Seventh-day Adventist nursing school. This building was used until 1960, when the current Kate Lindsay Hall was opened just east of the old building.



9. Loma Linda Chapel

For nearly three decades, Loma Linda Chapel was the spiritual center for the College of Medical Evangelists. The chapel served as campus church after services were relocated there subsequent to being held first in the sanitarium parlor and then in the Assembly Hall. Completed in 1910, the chapel was a wedge-shaped building that included a main floor, gallery, and belfry. It was located at the entrance of the current Kate Lindsay Hall. By 1928 the congregation had outgrown its quarters. A new church, known as the "church on the hill," was constructed ten years later.



10. Loma Linda Sanitarium

The sanitarium's history is intertwined with that of the fertile San Bernardino Valley at the turn of the twentieth century. Land speculators had developed Mound City and its villa in 1887. This venture was followed by a new undertaking in 1900—Loma Linda Hospital and Health Resort (“Loma Linda” in Spanish means “Hill Beautiful”). Both ventures failed. In 1905 John Burden, acting on behalf of Ellen G. White (who saw potential for a Seventh-day Adventist sanitarium in the valley), began negotiating with the owners to purchase the land and buildings at a price considerably below value. After a series of providential experiences, Loma Linda Sanitarium was incorporated on August 24, 1905. The main building was an ornate four-story, sixty-four-room structure that had electricity, was completely furnished, and was heated by steam. What followed—providing quality health care for patients and quality training for health care workers—was a venture begun and sustained by faith.



11. Loma Linda Bowl

Loma Linda Bowl was built in 1924, just in time for graduation on May 30. The shell and concrete platform, which replaced the original wooden platform, were added in 1935. The last graduation took place there in 1950, but the College of Medical Evangelists held its fiftieth anniversary celebration program there in 1955. In 1964 the bowl was demolished.



12. Second Loma Linda Hospital

A new-and-improved hospital facility, with a patient capacity of thirty-two, was built on the hill in 1924. The structure still stands as part of the west end of Nichol Hall.



13. Loma Linda Sanitarium and Hospital

In 1928—only four years after the second Loma Linda Hospital was completed—a ground-breaking ceremony was held for a greatly enlarged addition, which opened on March 30, 1929. This expanded facility was the main health care unit until 1967, when the nine-story Loma Linda University Medical Center opened its doors. Loma Linda Sanitarium and Hospital was renamed Nichol Hall. It currently houses the School of Public Health and the School of Allied Health Professions.



14. Cottages on the hill

Three of five cottages built circa 1900 on the hill's summit survive. Each cottage comprises four rooms and a bathroom. They have broad windows that extend to the floor; and verandas where, in the early days, patients were rolled out to rest in the fresh air. The cottages—which over the years have served as maternity wards and guest, student, and faculty housing—are now utilized as offices.



15. Campus Hill Church

The second church built on campus was completed in 1937. The Campus Hill Church—a cream-colored stucco structure with Spanish arches and a red-tile roof—was dedicated in 1938 on New Year's Day. Percy T. Magan, president of the College of Medical Evangelists, preached the sermon entitled “What Mean Ye by These Stones?” The Campus Hill Church has been in continuous use since 1938 and is home to an active congregation.



16. First National Bank of Loma Linda

The first and only Seventh-day Adventist bank was established in 1929 and served a growing community until 1935. National banks were allowed to issue their own currency; and during its six-year existence, the Loma Linda Bank issued \$71,870 of its own currency in \$5, \$10, and \$20 denominations. The bank operated throughout the Great Depression. At the close of 1934, the bank had assets totaling more than \$344,000. The well-constructed building, located on Anderson Street near University Court, today houses businesses and offices operated under the auspices of Loma Linda University Foundation.



17. Site of the Loma Linda train station

In 1905 Loma Linda was on the main line of the Southern Pacific Railway. Trains stopped four-to-six times a day at the station, located just north of and below the hill. Patients were met at the station and transported free of charge to the sanitarium by horse-drawn surreys or automobiles. Patients also had the option of climbing the 119 steps to the top of the hill. The station washed away in the flood of San Timoteo Creek in 1916. It was rebuilt, survived the 1927 flood, and then burned down in the early 1960s. By then the trains no longer stopped in Loma Linda.

The path of history now stretches into the future, continuing to fulfill the destiny that divine Providence and its founders envisioned a century ago.

THE ACADEMIC PROCESSION

The Commencement Marshals
with the University Mace and Batons

The Chancellor's Party

Members of the University's Board of Trustees

Loma Linda University Adventist Health Sciences Center (LLUAHSC) Corporate Officers

The Faculty of the School

The Candidates for Degrees

THE MACE. Traditionally the ceremonial mace represents the authority vested in the highest officer of a governing body. In an educational institution, the authority symbolized by the mace derives from respect for the authority of knowledge and for the rights and value of the individual. Thus, the leader of an academic community assumes the obligation and challenge to ensure for its members a climate conducive to growth in knowledge and grace.

The construction of the ceremonial mace of Loma Linda University evokes further ideas. Its two metals, bronze and aluminum, suggest the value of lessons both ancient and contemporary. Rather than lying prone, an instrument to be wielded, this mace stands upright in celebration of the free human spirit. Its open construction implies free exposure to questions, ideas, and conflict. The eight vertical supporting elements (at three points bound together as for strength and stability in unity) uphold a graceful oval that points outward to the universe, the province of inquiry.

Within the oval, the University seal appears to float unfettered. The staff of Aesculapius on the left represents all fields of the healing arts and sciences. The broken sword on the right implies mercy in the sense of selflessness and restraint from acts and attitudes of self-aggrandizement and destructiveness. The open book symbolizes God the Word as the basis for all truth. The lighted torch suggests the illuminating power of knowledge and the University's central purpose of forwarding and perpetuating good through the enlightened, searching, caring mind and conscience of the individual.

Carrying the University mace and batons, the University commencement marshal and associate marshals precede the chancellor's party, members of the board, LLUAHSC corporate officers, faculty of the school, and candidates for degrees. Loma Linda University's colors—gold and purple—are represented in the marshals' gold-colored gowns trimmed with purple velvet.



The chancellor's party includes participants identified in the program, as well as University administrators, school deans, and LLUAHSC officers.

University administration—B. Lyn Behrens, president; Richard H. Hart, chancellor; Lisa M. Beardsley, vice chancellor for academic affairs; W. Augustus Cheatham, vice chancellor for public affairs; David P. Harris, vice chancellor for information systems; Kevin J. Lang, chief financial officer/treasurer; J. Lynn Martell, vice chancellor for advancement; Leslie N. Pollard, special assistant to the chancellor for diversity; Verlon W. Strauss, vice chancellor for financial affairs; Barry L. Taylor, vice chancellor for research affairs; Ricky F. Williams, assistant vice chancellor for student services; Gerald R. Winslow, vice chancellor for spiritual life and wholeness.

Deans of the schools—Ronald L. Carter, School of Science and Technology*; Avis J. Erieson, School of Pharmacy*; Charles J. Goodacre, School of Dentistry; H. Roger Hadley, School of Medicine; Helen E. King, School of Nursing; James L. Kyle II, School of Public Health; Craig R. Jackson, School of Allied Health Professions; David L. Taylor, Faculty of Religion*; Anthony J. Zuccarelli, Graduate School*.

Other LLUAHSC officers—Kenneth J. Breyer, assistant vice president; Brian Bull, corporate secretary; Raul Castillo, assistant vice president; Jerry Daly, assistant vice president; Elizabeth J. Dickinson, senior vice president for patient care services; Gerald A. Ellis, senior vice president for health care administration; Edward L. Field, assistant financial officer; Ruthita Fike, executive vice president for hospital affairs; Daniel E. Fontoura, assistant financial officer; Robert W. Frost, assistant financial officer; H. Roger Hadley, executive vice president for medical affairs; Richard Hergert, vice president for information systems for health ministries; Mark L. Hubbard, senior vice president for human resource management and risk management; L. Orlando Huggins, assistant financial officer/controller; Michael H. Jackson, senior vice president for strategic planning/governmental relations/community outreach; George E. Johnston, assistant vice president; Linda Mason, compliance officer/privacy officer; Steven L. Mohr, assistant financial officer; Lizette O. Norton, assistant vice president; Richard Peverini, senior vice president for clinical faculty; Zareh Sarrafian, senior vice president; Melvin Sauder, vice president for health care business development; David Wren, senior vice president for faculty practice.

*Interim dean

SIGNIFICANCE OF ACADEMIC REGALIA

ORIGINS. The origins of academic dress date back to the twelfth and thirteenth centuries. The ordinary dress of the scholar, whether student or teacher, was the dress of a cleric. Long gowns were worn and may have been necessary for warmth in unheated buildings. A statute of the University of Coimbra in 1321 required that all “Doctors, Licentiates, and Bachelors” wear gowns. In England, in the second half of the fourteenth century, the statutes of certain colleges forbade “excess in apparel” and prescribed the wearing of a long gown. In the days of Henry VIII of England, Oxford and Cambridge first began prescribing a definite academic dress. The assignment of colors to signify certain faculties was to be a much later development—in the late nineteenth century—and one which was to be standardized only in the United States. European institutions have always had great diversity in their specifications of academic dress. In contrast, American colleges and universities opted for a definite system that all might follow. The American Council on Education periodically reviews and updates the code for academic costumes for American universities.

COLORS. Gowns for the bachelor’s or master’s degrees are untrimmed. For the doctor’s degree, the gown is faced down the front with black velvet; three bars of velvet are used across the sleeves. These facings and crossbars may be of velvet of the color distinctive of the discipline to which the degree pertains. Red, one of the traditional colors of the church, went to theology. Green, the color of medieval herbs, was adopted for medicine; and olive, because it was so close to green, was given to pharmacy. Golden yellow, standing for the wealth that scientific research has produced, was assigned to the sciences.

The hoods are lined with the official color or colors of the college or university conferring the degree; more than one color is shown by division of the field color in a variety of ways. The color of the binding or edging of the hood indicates the subject to which the degree pertains.

The colors associated with the different disciplines are as follows:

Arts, Letters, Humanities	White
Business	Brown
Dentistry	Lilac
Education	Light Blue
Law	Purple
Medicine	Green
Nursing	Apricot
Pharmacy	Olive Green
Philosophy	Dark Blue
Physical Therapy	Teal
Public Health	Salmon Pink
Science	Golden Yellow
Social Work	Citron
Theology	Scarlet

Excerpted from E. Sullivan (1997)
An Academic Costume Code and an Academic Ceremony Guide ©



THE SPEAKERS

H. ROGER HADLEY
Dean, School of Medicine, Loma Linda University
Executive Vice President for Medical Affairs
Loma Linda University Adventist Health Sciences Center

H. Roger Hadley was born in Glendale, California. He attended both elementary and high school at Glendale Academy, where he graduated in 1969. After completing two years at Loma Linda University, La Sierra campus, he was accepted into the University's School of Medicine in an experimental accelerated program. He earned the B.S. and M.D. degrees from Loma Linda University in 1974—five years after graduating from high school. During the next five years he was a resident in surgery at Loma Linda University Medical Center, becoming board certified in that specialty in 1981. In 1983 he completed a urology residency at the University of California, Los Angeles (UCLA), followed by a one-year fellowship in female urology and urodynamics at that same institution. His student and resident journey was not limited to the United States but included studies abroad—Saigon, Vietnam; Davos, Switzerland; Athens, Greece; and Edinburgh, Scotland.

After completing his fellowship program in 1984, Dr. Hadley returned to Loma Linda University's School of Medicine as a full-time faculty member. In 1990 he was appointed head of the Division of Urology, and in 1991 he achieved the rank of professor of surgery. Drawing from his expertise in his chosen discipline, he has authored more than seventy articles in professional journals and has written more than twenty chapters in medical textbooks. He served as director of the Loma Linda University Urology Residency Program and as president of Loma Linda University Health Care until 2003, when he assumed broader University responsibilities as executive vice president for medical affairs and dean of the School of Medicine.

Dr. Hadley enjoys a number of extracurricular activities: snow and water skiing, house boating at Lake Powell, golfing, solving crossword puzzles, photography, and storytelling with projected pictures.

Dr. Hadley is married to the former Donna Olson, whom he met while interning on the unit where she worked as a cardiac surgery intensive care nurse. They were married the following year. They have three sons—the oldest of whom, as a member of the class of 2005, is a fourth-generation alumnus of Loma Linda University School of Medicine.

Dr. Hadley will deliver his address at the Conferring of Degrees for the School of Medicine.



CHARLES N. BERTOLAMI

Dean, School of Dentistry, University of California at San Francisco

Charles Bertolami is both chair of the Department of Oral and Maxillofacial Surgery and dean of the School of Dentistry at the University of California, San Francisco. He completed the D.D.S. degree program summa cum laude at Ohio State University in 1974. Five years later he earned the D.Med.Sc. degree in oral biology from Harvard University. After graduating from Harvard, he completed a residency in oral and maxillofacial surgery at Massachusetts General Hospital, where he served as chief resident from 1979 to 1980.

Between 1980-1983 Dr. Bertolami taught at the University of Connecticut. In 1983 he returned to Harvard, where he taught until 1989. Later in 1989 he relocated to the West Coast after being appointed chair of the Department of Oral and Maxillofacial Surgery at University of California, Los Angeles (UCLA). During his six years at UCLA he advanced through the academic and administrative ranks to end his tenure at this institution as professor and chief of dental services at the UCLA Medical Center and associate dean for faculty affairs. He was named dean of the University of California at San Francisco School of Dentistry in 1995.

Dr. Bertolami's academic and administrative excellence has been noted and honored by both his alma maters and other institutions. He was named Distinguished Alumnus by Ohio State University College of Dentistry in 1996 and by Harvard School of Dental Medicine in 2000. He was the Percy T. Phillips Visiting Professor at Columbia University in 2002, and in 2003 he was the recipient of the Paul Goldhaber Award of the Harvard School of Dental Medicine. He has also been honored as the Vincent A. Barr Visiting Professor at the University of Kentucky.

Dr. Bertolami's professional expertise has been utilized broadly and extensively. He co-chaired the NIH Workshop on Biomimetics, Tissue Engineering, and Biomaterials (1998); chaired the American Association of Dental Schools Committee on Future Faculty (1998-1999); and co-chaired the NIDCR Blue Ribbon Panel on Research Training and Career Development (2000). He served as president of the American Association for Dental Research (2002-2003) and as a member of the Harvard University Overseers' Visiting Committee for the Faculty of Medicine and Dental Medicine. He currently serves on numerous advisory and editorial boards, including the *Journal of Oral and Maxillofacial Surgery*.

In addition to his administrative responsibilities, Dr. Bertolami still retains strong research interests in—and has published many book chapters and original articles related to—orofacial tissue repair, the biochemistry of hyaluronic acid, and the use of sodium hyaluronate in the treatment of mandibular disorders.

Dr. Bertolami is a diplomate of the American Board of Oral and Maxillofacial Surgeons, and a fellow of the American College of Dentists and of the International College of Dentists.

Dr. Bertolami will deliver his address at the Conferring of Degrees for the School of Dentistry.



NIELS-ERIK A. ANDREASEN
President, Andrews University
Berrien Springs, Michigan

Niels-Erik Andreasen was born in Fredensborg, Denmark, and lived in his native country until he was nineteen years of age. In 1963 upon completion of his undergraduate education at Newbold College in Bracknell, England, he was awarded a bachelor's degree in religion and history. Immigrating to the United States in 1963, he continued his education at Andrews University—earning a Bachelor of Divinity degree in 1965 and a Master of Arts degree in biblical studies in 1966. In 1971 he completed a doctoral degree in religious studies at Vanderbilt University in Nashville, Tennessee.

Since 1970 Dr. Andreasen has served Seventh-day Adventist higher education in various capacities. From 1970 to 1977 he taught religion at Pacific Union College in Angwin, California; and spent two years as a visiting lecturer at Avondale College in Australia. For thirteen years (1977-1990) he served the then two campuses of Loma Linda University in various capacities, including dean of its La Sierra campus School of Religion. In 1990 he was appointed president of Walla Walla College (College Place, Washington), where he served until July 1994, when he was named the fifth president of Andrews University.

Dr. Andreasen is the author of three books—*The Christian Use of Time*, *The Old Testament Sabbath*, and *Rest and Redemption*. He has also written numerous articles and reviews. He is a member of the Society of Biblical Literature and the Biblical Research Committee.

Dr. Andreasen is married to the former Demetra Lougani of Athens, Greece. They have one adult son, Michael; a daughter-in-law, Marie; and a grandson, Caleb.

Dr. Andreasen will deliver his address at the Conferring of Degrees for the Graduate School.



CHARLIE JO MORGAN
President/CEO, Health Matters Unlimited

Charlie Jo Morgan received her nursing diploma from Glendale Sanitarium and Hospital (1959) and earned degrees in nursing from Andrews University (B.S. 1975) and Loma Linda University (M.S. 1978). Her Ph.D. degree, received in 1988 from Claremont Graduate University, comprised four qualifying areas: higher education, economics of higher education, curriculum, and nursing education administration. She completed certificate programs in public health nursing (1976), adult education (1976), community college instruction (1978), and community college health service (1978).

Dr. Morgan's professional experience has included hospital and college nursing in Arizona and California; and teaching in Michigan and at Loma Linda University (1991-2004), San Bernardino Valley College, and three San Diego area colleges (Point Loma College, San Diego Community College, and Southwestern Community College). Among her areas of expertise are medical-surgical, obstetrics, critical care, gerontology, physical assessment, research methods, and professional issues. From 1984 to 1991 she served as chair of the Department of Nursing at Oakwood College in Huntsville, Alabama.

Not content to limit her contributions in the field of nursing to classroom and hospital environments, Dr. Morgan has been active in professional organizations for more than two decades—serving as member-at-large, committee member, or officer in the National League for Nursing, Sigma Theta Tau (international honor society for nursing), the National Black Nurses' Association, and the American Association of Critical-Care Nurses. In 1989 she realized a long-time dream when the Association of Black Seventh-day Adventist Nurses—an organization she co-founded—became a reality. She has served this organization as vice president since 1991 without interruption. Colleges, hospitals, the county of San Bernardino, and law offices specializing in medical-legal practice have utilized her consulting and program-development expertise.

Dr. Morgan remains on the contributing edge of her profession through presentations at professional meetings and continuing-education seminars and workshops conducted not only to help nurses meet licensing and certification requirements but also to fuel their passion for the profession. Her community outreach endeavors include seminars and presentations on a wide variety of topics: nutrition, diabetes prevention, heart-health maintenance, wellness, immunity, cultural competence, positive-relationship building, communication, and conflict resolution. She has written or co-authored grants that have been funded to address challenges facing black-infant health, the need for individualized pathways programs that enhance success in learning, the need to expand diversity and opportunities in nursing education, and obesity prevention in children (in progress). She also tutors prospective nursing students, judges science fairs, participates in walk-a-thons, mentors teenage girls, and volunteers at homeless shelters.

The Black Alumni of Loma Linda and La Sierra Universities (BALL) honored Dr. Morgan in 2003 for distinguished service on behalf of that organization and for four decades of modeling academic and professional excellence. In recognition of her efforts to forward the ideal of ethnic and racial diversity, and in appreciation of her support of the academic development of students from underrepresented populations, Loma Linda University School of Nursing established the Charlie Jo Morgan Scholarship Endowment in 2004.

Dr. Morgan will deliver her address at the Conferring of Degrees for the School of Nursing.



JOSÉ VICENTE ROJAS

Director, Volunteer Ministries and the Office of Young Adult Ministries
North American Division of Seventh-day Adventists

José Vicente Rojas serves as director of Volunteer Ministries for the North American Division (NAD) of the Seventh-day Adventist Church. Operating out of the Office of the Secretariat, the Adventist Volunteer Ministries network brings together church institutional and support organizations in an effort to maximize their potential as they address common outreach endeavors—such as student missions, task-force missions, literacy programs, community projects, Bible work, campaign evangelism, etc.

Elder Rojas also serves as NAD director of the Office of Young Adult Ministries. Through the Connect Network, more than 260 young-adult ministry organizations are now actively linked on-line at <<http://www.saltyfish.net/>>. He firmly believes that the Old Testament prophecy recorded in Joel 2:28 is being fulfilled. Pointing to more than 56,000 young people and adults in North America mobilized for outreach evangelism, he sees the visionaries and dreamers of whom Joel spoke. His goals for the next five years include an even broader network of missionary volunteers of all ages, experiencing the power of God as they serve in communities around the world.

Not only is Elder Rojas an accomplished musician and recording artist, but he also is a popular author and passionate preacher of the gospel. He is an alumnus of Loma Linda University, where he earned a bachelor's and a master's degree in religion; and is the recipient of an honorary doctorate awarded by Southwestern Adventist University in Keene, Texas. His numerous awards and honors include the Maryland Governor's Citation for leadership in community action. In 1996 he was privileged to carry the official Olympic torch into Washington, DC, as the flame made its journey en route to the Atlanta, Georgia, Olympic games.

Although he serves on many committees and is active in numerous organizations, Elder Rojas finds time to serve as a member of the Alliance for Youth, a national organization founded by former U.S. secretary of state, General Colin Powell. This association resulted in more than 100 Adventist tutoring sites for underprivileged children in 32 cities in the United States, Canada, and Bermuda. Elder Rojas has also served as a consultant to the White House, assisting two United States presidents with domestic policy initiatives for humanitarian leadership in this country.

Elder Rojas and his wife, Ruthie, have four teen and preteen children—Veronica, Angelica, Gabriel, and Maria—who are perhaps their ultimate qualification for working with youth.

Elder Rojas will deliver his address at the Conferring of Degrees for the School of Allied Health Professions.



GWENDOLYN W. FOSTER
Health and Fitness Czar, City of Philadelphia
Member, Board of Trustees, Loma Linda University

Gwendolyn W. Foster has been a health enthusiast for more than two decades. Her desire to improve health outcomes for African Americans and other populations led her to Loma Linda University, where she obtained a Master of Science in Public Health degree in 1977 and where she currently serves as a member of the Board of Trustees.

Mrs. Foster served as health director for the 26,000 constituents of the Allegheny East Conference of Seventh-day Adventists. During her tenure in this position, she developed Fitness for Life—a pioneering lifestyle re-education program; annual conditioning camps; and a certification program that prepares nonhealth professionals to become effective healthy-lifestyle mentors. From 1994 to 1999 she hosted the “Fitness for Life” radio talk show, which aired on station WHAT in Philadelphia.

Through the General Conference of Seventh-day Adventists, Mrs. Foster has also served as health consultant to the world field. Her goal is to help make optimum health a reality worldwide; and in this pursuit she has worked diligently to educate people regarding destructive lifestyle choices. At the core of her strategy for improving public health are basic health principles that, if followed, have been proven to prevent, reduce, or reverse many chronic health problems—such as obesity, hypertension, and diabetes.

In February 2000, Mayor John F. Street of Philadelphia established the “Fun, Fit, & Free!” health initiative and appointed Mrs. Foster health and fitness czar for the city. Since being appointed to this position, she has established a number of health initiatives: “Dine Out on Healthy Street,” “Fun, Fit, & Free! See What You Can Be,” “Fun, Fit, & Free! Health Journey,” “Fun, Fit, & Free! COOKS,” “Philadelphia’s Fun, Fit, & Free! Festival,” “The Mayor’s Walk on Healthy Street,” “76 TONS OF FUN,” “The 2002 New Year’s Resolution for Health,” and the “Fun, Fit, & Free!” weekly Time Warner Cable television program.

Most recently Mrs. Foster has joined forces with Bally Total Fitness Gym, Philadelphia Sports Club, VIGORworks Gym, Bonne Sante Gym, and Curves fitness and weight-loss centers to offer a special health initiative—“Health Journey,” a series of ten-week, fictitious trips that offers numerous fitness opportunities, cooking classes, and health-education opportunities. This initiative has already attracted the attention of the federal government.

Mrs. Foster brings to the city of Philadelphia the same level of enthusiasm for health that she has exhibited throughout her career helping people around the world. She is working to realize her vision of Philadelphia as the healthiest city in the nation.

Mrs. Foster will deliver her address at the Conferring of Degrees for the School of Public Health.



THE UNIVERSITY HONOREES

DAVID R. WILLIAMS

Professor of Sociology, Department of Sociology

Senior Research Scientist, Survey Research Center, Institute for Social Research

University of Michigan

David R. Williams—an internationally recognized expert in the area of race, religion, and health—earned degrees from Caribbean Union College (B.Th.), Andrews University (M.Div.), and Loma Linda University (M.P.H.); and completed the Ph.D. degree in sociology from the University of Michigan.

Currently Dr. Williams serves as the Harold W. Cruse Collegiate Professor of Sociology, senior research scientist at the Institute for Social Research, professor of epidemiology in the School of Public Health, and faculty associate in the Center for AfroAmerican and African Studies and the Program for Research on Black Americans. His professional resume includes assistant then associate professor of sociology and of public health, as well as director of undergraduate studies in sociology at Yale University (1986-1992); research and teaching assistant at the University of Michigan (1983-1986); public health educator at Battle Creek Adventist Hospital (1980-1982); and high school teacher at St. Lucia Academy (1971-1972).

Dr. Williams—whose research has investigated social influences on health, and the trends and determinants of socioeconomic and racial differences in mental and physical health—has made important contributions that enhance understanding of the complex ways in which race, racism, and socioeconomic status combine to affect health patterns over the course of one's lifetime. His conceptual and empirical work has identified specific mechanisms by which racism—at both the societal and individual levels—can affect health. He is also interested in ways in which religious involvement can affect health. His research findings have been reported in national print and broadcast media.

Dr. Williams has authored more than 100 scholarly articles that have been published in professional journals and edited collections. He also occasionally writes for the *Adventist Review* and *Message* magazine. He has served as a member on the editorial boards of six journals and has reviewed manuscripts for forty-five other journals.

Dr. Williams has received a number of awards and honors, including: the Decade of Behavior Research Award (2004); elected member of the Institute of Medicine of the National Academy of Sciences (2001); Investigator Award in Health Policy Research from the Robert Wood Johnson Foundation (1995); and School Alumnus of the Year for Loma Linda University School of Public Health (1994).

Dr. Williams has been actively involved in developing health policy at the national level, having served on the Department of Health and Human Services National Committee on Vital and Health Statistics (chaired the subcommittee on Minority and Other Special Populations) and the National Science Foundation's Board of Overseers for the General Social Survey. He has been a member of five panels for the National Academy of Sciences/Institute of Medicine; and has held elected and appointed positions in professional organizations, including the American Sociological Association and the American Public Health Association. He currently serves on the board of directors for Academy Health and is a member of the MacArthur Foundation's Research Network on Socioeconomic Status and Health. He also serves on the board of Atlantic Union College.

Dr. Williams is married to the former Opal Reid. They are the parents of two daughters, Delia and Alysia.

In recognition of his achievements that enhance the reputation of his alma mater and forward our mission—To make man whole—Loma Linda University is pleased to name Dr. Williams UNIVERSITY ALUMNUS OF THE YEAR. This title will be conferred on him at the Conferring of Degrees for the School of Public Health.



HELEN E. KING
Dean, School of Nursing, Loma Linda University

Helen E. King earned the B.S. degree in nursing (1959) and the M.S. degree in nursing and teaching (1965) from Loma Linda University; and the Ph.D. degree in biology from Boston University (1973). Even before beginning her doctoral studies, she was honored in 1968 as one of the “outstanding young women of America.” Her professional experience includes a rich history of professional nursing, teaching, and administrative experience: hospital nurse at Loma Linda Sanitarium and Hospital and at White Memorial Hospital; teacher at Southern Missionary College, Loma Linda University, Boston University School of Nursing, Boston College School of Nursing, and Atlantic Union College; research consultant at New England Memorial Hospital; and administrator at Atlantic Union College and Loma Linda University.

In 1981 Dr. King was appointed dean of the Loma Linda University School of Nursing. She brought to this position personal devotion to the comprehensive mission of the University and unwavering commitment to excellence in the art and science of nursing. During a tenure of nearly a quarter of a century as dean—the longest in the history of the University’s nine schools—her steady and capable leadership has remained grounded in the principles upon which the School of Nursing was founded a century ago.

Under her leadership, the school has grown substantially in size and complexity. The 2004-2005 academic year marked the highest enrollment in the school’s 100-year history. Included among the programs that have been added to the standard nursing curriculum during the past quarter of a century are accelerated and intensive B.S. degree programs designed for students with nonnursing baccalaureate preparation, an M.S. degree program that offers a number of advanced-practice clinical and administration options, programs that combine nursing with master’s level study in public health and biomedical and clinical ethics, and a Ph.D. degree program in nursing. In addition, off-campus degree programs are now offered in Thailand, Argentina, and Japan.

Dr. King’s legacy of leadership also includes development of endowed funds for scholarships and research; a faculty roster of which 50 percent have completed doctoral degrees and many are conducting funded research; growing international outreach; and the active recruitment of graduates, who enhance the school’s reputation for academic and professional excellence.

In addition to administrative oversight of the School of Nursing, Dr. King has served the broader academic community and the nursing profession as a member of major University committees, boards, and councils; chair and member of the American Association of Colleges of Nursing taskforces and commissions; member of the American Nurses’ Association, National League for Nursing, Association of Seventh-day Adventist Nurses, and Sigma Theta Tau (international honor society for nursing); and international site visitor on behalf of the Adventist Accrediting Association.

On June 30, 2005, Dr. King will retire as dean of the School of Nursing. In recognition of and appreciation for her dedication, loyalty, and commitment to our historic mission—To make man whole—the University is pleased to honor her for nearly a quarter of a century of service. The UNIVERSITY DISTINGUISHED SERVICE AWARD will be presented to Dr. King at the Conferring of Degrees for the School of Nursing.



FORESTERS
(formerly the Independent Order of Foresters)

Since the mid-1970s, the philanthropic arm of the Foresters has been a strong and consistent supporter of cancer research conducted at Loma Linda University and Medical Center. The organization has focused its fundraising efforts primarily on research and treatment associated with the Proton Treatment Center, under the leadership of Drs. James and Jerry Slater.

As individual members, organizational branches, or as an international entity, the Foresters have for many years demonstrated their unwavering support of volunteer-driven activities, both large and small—including annual golf tournaments, auctions, and other fundraising events—that benefit cancer research and treatment.

For more than three decades, the leaders of the Foresters' Region for Southern California and Hawai'i have made Loma Linda University a focus of their philanthropy. They are to be particularly commended for their generous financial partnership with this institution.

The beneficence of the Foresters is a reflection of the organization's cooperative and collaborative efforts to benefit families and communities. Their long history of liberality to Loma Linda University has resulted in contributions totaling more than \$1 million—including a significant research endowment and funding for other causes. Their generosity has been a sustaining force in cancer research conducted in the Foresters' Cancer Research Laboratory in the Chan Shun Pavilion, as well as research conducted by other University investigators who use the laboratory's sophisticated equipment and resources in pursuit of cancer treatments that save lives and diminish suffering.

Loma Linda University is pleased to express its appreciation to the Foresters for their generous financial gifts to this institution, and for their long-term dedication to and enthusiastic support of our mission—To make man whole.

The UNIVERSITY DISTINGUISHED HUMANITARIAN AWARD will be presented to the Foresters at the Conferring of Degrees for the School of Medicine.



JON ROBERTSON

Conductor and Music Director, Redlands Symphony Orchestra
Chair, Music Department, University of California at Los Angeles

Dr. Robertson is now in his twenty-second successful season as conductor and music director of the Redlands Symphony Orchestra, which has grown remarkably under his baton. The extraordinary quality of this orchestra is attributable to the blend of the devotion he has to his musicians, combined with his unique vision and genius for music-making. Dr. Robertson has served as professor of conducting/director of orchestras at the University of California, Los Angeles, since 1992; and as chair of its Music Department since 1993.

Dr. Robertson's career as a concert pianist began at 9 years of age with his debut in Town Hall, New York. He continued to give concerts throughout Europe and South America. Although his degrees are in piano performance, he also studied choral conducting with Abraham Kaplan at Juilliard, and orchestra conducting with Richard Pittman of the New England Conservatory. He later traveled to Sweden and East Germany to study under Maestro Herbert Blomstedt, former conductor and music director of the San Francisco Symphony.

In 1972 Dr. Robertson became conductor and music director of the Thayer Conservatory of Music Orchestra. From 1979 to 1987 he served as conductor and music director of the Kristiansand Symphony Orchestra in Norway. He made his debut with the San Francisco Symphony at Stern Grove as guest conductor. He received critical acclaim and was invited for return engagements during their subscription series in San Francisco's Davies Hall.

Among other appearances, Dr. Robertson has conducted in China with the Beijing Central Philharmonic, in Sweden with the Gävle Symphony, with the American Symphony Orchestra of New York, and with the Cairo Symphony Orchestra. After appearing with the Armenian Philharmonic Orchestra, they named him Principal Guest Conductor.

Dr. Robertson has served two years on the National Endowment of the Arts orchestral review panel, and three years as a panelist for the California Arts Council Organizational Grants and Touring panel. He has also served on the boards of directors of the Association of California Symphony Orchestras and the San Bernardino Arts Association.

Loma Linda University acknowledges with appreciation the contributions made by Dr. Robertson that breathe life into this community, "send light into our hearts," and enhance us by expressing the inexpressible. The University is pleased to present to Dr. Robertson the DOCTOR OF HUMANE LETTERS degree. This degree will be awarded at the Conferring of Degrees for the Graduate School.



THE SCHOOL HONOREES

D. JEANNE ANDREWS

Associate Professor, Department of Pediatrics
School of Medicine, Loma Linda University

D. Jeanne Andrews was born in China while her parents were serving there as missionaries. After completing premedicine course work at Washington Missionary College (now Columbia Union College), she entered the College of Medical Evangelists (now Loma Linda University School of Medicine) and completed the M.D. degree in 1950. A rotating internship at Glendale Sanitarium was followed by a residency in pediatrics at the White Memorial Hospital in Los Angeles.

In 1955 Dr. Andrews began her fifty-year tenure of service in the Department of Pediatrics at Loma Linda University. She was a beloved pediatrician to countless children across three generations, as well as a consummate teacher and mentor to medical students and residents alike. In a tribute to Dr. Andrews at her retirement celebration, Dr. B. Lyn Behrens—current president of Loma Linda University, who was one of her residents—reminisced about Dr. Andrews' personal care for those with whom she worked. Dr. Andrews often included students in family activities and fun vacations with her three children. An unassuming, competent, compassionate woman, Dr. Andrews was a proactive educator and mentor who was respected by all who trained by her side. A number of students were able to continue their medical education because of the generous support of Dr. Andrews and her husband, Walter Willumson.

Perhaps the most unrecognized of Dr. Andrews' noteworthy attributes was her commitment to life-long learning and her expertise in the field of behavioral and developmental pediatrics. Little was known about this area of pediatrics when she was completing her training. She spent countless hours in continuing education over the years in order to keep abreast of the latest evaluation and treatment for behavior problems and learning disabilities in children. At a time when few pediatricians knew how to manage these challenges, Dr. Andrews became a strong advocate for the appropriate evaluation and treatment of children. Medical providers for children with behavior and learning problems continued to be in such short supply that even after Dr. Andrews retired in the mid-1990s, she continued until her complete retirement in May 2004 to teach pediatric residents—without remuneration—how to advocate and care for these patients.

Dr. Andrews has lived the mission of Loma Linda University—To make man whole. Through her personal service and the ongoing service of those whom she helped educate over the past half century, she continued the healing and teaching ministry of Christ and brought health and hope to countless children and their families.

In recognition of half a century of commitment and dedication to the mission of Loma Linda University, the School of Medicine is pleased to present to Dr. Andrews the SCHOOL DISTINGUISHED SERVICE AWARD. This award will be presented at the Conferring of Degrees for the School of Medicine.



E. CLIFFORD HERRMANN

Associate Professor, Department of Biochemistry and Microbiology
School of Medicine, Loma Linda University

E. Clifford Herrmann earned the B.S. degree in chemistry at Andrews University (Berrien Springs, Michigan); and the M.S. and Ph.D. degrees in biochemistry at Virginia Polytechnic Institute and State University (Blacksburg, Virginia). After completing postdoctoral training at the University of Texas M. D. Anderson Hospital and Tumor Institute, he joined the School of Medicine faculty in 1971 as assistant professor of biochemistry. He was promoted to associate professor of biochemistry in 1976, and served as acting chair of the Department of Biochemistry from 2000 to 2001.

Soon after his arrival at Loma Linda University, Dr. Herrmann was assigned to teach the biochemistry course for dental hygiene and allied health professions students. He subsequently added a major portion of the lectures in dental biochemistry to his instructional load. For many years he coordinated the graduate biochemical techniques courses and continues to coordinate the dental biochemistry courses in the department. He is especially skilled in drawing students out in small-group settings, such as the freshman medical course in evidence-based medicine. His lectures in both dental and medical biochemistry were memorable because of his use of everyday materials, such as carbonated soft drinks and popping corn, to demonstrate some of the arcane concepts of enzymology. In the research laboratory he was known as a meticulous experimentalist who could “make things work.”

Dr. Herrmann’s extensive involvement in teaching dental students at Loma Linda University led naturally to interaction with colleagues in professional organizations. At the national level he served as secretary, chair-elect, and chair in the Biochemistry and Nutrition and the Oral Biology sections of the American Dental Education Association (ADEA).

In 1999 Dr. Herrmann was elected to membership in Omicron Kappa Upsilon, the national dental honor society—a distinction reserved for individuals who, though not members of the dental profession, have made outstanding contributions to dentistry. He is also a member of the American Association of Oral Biologists, Phi Lambda Upsilon (the honorary chemical society), the Protein Society, and the American Society for Biochemistry and Molecular Biology.

Dr. Herrmann brought to Loma Linda University the patience, thoroughness, industry, and good-natured practicality developed during his boyhood on the Canadian prairies. These qualities have permeated his service to his students, colleagues, church, and community.

In recognition of his creative and careful administrative teaching and research skills and achievements, which have advanced the mission of Loma Linda University—To make man whole—the School of Medicine is pleased to honor Dr. Herrmann for more than three decades of illustrious service that has resonated throughout his profession. The SCHOOL DISTINGUISHED SERVICE AWARD will be presented to Dr. Herrmann at the Conferring of Degrees for the School of Medicine.



JOHN LEONORA

Professor, Department of Physiology and Pharmacology
School of Medicine, Loma Linda University

After completing undergraduate and graduate education at the University of Wisconsin, John Leonora earned the Ph.D. degree in endocrinology in 1957. From 1957 to 1959 Dr. Leonora was a postdoctoral fellow in the National Institutes of Health at the University of Wisconsin. He then joined the faculty of the endocrinology research group in the Department of Medicine on the Los Angeles campus of the College of Medical Evangelists. In 1963 he moved to the Department of Physiology on the Loma Linda campus of the School of Medicine (now Loma Linda University). His significant contributions to and potential for enhancing the teaching and research program of the department were soon recognized, and in 1970 he was appointed co-chair of what is now the Department of Physiology and Pharmacology.

For more than twenty years, Dr. Leonora has devoted a major portion of his academic life at Loma Linda University to the teaching program in physiology, particularly for medical students. He has been responsible for the education of an entire generation of medical students in the great vistas and fascinating intricacies of the human endocrine system. He endeavored to make the students' experience of the course as positive and effectively organized as possible, given its multifaculty structure. In a recent annual report, he noted that the University's "concept of Wholeness is fundamental to physiology. The optimal function of the body—physiologically, behaviorally, and intellectually—is dependent on the integration of neuro-endocrine mechanisms. I emphasize to the students that this marvelous design is a consequence of Divine creation."

Dr. Leonora is personally dedicated to assisting and counseling students on an individual basis. He encourages them to recognize and apply their unique abilities as they seek to comprehend the wonders and mysteries of physiology. As a member of academic review and planning committees and of the School of Medicine Executive Committee, he is an able and compassionate advocate for students.

Dr. Leonora's research on pituitary hormones—conducted before coming to Loma Linda University—laid an excellent foundation for the major thrust at this University of his pioneering investigation on a new endocrine axis. In collaboration with Dr. Ralph Steinman (Loma Linda University School of Dentistry) and later Dr. Jean-Marc Tièche, he demonstrated that the parotid glands, in addition to their salivary function, produce a hormone that stimulates fluid flow in teeth. Further findings indicated that production of the parotid hormone is regulated by the hypothalamus. Development of an assay for the parotid hormone facilitated the discovery that a high-sucrose diet can significantly decrease the basal secretion of parotid hormone. Leonora, Steinman, and Tièche's results suggest that a hormonally controlled mechanism of dentinal fluid movement may play a systemic, protective role against the bacterial acidogenic challenge to teeth. Recent studies show that dentin apposition is also significantly depressed by a high-sucrose diet or following removal of the parotid gland. Investigators in Finland have complemented some of the ground-breaking work by Dr. Leonora and his research colleagues in this area. Other investigators have also enthusiastically joined with him in characterizing the parotid hormone, using the techniques of molecular biology and biochemistry. Only time will reveal the significance to human health of Dr. Leonora's bold insights and creative leadership in exploring this new frontier in endocrinology.

Dr. Leonora, at the age of 72, recently published a significant paper in the *Journal of Biological Chemistry*.

For his devoted service in the education of a generation of medical students and for his innovative contributions to endocrine physiology, the School of Medicine is pleased to honor Dr. Leonora as the recipient of the SCHOOL DISTINGUISHED SERVICE AWARD. This award will be presented at the Conferring of Degrees for the School of Medicine.



GEORGE MAEDA

Emeritus Associate Professor, Department of Physiology and Pharmacology
School of Medicine, Loma Linda University

George Maeda—a native of Hawai'i—developed an early interest in electronics. This interest led to his pursuit of a B.S. degree in radio engineering, which he earned in 1957 from Tri State University. His M.S. and Ph.D. degrees in physiology were completed at Loma Linda University.

Utilizing his earlier training and research in electronics and physiology, Dr. Maeda has served as the primary teacher of neurophysiology for medical, dental, and graduate students at Loma Linda University for more than twenty years. His lectures and conferences have always demonstrated a keen appreciation of the needs of students and have been characterized by thorough preparation and good organization. He has taken a keen interest in the individual concerns of students and has provided many hours of personal counseling.

Dr. Maeda's background in electronic engineering laid a foundation for his unique contribution to the Department of Physiology and Pharmacology. He has been a leader in the implementation of the electronic acquisition and computer-based recording and analysis of experimental data in laboratory experiences for students. Dr. Maeda typifies those dedicated faculty who, for their entire academic career, serve students in the School of Medicine and in the other schools of the University.

His unusually broad expertise in electronics and in physiology have made him a sought-after co-investigator in a variety of significant research projects with other faculty in both basic and clinical science areas. He has joined with fellow neurophysiologists in innovative studies of the electrical activity generated by key areas of the brain—enhancing our understanding of both basic brain function and narcotic drug action in the brain. He has brought his expertise to collaborative research related to the understanding of certain key functions in the muscular walls of blood vessels. In recent years he has joined his basic science insights with the clinical perspectives of neurosurgeons and neurologists in the search for greater understanding of Parkinson's disease and its treatment. Most recently he has participated in studies on the effects of proton radiation on the nervous system. For many years he maintained an electronics workshop, where he fabricated and repaired electronic instruments. Other researchers were able to do cutting-edge research because of his electronics expertise.

Dr. Maeda exemplifies the basic-science faculty member who seeks to bring the results of his research originality and expertise not only to the classroom but also to the patient.

For his commitment to and creative participation in the education of students for service to people and their Creator, and in recognition of twenty-five years of service to this University, the School of Medicine is pleased to honor Dr. Maeda. The SCHOOL DISTINGUISHED SERVICE AWARD will be presented to him at the Conferring of Degrees for the School of Medicine.



ROBERT L. SCHULTZ

Professor, Department of Pathology and Human Anatomy
School of Medicine, Loma Linda University

Robert L. Schultz earned the B.A. degree in biology in 1951 and the M.A. degree in zoology in 1953 from Walla Walla College. He completed the Ph.D. degree in anatomy from the University of California, Los Angeles (UCLA) in 1957 while working part of this time as a teaching assistant in gross anatomy at UCLA and the College of Medical Evangelists concurrently.

Dr. Schultz began his academic career at Loma Linda University as a technician and has held continuous appointments in the Department of Anatomy at this University for more than fifty-two years. He has served as director of the electron microscopy facility, which has contributed to many collaborative research projects in the basic and clinical sciences; and as acting chair (1991-1994) before the Department of Anatomy became a division within the Department of Human Pathology and Anatomy.

As a researcher and mentor at this University, Dr. Schultz has been an active participant in the anatomy programs of the Graduate School and of the Schools of Medicine and Dentistry. His research has focused on various aspects of the nervous system: electron microscopy of neurons, neuroglia, meninges, cerebral blood vessels, and the pineal gland. The major emphasis of his research has been improving procedures for fixation of nervous tissue.

Dr. Schultz has mentored numerous M.S. and Ph.D. degree students; and out of these efforts, numerous papers have been presented at professional meetings. He has also had fifty-three papers published in peer-reviewed journals. He holds membership in the American Association of Anatomists and in the Association of American Medical Colleges on Educational Affairs.

As a teacher, Dr. Schultz has been the major contributor to and coordinator of the medical histology course for the School of Medicine. For his teaching endeavors, he was honored by the Walter E. Macpherson Society as the 1977 recipient of the Basic Science Teacher of the Year Award. He has been an inspiration to faculty, staff, and students. For the past seven years, even as he has battled multiple myeloma, he has continued with his obligations to the institution.

For his commitment to the education of students, excellence in research administration, and a lifetime of dedication and service to Loma Linda University School of Medicine, the school is pleased to honor Dr. Schultz. The SCHOOL DISTINGUISHED SERVICE AWARD will be presented to Dr. Schultz at the Conferring of Degrees for the School of Medicine.



CHARLES W. SLATTERY

Emeritus Professor, Department of Biochemistry and Microbiology
School of Medicine, Loma Linda University

Charles W. Slattery—who was born in Colorado and reared and educated in Nebraska—embodies the solid, practical, down-to-earth qualities of a native of the American midwest. He earned the B.A. degree in chemistry at Union College (Lincoln, Nebraska), and the M.S. and Ph.D. degrees in physical chemistry at the University of Nebraska (Lincoln). Subsequent postdoctoral study (1967-1970) was completed at the Massachusetts Institute of Technology.

Dr. Slattery served on the faculty of Atlantic Union College (South Lancaster, Massachusetts) from 1963 to 1968. In the summer of 1970, he joined the faculty of the Department of Biochemistry in the School of Medicine at Loma Linda University. He served the department as chair from 1983 to 1999. In 2003 he retired as professor, the rank he attained twenty-seven years ago; he currently enjoys the distinction of emeritus status.

Dr. Slattery was an enthusiastic teacher, administrator, and innovator in the educational programs for graduate, dental, and medical students. He supported the curriculum revision for freshman medical students—introduced by Dr. George Lessard—that replaced the obsolete bench-laboratory exercises with problem-based learning carried out in small groups. This change has evolved into the evidence-based medicine class that covers a wide range of case-study topics.

Together with Dr. Richard Beltz, Dr. Slattery organized and taught the biochemistry of disease—an honors course for freshman medical students whose undergraduate education had provided a background in chemistry and biology beyond that provided by the minimum premedical curriculum. He regularly taught courses for graduate students, including special topics and advanced topics courses in his field of research expertise. He also mentored several students who were awarded doctoral degrees in biochemistry.

While at the Massachusetts Institute of Technology, Dr. Slattery became fascinated with the unique properties of milk proteins. He continued his research on bovine milk proteins when he relocated to Loma Linda University. Later he extended his investigations to include human milk proteins. His studies have led to extensive publications in refereed journals, and he has presented the results of his studies at national and international conferences.

In addition to the service recorded on faculty annual reports, Dr. Slattery was tireless, kindly, and sensitive in nurturing students, department staff, junior faculty, and colleagues. He never gave up on anyone.

For his commitment to and creative participation in the education of students for service to mankind and their Creator, and in recognition of more than three decades of noteworthy service to this University, the Graduate School and the School of Medicine are each pleased to honor Dr. Slattery as the recipient of the SCHOOL DISTINGUISHED SERVICE AWARD. One award will be presented at the Conferring of Degrees for the School of Medicine; a second will be presented at the Graduate School Conferring of Degrees.



DOUGLASS B. ROBERTS
Professor, Department of Restorative Dentistry
School of Dentistry, Loma Linda University

Douglass B. Roberts completed the D.D.S. degree (1966) and the M.S. degree (1972) in restorative dentistry. His hallmark has always been his exemplary clinical skills and focus on clinical excellence. Identified early in his dental education as a clinician of unusual talent, he was recruited to join the faculty as a part-time instructor shortly after graduating from dental school. At age 31, Dr. Roberts became chair of the Department of Restorative Dentistry, where he continued to develop a program with a focus on clinical excellence.

Dr. Roberts has been actively involved in numerous professional organizations, including the Academy of General Dentistry, the American Academy of Crown and Bridge Prosthodontics, the Academy of Operative Dentistry, and the Academy of Gold Foil Operators. In 1983 he was elected to membership in Omicron Kappa Upsilon (national dental honor society).

During his thirty-nine years as a member of the School of Dentistry faculty, he has been asked to fill numerous positions—including department chair on two different occasions, for a total of nineteen years. In spite of his busy schedule, Dr. Roberts has remained a committed Christian dentist who has balanced family, church, department-administration, teaching, and private-practice interactions.

Both as a teacher and administrator, Dr. Roberts has had a strong influence on the development of the School of Dentistry's curriculum and the shaping of its clinical services. He has been a member of the Curriculum Committee and an active voice for the issues and concerns of general dentistry in clinical education.

In addition to his professional accomplishments, Dr. Roberts is known as a committed Christian who seeks to model in his personal life the University's mission to further the healing and teaching ministry of Jesus—To make man whole. He finds pleasure in teaching and is noted for his careful critique of clinical work and his personal attention to students who seek his help.

The School of Dentistry recognizes the contributions of Dr. Roberts—characterized always by excellence—in teaching and administration; appreciates his wise voice of reason on committees and advisory bodies; and is grateful for nearly four decades of dedicated service.

In recognition of the high regard in which he is held in this community of academic dentists and practitioners, Dr. Roberts will receive the SCHOOL DISTINGUISHED SERVICE AWARD at the Conferring of Degrees for the School of Dentistry.



LANE C. THOMSEN

Professor, Department of Oral Diagnosis, Radiology, and Pathology
School of Dentistry, Loma Linda University

Lane Thomsen earned the D.D.S. degree from Loma Linda University in 1965. After practicing general dentistry for five years in Rio Dell, California, Dr. Thomsen received a clinical fellowship from the American Cancer Society and was accepted into the graduate program in oral pathology at Loma Linda University, where he completed the M.S. degree in 1974.

Dr. Thomsen is an exemplary teacher who always maintains excellent rapport with students and exhibits vigorous interest in improving their learning. His facility for making complex material interesting and entertaining is legendary; so, understandably, his course evaluations by students are consistently very high.

Dr. Thomsen has received numerous honors and awards and has been actively involved in many professional organizations, including the Western Society of Teachers of Oral Pathology, Organization of Teachers of Oral Diagnosis, and Southern California Academy of Oral Pathology. He is a member of Omicron Kappa Upsilon (national dental honor society) and served on the Council of Faculty of the American Dental Education Association. He also has served two terms—sixteen years— as chair of the Department of Oral Diagnosis, Radiology, and Pathology.

In addition to his heavy teaching load in the School of Dentistry, Dr. Thomsen has presented more than 100 lectures, symposia, and continuing education courses. His recent scholarly activity includes development of an on-line course for dental hygienists and dental hygiene students preparing for the National Board Examination.

Because of his thirty-five years of unwavering dedication and commitment to the programs of his *alma mater*, and in recognition of his continued support and contributions, the SCHOOL DISTINGUISHED SERVICE AWARD will be presented to Dr. Thomsen at the Conferring of Degrees for the School of Dentistry.



THE PROGRAMS

SCHOOL OF MEDICINE

May twenty-nine, eight-thirty o'clock, Campus Mall



PRELUDE Loma Linda Academy Symphonic Band
PHILIP R. BINKLEY, conductor

America, the Beautiful . . . Samuel Augustus Ward (arr. Carmen Dragon)

ACADEMIC PROCESSION RONALD L. CARTER, University Commencement Marshal, leading
JEFFREY D. CAO, BRUCE L. CURRIE, MARILYN M. HERRMANN,
J. LAMONT MURDOCH, Associate Marshals, assisting

The audience is requested to clear the aisles and remain seated.

Pomp and Circumstance March No. 1 . . . *Sir Edward Elgar*
(arr. Clare Grundman)

INVOCATION KIMBERLY N. ARLEDGE
Class Pastor

WELCOME RICHARD H. HART, Chancellor of the University

CENTENNIAL LITANY THE CHANCELLOR

PRESENTATION LAWRENCE C. SOWERS, Associate Dean for Basic Science Faculty
OF AWARDS RICARDO L. PEVERINI, Associate Dean for Clinical Faculty
THE CHANCELLOR
LISA M. BEARDSLEY, Vice Chancellor for Academic Affairs

INTRODUCTION JEFFREY D. COLBURN
OF SPEAKER Chancellor's Award Recipient

ADDRESS H. ROGER HADLEY
Dean, School of Medicine, Loma Linda University
Executive Vice President for Medical Affairs
Loma Linda University Adventist Health Sciences Center

A HUNDRED YEARS AGO

CLASS RESPONSE MERRICK R. LOPEZ
President of the Class

CONFERRING OF DEGREES THE CHANCELLOR

AWARDING OF DIPLOMAS THE DEAN
LEONARD S. WERNER, Associate Dean for Educational Affairs
HENRY H. LAMBERTON, Associate Dean for Student Affairs
TAMARA T. SHANKEL, Assistant Dean for Clinical Education

CHARGE TO THE CLASS PHILIP J. ROOS
Vice Chair, Department of Medicine

THE PHYSICIAN'S OATH JEFFREY D. CAO
President, Alumni Association

BENEDICTION EDMUND Y. K. KO
Secretary-Treasurer of the Class

ACADEMIC RECESSION The Thunderer . . . *John Philip Sousa*
(arr. and adp. Keith Brion and Loras Schissel)

The audience is requested to clear the aisles and remain seated during the recession.

Each graduate will receive a DVD of the ceremony and a color photograph of the graduate taken at the time of diploma presentation. To minimize distracting others during the ceremony, guests are requested to observe the following picture-taking courtesies: *Please do not* —

- use a flash or additional lighting;
- walk in the main aisles or in front of the platform;
- stand, except very briefly, in the audience line of vision.

COMMISSIONING OF MILITARY OFFICERS Immediately following the recessional, this ceremony will take place in the Thompson Lobby of the Wong Kerlee International Conference Center.

CANDIDATES FOR DEGREES

The listing of a candidate's name in the commencement program is presumptive evidence of graduation but is not to be regarded as conclusive.

DOCTOR OF MEDICINE

Ejigayehu G. Abate B.S. University of Redlands 1999	Kevin Anthony Codorniz B.S. Pacific Union College 2001
Robin P. Abdelmalik B.S. University of California, San Diego 2001	Jeffrey David Colburn B.S. Walla Walla College 2001
Adina Floarea Achiriloaie B.S. University of California, Los Angeles 2000	Jason Michael Bradley Couture B.S. California State University, San Bernardino 2001
Olivia N. Alexander B.S. Oakwood College 2001	Shawn Daniel Ryan Couture B.S. California State University, San Bernardino 2001
Rachel Diane Allen B.A. Point Loma Nazarene University 2001	Piali Dattaray B.A. University of California, Riverside 2001
Daniel Ntim Amponsah B.S. Oakwood College 2001	B.S. University of California, Riverside 2001
Sarah Se-Un Anh B.A. Wellesley College 2000	Jennifer Lauren Daugharthy B.S. Pepperdine University 2001
Ara M. Anspikian B.A. Fresno Pacific University 2000	Charles D. Deakins B.S. Walla Walla College 1997
Kimberly N. Arledge B.S. University of California, Riverside 2001	M.S. Walla Walla College 2001
Evelyn Baghdasraian B.S. University of Southern California 2001	Christina Noel Deckert B.S. California State University, Fullerton 2000
Kristen Rae Bandy B.S. University of California, San Diego 1997	Michele L. DeKorte B.S. Whitworth College 1999
Ryan Anthony Barenchi B.S. Pacific Union College 2000	Sharon Y. Do B.A. University of California, Berkeley 2000
Nathan R. Beget B.S. George Fox University 1999	John Jeewan Ehum B.S. University of California, San Diego 1999
Deborah Lee Behringer B.S. California State Polytechnic University, Pomona 1999	Kathleen Marilyn Elliott B.S. Andrews University 1999
Lillibeth Calma Mendoza Beltran B.S. Loma Linda University AH 2000	Thomas Ryan Falter B.S. Loma Linda University SN 1997
Sandra Jean Bosman B.S. California State University, Fresno 2000	Irving Moore Feldkamp IV, DEC B.S. La Sierra University 2000
Stephen Douglas Boyd B.S.E. Walla Walla College 1985	Zurisadai Franco B.A. Southwestern Adventist University 2001
Daniel Elliott Buxton B.S. Pacific Union College 2000	Shawna Lynn Freeman B.S. Union College 2001
Claire Cecile Caldwell B.S. The Master's College and Seminary 2001	Leigh Asayo Fujishige B.A. University of Hawaii, Manoa 1998
Jacqueline Jeanette Carter B.S. Pacific Union College 2001	Ryan Andrew Gaines B.A. Midamerica Nazarene University 1999
Katrina Carter B.S. California State University, San Bernardino 2000	Mercedes Isabel Garcia B.S. Southwestern Adventist University 2000
Rainer Quijada Chan B.S.M.T. Pacific Union College 1999	Jonathan Bruce Geach B.S. Southern Adventist University 2001
Miriam Ching-Hui Cho B.S. Andrews University 2001	Leia Davis Gill B.S. The University of Texas at Dallas 2001
Thomas Won Cho, DEC B.A. University of California, Berkeley 1999	Telfer Nolan Griffith B.S. Northwest Nazarene University 2001
	Kristan David Guenterberg B.S. Walla Walla College 2001

Allison Ranae Hadley
B.A. Andrews University 2000

David Alan Hadley
Pacific Union College

Brenden Joseph Hanks
Pacific Union College

Ryan Anthony Hayton
B.S. Walla Walla College 2001

Jason Thomas Hedrick
B.A. Miami University Oxford 2001
B.S. Miami University Oxford 2001

James Adam Hill
B.S. University of Nevada, Reno 2000

Timothy Bradley Hill
Pacific Union College

Matthew Torres Hoerth
B.S. Westmont College 2001

Victor Y. Hong
B.A. University of California, Berkeley 2000

Annette Larie Hoover
B.S. Southern Adventist University 2001

Justin Edward Horricks
Andrews University

Victoria Jui-Yun Hsu
B.A. University of California, Berkeley 2001

Christian John Hunter
B.S. Stephen F. Austin State University 1996

Krishna Nichole Igo
B.S. La Sierra University 2000

Katsuya Andrew Iizuka
B.S. Walla Walla College 2001

Philip N. Isenberg
B.A. University of Washington, Seattle 2001

Kimberly Christina Izvernari
B.S. La Sierra University 2000

Forrest Craig Jellison
B.S. Pacific Union College 2000

Julie Ann Jensen
B.A. Union College 2001
B.S. Union College 2001

Stephane Eric Johnson
B.S. Southwestern Adventist University 1997
M.S. University of Montreal 2000

Sidney Georg Jones
B.S. La Sierra University 2001

Kimmy May Jong
B.A. University of California, Berkeley 2000

Kevin Allen Jutzy
B.S. La Sierra University 2000

Julie Kay Armantrout Kasarjian
B.A. University of California, Irvine 1989
B.S. University of California, Irvine 1989
PH.D. Loma Linda University GS 2003

William J. Kaufold
B.S. Whitworth College 1997
M.P.H. University of California, Los Angeles 2000

Tamara Christine Kelley
B.S. Gonzaga University 1999

Jonathan G. Kelling
B.S. University of California, Santa Barbara 1996
M.A. University of California, Santa Barbara 2000

Jared C. Kelstrom
B.A. Walla Walla College 2001

Dan D. Kemper
B.S. Boise State University 2000

James Inbok Kim
B.A. Rutgers University-New Brunswick 1999

Trisha Meekyoung Kim
B.A. University of California, Berkeley 2000

Cassandra Noel King
B.A. Southwestern Adventist University 2001

Walter F. Klein
B.S. Walla Walla College 2001

Edmund Yuey Kun Ko
B.S. Pacific Union College 2001

Jason R. Koelewyn
B.A. Dordt College 1999

Steven A. Kohtz
B.S.M.B.B. University of Idaho 2001

Philantha Sue-Hwa Kon
B.A. Pomona College 1993
M.A. University of Southern California 1997
PH.D. University of Southern California 2001

Brian Gun Lee
B.S. La Sierra University 2000

Brian Wu Lee
B.A. Andrews University 1999

Brian P. Lemkuil
B.S. Calvin College 2001

Dean Edward Leocádio
B.A. Roger Williams University 1996
M.A. Northern Arizona University 2000

Geesnell Bautista Lim
B.S. Andrews University 1998

Mark Ruslan Logvin
B.S. University of California, Davis 2000

Merrick Reyes Lopez
B.S. Walla Walla College 1998

Meriam Shawky Makary-Botros
B.S. La Sierra University 2000

Johnny Chun-Wei Mao
B.S. University of California, Davis 1997

Lisa Renee Marinelli
B.S. University of California, San Diego 2001

Daniel J. Martin
B.S. California State University, San Bernardino 2001

Peter Noel Mattar
B.S. University of California, Los Angeles 2000
M.P.H. Loma Linda University PH 2004

David Timothy Maxwell
B.S. Walla Walla College 2000

Heather Rose-Anne McKenzie
B.S. Oakwood College 1999

Grant N. Medefind
B.S. Westmont College 1999

Kevin Caesar Menes
B.S. University of California, Riverside 1999

Tara Jolene Milliron
B.S. Belmont University 2001

Julie Ann Moyers
B.A. Columbia Union College 1993
B.S. Columbia Union College 1993

Jukes P. Namm
B.S. University of Michigan, Ann Arbor 2001

Joshua Paul Nickerson
B.A. Carroll College 2001

Lesli Izella Nicolay
B.S. Walla Walla College 2000

Melissa Ann Noone
B.S. California Polytechnic State University, San Luis Obispo 2001

Luis Manuel Ocegüera
B.B.A. La Sierra University 1998
M.S. Loma Linda University GS 2001

Andrew Hyun-Whan Oh, DEC
B.S. Pacific Union College 2000

Adwoa Serwah Opoku-Boateng
B.S. Oakwood College 2000

Benjamin Jae-Wook Park
B.S. Andrews University 2001

Sanjay Earl Patra
B.S. McMaster University 1998
B.A. McMaster University 1999

Peter Hoang Phan
B.S. University of Washington, Seattle 2001

Julie Christine Phillips
B.S. University of California, Riverside 1999

Samuel Morris Randolph
B.S. Columbia Union College 1999

Philis D. Ransom
B.S. Andrews University 2001

Barth B. Riedel
B.A. Seattle Pacific University 2000

Craig Hampton Robson
B.S. Arizona State University, Main Campus 2001

Rodney David Rodrigo
B.H.S. University of Miami 1996
M.S. Loma Linda University GS 2001

Karl Philip Roos
B.S.E Walla Walla College 2001

Dannette Aguirre Saguan
B.A. Southern Adventist University 1997

Ahmad Zakariya Samady
B.S. University of California, San Diego 1999

Mark Daniel Sandoval
B.A. Southern Adventist University 2001

Thomas Donald Schilling
B.S. Azusa Pacific University 1995
M.P.H. Loma Linda University PH 1998

Jonathan Lee Schwab
B.A. University of Colorado, Boulder 1999

Rachel Joanne Selle
B.A. Augsburg College 2001

Atarah Eve Martin Sidey
B.A. Concordia University 1999

Stacey Lynne Snowden
B.S. Pacific Lutheran University 2000
B.S.P.E. Pacific Lutheran University 2000

Joel R. Spencer
B.A. Northwest Nazarene University 2000

Serena Roxane Srikureja
B.S. Pacific Union College 2000

Thomas Allan Stewart
B.A. Walla Walla College 2001

Roderick R. Stuart
B.A. University of California, Riverside 1997

Kevin Ki-Chul Suk
B.S. University of California, Los Angeles 2001

Christine Hyohyoung Sun
B.S. State University of New York, Binghamton 2001

Nicole Marian Swanston
B.S. Oakwood College 2001

William Chi Ta
B.S. University of California, Santa Barbara 1996

Vanessa Loreley Talbot Hadley
B.A. California State University, San Bernardino 2000

Michael Steven Than
B.S. Loma Linda University AH 2001

Roman Jacob Trochanowski
B.S. Canadian University College 1998
M.S. Loma Linda University GS 2000

Robin Yumiko Vance
B.S. Pacific Union College 2000

Chad Jeremy Vercio
B.A. Walla Walla College 2001

Raul E. Villanueva
B.S. Universidad Adventista de las Antillas 1998

Aileen Jo Vitangcol
B.S. Andrews University 2001

David M. Volkov
B.S. Oregon State University 2001

Jeanine Lynn Walter
B.S. Pacific Union College 2000

Jennifer Deanne Ward
B.S. Pacific Union College 2001

Sarah Marie Wegner
B.S. Andrews University 2001

Danielle Marie West
B.S. Andrews University 2001

Erin Christi Wisbey
B.A. Union College 2001

Jana Jo Wold
B.S. Westmont College 2001

Kamal Ronald McGregor Woods
B.S. Andrews University 2001

Jena Sachie Worley
B.S. Walla Walla College 2001

Melissa S. Wysong
B.A. Southern Adventist University 2001

Jane Soyoung Yoon
B.S. Pacific Union College 2001

THE PHYSICIAN'S OATH

LOMA LINDA UNIVERSITY SCHOOL OF MEDICINE

Before God these things I do promise:

In the acceptance of my sacred calling,

I will dedicate my life to the furtherance of Jesus Christ's healing and teaching ministry.

I will give to my teachers the respect and gratitude which is their due. I will impart to those who follow me the knowledge and experience that I have gained.

The wholeness of my patient will be my first consideration.

Acting as a good steward of the resources of society and of the talents granted me, I will endeavor to reflect God's mercy and compassion by caring for the lonely, the poor, the suffering, and those who are dying.

I will maintain the utmost respect for human life. I will not use my medical knowledge contrary to the laws of humanity. I will respect the rights and decisions of my patients.

I will hold in confidence all secrets committed to my keeping in the practice of my calling.

I will lead my life and practice my art with purity and honor; abstaining from immorality myself, I will not lead others into moral wrongdoing.

May God's kingdom, His healing power, and His glory be experienced by those whom I serve; and may they be made known in my life, in proportion as I am faithful to this oath.

AWARDS

Wil Alexander Whole-Person Care Award: MARK D. SANDOVAL.

Alpha Omega Alpha Honor Society: KIMBERLY N. ARLEDGE, JEFFREY D. COLBURN, ZURISADAI R. FRANCO, LEIGH A. FUJISHIGE, RYAN A. GAINES, TELFER N. GRIFFITH, KRISTAN D. GUENTERBERG, ALLISON R. HADLEY, CHRISTIAN J. HUNTER, PHILIP N. ISENBERG, JULIE K. KASARJIAN, WILLIAM J. KAUFOLD, DAN D. KEMPER, CASSANDRA N. KING, STEVEN A. KOHTZ, BRIAN G. LEE, DAVID T. MAXWELL, JULIE A. MOYERS, SANJAY E. PATRA, SAMUEL M. RANDOLPH, CRAIG H. ROBSON, AHMAD Z. SAMADY, RACHEL J. SELLE, JOEL R. SPENCER, KEVIN K. C. SUK.

Alumni Association of Loma Linda University Herber Award: EVELYN BAGHDASRAIAN, MERCEDES I. GARCIA, KRISTAN D. GUENTERBERG, PETER N. MATTAR, STACEY L. SNOWDEN, JENA S. WORLEY, MELISSA S. WYSONG.

Chancellor's Award: JEFFREY D. COLBURN.

Leonard Marmor Award: KIMBERLY N. ARLEDGE.

Department Awards

Anesthesiology (Bernard Briggs): TELFER N. GRIFFITH.

Emergency Medicine:

Society for Academic Emergency Medicine: SAMUEL M. RANDOLPH.

Distinguished Student in Emergency Medicine: CLAIRE C. CALDWELL.

Family Medicine (Walter Ordelheide): STEVEN A. KOHTZ.

Gynecology/Obstetrics (Harold Ziprick): RACHEL J. SELLE.

Medicine:

Daniel D. Comstock—ALLISON R. HADLEY.

Donald E. Griggs—PETER H. PHAN.

Harold J. Hoxie—CHRISTIAN J. HUNTER.

Varner J. Johns, Jr.—KEVIN A. CODORNIZ.

Neurology (Guy Hunt): JANA J. WOLD.

Pediatrics (Robert Chinnock): AILEEN J. VITANGCOL.

Psychiatry (Benjamin Kovitz): ARA M. ANSPIKIAN.

Surgery (David Hinshaw): KRISTAN D. GUENTERBERG.

Urology (Roger Barnes): MERRICK R. LOPEZ.

SCHOOL OF DENTISTRY

May twenty-nine, five o'clock, Campus Mall



PRELUDE Loma Linda Academy Symphonic Band
PHILIP R. BINKLEY, conductor

America, the Beautiful . . . *Samuel Augustus Ward (arr. Carmen Dragon)*

ACADEMIC PROCESSION RONALD L. CARTER, University Commencement Marshal, leading
JONI E. STEPHENS, DANIEL E. TAN, DAVID L. TAYLOR,
R. BRUCE WALTER, Associate Marshals, assisting

The audience is requested to clear the aisles and remain seated.

Pomp and Circumstance March No. 1 . . . *Sir Edward Elgar*
(arr. Clare Grundman)

INVOCATION JOHN M. WHITTAKER
Professor, Department of Restorative Dentistry

MUSICAL SELECTION SHEILA ALEXANDER AND MICHELLE CARRICK, Graduating Dental Hygienists
The Voice of Truth . . . *Casting Crowns*

WELCOME RICHARD H. HART, Chancellor of the University

CENTENNIAL LITANY THE CHANCELLOR

PRESENTATION CHARLES J. GOODACRE, Dean of the School

OF AWARDS THE CHANCELLOR

LISA M. BEARDSLEY, Vice Chancellor for Academic Affairs . . .

INTRODUCTION THE DEAN

OF SPEAKER

ADDRESS CHARLES N. BERTOLAMI
Dean, School of Dentistry
University of California at San Francisco

THREE WORDS

RESPONSE FOR GRADUATES JACQUELINE BECERRA
President of the Class of Graduating Dental Hygienists

JEFF HENNEBERG
President of the Class of Graduating Dentists

PRAYER OF DEDICATION BENJAMIN BOWEN
Chaplain of the Class of Graduating Dentists

CONFERRING OF DEGREES THE CHANCELLOR

AWARDING OF DIPLOMAS THE DEAN
RONALD J. DAILEY, Associate Dean for Academic Affairs
KRIS WILKINS, Chair, Department of Dental Hygiene
WILLIAM M. HOOKER, Associate Dean for Student Affairs
JAMES D. KETTERING, Associate Dean for Advanced Education

PLEDGE TO DENTISTRY ROBERT L. KINZER
Professor, Department of Restorative Dentistry

MUSICAL SELECTION HEATHER PUNDT
Graduating Dentist

Call on Jesus . . . *Nicole C. Mullen*

BENEDICTION SHELLY WITHERS
Assistant Professor, Department of Dental Hygiene

ACADEMIC RECESSION The Thunderer . . . *John Philip Sousa*
(arr. and adp. *Keith Brion and Loras Schissel*)

The audience is requested to clear the aisles and remain seated during the recession.

Each graduate will receive a DVD of the ceremony and a color photograph taken at the time of diploma presentation. Guests are asked to reserve picture taking and videotaping until after the ceremony. The Alumni Association is sponsoring a reception on the Campus Mall for all graduates and their families immediately following the program.

CANDIDATES FOR DEGREES

The listing of a candidate's name in the commencement program is presumptive evidence of graduation but is not to be regarded as conclusive.

BACHELOR OF SCIENCE

DENTAL HYGIENE

Tracy Renee Adams, magna cum laude
Sheila Virginia Alexander
Jennifer Alido
Jeannette Lisa Aviles
Jacqueline Andrea Becerra, cum laude
Arlen Blandino-Edson
Jennifer Ruth Breslin
Cressie Doreen Bridges, cum laude
Tylea Michyl Brown
Claudine Love Caballero, cum laude
Michelle Renee Carrick, cum laude
Ryan Michelle Cochrane
Gina Louise Cuccia
Ruth Elizabeth Dearen
Nicole Noel Emmanuele
Amy Elaine Ferrence, cum laude
Bekki Briana Griffin, cum laude
Crystal Dawn Gryte
Kelly Rene Harklerode, summa cum laude
Dana Renee Hawkins, summa cum laude
Brandy Lauren Holder

Jenae Nicole Kerbs, cum laude
Lindsay Jean Landis, magna cum laude
Janice Meng Chieh Lee, cum laude
Kelli Ann Lyon, magna cum laude
Patrice Kay Lyon, cum laude
Frances Marie Madore, cum laude
Stacey Cathleen Malcomson, cum laude
Daniela Mihai, cum laude
Hyun Joo Park
Jana Lynn Price
Esther Paz Rodriguez
Jung Im Kimberly Romero, cum laude
Rebecca Lillian Sanchez, cum laude
Lindsay Rae Saunders, summa cum laude
Allison Marie Sease
Lynnette Tillman, cum laude
Kristin Jeanette Van Ryn
Emily Sue Vixie, cum laude
Melissa Meri Vogt, cum laude
Lorrie Sue Turner
Debra Ann Zawistowski

DOCTOR OF DENTAL SURGERY

DENTISTRY

Roger M. Anderson
Walla Walla College
Shawn Ray Anderson
Brigham Young University
Daniel Martin Appel
B.A. Southern Adventist University 1998
Heidi Joy Apuy
Pacific Union College
Kevin Daniel Biederman
B.A. Taylor University Upland 2001
Jeffery S. Bobst
B.A. California State University, San Bernardino 2001
Andrew J. Bock
B.A. University of Colorado, Boulder 2001
Colleen Janette Bock
B.A. Pacific Union College 2001
Benjamin Ross Bowen
Walla Walla College
Norman Eric Carter
B.S. La Sierra University 2000

Yong Suk Cha
B.A. La Sierra University 2000
Kenneth George Chen
B.A. Rollins College 2000
Rebecca H. Cho
B.S. La Sierra University 2001
Daniel Jisung Chung
B.A. Andrews University 1999
Robert W. Clark III
B.A. University of Colorado, Boulder 2000
Nolan E. Coon
B.S. Loma Linda University AH 1997
M.P.T. Loma Linda University AH 1997
Brian Joseph DiMeo
B.S. United States Military Academy 1995
Jennifer Yuying Fang
B.. La Sierra University 2000
M.B.A. La Sierra University 2001
Trevor Vincent Fraser
B.S. Oakwood College 2001

William Quenton Gebeau
B.A. Pepperdine University 1999

Belen Giordano
B.S. Southern Adventist University 2000

Jesse Guzman
B.S. Boise State University 1998

Amy Beth Hauschildt
B.A. Taylor University Upland 2001

Jeff James Henneberg
B.A. La Sierra University 1993

Heidi Lynn Hill
B.A. Pacific Union College 2001

Jeanice Estelle Jones
B.S. Pacific Union College 2001

Helene Janine Julius
B.S. Oakwood College 2000
M.P.H. Loma Linda University PH 2001

Young Joon Jun
B.S. University of California, San Diego 2001

Julie Michelle Kellogg
B.S. Walla Walla College 2001

Albert Seong Kim
Pacific Union College

Jongsung Kim
B.A. Pacific Union College 1997

Kevin Young-Hwan Kim
B.A. Pacific Union College 2001

Mina Kim
B.S. State University of New York, Binghamton 1995

Chris Eunsuk Ko
La Sierra University

Seth David Latimer
Pacific Union College

Anzela Suh Lee
B.A. La Sierra University 1999

Caryn Hongmi Lee
B.S. La Sierra University 2001

Jai Goo Lee
B.A. Sahmyook University 1992

Scott Kyung-jin Lee
B.A. Pacific Union College 1997

Andrea Renae Lewis
B.A. Southwestern Adventist University 2000

Warren David Libby
B.A. Walla Walla College 2001

Alexander Lobaina
B.S. University of Puerto Rico, Mayaguez 1999

Jason R. Melashenko
California State University, San Bernardino

Aaron Dean Molen
B.S. Brigham Young University 2001

Kham V. Nguyen
B.S. University of California, Davis 1996

Seok Whan Nichols
B.S. University of Nevada, Reno 1997
B.S. University of Nevada, Reno 2000

Joo Young Oh
B.S. Pacific Union College 1997
M.S. Korea University KS 2000

Jennifer Cecilia Ohsie
B.S. Pacific Union College 2001

Brian Scott Palmer
Weber State University

Linda K. Park
B.A. Southern Adventist University 2001

Marcus Andrew Paulson
B.A. Azusa Pacific University 2001

Benjamin Perez Febles
B.S. Universidad Adventista de las Antillas 2001

Crystal Ann Edmister Pierson
B.A. Southern Adventist University 2001

Zachary LeRoy Potts
B.S. Pacific Union College 2001

Heather René Pundt
B.S. Southwestern Adventist University 2001

Edward Chong Pyo
B.A. La Sierra University 2000

J. Kristian Rapisarda
La Sierra University

Bonnie Jo Retamozo
B.A. Southwestern Adventist University 1995
B.S. Southwestern Adventist University 1996

Daniel Arturo Rivera
B.S. University of Southern California 1999

Enoch Nathan Ross
B.S. Walla Walla College 2000

Kyle Kramer Schmidt
B.S. Seattle University 2000

Robert Gene Schroetlin
B.S. Loma Linda University AH 2000

Stanton Edward Schuler
B.S. Loma Linda University AH 1998

Kenneth R. Sharp
B.S. Southwestern Adventist University 2001

Kevin Kwan-Wook Shim
B.S. Pacific Union College 2001

Michael Joo Yub Shin
B.A. Claremont Mckenna College 1990

Gregory Howard Sprague
B.S. Atlantic Union College 2000

Jung Hwa Suh
B.S. Loma Linda University AH 2000

Bradley John Szutz
La Sierra University

Linda Tang
B.S. La Sierra University 2001

Evan Cory Tillotson
B.S. University of California, San Diego 2002

Holly Nicole Wallstrom
B.S. Pacific Union College 2001

Kim C. Wan
B.A. University of California, Berkeley 2000

Michael Alan Wasemiller
 B.S. Union College 1999
 Antonietta Cortese Waybright
 B.S. Arizona State University, Main Campus 1999
 Brian Jason Wilkinson
 B.S. University of California, Irvine 2001
 Owen E. Wolfgramm
 Utah Valley State College

John Boram Won
 B.A. Pacific Union College 2001
 Serena Sze-Wing Wong
 B.S. Pacific Union College 2001
 Steven C. Yee
 B.S. California State University, San Bernardino 2001

INTERNATIONAL DENTISTRY

*The following will be awarded degrees
 June 2005:*

Khaldoun Attar
 BACHELOR'S EQUIV. University of Damascus 1988
 Tarana Chhatriwala
 B.D.S. University of Mumbai 2000
 Jeong Suk Kim
 D.D.S. Yonsei University 1993
 M.S.D. Yonsei University 1997
 D.Sc. Yonsei University 2000
 Emmanuel Klein
 BACHELOR'S EQUIV. Louis Pasteur University 1993
 Jorge Menendez
 BACHELOR'S EQUIV. Instituto Superior de Ciencias
 Medicas de La Habana 1985
 Mei-Ting Nieh
 D.D.S. Chung Shan Medical and Dental College 1998
 Yuliya Sorkin
 BACHELOR'S EQUIV. Almaty State Institute of
 Medicine 1996
 Pratibha Vegulla
 B.D.S. N.T.R. University of Health Sciences 2001

*The following will be awarded degrees
 December 2005:*

Andres Ricardo Amaya
 TITULO Pontificia University Javeriana 1997
 Jay Rachid Ayass
 B.D.S. Beirut Arab University 2002
 Maya Bassam Bachour
 D.D.S. University of Damascus 2001
 Jae Kwon Bok
 D.D.S. Pusan National University 1992
 M.S.D. Pusan National University 1995
 Omar Gustavo de Oliveira
 CIR. DENT. Universidade Federal do Espirito Santo
 2000
 Rami Salloum
 D.D.S. Al-Baath University 1997
 Elena Sangachhe
 B.D.S. Manipal Academy of Higher Education 2001
 Rosemarie Garcia Sheline
 D.M.D. University of Baguio 2001

PROFESSIONAL CERTIFICATE

DENTAL ANESTHESIOLOGY

Karen Ellen Anderson
 B.A. University of California, Berkeley 1997
 D.D.S. University of Southern California 2002
 Lorenda Lynette Grace, MAR
 D.D.S. Baylor University 1992
 Steven James Karmy
 B.S. Walla Walla College 1998
 D.D.S. Loma Linda University SD 2003

Jerry L. Teague, MAR
 B.S. Abilene Christian University 1976
 Ryan Patrick Watkins
 B.S. La Sierra University 1999
 D.D.S. Loma Linda University SD 2003

ENDODONTICS

Stephen Hwa Paik
B.S. University of California, Los Angeles 1994
D.D.S. Columbia University in the City of New York
1999
Manouchehr Pouresmail
D.D.S. Loma Linda University SD 2003
D.D.S. University of Tehran 1990

Christopher Michael Seehrist
D.D.S. Loma Linda University SD 2000

IMPLANT DENTISTRY

Olivier Henry-Savajol
D.D.S. University of Aix-Marseilles II 2001

Kuo-Yang Liao
D.D.S. Kaohsiung Medical University 1994

ORAL AND MAXILLOFACIAL SURGERY

Thomas Ying
B.S. University of California, Los Angeles 1997
D.D.S. University of Southern California 2001

ORTHODONTICS AND DENTOFACIAL ORTHOPEDICS

Daniel J. Drye
B.S. University of Wisconsin, Madison 1995
D.D.S. Case Western Reserve University 2000

James Isaac Gibson III
B.A. Southern Utah University 1999
D.D.S. Loma Linda University SD 2003

Rehana Khan
B.S.W. Wheelock College 1992
D.D.S. Loma Linda University SD 2002

Carter Alan Lane
B.B.A. Andrews University 1985
D.D.S. Loma Linda University SD 2000

Shawn Paul Pesh
B.S. Walla Walla College 1997
D.D.S. Loma Linda University SD 2001

Gretchen Marie Schnepfer
B.S. Pacific Union College 1999
D.D.S. Loma Linda University SD 2003

PEDIATRIC DENTISTRY

Peter Robert Bond
D.D.S. Loma Linda University SD 1998
Allen Jayakumar Job
B.S. University of Maryland, College Park 1995
M.S. Loma Linda University GS 1998
M.P.H. Loma Linda University PH 1999
D.D.S. Loma Linda University SD 2003

Heather Hoag Lauer
B.S. La Sierra University 1999
D.D.S. Loma Linda University SD 2003

PERIODONTICS

Lung-Cheng Chen
D.D.S. Chung Shan Medical and Dental College 1996

Negar Tabandeh
D.D.S. EQUIV. Azad Open University 1996

PROSTHODONTICS

Jin So Cha
D.D.S. Loma Linda University SD 2002

Maxwell Mostafa Nazari
D.D.S. Esfahan University of Medical Sciences 1992

AWARDS

DENTISTRY

Academic Excellence Gold Award: ANDREW J. BOCK, NORMAN E. CARTER, JULIE M. KELLOGG, SETH D. LATIMER, AARON D. MOLEN, KHAM V. NGUYEN, JOO YOUNG OH, MARCUS A. PAULSON, ROBERT G. SCHROETLIN.

Academic Excellence Silver Award: SHAWN R. ANDERSON, JESSE GUZMAN, YOUNG J. JUN, WARREN D. LIBBY, BRIAN S. PALMER, BONNIE J. RETAMOZO, KYLE K. SCHMIDT, STANTON E. SCHULER, BRADLEY J. SZUTZ.

Academy of General Dentistry Award: GREGORY H. SPRAGUE.

Academy of Operative Dentistry Award: GREGORY H. SPRAGUE.

Alpha Omega Scholastic Award: NORMAN E. CARTER.

Alumni Association Award: HEATHER R. PUNDT.

American Academy of Gold Foil Operators: JEFF J. HENNEBERG.

American Academy of Oral and Maxillofacial Pathology Award: SETH D. LATIMER.

American Academy of Oral and Maxillofacial Radiology Award: KHAM V. NGUYEN.

American Academy of Orofacial Pain Award: ANZELA S. LEE.

American Academy of Pediatric Dentistry Award: SETH D. LATIMER.

American Academy of Periodontology Award: ROBERT J. SCHROETLIN.

American Association of Endodontists Award: SHAWN R. ANDERSON.

American Association of Oral and Maxillofacial Surgeons Award: YOUNG J. JUN.

The American Association of Oral Biologists Award: BONNIE J. RETAMOZO.

American College of Dentists, Southern California Section Award: WARREN D. LIBBY.

American College of Prosthodontists Award: KYLE K. SCHMIDT.

American Dental Society of Anesthesiology Award: ROGER M. ANDERSON.

American Student Dental Association Award: AARON D. MOLEN.

Ben W. Oesterling Award: KENNETH G. CHEN.

Boyko Award for Christ-Like Service in Dentistry Award: CRYSTAL A. EDMISTER, AMY B. HAUSCHILDT.

California Dental Association Award: BRADLEY J. SZUTZ.

Delta Dental Student Leadership Award: MARCUS A. PAULSON.

Dental Foundation of California Scholarships Award: HEIDI J. APUY, JEFF J. HENNEBERG, NORMAN E. CARTER.

Fixed Prosthodontics Department Award: BRADLEY J. SZUTZ.

G. Hartzell & Son Clinician Award: DANIEL A. RIVERA.

Graduate Implant Dentistry Award: ANDREW J. BOCK.

International College of Dentists Award: KYLE K. SCHMIDT.

National Association of Seventh-day Adventist Dentists: JULIE M. KELLOGG.

Chancellor's Award: MARCUS A. PAULSON.

Omicron Kappa Upsilon [national dental honor society]: HEIDI J. APUY, NORMAN E. CARTER, JULIE M. KELLOGG, EMMANUEL KLEIN, SETH D. LATIMER, WARREN D. LIBBY, KHAM V. NGUYEN, MARCUS A. PAULSON, KYLE K. SCHMIDT, ROBERT G. SCHROETLIN, BRADLEY J. SZUTZ.

Oral and Maxillofacial Surgery Department Award: W. QUENTON GEBEAU.

Organization of Teachers of Oral Diagnosis Award: KYLE K. SCHMIDT.

Pierre Fauchard Academy Award: MARCUS A. PAULSON.

Prince Award: JEFF J. HENNEBERG.

Service Learning Award: YONG S. CHA, JENNIFER Y. FANG, TREVOR V. FRASER.
Southern California Academy of Endodontics Award: KHAM V. NGUYEN.
Southern California Academy of Oral Pathology Award: KHAM V. NGUYEN.
Southern California Society of Dentistry for Children Award: HEIDI J. APUY.
Wilfred A. Nation Award: JEFF J. HENNEBERG.

DENTAL HYGIENE

Dean's Award: TRACY R. ADAMS.
Student of the Year Award: LINDSAY J. LANDIS.
Sigma Phi Alpha Honor Society Award: KELLY R. HARKLERODE, LINDSAY J. LANDIS, KELLI A. LYON,
LINDSAY R. SAUNDERS, MELISSA M. VOGT.
Bates Award: GINA L. CUCCIA.
California Dental Hygienists' Association Outstanding Leadership Award: MELISSA M. VOGT.
Clinician's Award: JENAE N. KERBS.
Klooster Award: MICHELLE R. CARRICK.
Middleton Award: CRESSIE R. BRIDGES.
Mitchell Award: JACQUELINE A. BECERRA.
Research Award: KELLI A. LYON, PATRICE K. LYON, DANIELA MIHAI.
Service Learning Award: RYAN M. COCHRANE.
Tri-County Dental Hygienists' Society Award: MELISSA A. VOGT.
Western Society of Periodontology Award: JENAE N. KERBS.

**THE DENTAL PLEDGE
LOMA LINDA UNIVERSITY
SCHOOL OF DENTISTRY**

Before God and all present, these things I do declare:

I will live my life in the service of humanity.

I will promote and practice the charity I owe humankind and endeavor to reflect God's mercy and compassion in the practice of dentistry.

I will uphold and promote the honor and dignity of my profession. I will strive to conduct myself so that I may merit the respect and confidence of my colleagues.

I will accept my civic responsibilities.

I will hold in gratitude the teachings of my school, and the inspiration of my teachers and classmates.

I will impart to those who follow me the knowledge, skills, and experience I have gained.

I will live my life in a way that brings honor to my family, my profession, my community, my school, and my God.

GRADUATE SCHOOL

June twelve, eight o'clock, Drayson Center



PRELUDE ALVA WAWOROENDENG, keyboard

Selected Compositions

ACADEMIC PROCESSION MARILYN M. HERRMANN, University Commencement Marshal, leading
JUAN C. BELLIARD, ARTHUR B. MARSHAK, EVA J. MILLER, GRENITH J.
ZIMMERMAN, Associate Marshals, assisting

The audience is requested to clear the aisles and remain seated.

Pomp and Circumstance March No. 1 . . . *Sir Edward Elgar*
(arr. Clare Grundman)

INVOCATION PENELOPE DUERKSEN-HUGHES
Associate Professor, Department of Biochemistry and Microbiology

WELCOME RICHARD H. HART, Chancellor of the University

CENTENNIAL LITANY B. LYN BEHRENS, President of the University

MUSICAL SELECTION CAROLYN O. SALLION
How Great Thou Art . . . *Stuart K. Hine*

PRESENTATION ANTHONY J. ZUCCARELLI, Interim Dean of the Graduate School
OF AWARDS THE CHANCELLOR
THE PRESIDENT
LISA M. BEARDSLEY, Vice Chancellor for Academic Affairs

INTRODUCTION THE INTERIM DEAN OF THE GRADUATE SCHOOL
OF SPEAKER

ADDRESS NIELS-ERIK A. ANDREASEN
President, Andrews University
Berrien Springs, Michigan

FINDING COMMON GROUND

CONFERRING OF DEGREES THE CHANCELLOR

AWARDING OF DIPLOMAS RONALD L. CARTER, Interim Dean of the School of Science and Technology
ANTHONY J. ZUCCARELLI, Interim Dean of the Graduate School
PROGRAM COORDINATORS, assisting

BENEDICTION CHARLES W. SLATTERY
Emeritus Professor, Department of Biochemistry

ACADEMIC RECESSION Press On . . . *Selah*

The audience is requested to clear the aisles and remain seated during the recession.

The University provides a color photograph of the graduate, taken at the time of diploma presentation. To minimize distracting others during the ceremony, guests are requested to observe the following picture-taking courtesies: *Please do not* —

- use a flash or additional lighting;
- walk in the main aisles or in front of the platform;
- stand, except very briefly, in the audience line of vision.

CANDIDATES FOR DEGREES

The listing of a candidate's name in the commencement program is presumptive evidence of graduation but is not to be regarded as conclusive.

MASTER OF SOCIAL WORK

Sheereen Ahranjani B.A. Northeastern Illinois University 2001 B.A. Northeastern Illinois University 2002	Mariah Heidenthal B.A. San Diego State University 2002
Jennifer Lorraine Amlani B.S.. University of California, Riverside 2003	Florence Castillo Inay B.A. California State Polytechnic University, Pomona 1994
Kevin Lee Anderson B.A. University of California, Riverside 1997	Nanditha Purushothaman Iyer M.A.S.W. Tata Institute of Social Sciences 2003
Jessica Sachi Kilikina Arita B.A. Point Loma Nazarene University 2002	Jeffrey Douglas Kaye B.A. California State University, San Bernardino 2003
Heidi Ann Ault B.S.W. La Sierra University 2001	Pamela Catherine Mariglia B.S. California Baptist University 2002
Verna J. Avarell B.A. Chapman University 2002	Michelle Martinez B.A. California State University, Chico 2001
Kristi Ann Baumbach B.S.W. Pacific Union College 2003	Danielle Suzanne McClain-Parks B.A. Azusa Pacific University 1999
Tracy Lynn Briggs B.S. The University of Tennessee, Martin 1984	Cheryl Ann Munro B.A. Linfield College 2001
Diane Harris Brown B.A. California State University, Dominguez Hills 1986	Chioma Ufondu Nwafor B.A. University of Ibadan 1990
Yvonne Jeanette Campos B.A. California State University, San Bernardino 2002	Kirsten M. Richter B.A.. La Sierra University 2003
Dori Brook Covarrubias B.A. California State University, San Bernardino 2003	Lori Ann Stump B.S.W. Azusa Pacific University 2001
Ana Magdalena Del Ngal B.A. California State University, San Bernardino 2003	Ayantula Tula Urga B.A. California State University, San Bernardino 1999
Evelyn Senge Ejede YMCA George Williams College 1994	Leigh Erin Volker B.S. California State University, Fullerton 2003
Josephine M. Escalante B.A. National University 2000	Bryce Leo Vradenburg B.A. California State University, East Bay 1978
Julie Marie Griffin B.S. California Baptist University 2002	Lais Tichy Wallace B.A. California Baptist University 2003
Osbaldo Gutierrez B.S. Pacific Union College 2002	Dorothy Ann Wood B.S. Southeast Missouri State University 2000
Connec J. Harnden B.S. California State University, San Bernardino 1987	Stephanie C. Ybarra B.A. Mount Saint Mary's College 1997
Rosalind Harrison, DEC B.A. University of Chicago 1986	M.ED. Azusa Pacific University 1999
J.D. University of California, Los Angeles 1989	

MASTER OF SCIENCE

ANATOMY

Dorian Hector Silva
B.S. Pacific Union College 2000

Roxanne Lavonne Williams
B.A. University of California, Riverside 1993

BIOCHEMISTRY

Liubov Vladimirovna Litvinkova
B.S. Southern Adventist University 2002

Yanrong Zhu, MAR
B.S. Zhejiang University 2000

DENTISTRY

Peter Robert Bond
pediatric dentistry
D.D.S. Loma Linda University SD 1998

Lung-Cheng Chen
periodontics
D.D.S. Chung Shan Medical and Dental College 1996

Todd Brian Ehrler, DEC
orthodontics and dentofacial orthopedics
D.D.S. Loma Linda University SD 2002

Gabriela Elizabeth Garcia
orthodontics and dentofacial orthopedics
D.D.S. Universidad Nacional Autonoma de Honduras
1998

Robert Barker Hoffman, SEP
orthodontics and dentofacial orthopedics
B.A. Miami University Oxford 1995

Sunny Young Hutchinson, DEC
orthodontics and dentofacial orthopedics
B.S. Pacific Union College 1995
B.S. Pacific Union College 1996
D.D.S. Loma Linda University SD 2002

Sunil Kumar Ilapogu, DEC
pediatric dentistry
B.S. Canadian University College 1998
D.D.S. Loma Linda University SD 2002

Carter Alan Lane
orthodontics and dentofacial orthopedics
B.B.A. Andrews University 1985
D.D.S. Loma Linda University SD 2000

Miguel Elias Mego
endodontics
D.D.S. Loma Linda University SD 2001
CIR. DENT. Universidad Nacional Federico Villarreal
1991

N. Jared Nation, DEC
pediatric dentistry
B.A. Pacific Union College 1998
D.D.S. Loma Linda University SD 2002

Louis Zane Stromberg, SEP
endodontics
B.A. University of the Pacific 1979
D.D.S. University of the Pacific 1982

Negar Tabandeh
periodontics
D.D.S. EQUIV. Azad Open University 1996

MARITAL AND FAMILY THERAPY

Vani Keisi Alva B.S. Loma Linda University AH 2001	Kristy Jean Millard B.A. California State University, San Bernardino 2003
Arsineh Ararat, MAR B.S. California State University, Northridge 1999	Donald Jimmie Mock B.S. Brigham Young University 2001
Jolene Nicole Bauer B.S. Loma Linda University SD 1994	Triston B. Morgan B.S. Brigham Young University 2003
Jeremy Scott Boden B.S. Brigham Young University 2003	Josephine M. Perez B.A. University of Guam 1984
Marva Pachot Bourne B.S. La Sierra University 1995	M.ED. University of Guam 1992
M.S. California State University, San Bernardino 2002	Gary L. Robbins B.S. Columbia Union College 2001
Sherma Janel Charlemagne B.S. Andrews University 2003	Carolyn Olivia Sallion B.S. Ryerson Polytechnic Institute 1995
Nishana R. Clarke B.S. La Sierra University 2003	M.P.H. Loma Linda University PH 2001
Susan Elizabeth Clarke B.A. Southern Adventist University 2002	Stephen Von Stutzman B.S. Brigham Young University 2000
Brena Louise Cooper B.A. North Carolina Agricultural and Technical State University 2003	B.S. Brigham Young University, Idaho 2000
Marilee Denise Davis B.S. Brigham Young University 2001	Shauna Lynn Summers B.A. Brigham Young University 1989
Nancy Caroline Edwardson B.S. California Baptist University 2000	M.A. Boston College 1991
Brita Ann Fletcher B.S. Brigham Young University 2002	Chrissy C. Tanoura B.A. Whittier College 2002
Angela Renee Jones, DEC B.A. La Sierra University 2001	Stephen David Taus B.A. University of San Francisco 2002
Carolyn Kean B.A. University of California, Riverside 2000	Michael Scott Thompson B.S. Brigham Young University 2003
	Rochelle M. Williams B.A. California State University, San Bernardino 2003

*The following students completed their work at Canadian University College.
The recognition service was held for these students April 17, 2005, at the college.*

Melanie Marie Boissonnault B.A. The King's University College 2001	Kelly Lynne Usselman, SEP B.A. University of Saskatchewan 1990
Laurianne Sylvia Corkery B.S.W. The University of Calgary 2001	B.S.W. University of Regina 1991
Katherine Irene Magas B.A. University of Alberta, Edmonton 1992	Sabrina Lee Warner B.A. Concordia University College 2002

NURSING

Caroline Marie Clark, SEP
B.S. Loma Linda University SN 2002

Naomi Nanquil Domingo
B.S. Brigham Young University-Hawaii Campus 1987
B.S. University of Hawaii, Manoa 1995

Toni Lynn Hunter
B.S.N. Ohio State University, Main Campus 1978
M.B.A. California State University, Chico 1984

Maureen Le Danseur
B.S. Loma Linda University SN 1996

Carolyn Melissa Marlow
B.S. San Diego State University 1998

Kaylene Kyunghee Oh
B.S. Seoul National University 1985

Shelley Jean Park
B.S. Loma Linda University SN 1985

Anne Berit Petersen
B.A. Columbia Union College 1990
B.S. Andrews University 1994

Aerika Leigh Wiseman
B.S. Azusa Pacific University 1997

NUTRITION

Anhthu Vo Tran
B.S. University of California, Irvine 2001

Janine Alisha Zemaitis
B.S. San Francisco State University 1999

PHYSIOLOGY

Brandon Khoa Bui, DEC
B.S. Loma Linda University AH 2001
Shelane Alexis Hill
B.S. Northern Caribbean University 2000

Mary Min Kim
B.S. Pacific Union College 2001

SPEECH-LANGUAGE PATHOLOGY

Yara M. Cuen
B.A. La Sierra University 2003
Janice Aranas delos Reyes
B.A. University of Nevada, Las Vegas 2000
Holly Marie Heath
B.S. Loma Linda University AH 2003
Jocelyn Nicole Jutzy
B.S. Loma Linda University AH 2003
Ritika Ravijit Kahandal
B.S. Loma Linda University AH 2003
Alyssa Marie Ketcherside
B.S. Loma Linda University AH 2003
Shannon Marie Kolde
B.S. Loma Linda University AH 2003

Katrina Leverne Maxwell
B.S. Loma Linda University AH 2003
Jovie O'Keefe Radaza
B.S. Loma Linda University AH 2002
Lisa Michelle Robinson
B.S. Loma Linda University AH 2003
Givona Andelyn Sandiford
B.S. Loma Linda University AH 2003
Lucinda Renee Schmidt
B.S. Loma Linda University AH 1999
Connie Chia-Ying Tong
B.S. University of California, Los Angeles 2001
Joell Lynne Troyer
B.S. University of Nebraska at Lincoln 1994

MASTER OF ARTS

CLINICAL MINISTRY

Gualbert Augustin
B.A. Caribbean Union College 1998
Marc Eli Genece
B.A. University of Florida 2000

Sean J. Hibbs
B.A. Westmont College 2002

PSYCHOLOGY

- Erin O'Carroll Bantum
B.A. University of Nevada, Reno 1999
- Luther Eugene Davis, DEC
B.S. Southwestern Assemblies of God University 2000
- Kieran Kaur Dhillon, SEP
B.A. University of California, Santa Barbara 2001
- Janice Lyanne Enriquez, MAR
B.S. University of California, Davis 1998
- Patricia Maria Flynn, SEP
B.S. Cornell University 1998
- Warren Scott Merrifield, DEC
B.S. Colorado State University 1998
- Michelle Marie Pearson, DEC
B.S. The University of Calgary 2000
- Jamie Ann Pivonka-Jones
B.A. California State University, Fullerton 2000
- Erin Elissa Ramirez
B.A. Sonoma State University 1998
- Fatima Juridia Ruiz
B.A. University of California, Riverside 1999
- York Tsai
B.A. Boston University 1998

DOCTOR OF PSYCHOLOGY

- Brandie Lamberton Anders, DEC
B.S. Pacific Union College 1996
M.A. Loma Linda University GS 1999
- Leon Austin
B.A. Southern Adventist University 1995
M.S. Loma Linda University GS 1997
M.A. Loma Linda University GS 2003
- Geneeta Kaliah Chambers
B.A. California State University, San Bernardino 2000
M.A. Loma Linda University GS 2003
- Nancy Lynn Farrell
B.A. California State University, San Bernardino 1995
M.A. Loma Linda University GS 2001
- Rene Mary Keres, SEP
B.S. University of Illinois at Urbana-Champaign 1985
M.A. Loma Linda University GS 1999
- Heather Nicholle Mercer
B.S. Bowling Green State University, Main Campus 1993
- Ralph Ernest Quinonez, DEC
B.S. California State University, Dominguez Hills 1986
- Carmen Lily Thieszen
B.A. University of California, Riverside 1999
M.A. Loma Linda University GS 2003

DOCTOR OF PHILOSOPHY

ANATOMY

- Colleen M. Moran
B.S. California Lutheran University 1995
M.S. University of California, San Francisco 1998
Dissertation: Effects of Neurotrophic Factors on Osteoblast Growth and Differentiation
- Sharda Kalla Vyas
M.D. Universidad del Zulia 1993
Dissertation: Rasveratrol Regulates IGP 11 in Breast Cancer Cells

BIOCHEMISTRY

- Nak-Won Choi, DEC
B.S. Chonbuk National University 1991
M.S. Chonbuk National University 1995
Dissertation: Toxin B Subunit Ligands for Improvement of Mucosal Rotavirus Vaccines
- Monte Wayne Miller, DEC
B.S. University of California, Riverside 1998
Dissertation: A Study of the P14 4RF Protein Activity in Human Tumor Cells and in Cells Implanted in Mice
- Yu Joy Zhao, DEC
B.S. Beijing Normal University 1983
M.S. California State Polytechnic University, Pomona 1992
Dissertation: The Regulatory Role of ERK 1 and ERK 2 in Cerebral Artery Contraction: A Developmental Study

BIOLOGY

- Varner Leroy Leggitt
D.D.S. Loma Linda University SD 1984
M.S. Loma Linda University GS 1992
M.S. Loma Linda University GS 1996
Dissertation: Caddisfly-Dominated Bioherms from the Eocene Green River Formation
- Harold James Marlow, Jr.
B.S. Weber State University 1986
M.S. Rice University 1991
Dissertation: The Environmental Impact of Food Production in California
- Benjamin Alejandro Navia
B.S. Pontifical Catholic University of Puerto Rico, Ponce 1995
M.S. Andrews University 1999
Dissertation: Study of L315 Role in Calling-Song Recognition in the Neural Network of the Auditory System in Female Cricket *A. domes*
- Neville Anthony Trimm, Jr., SEP
B.S. Andrews University 1998
M.S. Loma Linda University GS 2001
Dissertation: Autecology of Audubon's Shearwaters at San Salvador Islands, Bahamas

MARITAL AND FAMILY THERAPY

- Karina Sanchez Bravo
B.A. California State University, San Bernardino 2000
M.S. Loma Linda University GS 2003
Dissertation: Autistic Severity and Parental Stress: The Mediating Role of Family Environments
- Linda Lee Buxbaum, DEC
B.S. San Diego State University 1998
M.S. San Diego State University 2001
Dissertation: Family Roles, Relationships, and Resiliency: Case Studies in Sibling Incest
- Randi S. Cowdery
B.A. Hofstra University 1996
M.S. California State University, Fullerton 2002
Dissertation: Discourse Analysis of Narrative Practices and Grief among Elders
- Karen Mui-Teng Quek, DEC
M.A. Biola University 1990
M.S. California State University, Fullerton 1993
Dissertation: Equality in a Collectivistic Culture: A Qualitative Study of Newlyweds in Singapore
- Eva Bella Martinez
B.S.W. La Sierra University 1998
M.S.W. Loma Linda University GS 2000
Dissertation: The Relationship between Religious Coping Styles and Perceived Social Support on Marital Satisfaction and Depression among Marital Dyads with End-Stage Renal Disease
- Amy Rose Tuttle
B.A. California State University, Fresno 1999
M.S. California State University, Fresno 2001
Dissertation: Parent Experience in Child-Protection Services: Analysis of a Group Process
- H. Luis Vargas
B.S. Bethel College 1999
M.A. Bethel Seminary San Diego 2001
Dissertation: Cultural Competencies in Multicultural Practice with Cross-cultural Clients

MICROBIOLOGY AND MOLECULAR GENETICS

- Terry Ann Brown-Bryan
B.S. Northern Caribbean University 1999
Dissertation: Role of the PWWP Domain of LEDGF/p52, a Transcription and Novel Death Protein
- Tracy Ruth Daniels
B.S. California Baptist University 1997
Dissertation: The Potential Role of LEDGF/p75 in Prostate Cancer
- Jessica Claire Edwards
B.S. Walla Walla College 1998
Dissertation: Pmf and Redox Sensing by Aerotaxis Transducers Aer and Tsr in *Escherichia coli*
- Sheldon Levon Holder
B.S. Oakwood College 1998
Dissertation: Design, Validation, and Practical Use of a Homology Model of Pim-1 Kinase
- Elaine Ann-Marie Vanterpool
B.S. Oakwood College 2001
Dissertation: Mechanisms of Virulence Regulation in *Porphyromonas gingivalis*

PHARMACOLOGY

- Soochan Bae
B.S. Gyeongsang National University 1990
M.S. Mississippi State University 1997
Dissertation: Prenatal Cocaine Exposure and Cardiac Programming

PSYCHOLOGY

- Talin Babikian
B.A. Occidental College 1997
M.A. University of California, Los Angeles 1999
M.A. Loma Linda University GS 2001
M.P.H. Loma Linda University PH 2004
Dissertation: MR Spectroscopy and Susceptibility
Weighted Imaging: Predicting Long-term
Neuropsychological Outcome following Pediatric
TBI
- Tanya Renee Burley Aaen
B.A. Walla Walla College 1999
M.A. Loma Linda University GS 2002
Dissertation: Psychological Sequelae of Heart-
Transplant Children
- Janice Lyanne Enriquez
B.S. University of California, Davis 1998
Dissertation: Magnetic Resonance Spectroscopy as a
Predictor of Neuropsychological Outcome in
Children with Nonaccidental Head Trauma
- Sean Eugene Evans
B.A. La Sierra University 1997
M.A. Loma Linda University GS 2004
Dissertation: Age and Gender on Pain Descriptions
and Intensity in Children Diagnosed with ALL
- Patricia Maria Flynn
B.S. Cornell University 1998
M.A. Loma Linda University GS 2004
Dissertation: Motivated Screening Behavior and Its
Cultural Antecedents
- Stephanie Dianne Griffone
B.A. Williams College 1993
M.A. Loma Linda University GS 2000
Dissertation: Do Infant Heart-Transplant Recipients
Have Visuospatial or Visuomotor Deficits?
- Amite Rochelle Milner
B.A. San Jose State University 1993
M.A. San Jose State University 1997
Dissertation: Acculturation, Prejudice, and
Stereotypes towards Ethnic Groups among Latino
and Asian American Immigrants and Anglo
Americans
- Melinda Lee Nielsen, SEP
B.A. University of California, Irvine 1983
M.F.A. University of California, Irvine 1998
M.A. Chapman University 1996
M.A. Loma Linda University GS 2000
M.P.H. Loma Linda University PH 2000
Dissertation: Psychological Factors Associated with
Anticipatory Nausea and Vomiting in Women with
Breast Cancer
- Carolyn Ruth Wicks
B.A. California State University, San Bernardino 1988
M.A. Loma Linda University GS 2001
Dissertation: Resilience: An Integrative Framework
for Measurement

DOCTOR OF MARITAL AND FAMILY THERAPY

MARITAL AND FAMILY THERAPY

- Norma Gene Scarborough
B.A. California State University, Dominguez Hills 1978

AWARDS

Dean's Award for Master's Degree Programs: SHERMA JANEL CHARLEMAGNE.

Dean's Award: ANNE BERIT PETERSEN.

Loma Linda University Chancellor's Award: SHARDA KALLA VYAS.

SCHOOL OF NURSING

June twelve, ten-thirty o'clock, Drayson Center



PRELUDE ALVA WAWOROENDENG, keyboard

Selected Compositions

ACADEMIC PROCESSION RONALD L. CARTER, University Commencement Marshal, leading
ARTHUR B. MARSHAK, EVA J. MILLER, NAOMI N. MODESTE, GRENITH J.
ZIMMERMAN, Associate Marshals, assisting

The audience is requested to clear the aisles and remain seated.

Pomp and Circumstance March No. 1 . . . *Sir Edward Elgar*
(arr. Clare Grundman)

INVOCATION STEPHANIE CONTRERAS, Social Vice President

WELCOME RICHARD H. HART, Chancellor of the University

CENTENNIAL LITANY B. LYN BEHRENS, President of the University

PRESENTATION HELEN EMORI KING, Dean of the School

OF AWARDS THE CHANCELLOR

THE PRESIDENT

LISA M. BEARDSLEY, Vice Chancellor for Academic Affairs

MUSICAL SELECTION JANICE JOY H. RAMOS, violin
CHARLES RAY A. APRECIO, piano

People Need the Lord . . . *Greg Nelson and Phil McHugh* (arr. Carol Foss)

INTRODUCTION THE DEAN
OF SPEAKER

ADDRESS CHARLIE JO MORGAN
President/CEO, Health Matters Unlimited

LEGACY AND OPPORTUNITY

MUSICAL SELECTION JANIS BLAKEBOROUGH
Call on Jesus . . . *Nicole C. Mullen*

CONFERRING OF DEGREES THE CHANCELLOR

AWARDING OF DIPLOMAS THE DEAN
JAN NICK, Associate Professor, School of Nursing

PINNING CEREMONY BONNIE THIEL, Assistant Professor, School of Nursing

CHARGE TO THE CLASSES THE DEAN

CLASS PRESIDENT'S LANA GARSIDE
RESPONSE

BENEDICTION LINDSEY VENDEN, Spiritual Vice President

ACADEMIC RECESSION Press On . . . *Selah*

The audience is requested to clear the aisles and remain seated during the recession.

The University provides a color photograph of the graduate, taken at the time of diploma presentation. To minimize distracting others during the ceremony, guests are requested to observe the following picture-taking courtesies: *Please do not* —

- use a flash or additional lighting;
- walk in the main aisles or in front of the platform;
- stand, except very briefly, in the audience line of vision.

CANDIDATES FOR DEGREES

The listing of a candidate's name in the commencement program is presumptive evidence of graduation but is not to be regarded as conclusive.

ASSOCIATE IN SCIENCE

Janeatte Bendezu, MAR

✓ Rosanna Dagostino

✓ Rosalba Ledezma, MAR

✓ *Lezlie Gabrys*

✓ Veronica Lucero

✓ Maricela Perez

Ronald A. Ririhena

✓ Genaro Eloy Sanchez, MAR

✓ Maria L. Soriano

BACHELOR OF SCIENCE

✓ Erica J. Alvarado

✓ Liz Darnelle Ang, cum laude

✓ Charles Ray Aprecio

NO ✓ Rhona Joyce Arevalo

✓ Melanie D. Azaula, cum laude

✓ Rory B. Baldwin

✓ Olympia Lizzette Beteta, cum laude

✓ Suzanne Blades

✓ Janis Debra Blakeborough

✓ Shannon Leigh Bounds

✓ Maria Christina P. Cecilio, MAR

✓ Paul Joel Centi

✓ Kristina Renee Chase

✓ Jessica Charla Collo

✓ Stephanie J. Contreras,
magna cum laude

NO ✓ Melanie Ann Davis, cum laude, MAR

NO ✓ Delilah Jean Dees, MAR

✓ Nicole Anne Dees, MAR

✓ Angie Elizabeth De Gennaro

✓ Delilah Vanessa Djuanda

✓ Michelle J. Duffy

✓ Mauricio Duran

✓ Jaylene Rochelle Esposito

✓ Esmeralda Quiroz Estrada

✓ Anthony R. Frazier

✓ *Kimberly Bock*

✓ ~~Lezlie~~ LeAnn Gabrys

✓ Corina Ann Gallardo, MAR

✓ Jana Janine Garside, cum laude, MAR

✓ Penny Evans Gramling

✓ Nikia Monee Gray-Hutto

✓ Doreen Ann Guadiz

✓ Corinne M. Haguewood

✓ Maritza Harrison

✓ Nanci Elizabeth Ingram

✓ Diane Y. Kim

✓ Mei-Hwei Lu

✓ Lauren-Shylene S. Luna, cum laude

✓ Lisaya Mani

✓ Erin Marcroft

✓ Erin M. McCloyn

✓ Barbara J. McEwen, summa cum laude

✓ Jennifer Medallo, MAR

✓ Faye M. Melocoton

✓ Joyce Lynn Ganela Mercado

✓ Rina Rita Morales, MAR

✓ Megan E. Moran, MAR

✓ Paul Mpawenimana

✓ ~~Christine Marie Myers, cum laude~~

✓ Chie H. Newsom, MAR

✓ Terri Thao Paden

✓ Nicole Marie Papay

✓ Francesca R. Peña, cum laude

✓ Jessica Ninoska Perez

✓ Sabrina Angelica Pesantes

✓ Iliana Soto Pinon

✓ Christopher Charles Poblete, MAR

✓ Janice J. Ramos, MAR

✓ Archimedes Aguilar Reyes

✓ Gladdy Mae Robles

✓ Giselle O. Samaniego

✓ Reina Sanchez

✓ Mark Anthony R. Sayat

✓ Kimberly Joy Schoenborn

✓ ~~Deborah Anne Shavlik~~

✓ Jill Ann Shea

✓ Brenly Melissa Silva, cum laude

✓ Ambrosia M. Taylor-Prudhomme

✓ Maria Josephine Tuya

✓ Kathy Urrutia

✓ Lindsey Rae Venden, cum laude

✓ Hilda Vigil, magna cum laude, MAR

✓ Reimee Lynn Ward

✓ Casey Day Wenner

✓ Corinne Lynch Wombacher

✓ *Suz Bleything Ponce Kingsley*
Olivia Botiska

NURSE'S PLEDGE

I SOLEMNLY PLEDGE MYSELF, before God and in the presence of this assembly, to practice faithfully my profession of nursing.

I will do all in my power to make and maintain the highest standards and practices of my profession.

I will hold in confidence all personal matters committed to my keeping in the practice of my calling.

I will serve as a loyal member of the health care team and will devote myself to the welfare of my patients, my families, and my community.

I will endeavor to fulfill my rights and privileges as a good citizen and to take my share of responsibility in promoting the health and welfare of my community.

I will constantly endeavor to increase my knowledge and skills in nursing and to use them wisely.

I will zealously seek to nurse those who are ill, wherever they may be and whenever they are in need.

I will be active in assisting others in safeguarding and promoting the health and happiness of humanity.

Adapted from the International Pledge of Nursing

CLASS OFFICERS

President: LANA GARSIDE.

Spiritual Vice President: LINDSEY VENDEN.

Social Vice President: STEPHANIE CONTRERAS.

Secretary: CORINA GALLARDO.

Treasurer: MELANIE AZAULA.

Senator: SUSAN BLADES.

Historian: JANICE RAMOS.

Sponsors: JAN NICK, Associate Professor of Nursing.

BONNIE THIEL, Assistant Professor of Nursing.

AWARDS

Loma Linda University Chancellor's Award: BARBARA MCEWEN.

Dean's Award

Graduate: ANNE BERIT PETERSEN.

Undergraduate: LANA GARSIDE.

Fineman Award: RORY BALDWIN.

Lucile Lewis Scholarship: ERLENE LANTING.

Outstanding RNBS Award: HILDA VIGIL.

SCHOOL OF ALLIED HEALTH PROFESSIONS

PHYSICAL THERAPY

June twelve, one o'clock, Drayson Center



PRELUDE ALVA WAWOROENDENG, keyboard

Selected Compositions

ACADEMIC PROCESSION RONALD L. CARTER, University Commencement Marshal, leading
W. LAWRENCE BEESON, ELIZABETH A. BOSSERT, CARLENE M. DRAKE,
ARTHUR B. MARSHAK, Associate Marshals, assisting

The audience is requested to clear the aisles and remain seated.

Pomp and Circumstance March No. 1 . . . *Sir Edward Elgar*
(arr: Clare Grundman)

INVOCATION DESMYRNA R. TAYLOR
Assistant Professor, Department of Physical Therapy

WELCOME RICHARD H. HART, Chancellor of the University

CENTENNIAL LITANY B. LYN BEHRENS, President of the University

MUSICAL SELECTION WILTON REMIGIO

The Aria . . . *Bach*

PRESENTATION CRAIG R. JACKSON, Dean of the School

OF AWARDS THE CHANCELLOR

THE PRESIDENT

LISA M. BEARDSLEY, Vice Chancellor for Academic Affairs

INTRODUCTION THE DEAN
OF SPEAKER

ADDRESS JOSÉ V. ROJAS
Director of Volunteer Ministries and of the Office of Young Adult Ministries
North American Division of Seventh-day Adventists

IF AT FIRST YOU DON'T SUCCEED . . .

CONFERRING OF DEGREES THE CHANCELLOR

AWARDING OF DIPLOMAS THE DEAN

AND HELEN GREENWOOD, Director of Admissions and Records

CHARGE TO THE CLASSES

Assistant, A.S.	DESMYRNA R. TAYLOR
M.P.T./D.P.T.	LAWRENCE E. CHINNOCK
P.P.M.P.T./P.P.D.P.T.	EVERETT J. LOHMAN
D.P.T.Sc.	EDD J. ASHLEY, Chair of the Department

BENEDICTION HOWARD SULZLE

Assistant Professor, Department of Physical Therapy

ACADEMIC RECESSION Press On . . . *Selah*

The audience is requested to clear the aisles and remain seated during the recession.

The University provides a color photograph of the graduate, taken at the time of diploma presentation. To minimize distracting others during the ceremony, guests are requested to observe the following picture-taking courtesies: *Please do not* —

- use a flash or additional lighting;
- walk in the main aisles or in front of the platform;
- stand, except very briefly, in the audience line of vision.

CANDIDATES FOR DEGREES

The listing of a candidate's name in the commencement program is presumptive evidence of graduation but is not to be regarded as conclusive.

DEPARTMENT OF PHYSICAL THERAPY

ASSOCIATE IN SCIENCE

PHYSICAL THERAPIST ASSISTANT

Zeineb Ayadi	Wasana Ruwani Fernando	Rachel Jean Northrop
Cari Jean Barba	Luis Carlos Gonzalez	Emalee M. Pallis
Mellodie V. Barnes	Eloise Rea Hamilton	Efrain Preciado
Amy Bates	Susan Rene Hemsley	Alicia Vaca Reyes
Joshua Joseph Callahan	Darold Ray Homan	Kiff Jordan Rivinius
Luis Angel Calvillo	Amber Leigh Ineichen	Jennifer Deborah Ann Robinson
Luis Orlando Cerrato	Michelle Nicole Kitchen	James Noble Shahan
Daisy Dale Chan	Neilvon Bugtong Langas	Kristyn Marie Shaw
Jonathan Robert Cheek	Ty Esha Nicole Lovelace	Michael Robert Thomas
Candice Nicole Conroy	Patricia Dale McIntyre-Heller	Jennifer I. Veloz
Katherine Anne Earhart	Laura Sydney Medina	Margaret Ann-Marie Waghorn
John Leslie Fairchild	Ian Christopher Mohammed	Nicole Angelina Weir
Daphne F. Fajayan	Thuong Thi Nguyen	

MASTER OF PHYSICAL THERAPY

ENTRY-LEVEL

Emily Diane Armstrong B.S. Loma Linda University 2005, cum laude	Jignyasha Suresh Patel B.S. Loma Linda University 2005
Shonna Renee Bohlman B.S. Loma Linda University 2005, cum laude	Alexia D. Potts B.S. Loma Linda University 2005
Sherrie Malonee Brooks B.S. Loma Linda University 2005	John Lee Poythress B.S. Loma Linda University 2005, summa cum laude
Glenda Roman Casillas B.S. Loma Linda University 2005	Jason Gene Rahenkamp B.S. Loma Linda University 2005, cum laude
Grace Eunhae Choi B.S. Loma Linda University 2005	Margarita Jean Rios B.S. Loma Linda University 2005
Elisabeth Alison Cone B.S. Loma Linda University 2002, cum laude	Sabrina Marie Tovar B.S. Loma Linda University 2005, cum laude
Erik Mauricio Farias B.S. Loma Linda University 2005	Don Minh Tran B.S. Loma Linda University 2005, cum laude
Kelli Elizabeth Fessler B.S. Loma Linda University 2005	Fredrick Ryan Valdez B.S. Loma Linda University 2005
Jeremy Allen Jackson B.S. Loma Linda University 2005, cum laude	Erin Lynn Wiltshire B.S. Loma Linda University 2005
Hana Kim B.S. Loma Linda University 2005	Smita John Zubak B.S. Loma Linda University 2005
Benjamin Laryea B.S. Loma Linda University 2005	
Denise Adele Marnella B.S. Loma Linda University 2005, cum laude	

PROGRESSION

<p>Daniel Gerald Carleton B.A. University of California, Santa Barbara 1989</p> <p>Arif Artic Dean B.S. Loma Linda University 2005</p> <p>Ryan Kent Earll B.S. Loma Linda University 2005</p> <p>Kathryn Ann Esqueda B.S. Loma Linda University 2005, cum laude</p> <p>Michael Esqueda B.S. Loma Linda University 2005</p> <p>Alf Rey Franco B.S. Loma Linda University 2005</p> <p>Henry Albert Garcia B.S. Loma Linda University 2005</p> <p>Joseph Ernest Grabicki B.S. Loma Linda University 2005</p> <p>Lisa Thu Hong B.A. University of Washington, Seattle 1999</p> <p>Troy Michael Hughes B.S. University of California, Los Angeles 1992</p> <p>Karen Lynne Kennedy B.S. Indiana University, Bloomington 1987 B.A. Indiana University, Bloomington 1987</p>	<p>Kevin M. Olaires B.A. Vanguard University of Southern California 1996</p> <p>Michael Andrew Olney B.S. Loma Linda University 2005</p> <p>Esther Jean Olsen B.S. Loma Linda University 2005</p> <p>Kara Samoff B.A. California State University, Long Beach 1996</p> <p>Joshua C. Slater B.S. California State University, Dominguez Hills 2002</p> <p>Vernon George Spidle B.S. Loma Linda University 2005, cum laude</p> <p>Michelle Lynn Walters B.S. Loma Linda University 2005</p> <p>Keith Elliot Warwick B.S. Loma Linda University 2005, cum laude</p> <p>Christine Ann Wilson B.S. Loma Linda University 2005</p>
----------------------------------------------------------------------------------------------------------------------------------------------------------------------------------------------------------------------------------------------------------------------------------------------------------------------------------------------------------------------------------------------------------------------------------------------------------------------------------------------------------------------------------------------------------------------------------------------------------------------------------------------------------------------------------------------------------------------------------------------------------------------------------------------------------------------	------------------------------------------------------------------------------------------------------------------------------------------------------------------------------------------------------------------------------------------------------------------------------------------------------------------------------------------------------------------------------------------------------------------------------------------------------------------------------------------------------------------------------------------------------------------------------------------------------------------------------------------------------------------

POST-PROFESSIONAL

<p>Mary F. Astor B.S.P.T. University of Puerto Rico, Medical Sciences Campus 2002</p> <p>Ada I. Colon Gavillan B.S.P.T. University of Puerto Rico, Medical Sciences Campus 1982</p> <p>Maria Lucrecia Cuneo Libarona, SEP TITULO Universidad del Salvador 2002</p> <p>Ankur Ashok Desai B.S. Manipal Academy of Higher Education 2001</p> <p>Herat Vidyut Desai Rajiv Gandhi University of Health Sciences</p> <p>Gayle Suhasini D'souza B.P.T. Rajiv Gandhi University of Health Sciences 2001</p> <p>James George Tamil Nadu Dr. M.G.R. Medical University</p> <p>Elizabeth Gonzalez B.S.P.T. University of Puerto Rico, Medical Sciences Campus 2001</p> <p>Monika Khurana B.P.T. Devi Ahilya Vishwavidyalaya 2002</p> <p>Annapoorna Kotha Vandana Vijaykumar Malkalpatte University of Pune</p> <p>Karina Marciano B.S.P.T. University of Puerto Rico, Medical Sciences Campus 2002</p> <p>Raphael Melendez B.S.P.T. University of Puerto Rico, Medical Sciences Campus 1992</p>	<p>Sharmi Subhabrata Mukherjee</p> <p>John Nieves B.S.P.T. University of Puerto Rico, Medical Sciences Campus 1998</p> <p>Elsa Nieves-Soto B.S.P.T. University of Puerto Rico, Medical Sciences Campus 1993</p> <p>Arelys M. Perez-Vargas B.S.P.T. University of Puerto Rico, Medical Sciences Campus 1999</p> <p>Isamar Vanessa Rivera B.S.P.T. University of Puerto Rico, Medical Sciences Campus 2002</p> <p>Dorelis H. Rodríguez B.S.P.T. University of Puerto Rico, Medical Sciences Campus 2002</p> <p>Robert Santiago B.S. University of Puerto Rico, Medical Sciences Campus 1973</p> <p>Jennifer Soto B.S.P.T. University of Puerto Rico, Medical Sciences Campus 2002</p> <p>Melissa Vale B.S.P.T. University of Puerto Rico, Medical Sciences Campus 2002</p> <p>Dimaira Velazquez B.S.P.T. University of Puerto Rico, Medical Sciences Campus 2002</p>
------------------------------------------------------------------------------------------------------------------------------------------------------------------------------------------------------------------------------------------------------------------------------------------------------------------------------------------------------------------------------------------------------------------------------------------------------------------------------------------------------------------------------------------------------------------------------------------------------------------------------------------------------------------------------------------------------------------------------------------------------------------------------------------------------------------------------------------------------------------------------------------------------------------------------------------------------------------------------------------------------------------------------------------------------------------	--------------------------------------------------------------------------------------------------------------------------------------------------------------------------------------------------------------------------------------------------------------------------------------------------------------------------------------------------------------------------------------------------------------------------------------------------------------------------------------------------------------------------------------------------------------------------------------------------------------------------------------------------------------------------------------------------------------------------------------------------------------------------------------------------------------------------------------------------------------------------------------------------------------------------------------------

DOCTOR OF PHYSICAL THERAPY

ENTRY-LEVEL

Sheng-Yin Chen B.A. University of California, Riverside 2001	Andrea Michelle Perez B.S. California State University, Long Beach 2001
William Chae Cho B.S. California State University, Northridge 2001	Tim Try Phan B.A. California State University, San Bernardino 1999
Jackelyn Dawn Cook B.S. Texas Women's University 1997	Rico B. Sanchez B.S. California State Polytechnic University, Pomona 2001
Julie Ann Egus B.S. California Baptist University 2001	Summer Michele San Lucas B.S. Westmont College 2001
Dharmesh Gordhan B.S. University of California, Santa Barbara 2002	Wanda Thienviwat B.S. San Jose State University 2001
Neda Hadi Nahavandi B.A. California State University, Northridge 2000	Patricia Mae Tupas B.S. Loyola Marymount University 1999
Shaunna Marie Houle B.S. Loma Linda University 2005, cum laude	Seth Talbot Williams B.S. Brigham Young University 2001
Gifford Gibock Kim B.A. Johns Hopkins University 1998	Janae Nicole Zahn B.S. University of San Francisco 2002
Lawrence King Ho Ma B.S. San Jose State University 2002	
William James Patterson B.S. University of Arizona 1995	

POST-PROFESSIONAL

Leonard Arland Adorador B.S. Loma Linda University AH 1999 M.P.T. Loma Linda University AH 1999	Sandra Paola Mercado B.S. Loma Linda University 2004 M.P.T. Loma Linda University AH 2004
Heidi Lynn Aranda B.S. Loma Linda University 2004 M.P.T. Loma Linda University AH 2004	Tamara Marie Ordas B.S. Walla Walla College 1996 M.P.T. Loma Linda University AH 2003
David Mathias Baker B.S. Oakwood College 2000 M.P.T. Loma Linda University AH 2004	Edward Elpidio Palafox B.S. Loma Linda University 2004 M.P.T. Loma Linda University AH 2004
Denise Danielle Bravo B.S. Loma Linda University 2004 M.P.T. Loma Linda University AH 2004	Teresa Kay Rogers B.S. Southern Adventist University 1988 M.S. University of Tennessee, Knoxville 1989 B.S. Loma Linda University AH 1995 M.P.T. Loma Linda University AH 1995
Olav Cabel B.S. Loma Linda University AH 1999 M.P.T. Loma Linda University AH 1999	Linda Grace Row B.S. Loma Linda University 2003 M.P.T. Loma Linda University AH 2003
Russell Jay Mirasol Dial B.S. Loma Linda University 2003 M.P.T. Loma Linda University AH 2003	Nathan William Schmunk B.S. Loma Linda University 2004 M.P.T. Loma Linda University AH 2004
Glyniss Claudette Green B.S. Loma Linda University AH 1997 M.P.T. Loma Linda University AH 1997	John Robert Thomas B.S. Loma Linda University 2004 M.P.T. Loma Linda University AH 2004
Richard Jeremy Hubbard B.S. Loma Linda University 2004 M.P.T. Loma Linda University AH 2004	Lorinda Jewell Unruh B.S. Loma Linda University 2003 M.P.T. Loma Linda University AH
Naoko Kashiwa B.S. Pacific Union College 1998 M.P.T. Loma Linda University AH 2004	Kimberly Mae Van Liempd B.S. Loma Linda University 2003 M.P.T. Loma Linda University AH 2003
Ji-Na Kim B.S. Sahmyook University 1998 M.P.T. Loma Linda University AH 2002	

AWARDS

DEPARTMENT OF PHYSICAL THERAPY

Physical Therapist Assistant

Fred B. Moor: MELISSA BUFFINGTON, AARON WATERS.

PT Faculty Award: JONATHAN CHEEK, RACHEL NORTHROP.

PT Alumni Association Achievement Award: ALICIA REYES.

PT Alumni Association Scholarship Award: AMBER INEICHEN, LAURA MEDINA, JAMES SHAHAN.

Master of Physical Therapy

Dean's Award: CHRISTINE WILSON.

Fred B. Moor Award: DHARMESH GORDHAN, KAREN KENNEDY, LAWRENCE MA, ANDREW PEREZ,
VERNON SPIDLE, SABRINA TOVAR.

Thomas G. Burke Memorial Scholarship Award: JACKELYN COOK, SMITA ZUBAK.

PT Faculty Award: JULIE EGUS, HENRY GARCIA, SHAUNNA HOULE, JEREMY JACKSON.

PT Alumni Association Scholarship Award: JACKELYN COOK, KATHRYN ESQUEDA, SHAUNNA HOULE,
JOHN POYTHRESS, SUMMER SAN LUCAS, VERNON SPIDLE.

PT Alumni Association Achievement Award: GRACE CHOI, ERIK FARIAS, LISA HONG,
KEVIN OLAIRES, JASON RAHENKAMP, SUMMER SAN LUCAS.

Post-Professional Physical Therapy

PP-MPT Faculty Award: ALICIA PEARSON.

PP-DPT Faculty Award: MARIA LUCRECIA CUNEO LIBARONA, EDWARD PALAFOX.

DPTSC Faculty Award: DARYL LAWSON.

SCHOOL OF ALLIED HEALTH PROFESSIONS

June twelve, four o'clock, Drayson Center



PRELUDE ALVA WAWOROENDENG, keyboard

Selected Compositions

ACADEMIC PROCESSION MARILYN M. HERRMANN, University Commencement Marshal, leading
W. LAWRENCE BEESON, ELIZABETH A. BOSSERT, CARLENE M. DRAKE,
NANCY E. KAWAHARA, Associate Marshals, assisting

The audience is requested to clear the aisles and remain seated.

Pomp and Circumstance March No. 1 . . . *Sir Edward Elgar*
(arr. Clare Grundman)

INVOCATION DAVID LOPEZ
Department of Cardiopulmonary Sciences

WELCOME RICHARD H. HART, Chancellor of the University

CENTENNIAL LITANY B. LYN BEHRENS, President of the University

MUSICAL SELECTION TIFFANY LO, flute
Vocalise . . . *Sergei Rachmaninoff*

PRESENTATION CRAIG R. JACKSON, Dean of the School
OF AWARDS THE CHANCELLOR
THE PRESIDENT
LISA M. BEARDSLEY, Vice Chancellor for Academic Affairs

INTRODUCTION THE DEAN
OF SPEAKER

ADDRESS JOSÉ V. ROJAS
Director of Volunteer Ministries and of the Office of Young Adult Ministries
North American Division of Seventh-day Adventists

IF AT FIRST YOU DON'T SUCCEED . . .

CONFERRING OF DEGREES THE CHANCELLOR

AWARDING OF DIPLOMAS THE DEAN
AND HELEN GREENWOOD, Director of Admissions and Records
CHARGE TO THE CLASSES

<i>Cardiopulmonary Sciences</i>	DAVID LOPEZ, Chair
Emergency Medical Care, B.S.	EHREN NGO
Respiratory Therapy, B.S.	DAVID M. STANTON
Respiratory Therapy, P.P.B.S.	DAVID LOPEZ
Physician Assistant, M.P.A.	KENRICK C. BOURNE
<i>Clinical Laboratory Science</i>	KENNETH A. CANTOS, Chair
Clinical Laboratory Science, B.S.	KENNETH A. CANTOS
Cytotechnology, B.S.	MARLENE O. OTA
<i>Health Information Management</i>	MARILYN R. DAVIDIAN, Chair
Health Information Administration, B.S.	
Health Information Systems, M.H.I.S.	
Progression, B.S.	
<i>Nutrition and Dietetics</i>	BERTRUM C. CONNELL, Chair
Certificate and B.S.	
<i>Occupational Therapy</i>	LIANE N. HEWITT, Chair
Assistant, A.A., and Entry-Level M.O.T.	
Post-Professional M.O.T.	ESTHER HUECKER
<i>Radiation Technology</i>	ARTHUR W. KROETZ, Chair
Medical Radiography, A.S.	MARK J. CLEMENTS
Radiation Technology, B.S.	RENE N. STONE-MERCADO
Radiologist Assistant, Certificate and B.S.	LAURA L. ALIPOON
<i>Speech-Language Pathology and Audiology</i>	KEIKO KHOO, Chair
Certificate and B.S.	

BENEDICTION GRENITH J. ZIMMERMAN
Associate Dean for Research

ACADEMIC RECESSION Press On . . . *Selah*

The audience is requested to clear the aisles and remain seated during the recession.

The University provides a color photograph of the graduate, taken at the time of diploma presentation. To minimize distracting others during the ceremony, guests are requested to observe the following picture-taking courtesies: *Please do not* —

- use a flash or additional lighting;
- walk in the main aisles or in front of the platform;
- stand, except very briefly, in the audience line of vision.

CANDIDATES FOR DEGREES

The listing of a candidate's name in the commencement program is presumptive evidence of graduation but is not to be regarded as conclusive.

CERTIFICATE

DEPARTMENT OF NUTRITION AND DIETETICS

DIETETICS

Bridgett Kim Duarte
LeiAnna Marie Fleury
Jaime Gomez-Crespo, SEP
Mark W. Huntsman

Chrystyna Ann Kulyk
Rita Y. Leung
Tracy Shuk-Yee Li

Alvaro S. Lieto
Candace Leanne Morgan
Ramanjit K. Sibia

DEPARTMENT OF RADIATION TECHNOLOGY

RADIOLOGIST ASSISTANT

Thomas Caporuscio

Paul Anthony Hawkins

Ruchi Wadhwa

ASSOCIATE IN ARTS

DEPARTMENT OF OCCUPATIONAL THERAPY

OCCUPATIONAL THERAPY ASSISTANT

Audrey L. Adams
Yvonne Deardorff
Elizabeth Diane Garcia

Richelle Marie Jordan
Jennifer Nuzzo

KayAnn Nicole Pedrino
Katherine L. Saucedo

ASSOCIATE IN SCIENCE

DEPARTMENT OF NUTRITION AND DIETETICS

DIETETIC TECHNOLOGY

Lili Wahyuningsih

DEPARTMENT OF RADIATION TECHNOLOGY

MEDICAL RADIOGRAPHY

Jared Ryan Aguila
Jerrold Lee Alcorn, MAR
Marissa Renee Andersen, MAR
Rhonda L. Anderson, MAR
Reyna Denisse Arvizu, MAR
Juan Carlos Barbosa, MAR
Laurie Ann Bush, MAR
Kathryn McLennan Cockrill, MAR
Gretchen Joan Conte
Ricki Rolanda Cook, MAR
Terry-Lynn M. Doliner
Scott T. Edwards, MAR

Aimee Eileen Gonzales
Johana Gonzalez
Philip Curt Haas
Trisha Ann Kelly, MAR
Amy Le
Dafne E. Luz, MAR
Sharon Dinesen Martinez
Meghan Caroline Miller, MAR
Melody A. Molen, MAR
Gabriel Pena
Kellie Renee Penington, MAR
Elizabeth Perez, MAR

Paul Michael Perez, MAR
Taura Suzanne Pulos, MAR
Cristina Castelo Reed, MAR
Domingo Ruiz, MAR
Matt Joseph Seger
Cheryl Lea Tarter, MAR
Emmett Lee Tetz, Jr., MAR
Elizabeth F. Vrolijk, MAR
Kristine Lauren Walter, MAR
Mehdi B. Zadeh

BACHELOR OF SCIENCE

HUMANITEC REHABILITATION COLLEGE OFF-CAMPUS PROGRAM

HEALTH SCIENCE

*The recognition service was held for these students March 12, 2005,
at Humanitec Rehabilitation College in Japan.*

Miho Imao, cum laude	Asako Suzuki	Yuki Tsubai, cum laude
Chihiro Iwaki	Michiko Suzuki	Yuko Uehara, cum laude
Momoko Kawasaki	Genjou Takayama, cum laude	Motoo Watanabe, cum laude
Hitomi Kurata	Chie Tanaka	Yuko Yamada
Kodai Minami, cum laude	Mizuki Tokai	Shigeki Yano

DEPARTMENT OF CARDIOPULMONARY SCIENCES

EMERGENCY MEDICAL CARE

Johnny D. Caraballo	Jakub Jan Jagielinski	Allen Leroy Patee
Marco Eli Cuenca	Lisa Gale Kelley	Steven F. Richardson
Matthew Ryan Higgs, cum laude	Jeffrey Taylor Olson	Jonathan Peter Zygowiec

RESPIRATORY CARE—ENTRY-LEVEL

Matthew E. Cabreza

DEPARTMENT OF CLINICAL LABORATORY SCIENCE

CLINICAL LABORATORY SCIENCE

Kimberley R. Arnold	Jermene Vincent Ebanks, cum laude	Irene J. Pulido, cum laude
Saham Ghovin Bavi	Nai-Hua Stella Jeng	Sarah Jane Stewart
Linda Sue Carroll	Yohan Ryan Kim	Gloria Ann Thomas
Zandy W. Chinte	Tiffany Chih-Shan Lo, cum laude	

CYTOTECHNOLOGY

Mari S. Yang, cum laude

DEPARTMENT OF HEALTH INFORMATION MANAGEMENT

HEALTH INFORMATION ADMINISTRATION

Senan H. Abasso	Anthony Elias Esposito,	Carole A. Sanders
Pauline Joyce Andrada Calla	magna cum laude	Jared Alexander Jacob Vogt
Holly Diane Donnell	Wai Leung	Michelle N. Yankee, cum laude
Sherri L. Elsey	Beena Nair	

DEPARTMENT OF NUTRITION AND DIETETICS

NUTRITION AND DIETETICS

Mei-Kiu Chiu, cum laude	Briana Nicole Rasmussen	Serena Teddy, magna cum laude
-------------------------	-------------------------	-------------------------------

DEPARTMENT OF RADIATION TECHNOLOGY

RADIATION SCIENCES

Lennard Eric Abejar	Kelly M. Sanders	Holly A. Thompson, cum laude
Fredrick Dwane Lee II	Kelli A. Shelton	Melissa Ann West
Franklin Mamani		

RADIOLOGIST ASSISTANT

Rosy Del Carmen Cavender	Lucina Florance Mallavarapu,	Alejandro Ramirez
Christy Lee Foster	cum laude	Jillian Marie Schieker
Lela M. Jennings	Alejandro Nestor Manrique, cum laude	

DEPARTMENT OF SPEECH-LANGUAGE PATHOLOGY AND AUDIOLOGY

SPEECH-LANGUAGE PATHOLOGY AND AUDIOLOGY

Gabriel Antonio Garcia	Mindy Louise Owen	Lindsey R. Thompson, cum laude
Heidi Kay Green, cum laude	Elizabeth Petrissans	
Megan Ann Millar, cum laude	Rachelle Tonya Sams	

MASTER OF HEALTH INFORMATION SYSTEMS

DEPARTMENT OF HEALTH INFORMATION MANAGEMENT

HEALTH INFORMATION SYSTEMS

Janet Rae Henderson

B.S. Loma Linda University AH 1995

Ronald Ortiz

B.S. Southern Adventist University 2003

Claudia M. Rainda

B.S. Loma Linda University AH 1991

Dave R. Tadiarca

B.S. University of California, Riverside 2004

Roy A. Willis

B.S. Oakwood College 2004

MASTER OF OCCUPATIONAL THERAPY

DEPARTMENT OF OCCUPATIONAL THERAPY

ENTRY-LEVEL

Sherry Magdi Abdou

B.S. Loma Linda University 2005, cum laude

Desiree Fajayan Ayala

B.S. Loma Linda University 2005, cum laude

Amy Kristin Brownfield

B.S. Loma Linda University 2005

Alfredo Castro

B.S. Loma Linda University 2005

Linsey Chow

B.S. Loma Linda University 2005, cum laude

Nicholes B. Dunkley

B.S. Loma Linda University 2005

Lisa M. Earll

B.S. Loma Linda University 2005

Heather Dawn McCormick

B.S. Loma Linda University 2005

Heather Jean McCutcheon

B.S. Loma Linda University 2005, cum laude

Thuy Ngoc Phan

B.S. Loma Linda University 2005

Dina Lamarr Strong

B.S. Loma Linda University 2005

MASTER OF PHYSICIAN ASSISTANT

DEPARTMENT OF CARDIOPULMONARY SCIENCES

Stephanie Marie Callister

B.S. University of Nevada, Reno 2002

Lisa Mika Chan

B.S. University of California, Los Angeles 1997

Larina Hui-Ai Chu

B.S. Loma Linda University AH 2002

Sheri Lynn Cook

B.S. Grand Canyon University 2003

Pamela Denny-Griffith

B.S. Oakwood College 1979

Kim Lynn Hamilton

B.S. University of New Orleans 2001

Carrington Dae Von Horton

B.S. Southwestern Adventist University 1999

Hoshang Minoo Irani

BACHELOR'S EQUIV. University of Pune 1989

Sophea Ros Johansen

B.S. Loma Linda University AH 2003

Sarah Marie Mayer

B.A. University of California, Santa Barbara 1997

B.S. University of California, Santa Barbara 2000

Heta Dushyant Patel

B.S. California State Polytechnic University, Pomona
2002

Liana Lourdes Pena

B.S. University of Southern California 1998

Reginald Ritchie Peters

B.S. La Sierra University 1999

Debra Elaine Roth

B.A. University of Oregon 1985

M.P.T. Emory University 1987

Tricia Santos Sol

B.S.P.H. Loma Linda University PH 2002

Nora Louise Stephany

B.S. University of California, San Diego 1998

Joann Marie Timberlake

B.S. California State University, Dominguez Hills
2002

AWARDS

DEPARTMENT OF CARDIOPULMONARY SCIENCES

Respiratory Care, B.S.

Faculty Award: MATTHEW CABREZA.

Emergency Medical Care, B.S.

Faculty Award: JONATHAN ZYGOWIEC.

AMR Award: MATTHEW HIGGS, JAKUB JAGIELINSKI.

Alumni Scholarship Award: ALLEN PATEE.

Physician Assistant, M.P.A.

Faculty Award: SHERI COOK.

Spirit of LLU Physician Assistant Award: SARAH MAYER.

PA Alumni Award: LARINA CHU.

DEPARTMENT OF CLINICAL LABORATORY SCIENCE

Clinical Laboratory Science, B.S.

Chair's Award: TIFFANY LO.

DEPARTMENT OF HEALTH INFORMATION MANAGEMENT

Health Information Administration, B.S.

Margaret Jackson Scholarship: PAULINE CALLA, BEENA NAIR, CAROLE SANDERS,
JARED VOGT, MICHELLE YANKEE.

Sally Jo Davidian Scholarship: SHERRI ELSEY, MARIA ZAMORA.

Smart Corporation Scholarship: SANDRA ASSMAN.

Faculty Award: BEENA NAIR.

Health Information Administration Scholarship: SANDRA ASSMAN, JOANNA BERNARD,
STEPHANIE PEREZ.

Audrey Shaffer Award: PAULINE CALLA, JARED VOGT.

Student Award: BEENA NAIR.

DEPARTMENT OF NUTRITION AND DIETETICS

Nutrition and Dietetics, B.S./Professional Certificate

Ruth Little Nelson Scholarship Award: MEI-KIU CHIU, BRIANA RASMUSSEN.

Faculty Award: MARK HUNTSMAN, CANDACE MORGAN, LEIANNA FLEURY, CHRYSTYNA KULYK.

Alumni Award: SERENA TEDDY.

Kathleen Keen Zolber Scholarship Award: SERENA TEDDY.

Martha Miller Scholarship Award: LILI WAHYUNINGSIH.

DEPARTMENT OF OCCUPATIONAL THERAPY

Occupational Therapy Assistant, A.A., B.S./Professional Certificate

Faculty Award: YVONNE DEARDORFF.

Alumni Award: AUDREY LEE ADAMS.

Occupational Therapy, Entry-Level M.O.T.

Faculty Award: HEATHER JEAN MCCUTCHEON.

Alumni Award: AMY KRISTIN BROWNFIELD.

DEPARTMENT OF RADIATION TECHNOLOGY

Faculty Award: KATHRYN MCCLENAHAN COCKRILL.

DEPARTMENT OF SPEECH-LANGUAGE PATHOLOGY AND AUDIOLOGY

Speech-Language Pathology and Audiology, B.S./Professional Certificate

Outstanding Senior Award: HEIDI GREEN.

E. Evelyn Britt Promising Student Award: LINDSEY THOMPSON.

SCHOOL OF PUBLIC HEALTH

June twelve, six-thirty o'clock, Drayson Center



PRELUDE ALVA WAWOROENDENG, keyboard

Selected Compositions

ACADEMIC PROCESSION MARILYN M. HERRMANN, University Commencement Marshal, leading
CARLENE M. DRAKE, STEPHEN G. DUNBAR, NANCY E. KAWAHARA,
DAVID L. TAYLOR, Associate Marshals, assisting

The audience is requested to clear the aisles and remain seated.

Pomp and Circumstance March No. 1 . . . *Sir Edward Elgar*
(arr: Clare Grundman)

INVOCATION DAVID T. DYJACK
Associate Dean for Public Health Practice

WELCOME RICHARD H. HART, Chancellor of the University

GENTENNIAL LITANY B. LYN BEHRENS, President of the University

PRESENTATION JAMES L. KYLE, Dean of the School
OF AWARDS THE CHANCELLOR
THE PRESIDENT
LISA M. BEARDSLEY, Vice Chancellor for Academic Affairs

MUSICAL SELECTION

INTRODUCTION THE DEAN
OF SPEAKER

ADDRESS GWENDOLYN W. FOSTER
Health and Fitness Czar
City of Philadelphia

Member, Board of Trustees, Loma Linda University

WHAT YOU SEE IS WHAT YOU GET

CONFERRING OF DEGREES THE CHANCELLOR

GRADUATION PLEDGE THE CLASSES

AWARDING OF DIPLOMAS THE DEAN
AND SUSANNE MONTGOMERY, Associate Dean for Academic Affairs
CHARGE TO THE CLASSES

BENEDICTION MICHAEL L. CONNOR, Associate Dean for Student Services

ACADEMIC RECESSION Press On . . . *Selah*

The audience is requested to clear the aisles and remain seated during the recession.

The University provides a color photograph of the graduate, taken at the time of diploma presentation. To minimize distracting others during the ceremony, guests are requested to observe the following picture-taking courtesies: *Please do not* —

- use a flash or additional lighting;
- walk in the main aisles or in front of the platform;
- stand, except very briefly, in the audience line of vision.

CANDIDATES FOR DEGREES

The listing of a candidate's name in the commencement program is presumptive evidence of graduation but is not to be regarded as conclusive.

MASTER OF HEALTH ADMINISTRATION

Kristin Joy Bunker B.S. Loma Linda University AH 2003	Rita Martir Labuni B.S. California State University, San Bernardino 2001
Grace Eunhae Chang B.S. La Sierra University 2003	Kelly ManChi Leong B.S. California Polytechnic State University, San Luis Obispo 2002
Yasameen Faizy B.S. University of California, Los Angeles 2003	Edward Hylton Martin II B.S. Oakwood College 2000
Justin Robert Freed B.S. Southern Adventist University 2002	Janardhanan Veeran Paul Davy B.S. Andrews University 2003
Tiffany M. Garnett B.B.A. Oakwood College 2002	

MASTER OF PUBLIC HEALTH

Dianne G. Adams health education B.A. Humboldt State University 1991	Earl Alden Canson health education B.S. Oakwood College 2003
Qais Alemi global health B.S. San Diego State University 2003	Paola A. Case global health B.A. University of California, Berkeley 2003
Shaghaigh Sheree Arab health administration B.S. University of California, Riverside 2001	Merari R. Chacon public health nutrition B.S. Andrews University 2003
Navneet Singh Arora public health practice Rajiv Gandhi University of Health Science	Christopher David Chai biostatistics epidemiology B.S. University of California, Berkeley 2003
Perpemelo B. Balasta global health B.S. California State University, San Bernardino 2003	Elena Eun-Young Chai public health nutrition B.S. University of North Carolina at Charlotte 1997
Waheed K. Baqai health services research B.S. University of California, Santa Barbara 2003	Chang-Hung Chien biostatistics B.A. California State University, Long Beach 2002 M.A. California State University, Long Beach 2004
Josel Perez Bernardo maternal and child health B.S. University of California, Riverside 2001	Michael Henry Collins health administration B.S. California State University, Northridge 1993 M.S. California State University, Northridge 1997 D.O. Western University of Health Sciences 2001
Jesse Bliss global health B.A. La Sierra University 2003	Emmylia Perla Constantinescu epidemiology B.S. Walla Walla College 2001
Walleska Issel Bliss global health M.S.W. La Sierra University 2003	Marlon Gene Daniel biostatistics B.S. Andrews University 2000 M.H.A. Loma Linda University PH 2003
Loida Joy Renee Burrowes maternal and child health LIC. University of Montemorelos 1997	Martin Ekoumou global health M.D. University of Montemorelos 1991
Neusa Busch public health nutrition B.S. Pontificia Universidade Catolica de Campinas 1988	
Michelle M. Bush health education B.A. Point Loma Nazarene University 2003	

Vern Emery Erickson
health administration
B.A. Bemidji State University 2002

Norma Escobedo
health education
public health nutrition
B.S. California State University, San Bernardino 2002

Miguel Ángel Espinoza Avendano
public health nutrition
M.D. Centro de Estudios Universitarios de Xochicalco
2002

Amanda Jean Falconer
public health nutrition
B.A. Point Loma Nazarene University 2003

Daniel Feleke
epidemiology
M.D. Addis Ababa University 1986

Demera Jamie Finnegan
public health nutrition
B.A. Point Loma Nazarene University 2003

Dona J. Francis
global health
B.S. University of California, Davis 2004

Alketah Rochell Frazier
epidemiology
B.A. University of California, Irvine 2003

Colleen L. Geib
global health
B.S. Bowling Green State University, Main Campus
1995

Hannah Preetha George Thomas
public health practice
B.S. Tamil Nadu Dr. M.G.R. Medical University 2001

Vicki Janelle Gillham
generalist
B.S. Southern Adventist University 1995

Lisa Delia Griffith-Forde
public health nutrition
B.S. Andrews University 2003

Maya V. Gumatay
epidemiology
B.S. De La Salle University 2002

Socorro Elisabet Hernandez
public health nutrition
B.S. University of California, Davis 2003

Ana Celia Hernandez Martinez
health education
M.D. Centro de Estudios Universitarios de Xochicalco
2001

Christy J. Inskip
health education
environmental and occupational health
B.A. University of Missouri, Columbia 2002

Sherly Itty John, DEC
public health nutrition
B.S. University of California, Davis 2000

Barbara Joy
global health
B.A. California State University, Chico 1998

Puneet Kakkar
maternal and child health
M.B.B.S. University of Delhi 2003

Julianne Yuriko Kanzaki
public health nutrition
B.A. University of California, San Diego 2002

Priyadarshini Karipalli
environmental and occupational health
global health
B.S. Oregon State University 2002

Karen Doreen Kelly
public health nutrition
B.S. Columbia Union College 1996

Ahreum Kim
health administration
B.A. Wellesley College 2000

Niranjan Konduri
global health
M.S. University of New Mexico, Main Campus 2003

Ramon A. Leon
epidemiology
B.S. San Diego State University 2003

Dennis Joseph Linderman
global health
epidemiology
B.S. George Fox University 2002

Minzah Zuleikha Malik
health education/maternal and child health
B.S. University of California, Los Angeles 2002

Shana Laurie Matthews
epidemiology
B.S. Grambling State University 1995

Janice Diane Merkel
public health practice
B.A. California State University, San Bernardino 1999

Magdy Mankariaus Messiha
maternal and child health
M.M.S. Ain Shams University 1971

Robin Kristine Miller
global health
B.A. Winona State University 2004

Kim Marie Minors
health administration
B.B.A. Oakwood College 2003

Marie Christianne Nelson
maternal and child health
B.S. Loma Linda University SN 1993

Tri C. Nguyen
health administration
B.S. University of California, Irvine 2003

Cumara Barahona O'Carroll
epidemiology
B.A. University of California, Berkeley 1999

Judith Elizabeth Padilla
global health
B.S. University of California, Riverside 2003

Maisha Davette Parnell
health education
B.S. California State Polytechnic University, Pomona 1998

Parham Parto
health administration
B.S. University of California, Irvine 2003

Vaishali Mahesh Patel
biostatistics
B.S. San Jose State University 2002

Octavian Poenaru
health education
BACHELOR'S EQUIV. Romanian Adventist Theological Institute 1999

Christina J. Price
global health
B.A. Point Loma Nazarene University 2004

Mariana Diane Ritchie
health education
B.S. California State University, Long Beach 1991

Matthew Lawrence Robinson
biostatistics
B.S. California State University, Fullerton 2002

Medora Doris Rodríguez
epidemiology
B.S. Manipal Academy of Higher Education 1999

Yeira Rodríguez
health education/maternal and child health
B.A. Pitzer College 2001

Clyde L. Roggenkamp
public health nutrition
B.A. Andrews University 1963
M.A. Loma Linda University GS 1966
D.D.S. Loma Linda University SD 1970
M.S.D. Indiana University Bloomington 1983

Emelly B. Rossperencer
global health
B.A. La Sierra University 1999
M.A. Middlebury College 2002

Madeline Sanchez
public health nutrition
B.S. University of California, Riverside 2003

Steve Serrao
health administration
M.B.B.S. Manipal Academy of Higher Education 2002

Hillel Olivier Shand
health administration
B.A. La Sierra University 2002

Eric J. Shellman
global health
B.S. Brigham Young University 2002

Heather Terissa Shover
public health practice
B.S. University of California, Los Angeles 1992
M.D. University of California, Los Angeles 1996

Kimberly Lynne Siegel
epidemiology
B.A. University of Virginia 1997
M.D. University of New Mexico, Main Campus 2001

Snahal S. Solanky
epidemiology
B.S. Western Oregon University 2002

Gregory Lloyd Steinke
public health nutrition
B.S. Trinity Western University 2000

Jon Michael Takashima
public health nutrition
B.S. University of Houston, University Park 2001

Tyrone T. Teal
health administration
B.S. Loma Linda University AH 1986

Paula Louise Thompson
public health nutrition
B.S. Oakwood College 2001

Swanand Dattatraya Tilekar
epidemiology
M.S. University of Pune 2000
B.S. University of Pune 1996

Kong H. Truong
health administration
B.S. University of California, Irvine 2003

Natalie Thanda Tun
public health nutrition
B.S. University of California, Davis 2000

Padmanabhan Vanitha
epidemiology
M.B.B.S. Tamil Nadu Dr. M.G.R. Medical University 1995

Jereme W. Weischedel
environmental and occupational health
B.S. University of California, Riverside 2000

Beatrice Katumbi Wiafe
health education
B.S.P.H. Loma Linda University PH 2003

Emilie Louise Wilson
global health
B.A. Southern Adventist University 2001

Abel Rajesh Yarrozou
epidemiology
B.A. University of Kansas 1997
M.D. Loma Linda University, SM 2002

MASTER OF PUBLIC HEALTH— OFF CAMPUS/PERU

- | | |
|---------------------------------------------------------------------------------------------------------|-------------------------------------------------------------------------------------------------------------------|
| Sonia Cahuana
public health practice
BACH Universidad Peruana Union 2001 | Naida Anneliesse Melgar La Torre
public health practice
BACH Universidad Peruana Union 1994 |
| Eva Ximena Duran
public health practice
M.D. Universidad de Cuenca 1991 | Julio Mendigure Fernandez
maternal and child health
BACH Universidad Peruana Union 1995 |
| Roberto Mechel Escobar
public health practice
BACH Universidad Peruana Union 1996 | Oscar Nicolas Newball Robinson
public health practice
LIC. Corporacion Universitaria Adventista 1980 |
| Rosa Silvia Esquivel
maternal and child health
BACH Universidad Peruana Union 1998 | Mary Elena Nunez
maternal and child health
BACH Universidad Catolica de Santa Maria 1999 |
| Ross Mary Figueroa
maternal and child health
BACH Universidad Andina del Cusco 1999 | Cosset Pimentel Bonet
public health practice
BACH Universidad Peruana Union 1995 |
| Sandra Anita Flores
maternal and child health
BACH Universidad Peruana Union 2000 | Neda Pome
maternal and child health
BACH Universidad Peruana Union 2002 |
| Victor Guido Flores
maternal and child health
BACH Universidad Nacional Hermilio Valdizian 1988 | Rolando Francisco Quinteros
public health practice
BACH Universidad Peruana Union 2001 |
| Anderson Garcia
maternal and child health
BACH University of San Martin de Porres 2001 | Nancy Quispitupa
public health practice
BACH Universidad Techologica de Los Andes 1997 |
| Edwina Gutierrez
public health practice
BACH Universidad Peruana Union 1999 | Lina Raquel Ramirez
public health practice
BACH Universidad Peruana Union 1993 |
| Samuel Jose Huaman
public health practice
BACH Universidad Peruana Union 1996 | Noemi Ines Ramirez Pachari
public health practice
BACH Universidad Peruana Union 1993 |
| Guido Angelo Huapaya
public health practice
BACH Universidad Nacional Mayor de San Marcos
2002 | Nitzy Ramos
public health practice
BACH Universidad Peruana Union 2002 |
| Edilberto Mauricio Jaime Santos
public health practice
BACH Universidad Peruana Union 1999 | Guadalupe Reyna Velarde
public health practice
BACH Universidad Femenina del Sagrado Corazon 2003 |
| Lyda Rocio Jimenez Salcedo
maternal and child health
BACH Universidad Peruana Union 1998 | Nida Patricia Ricra
maternal and child health
BACH Universidad Peruana Union 1998 |
| Silvia Soledad Jove
public health practice
BACH Universidad Nacional del Altiplano 1996 | Guadalupe Olinda Rios De Los Rios
public health practice
BACH Universidad Nacional Mayor de San Marcos 1987 |
| Erika Lloclla Valdivia
public health practice
BACH Universidad Peruana Union 2000 | Kari Rosario Rios Gomez
public health practice
BACH Universidad Peruana Union 1998 |
| Angelica Teofila Lozada Guevara
public health practice
BACH Universidad Peruana Union 1999 | Eddy Margarita Salazar
public health practice
BACH Universidad Peruana Union 1994 |
| Livia Hermila Luna Diaz
public health practice
BACH Universidad Peruana Union 1996 | Juan Leonidas Samanez Rodrigo
public health practice
BACH Universidad Nacional Mayor de San Marcos 1974 |
| Maria Elena Malque
public health practice
BACH Universidad Peruana Union 1997 | Maritza Soncco
maternal and child health
BACH Universidad Nacional del Altiplano 1999 |
| Loida Elizabeth Mamani
public health practice
BACH Universidad Peruana Union 1993 | Mariso Carmen Soria
maternal and child health
BACH Universidad Peruana Union 2001 |

Yessenia Maribel Tantamango
 public health practice
 BACH Universidad Nacional Mayor de San Marcos 2003

Maribel Torres
 public health practice
 BACH Universidad Peruana Union 1992

Maria Esther Valencia
 maternal and child health
 BACH Universidad Peruana Union 1991

German Vega
 maternal and child health
 BACH Universidad Peruana Union 1999

Juan Edwing Velasquez
 public health practice
 BACH Seminario Adventista Latinoamericano de Teologia 1986

Alvaro Cesar Villar Quiroz
 public health practice
 Donetsk Institute of Medicine

MASTER OF SCIENCE IN PUBLIC HEALTH

Suzanne Marie Clark
 biostatistics
 B.S. University of California, Riverside 2000

Kai Ya Tsai
 biostatistics
 B.A. California State University, Fullerton 2003

Tsung Chen Tsai
 biostatistics
 B.S. National Chung Hsing University 2001

DOCTOR OF PUBLIC HEALTH

Patricia T. Alpert
 preventive care
 B.S. University of Hawaii, Manoa 1976
 M.S. University of Hawaii, Manoa 1980
 M.P.H. University of Hawaii, Manoa 1980
 Dissertation: The Role of Routine Blood Donation and Cardiovascular Risk in Premenopausal Women

Amy Louise Binggeli
 health education
 B.S. California State Polytechnic University, Pomona 1991
 M.P.H. Loma Linda University PH 1994
 Dissertation: How Risky Behaviors, Protective Factor, and Selected Theory of Planned-Behavior Constructs Influence Age of Sexual Debut among Middle and High School Students in the City of San Bernardino

Bonny Burns-Whitmore
 nutrition
 B.S. La Sierra University 1993
 M.P.H. Loma Linda University PH 1995
 Dissertation: Effects of Feeding Regular Eggs, Omega 3 Eggs, and Walnuts on Blood Lipids, Lutein, and Inflammatory Factors in Free-Living, Lacto-Ovo Vegetarians

Carolyn Ann Corder
 health education
 B.S. Pacific Union College 1971
 M.S. Loma Linda University GS 1974
 Dissertation: Eating Behavior and Obesity Risk of Youth Living in the City of San Bernardino, California

Noha Salim Daher
 epidemiology
 LIC. Lebanese University 1981
 M.S.P.H. Loma Linda University PH 1992
 Dissertation: Secular Trends in Life Expectancy by Diet Status among Nonsmoking Seventh-day Adventists

Patricia Adelle Dyett
 nutrition
 B.S. Andrews University 1995
 M.S. Andrews University 1999
 Dissertation: Developing a Valid Screening Tool for Assessing Nutritional Adequacy and Osteoporosis Risk among Vegans in the United States

Nancy Lynn Farrell
 preventive care
 B.A. California State University, San Bernardino 1995
 M.A. Loma Linda University GS 2001
 Dissertation: Middle School Students' Experiences with Discipline: A Contextual Look at Adult, School, and Neighborhood Connectedness

Janet Ellen Flores
 health education
 B.A. San Diego State University 1977
 M.P.H. San Diego State University 1983
 Dissertation: The Effects of Parents, Schools, and Medical Providers as Sources of HIV/STI-Prevention Information on Adolescent Sexual Risk Behaviors

- Maryanna Gabriel
preventive care
B.A. University of Victoria 1981
M.ED. Northern Arizona University 1981
M.P.H. Loma Linda University PH 1990
Dissertation: Attitudes of Preventive Care Specialists
and Registered Dietitians toward Their Obese
Patients
- Donna Louise Hebbeler
preventive care
B.S. College of Mount Saint Joseph 1969
M.P.H. Loma Linda University PH 1997
Dissertation: Comparing the Predictors of Intention to
Use Contraception, Given Alcohol Consumption,
among Women in SE Alaska
- Elvin Abueg Hernandez
health education
B.S. University of California, San Diego 1996
M.P.H. MCP Hahnemann University 2001
Dissertation: Social Welfare Systems and Their Effects
on Adolescent Violence, Injecting Drug Use, and
Negative Health Behaviors
- James Kyung-rae Jo
preventive care
B.S. Pacific Union College 1990
M.P.H. Loma Linda University PH 1998
Dissertation: Factors Related to Secondhand Smoke
Exposure among Children in Riverside County
- Patricia Lynn Jones
health education
B.A. University of California, Berkeley 1992
M.P.H. University of California, Los Angeles 1994
Dissertation: Factors Related to Delayed Time for HIV
Care among Youth Living with HIV: A Cross-
sectional Analysis of Social Networks and Access
to Care
- Peter-Phuoc Quang Le
preventive care
B.S. Loma Linda University AH 1997
M.P.H. Loma Linda University PH 2000
Dissertation: Does Screening for Diabetes Work the
Same between Hispanics and Vietnamese?
- Heather Nicholle Mercer
preventive care
B.A. Bowling Green State University, Main Campus
1993
M.A. Loma Linda University GS 1999
Dissertation: The Application of the Transtheoretical
Model of Change to Self-Care Behaviors in Type 2
Diabetics
- Olivia Lorraine Moses
preventive care
B.S. Atlantic Union College 1998
M.P.H. Loma Linda University PH 2001
Dissertation: The Relationship of Psychological Stress
to C-reactive Protein Levels in Overweight and
Obese Men
- James Otin Neergaard
global health and development
B.A. Pacific Union College 1969
M.P.H. Loma Linda University PH 1999
Dissertation: Comparison of Adult Male Shisha
(Water-Pipe) and Cigarette Smokers in Rural Egypt
- Joyce Beam Neergaard
health education
B.S. California State University, Los Angeles 1989
M.P.H. Loma Linda University PH 1998
Dissertation: Intimate Partner Violence: Does
Religion Make a Difference on Psychological
Indicators
- Jisoo Oh
epidemiology
B.S. La Sierra University 1995
M.P.H. Loma Linda University PH 1999
Dissertation: Differences in the Infant-Mortality Rates
across Counties in California--Real or Mostly
Artifact?
- Suwimol Sapwarabol
nutrition
B.S. Thammasat University TH 1996
M.S. Chulalongkorn University 1998
Dissertation: Effects of Long-term Walnuts
Consumption on Inflammatory Markers and
Tocopherols Levels
- Donna Gregory Thorpe
epidemiology
B.S. Loma Linda University AH 1969
M.P.H. Loma Linda University PH 1992
Dissertation: The Effects of Diet and Exercise on
Fragility Fractures over 25 years of Follow-up in
the Adventist Health Study
- Virginia Diane Woods
health education
B.S. University of Alabama in Huntsville 1974
M.S. Wright State University, Main Campus 1986
Dissertation: Primary Prevention Health Care among
Black American Men: Social Ecological Factors
Predictive of Prostate Cancer Early-Detection
Access

GRADUATION PLEDGE

We believe that wholeness of human beings encompasses and integrates the physical, spiritual, social, and mental dimensions.

We pledge to seek this wholeness in ourselves and those we serve.

We believe in the worth and potential of all individuals.

We pledge ourselves to respect the beliefs, ideas, opinions, and cultures of others.

We value our earth and all the resources it provides to us.

We pledge ourselves to care wisely for those resources and to work toward their fair and equitable distribution.

We acknowledge the responsibility of providing education in public health, continuing the legacy of Loma Linda University.

We pledge ourselves to use with integrity and compassion the knowledge and skills we have gained.

We understand that learning is a lifelong process.

We pledge to continue our quest for knowledge and understanding of our world and of ourselves.

We acknowledge that true wisdom comes not from people or books alone, but from a relationship with the Maker of us all.

We pledge ourselves to seek this wisdom and accept God's strength in doing so.

AWARDS

Loma Linda University Chancellor's Award: PAOLA CASE.

Dean's Award

Off-campus: YESSANIA TANTAMANGO.

Master's: EMELLY ROSSPENCER.

Doctoral: OLIVIA MOSES.

School Alumnus of the Year: CARLOS CRESPO.

School Distinguished Service Award: To be announced.

Hulda Crooks Scholarship Award: WAHEED BAQAI, SARAH BIONDOLILLO, V. DIANE WOODS.

Glen Blix Award for Excellence in Preventive Care: PATRICIA ALPERT, OLIVIA MOSES.

Faculty Research Award: To be announced.

Delta Omega Honor Society: To be announced.