



1-2008

## Dentalgram - Vol. 22, No. 01

Loma Linda University School of Dentistry

Follow this and additional works at: <https://scholarsrepository.llu.edu/dentalgram>



Part of the [Other Dentistry Commons](#)

---

### Recommended Citation

Loma Linda University School of Dentistry, "Dentalgram - Vol. 22, No. 01" (2008). *Dentalgram*.  
<https://scholarsrepository.llu.edu/dentalgram/192>

This Article is brought to you for free and open access by the Loma Linda University Publications at TheScholarsRepository@LLU: Digital Archive of Research, Scholarship & Creative Works. It has been accepted for inclusion in Dentalgram by an authorized administrator of TheScholarsRepository@LLU: Digital Archive of Research, Scholarship & Creative Works. For more information, please contact [scholarsrepository@llu.edu](mailto:scholarsrepository@llu.edu).

## Endodontic program 40th anniversary celebration

During the weekend of November 3–4, 2007, the advanced education program in endodontics celebrated 40 years of existence. The second oldest endodontics program in the Western United States, it was started by Dr. Ronald Buell in 1967. Since the program's inception, more than 100 endodontists have completed their specialty education here. The Alumni Weekend also served as the "kick-off" to complete the fundraising for the Buell Fund which is near a fund level that can qualify for the School's first named professorship: The Ronald E. Buell Endowed Professorship in Endodontics.



(Back row, from left) Drs. Mahmoud Torabinejad, Leif K. Bakland, and Steven Morrow (Front row, from left) Drs. Maurice Cutler, Rick Schmidt, and Dominic Niccoli



Dr. and Mrs. Charles Goodacre attended the event and Dr. Goodacre lead out in the fundraising for the Buell Endowment.



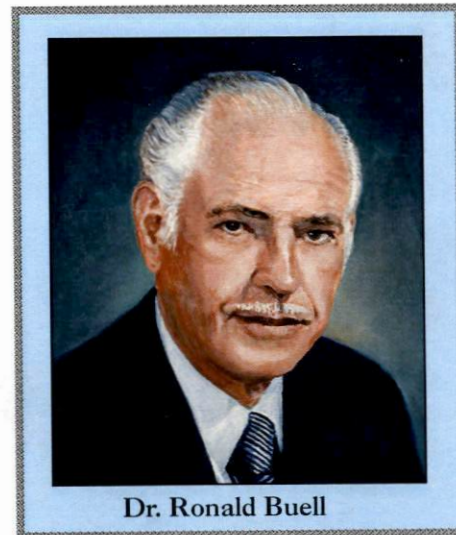
Current program director Dr. Mahmoud Torabinejad (left) welcomes Dr. Richard Schmidt, one of the early faculty members in the new endodontic program.



Enjoying the dinner are Drs. Gary Wuchenich, Debra Meadows, and Sean Noorvash.



Dr. and Mrs. Don Peters came from Boise, Idaho to help celebrate the program anniversary.



Dr. Ronald Buell

Dr. Ronald Buell founded the endodontics program in 1967.



Debbie Catino (left) enjoys visiting with former endodontic department staff members Marci Stirl, Debbie Medford, and Lydia Daly.



Here Dr. Steve Morrow gets ready to interview Dr. Merrill Schmidt, the longest serving faculty member in the department of endodontics.



Dr. and Mrs. John Munce and Dr. and Mrs. Rod Tataryn enjoy visiting.



The invited speaker for the program, Dr. Karl Keiser (left) from San Antonio, Texas, is welcomed by Dr. David Jaramillo



## LLUSD hosts first official outing for the pre-dental club at CSUSB

On Monday, November 26, Loma Linda University School of Dentistry hosted the first outing for the pre-dental club at California State University, San Bernardino (CSUSB). The pre-dental students were given a guided tour of the LLU campus, followed by a luncheon presentation by Marlise D. Perry, the assistant director of admissions and recruiting. The purpose of the pre-dental club's visit to LLUSD was for the students to have an opportunity to see the campus and learn about the mission of LLUSD. Also, they heard about the rigors of the DDS program on a first-hand basis from three dental students (Tristan Hamilton, Ryan Falke, and Brian Evans). At the end of the presentation, Marlise Perry made herself available for additional inquiries.

The pre-dental club at CSUSB was founded in the summer of 2007 by two pre-dental students (Jason Fowler and Chris Chu) at the request of Marlise Perry. The admissions office at LLUSD believed that a large pool of applicants existed at CSUSB and this was right. The pre-dental club at CSUSB recruited more than 40 students in its first quarter on campus this last fall. The pre-dental club is excited to be sponsored by LLUSD and looks forward to promoting LLUSD's mission at their home campus.

*Editor's note*—Cameron Turner, a student in the pre-dental club at CSUSB, contributed this story.



*Students from the pre-dental club at California State University, San Bernardino, pose with Marlise Perry, assistant director of admissions and recruiting. Pictured (back row l-r): Cameron Turner (PR coordinator), John Abdelmessiah, Chioma Nkwocha, Jonathan Cummings, Jason Fowler (president), April Buckins, Christian Lucena, Oulid Tellisi, Navraaj Kang, Joanna Reynoso, Nicole Varela, Jeremy Liu (treasurer). (Front row l-r): Amanda Douglas, Julie Martinez, James Ahn, Andrew Lewis, Marlise Perry, and Chris Chu (vice president).*

## Happy New Year, 2008!

To submit story ideas for future issues please call ext: 44984 or email nyuen@llu.edu  
We look forward to hearing from you!



## MARS & VENUS IN THE WORKPLACE



**"Maximize retention of valuable personnel  
and reduce costs of excessive job turnover"**

### John Gray, PhD, Author and Speaker



DATE: THURSDAY, FEBRUARY 7, 2008  
TIME: 1:00 P.M. - REGISTRATION  
LECTURE: 1:30 - 4:30 P.M.  
LOCATION: LOMA LINDA UNIVERSITY CHURCH  
FEE: \$40 PER PERSON  
REGISTER: (909) 558-4685  
By FEBRUARY 1, 2008

#### OUTLINE

- Improve productivity, teamwork and morale
- Maximize retention of valuable personnel and reduce costs of excessive job turnover
- Enhance team and office culture to maximize the value and advantage of diversity
- Enhance customer service
- Reduce vulnerability to harassment complaints and lawsuits
- Develop effective strategies to prevent and resolve gender-based conflict

#### SYNOPSIS

An expert in the field of communication, Dr. John Gray's focus is to help men and women understand, respect, and appreciate their differences in both personal and professional relationships. This presentation will enhance overall productivity, reduce gender conflict, improve morale, and increase awareness. It will expand the ability of the participants to lead and motivate others by recognizing that there are differences in how men and women lead and react to leadership styles.

DENTAL ALUMNI ASSOCIATION LOMA LINDA UNIVERSITY



Define the perfect mission trip, and this is what we had. Our dental mission trip to Bangladesh was an experience that I will remember for the rest of my life. On the trip, we traveled 40+ hours and worked for five days. It was an exhausting ordeal, but created memories that will last forever.

We started our trip with 18 hours of plane rides. The first plane we boarded was hit by a service vehicle and we had to change planes, which delayed our flight several hours. Fortunately we were able to catch our connection flight in Hong Kong and found ourselves in Dhaka by midnight. We exited the air-conditioned airport to enter the hot, humid, weather we would live in for the next seven days. Our clothes would never feel dry until we got back to the U.S.

We continued to our first home base, which was a local Adventist clinic. We quickly unloaded our equipment and found the tile floor very inviting considering the time of night. The next day we took a six-hour bus ride to Jalchatra. On our way there our bus almost fell off the road.

There were roads wide enough for two large vehicles yet it was common to have four or five vehicles across the roads flying in opposite directions at any given time. Upon arrival at our final destination, we found our head lamps to be of great use. Again we arrived after nightfall and we carried our equipment on rickshaws to our camp. This time we had concrete floors that rested our tired bodies warmly as we crashed for the night.

The next day we began our medical and dental work. Although there was little advertisement for our services, by day two, word had spread. People came from all over, some from four hours away, just to see a doctor for two minutes.

We worked all day from 8:00 in the morning sometimes until 6:00 in the evening. This went on for four days. Day five we reserved a half-day where we would treat all of our volunteers to complimentary dental and medical attention. When all was said and done, we had seen approximately 1,500 people and had performed about 2,000 procedures. It was amazing how quickly our team of 21 learned to work together with the volunteers at the camp.

We started our journey back to the United States Saturday afternoon. It was definitely an emotional event. On one hand we were excited to be going back to family and friends; on the other hand, we had met a large group of people with a need. They had very little in terms of worldly things, but seemed to have so much more.

I know that if a group were to go back to this area, there would be plenty of opportunity to share the gospel. We felt we had made an impact in this area and touched the hearts of the people there.

When I reflect on this trip, I realize how fortunate I am to have as much as I do. And I know I have taken for granted many of the comforts and opportunities I have just being here in the U.S. Being in dental school I have a responsibility to the world and to God. I need to utilize my education to spread the gospel to those in need.

Physical healing is a huge door for spiritual sharing. I need to serve those people who have not yet met Christ and introduce them to the joy that comes from serving God.

Will I go on another mission trip to a third world country? Absolutely. I just hope others will join the journey.



**January 27, 2008**

**Come and give back to the community!**

**Mark your calendars!**

## *Clinic With a Heart*

**Clinic With a Heart will be held on  
Sunday, January 27, 2008**

We need volunteers to help with patient registration, dental assisting, clinic supply, runners, sterilization and much more.

Name \_\_\_\_\_

Ext. \_\_\_\_\_

What I can do to help: \_\_\_\_\_

**To become a volunteer please return this form to  
Mary Hartwell's office**



**Winter work bee was a great success**

At the break of dawn on Sunday, December 16, 98 employees volunteered for the biannual work bee. Areas that were cleaned were as follows: main clinic, east clinic, south clinic, grad perio, omfs, ortho, special care dentistry, main lobby and entrance, hallways (first & second floors), lounge, rooms 1101-02/1176-77, all lab deck surfaces. During down time, a crew from clinic supply cleaned the following: all cabinets on first floor, all windows in the School, vacuumed ceilings; cleaned vents, stairways (first through fifth floors), and the dean's conference room.



*In the main clinic, Carl Panaguiton and Odie Fontoura (above) were among the volunteers who participated in the work bee.*



*Leo (left) and Andrew Galvan clean the D3 lab.*

**2007 Christmas Breakfast memories—the deans serve breakfast**



*(From left) Dr. William Naylor, associate dean, Kathleen Moore, assistant dean, Drs. Fred Kasischke, associate dean, and Charles Goodacre, dean, Frosty the Snowman, Ron Secor, associate dean, Drs. Ronald Dailey, associate dean, and William Hooker, associate dean. Not pictured: Paul Richardson, associate dean*

*Be always at war with your vices, at peace with your neighbors, and let each new year find you a better man.*

*—Benjamin Franklin*

**Sexual harassment training**  
*Attendance is mandatory*  
Rooms 1101/1102

Tuesday, January 8, 2008\*  
Friday, January 11, 2008\*\*  
Tuesday, January 15, 2008\*  
Friday, January 18, 2008\*\*  
Friday, January 25, 2008\*\*

\*\*2:00–4:00 PM; \*5:00–7:00 PM

**Dentalgram**

*Editor:* Nancy L. Yuen, nyuen@llu.edu  
*Photographers:* Ryan Becker, Carmen Fernandez  
*Production assistant:* Melissa McDaniel

*Contributors:* Leif K. Bakland, Cynthia Briceno, William Heisler, Heidi Cooley, Nancy Davidson, Robin Fierro, Arlene Lee, Melissa McDaniel, Kathleen Moore, Jeni Osborne, Sam Sadanala, Jodi Staff, Cameron Turner, Carole White, Jasper Yai

**Women's Auxiliary Luncheon:** Spouses of alumni and dental faculty, plan now to attend the Women's Auxiliary Luncheon to be held during the 48th Alumni Student Convention. The theme of the luncheon will be dental missions.

The event will be held Thursday, February 7, 2008, from 11:30 a.m. to 2:00 p.m. at the Marriott Hotel, 3400 Market Street, Riverside. The cost is \$45.00 per person.

Please RSVP to Arlene Lee, (909) 825-5384; indicate number and names of those who wish to attend and send a check payable to "LLU School of Dentistry Women's Auxiliary." Mail your check to: Arlene Lee, 2097 E. Washington Street, Suite 1E, Box 237 Colton, CA 92324 by February 1, 2008. Tickets may be available at the door.

**Directions:** From Loma Linda—travel west on Barton Road (becomes Washington Street) to the I-215 South toward Riverside. Continue on CA-91W. Take Mission Inn Ave exit toward downtown. Turn Right at Mission Inn Avenue. Turn right at Market Street. Go two blocks (you will pass the Mission Inn) to Market Street. The Marriott Hotel will be on the right.